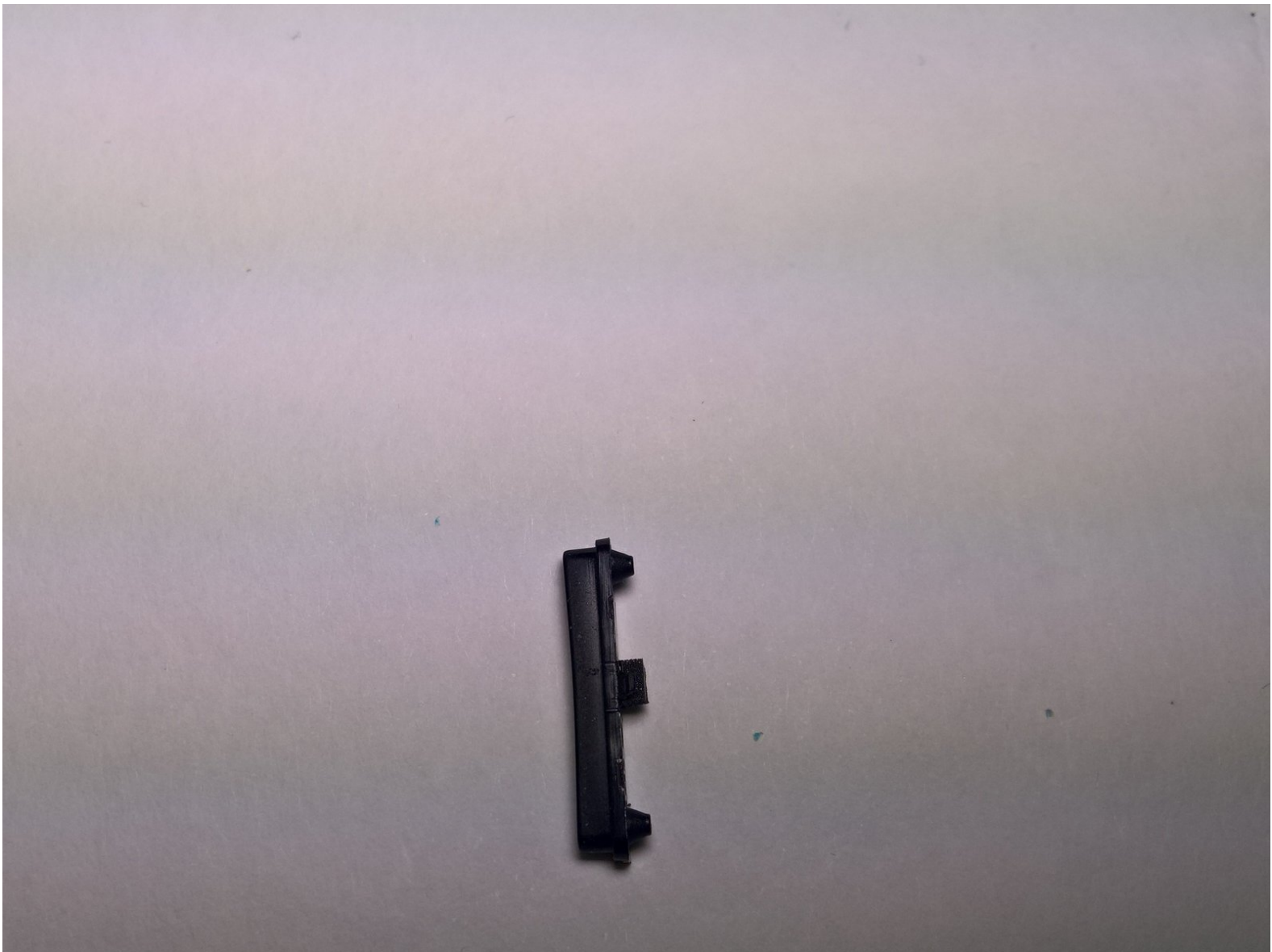




# Samsung Galaxy Tab 7.0 Sprint Volume Button Replacement

This guide will teach the reader how to replace the volume buttons on a Samsung Galaxy Tab 7.0 Sprint.

Written By: Peter Van Ausdeln



## INTRODUCTION

This guide will teach the reader how to replace the volume buttons on a Samsung Galaxy Tab 7.0 Sprint. This will require removing multiple parts before accessing the buttons.



### TOOLS:

- [iFixit Opening Tools](#) (4)
- [Tri-point Y0 Screwdriver](#) (1)
- [Phillips #00 Screwdriver](#) (1)
- [Metal Spudger](#) (1)



### PARTS:

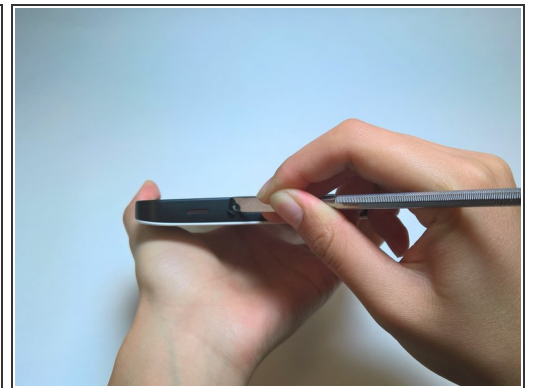
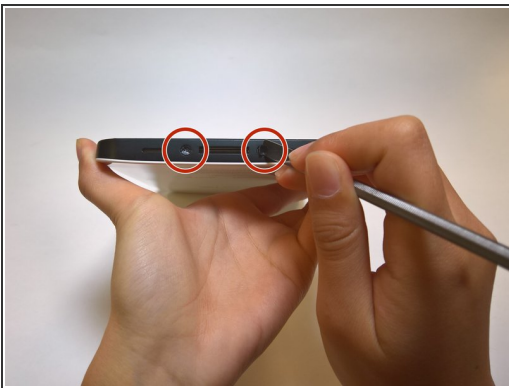
- [Samsung Galaxy Tab Volume Buttons](#) (1)

## Step 1 — Front Panel



- Fully power off the device.
- Disconnect and remove any cables that are connected to the device (i.e. chargers or headphones).
- Place the device on a flat, stable, and clean surface.

## Step 2



- Remove the plastic tabs on the bottom of the device using the metal spudger, as shown in the pictures.
- ☑ Make sure you have a place to store small parts like this where they are easily accessible but hard to lose.

## Step 3




- Using a Tri-Point YO Screwdriver, remove the two 4.1mm Tri-Wing screws.
- ☑ Place the removed screws in a location similar to where you placed the pads that you removed in the previous step.

## Step 4

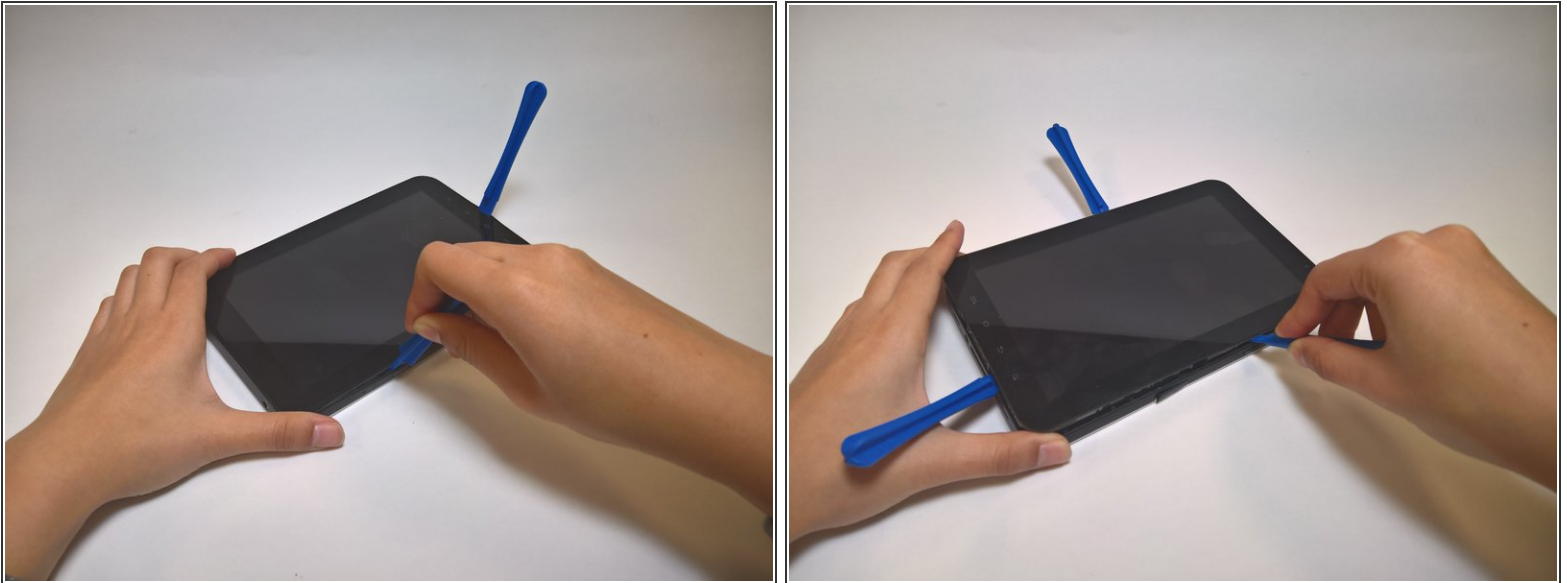


- Wedge a plastic opening tool between the front and back panel, on the bottom right corner.
- Slowly push the tool down to make a small gap between the front panel and the back panel.
- Holding the tool steady, run the tool along the bottom part of the device from right to left. This will make the gap between the front panel and the back panel bigger.

 When wedging your tool into the device, make sure to apply the pressure to the screen and device at a slow but steady speed to the screen. Too much pressure too fast can crack the screen.

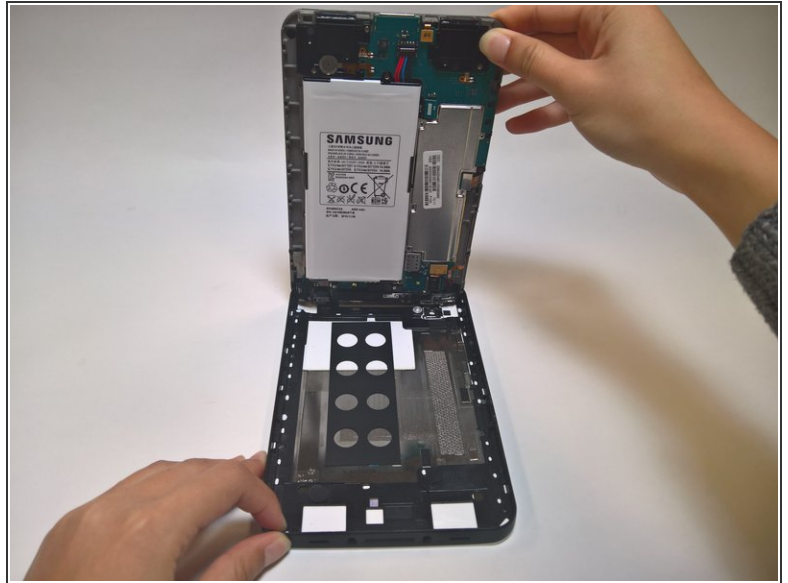


## Step 5




- Leave the previously used tool wedged in the device.
  - Insert another plastic opening tool into the bottom of the left side, as shown.
  - Using a similar procedure to the last step, run the tool along the side and widen the front panel-back panel gap. This time, run the device from bottom to top.
  - Repeat this process for the right side of the device, starting at the bottom of the right side.
- i** Some of the other tools that you wedged in may pop out. Simply wedge them back in where they were previously, and continue.

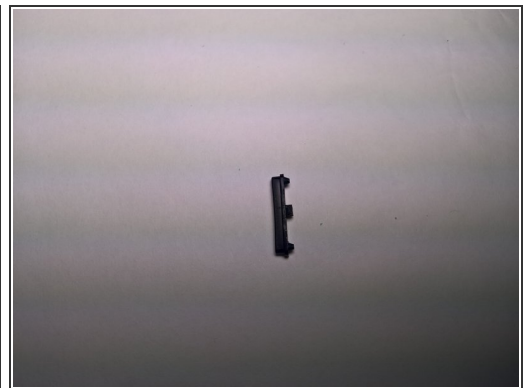
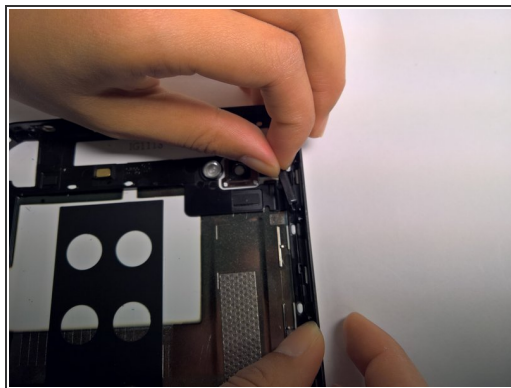
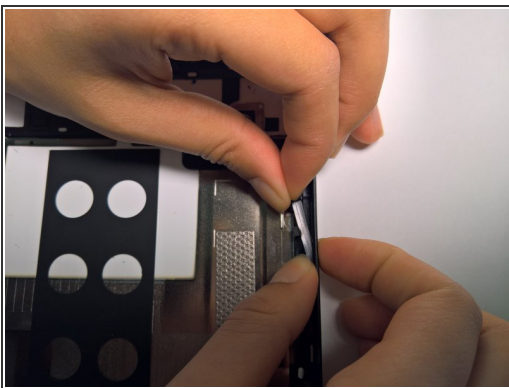
## Step 6




- Holding the bottom of the device, lift the front panel from the back panel.

 Make sure to remove the front panel slowly, to ensure that you don't accidentally break anything.

## Step 7 — Volume Button



- From the outside edge of the device, carefully push the volume button inwards towards the middle of the device.

 Make sure to not push too hard. If you push too hard, the button might slip and hit the parts on the inside close to the button.

- Once the button is out of its slot, carefully remove it from the device.

To reassemble your device, follow these instructions in reverse order. Make sure all parts are aligned properly before attempting to put them back together.