



# Samsung Galaxy Tab 7.0 Volume Buttons Replacement

Replace the volume buttons on your Samsung Galaxy Tab.

Written By: Walter Galan



---

## INTRODUCTION

Use this guide to replace the volume buttons.



### TOOLS:

- [iFixit Opening Picks set of 6](#) (1)
  - [Metal Spudger Set](#) (1)
  - [Phillips #00 Screwdriver](#) (1)
  - [iFixit Opening Tools](#) (1)
  - [Y1 Tri-point Screwdriver](#) (1)
-

## Step 1 — Front Panel



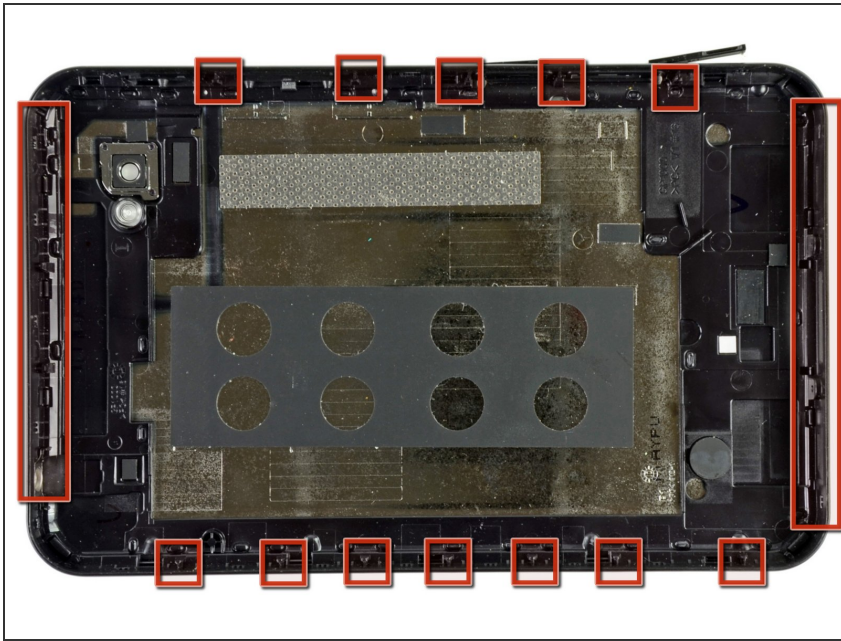
- Use the flat end of a metal spudger to pry the two plastic tabs near the dock connector off the rear case.


## Step 2



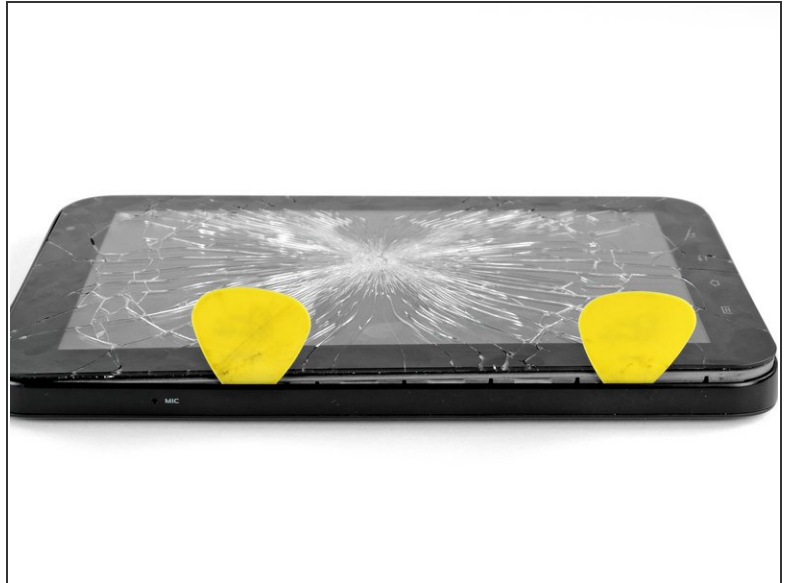
- Remove the two 4.1 mm Tri-Wing screws near the adjacent edges of the dock connector.


## Step 3



 The following steps will require you to disengage several clips (highlighted in red) around the perimeter of the rear case. The clips are delicate and fragile; proceed with caution.

## Step 4



-  Disclaimer: The Galaxy Tab we acquired already had a shattered front glass panel. However, the procedure outlined in this guide is identical for both intact/shattered front panels.
- Insert a plastic opening tool near the bottom left edge of the rear case.
  - Use your plastic opening tool to gently create a small gap between the front panel and the rear panel near the bottom left edge.
  - Run the plastic opening tool along the left side of the perimeter to create a bigger gap between the front panel and the rear panel.
  - Insert two guitar picks into the small gap created by the plastic opening tool.

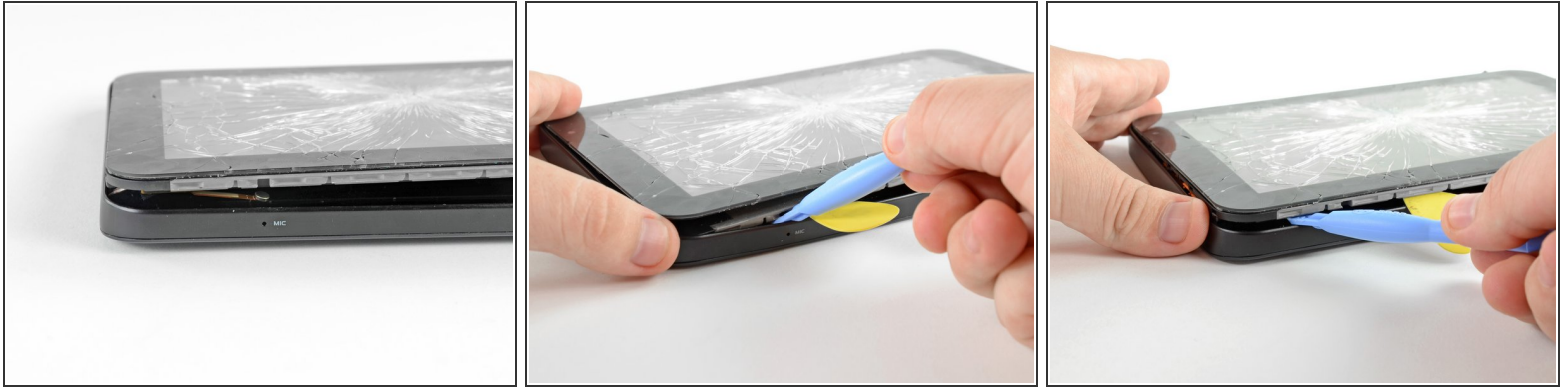


## Step 5



- Insert the plastic opening tool into the dock connector and wedge it underneath the front panel/motherboard assembly.
- Thrust the plastic opening tool downwards to create a gap near the lower left corner of the front panel assembly.
- Insert a guitar pick into the newly created gap near the lower left edge of the Galaxy Tab.

## Step 6



✦ Be careful when approaching the top left corner of the Galaxy Tab. Be sure to follow the next step carefully.


⚠ When separating the front panel from the top left corner of the Galaxy Tab, be careful not to rip the microphone ribbon cable (highlighted in red in the first picture). It is extremely thin and easy to tear.

- Insert a plastic opening tool into the gap next to the left side of the guitar pick.
- ⓘ Make sure to wedge it underneath the inner framework to gain the most leverage when releasing the clips.
- Simultaneously lift upwards and run the plastic opening tool along the top left corner of the Galaxy Tab to free the Front Panel Assembly from the retaining clips.

## Step 7



- Slightly lift the left side of the front panel assembly to separate it from its housing within the rear panel.

 Do not completely lift the front panel assembly, as it is still restrained to the rear panel by clips around the top, bottom, and right sides. Doing so may cause severe damage.

## Step 8



- Wedge the flat edge of an opening tool between the front panel and rear panel near the dock connector.
- Use a plastic opening tool to pry the bottom right corner out of its housing in the rear panel.



## Step 9



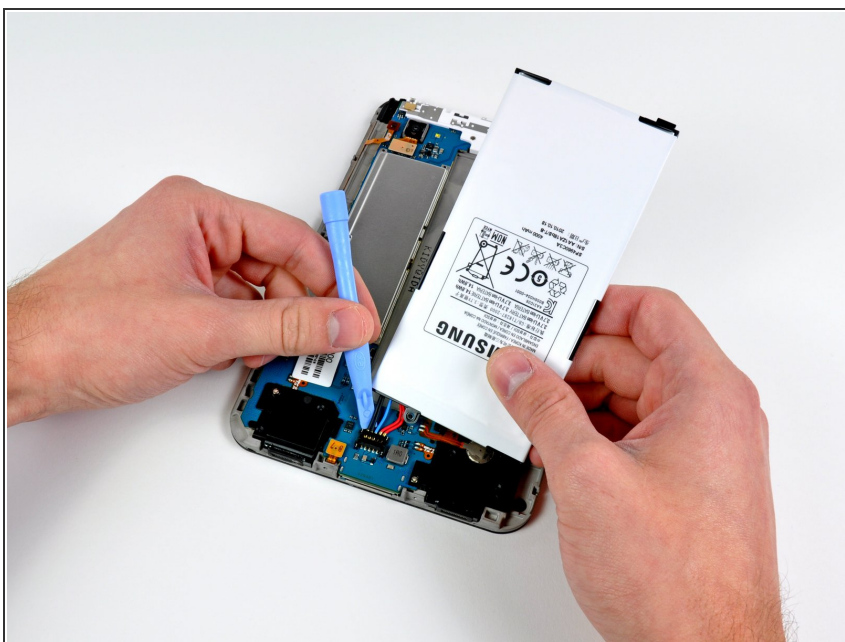
- Lift and remove the front panel assembly from the rear panel.

## Step 10 — Battery



- Remove the single Phillips screw securing the battery to the motherboard.

## Step 11



- Use the edge of a plastic opening tool to pry the battery connector straight up off its socket on the motherboard.

## Step 12 — Rear Camera



- Use the edge of a plastic opening tool to pry the rear camera connector up from its socket on the motherboard.

## Step 13



- Lift and remove the rear camera from the Galaxy Tab.

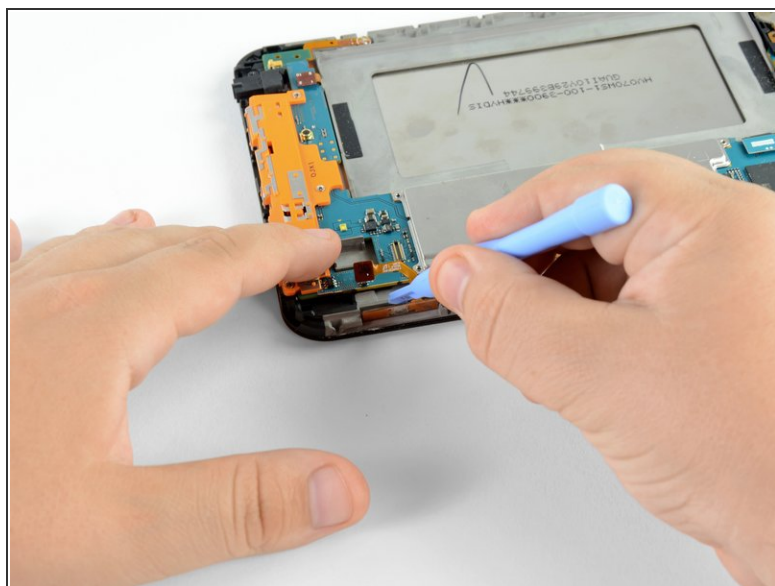
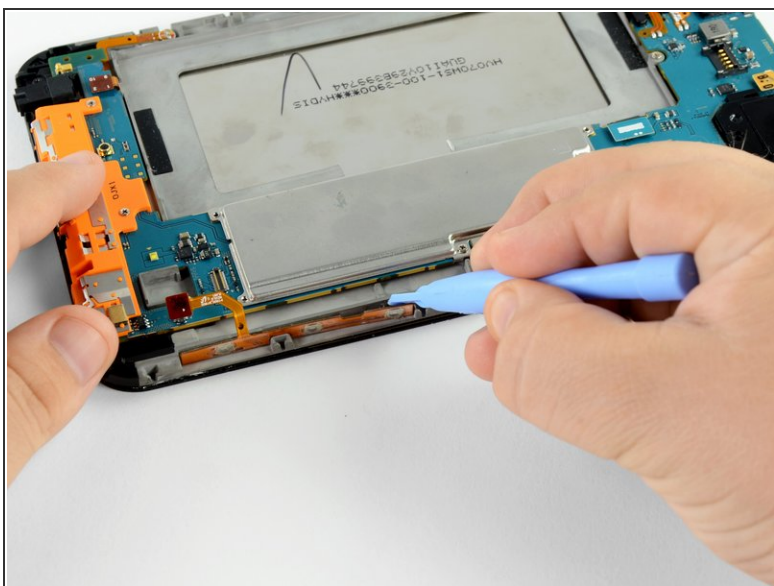
## Step 14 — Volume Buttons



- Use the edge of a plastic opening tool to pry the volume buttons connector straight up from its socket on the motherboard.

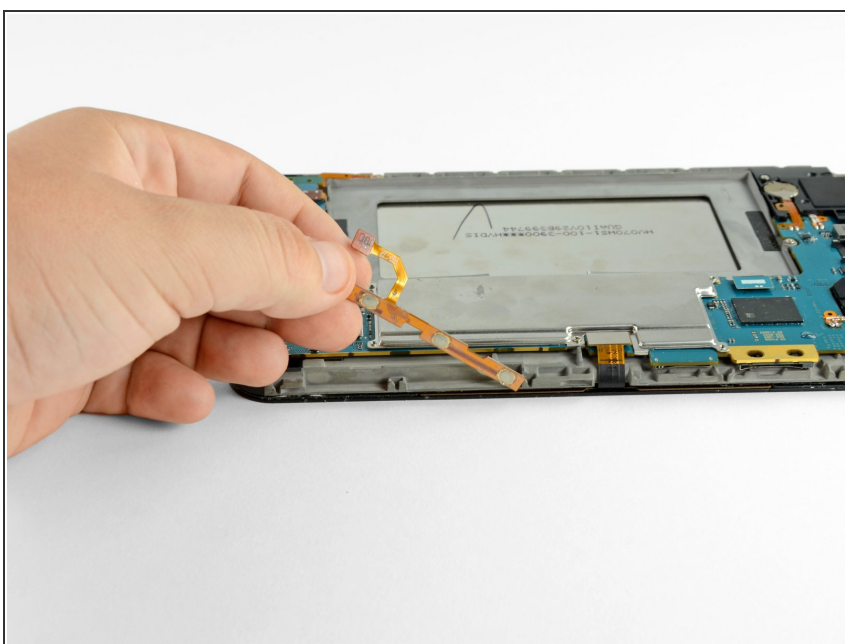


## Step 15



- Insert the edge of a plastic opening tool in between the inner framework and the volume button recess.
- Carefully run the plastic opening tool to the left to dislodge the volume buttons assembly from the inner framework.

## Step 16



- Remove the volume buttons assembly away from the Galaxy Tab.

To reassemble your device, follow these instructions in reverse order.