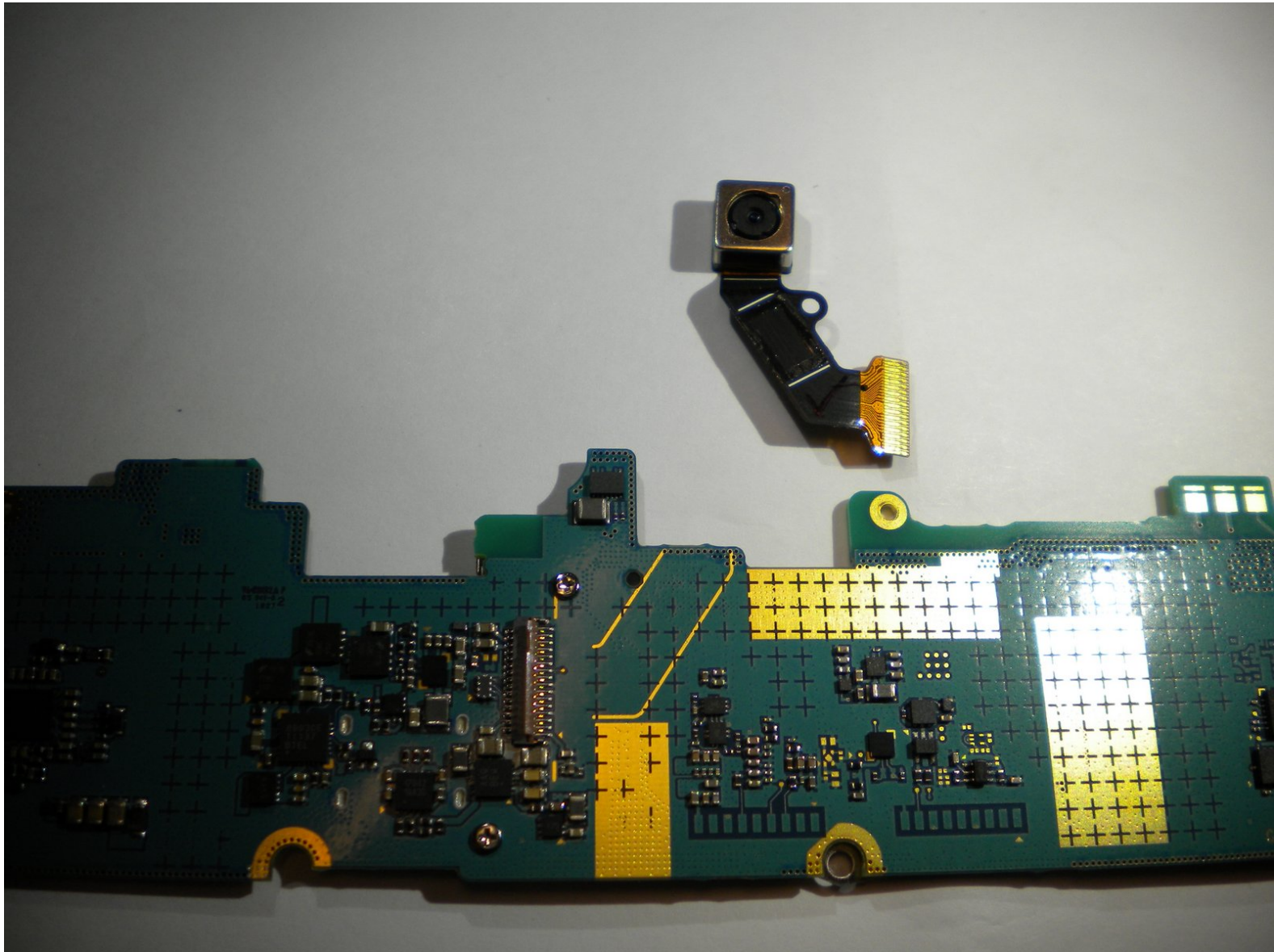




Samsung Galaxy Tab 8.9 Rear Facing Camera Replacement

Directions on how to remove the rear facing camera from device.

Written By: Aleezee True

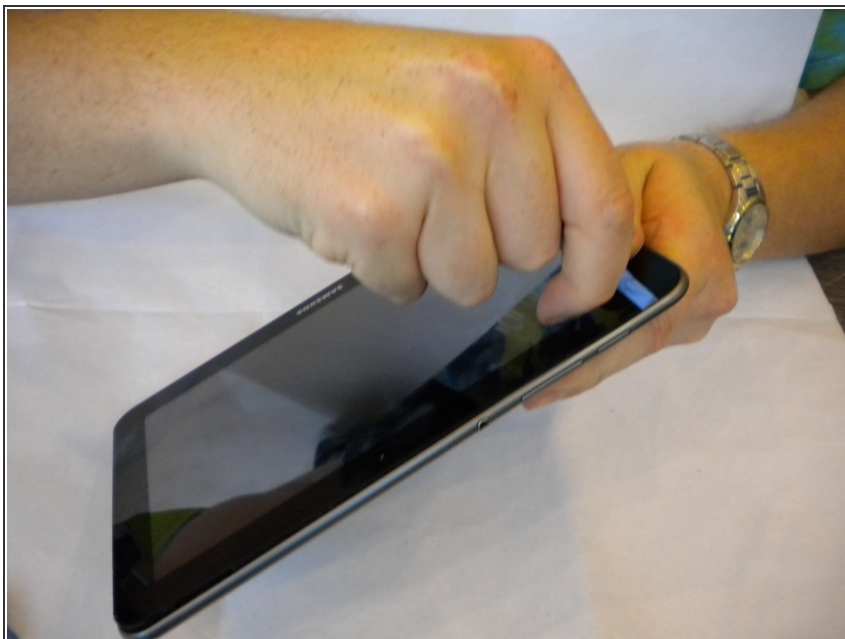




TOOLS:

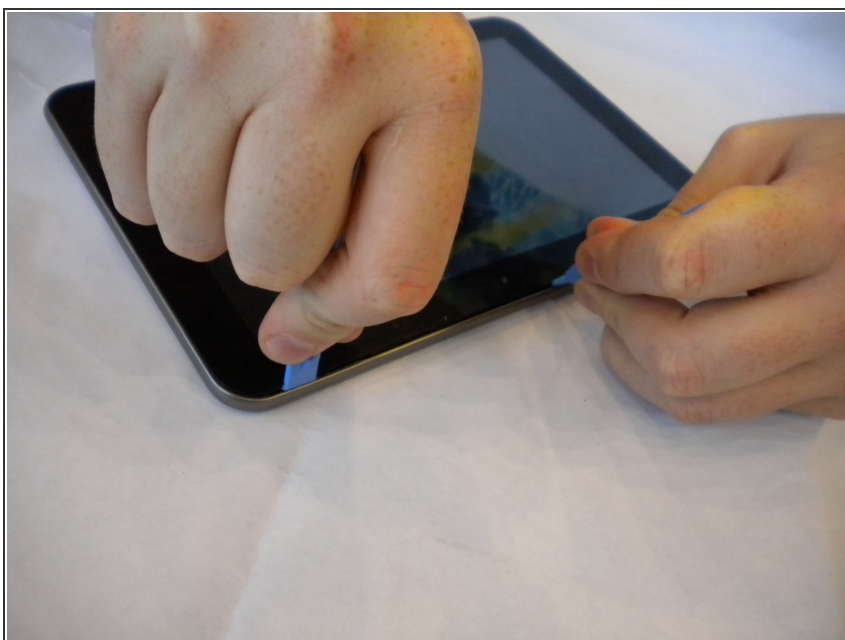
- [iFixit Opening Tools](#) (1)
 - [Phillips #00 Screwdriver](#) (1)
 - [Spudger](#) (1)
 - [Tweezers](#) (1)
-

Step 1 — Insert Opening tool



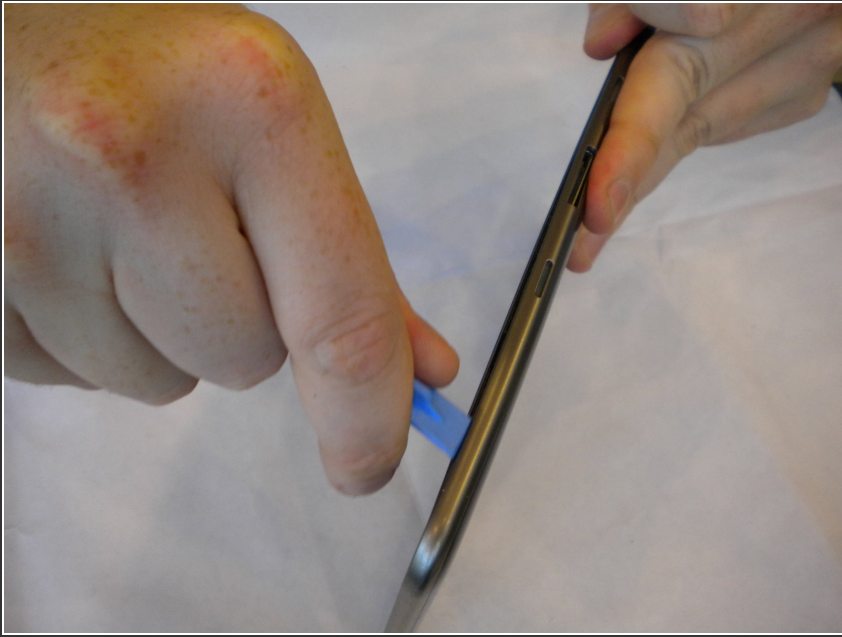
- Insert a plastic opening tool between the back cover and screen of the Samsung Galaxy Tab 8.9 (as indicated in the photograph).

Step 2 — Insert second tool



- Insert a second plastic opening tool 6 cm (~2.4 inches) away from the first tool.

Step 3



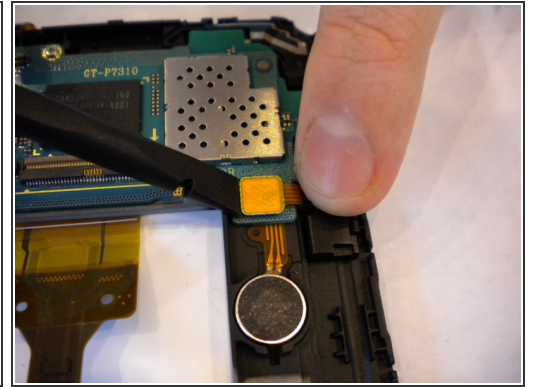
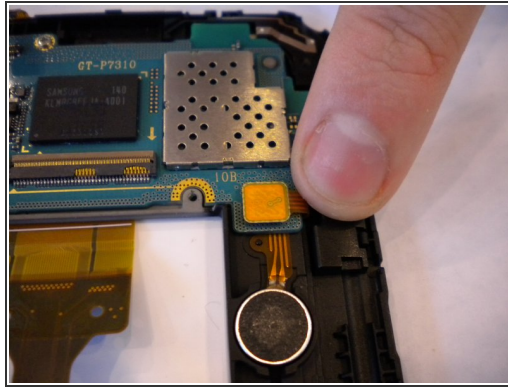
- Slide the second plastic opening tool along the edge of the device to separate the back cover.

Step 4



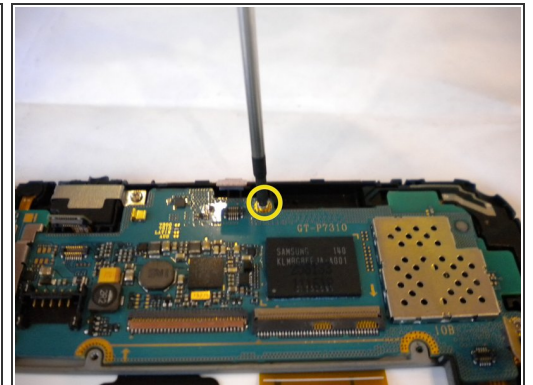
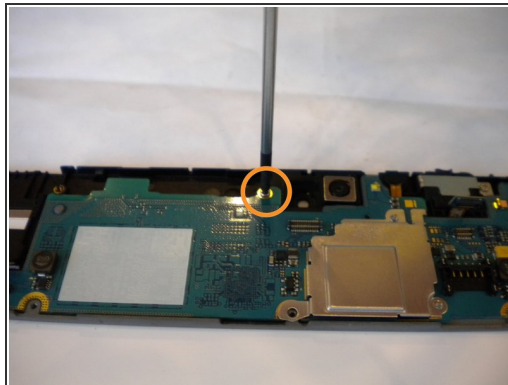
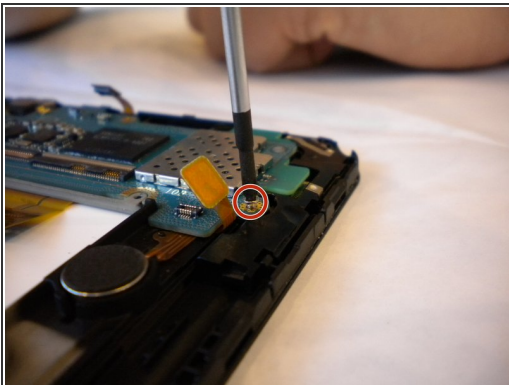
- Using your hands, remove the back cover.

Step 5 — Motherboard



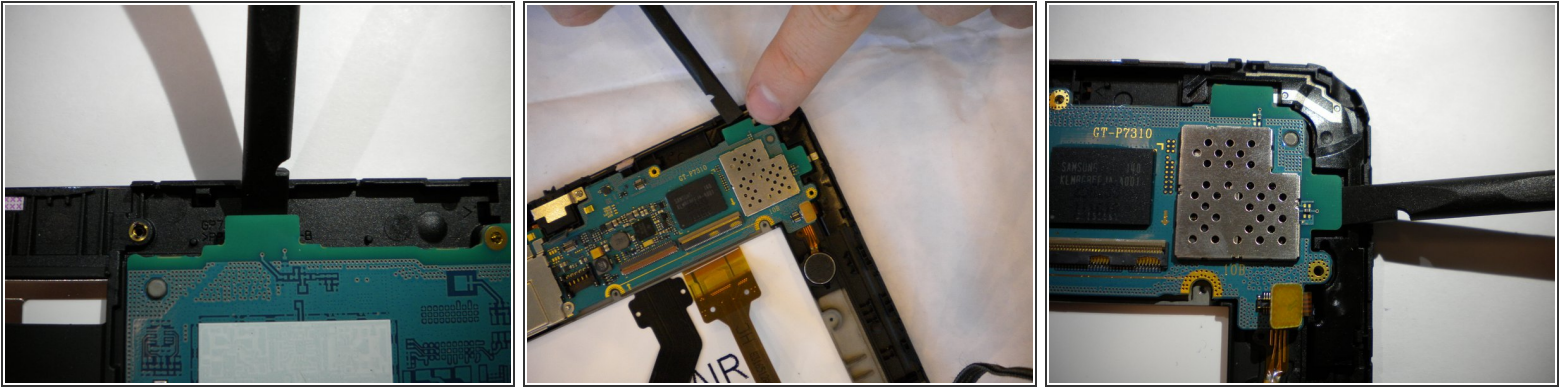
- Locate the motherboard and 5 connectors on it.
- Pry up and detach the connector from the motherboard using the flat edge of the spudger.
- Repeat for the 4 remaining connectors.

Step 6



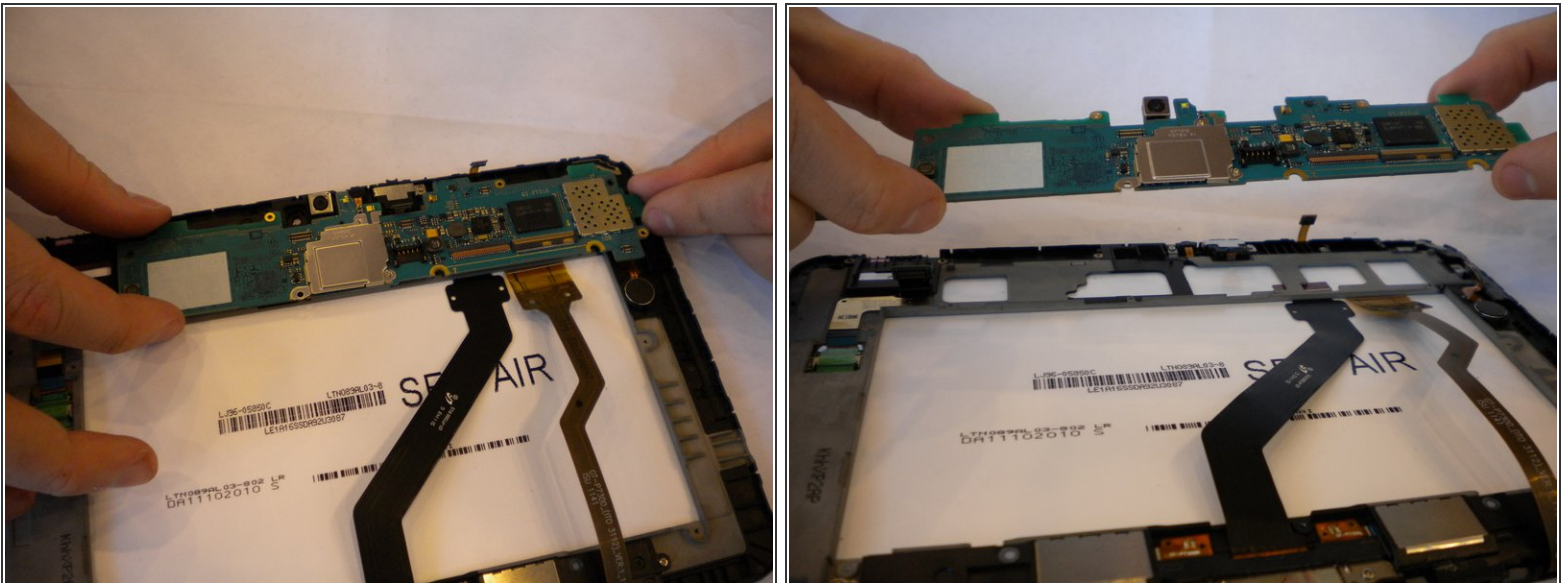
- Using the Phillips #00 screwdriver, unscrew the 3 screws (1mm) that are located near:
 - Camera
 - Power and volume buttons
 - Tilt sensor

Step 7



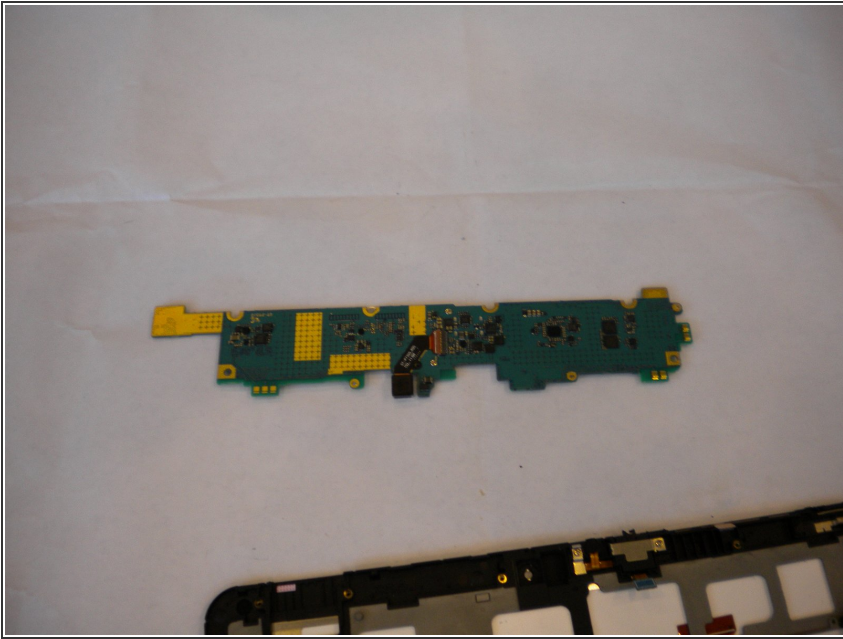
- Using the flat edge of the spudger, pry and lift up the motherboard.

Step 8



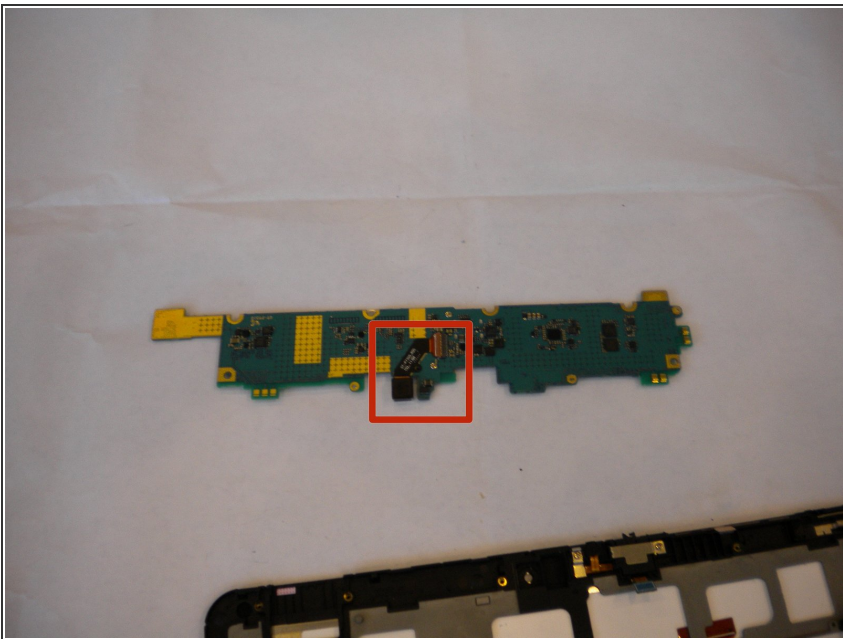
- Pull away the motherboard from the housing.

Step 9 — Flip Motherboard



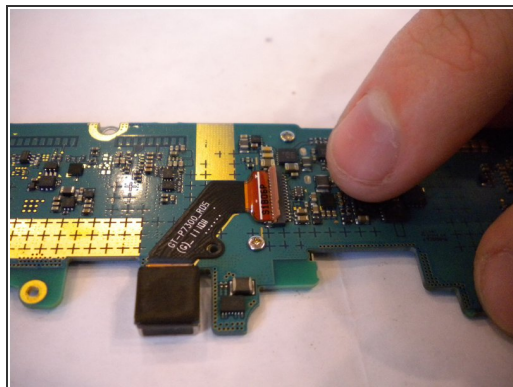
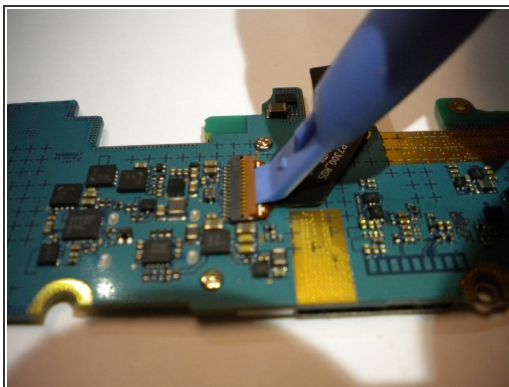
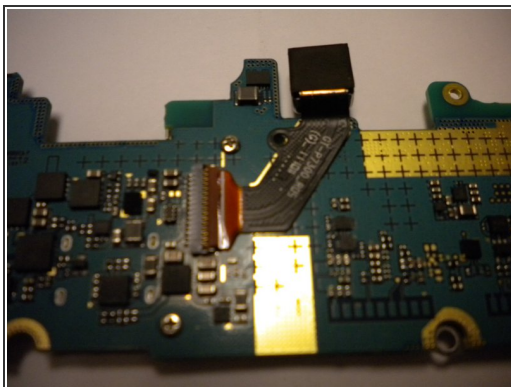
- After removing motherboard from device, flip motherboard over.

Step 10 — Locate Camera



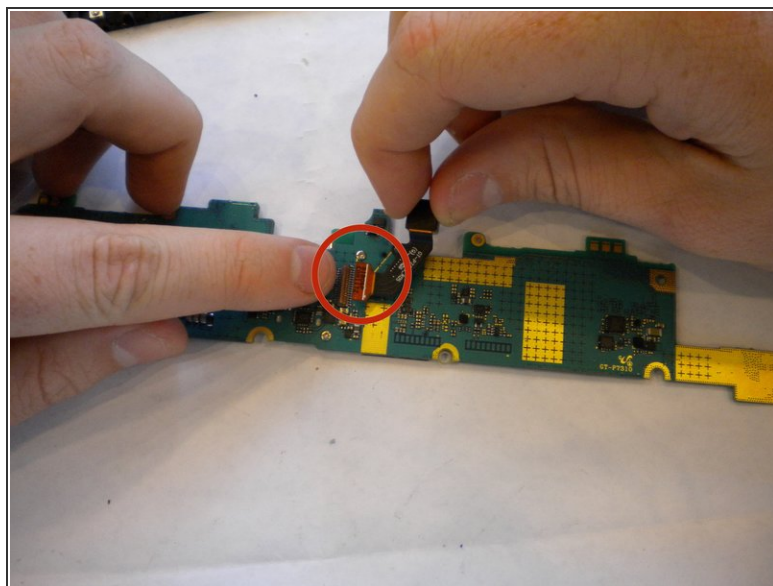
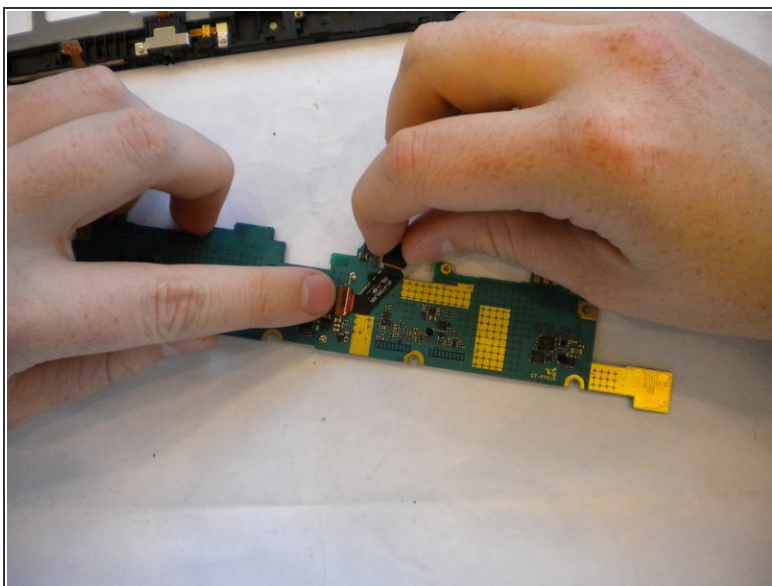
- Camera is located in the center of motherboard.

Step 11 — Disconnect Flex Ribbon



- Using flat side of Spudger, lift orange tab connecting the flex ribbon of the camera to the motherboard.

Step 12 — Remove Camera



- Remove the camera from the motherboard.

To reassemble your device, follow these instructions in reverse order.