



# Samsung Galaxy Tab A 10.1 Back Panel Replacement

This guide will show you how to remove the back panel of the Samsung Galaxy Tab A 10.1.

Written By: Isabella Li



## INTRODUCTION

To replace other parts inside your Samsung Galaxy Tab A 10.1, you must first open up the device through the back. This guide will show you how to remove the back panel of the device.



### TOOLS:

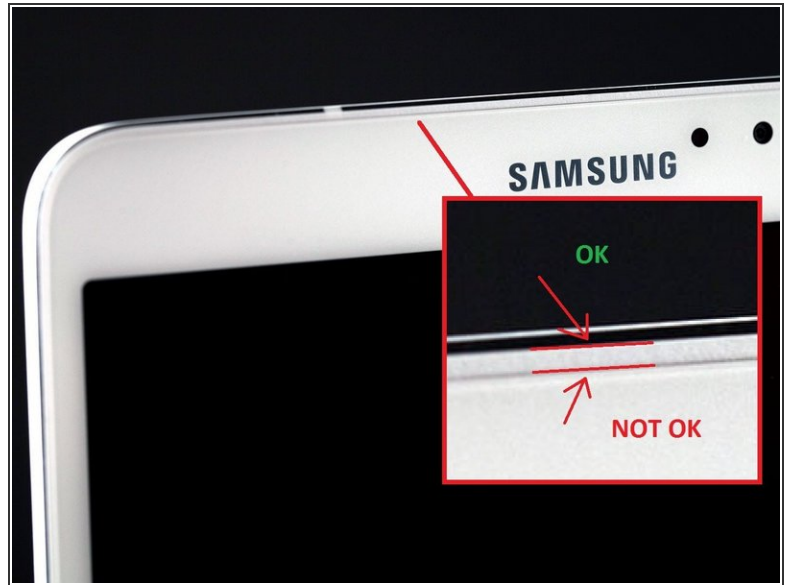
- [iFixit Opening Tools](#) (1)



### PARTS:

- [Galaxy Tab A 10.1 Rear Panel](#) (1)

## Step 1 — Back Panel

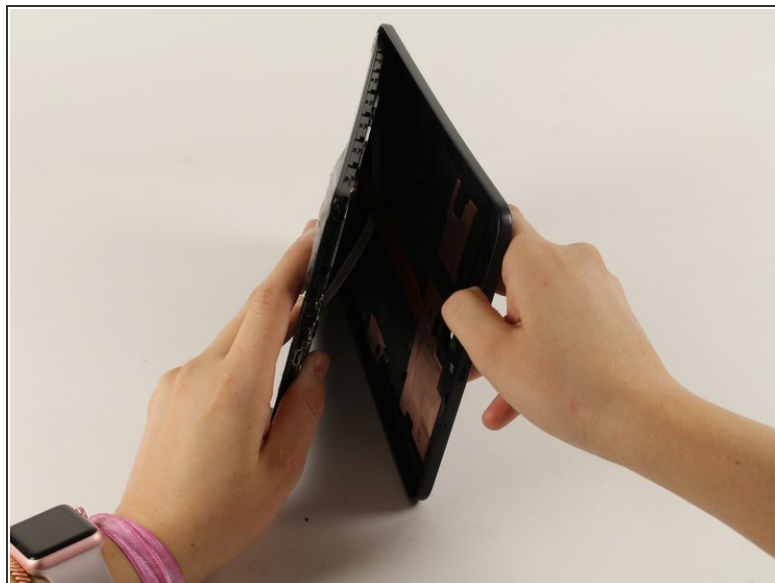


- Have the front of the device facing you.
- Begin near one of the curved edges of the device (see photo two for visual example).
- Place a plastic opening tool between the front and back panels.

⚠ If a plastic opening tool doesn't work, using a metal spudger may work, but it may damage the plastic on the device.

⚠ Remember to remove the micro SD card (if present) before you begin.

## Step 2



- Once the plastic opening tool is fully inserted, wedge it around the device's edges to separate the panels.
- Lift the back panel off of the device.
- ⓘ The back panel will make a clicking noise while being lifted off of the device.

To reassemble your device, follow these instructions in reverse order.