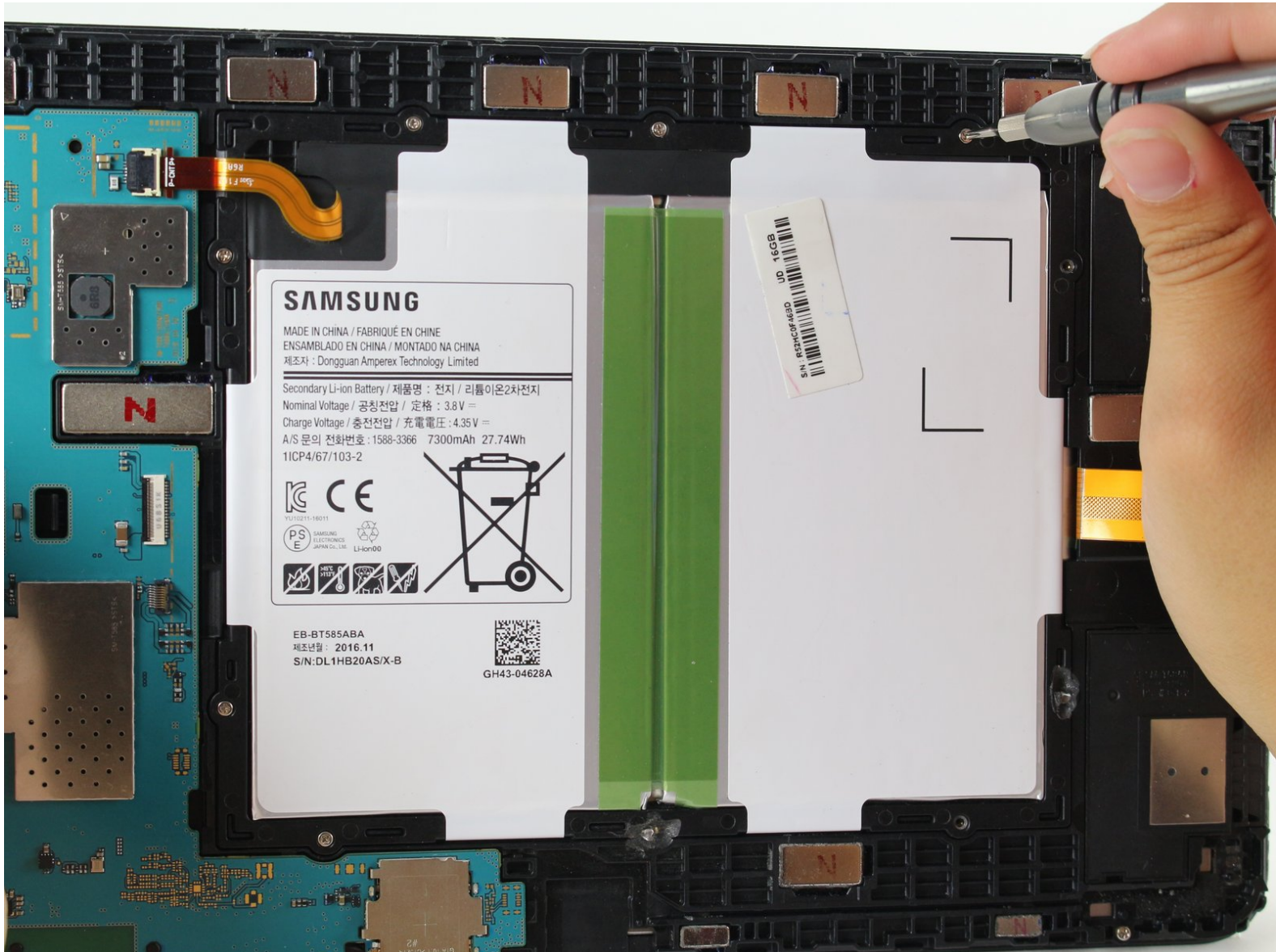




Samsung Galaxy Tab A 10.1 Battery Replacement

How to replace batteries in the Samsung Galaxy Tab A 10.1.

Written By: Isabella Li



INTRODUCTION

If you are having issues with keeping a charge or your battery is dead, use this guide to properly replace the battery in your Samsung Galaxy Tab A 10.1.



TOOLS:

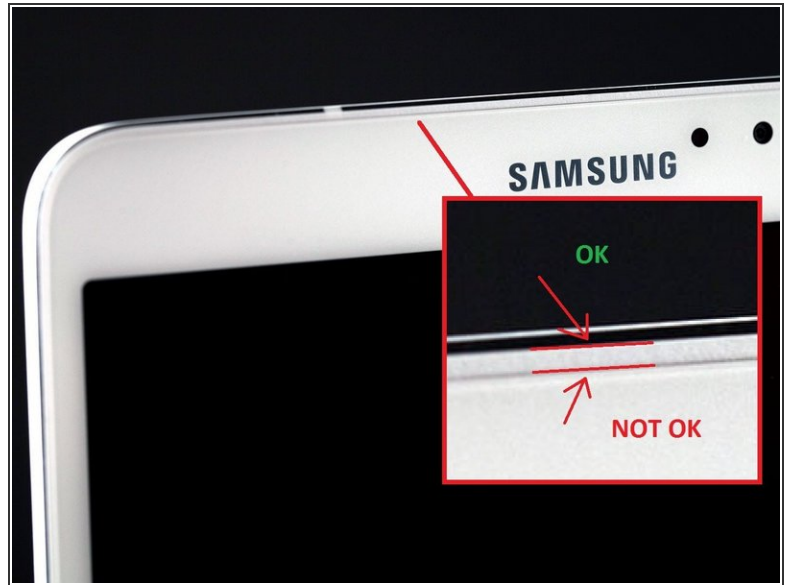
- [Heat Gun](#) (1)
- [iFixit Opening Tools](#) (1)
- [Phillips #000 Screwdriver](#) (1)



PARTS:

- [Galaxy Tab A 10.1 Replacement Battery](#) (1)

Step 1 — Back Panel



- Have the front of the device facing you.
- Begin near one of the curved edges of the device (see photo two for visual example).
- Place a plastic opening tool between the front and back panels.

⚠ If a plastic opening tool doesn't work, using a metal spudger may work, but it may damage the plastic on the device.

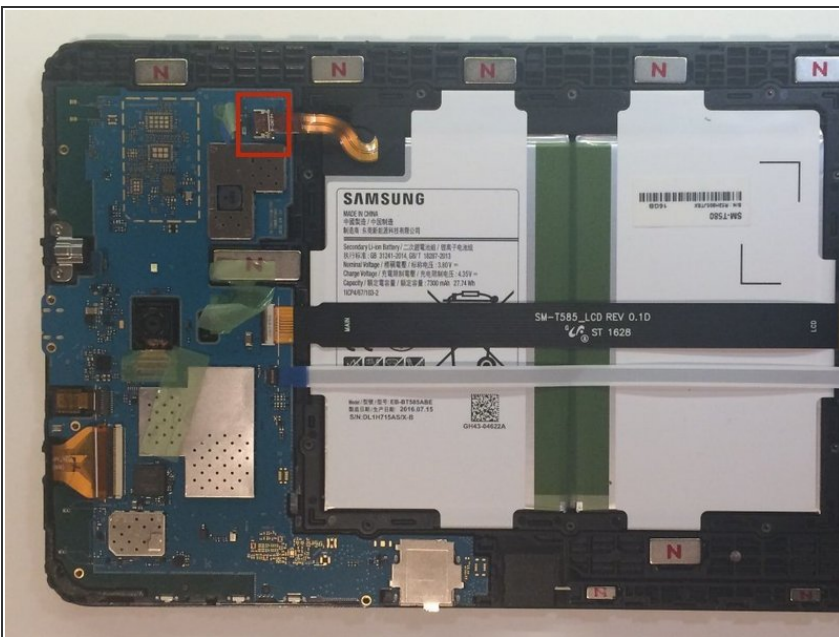
⚠ Remember to remove the micro SD card (if present) before you begin.

Step 2



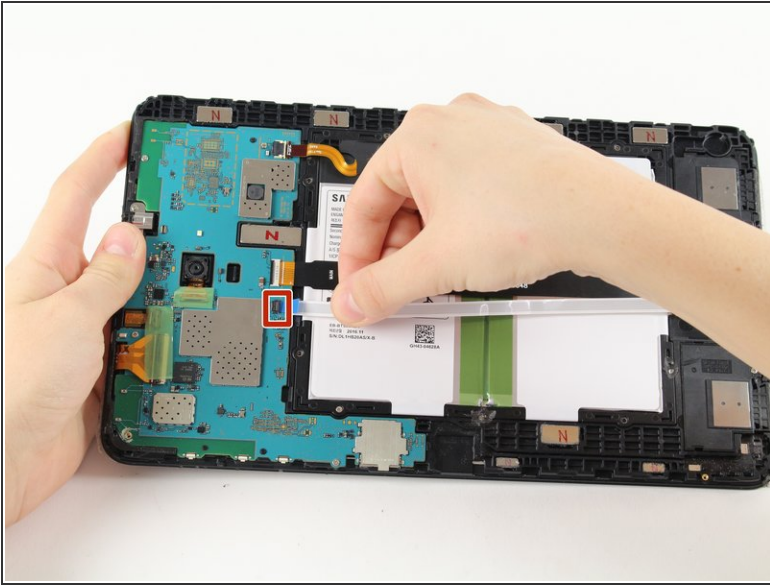
- Once the plastic opening tool is fully inserted, wedge it around the device's edges to separate the panels.
- Lift the back panel off of the device.
- ⓘ The back panel will make a clicking noise while being lifted off of the device.

Step 3 — Disconnecting the battery



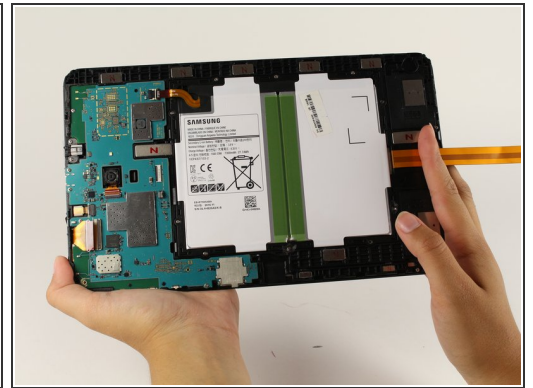
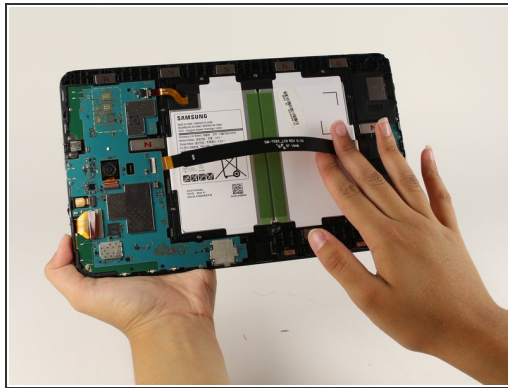
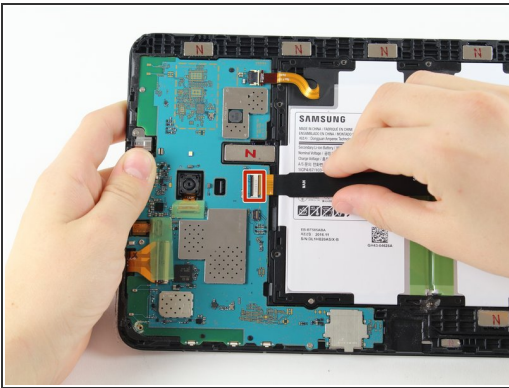
- Remove the adhesive film and flip up the retaining flap on the ZIF battery connector.
- Slide the orange battery ribbon cable out of the ZIF connector.

Step 4



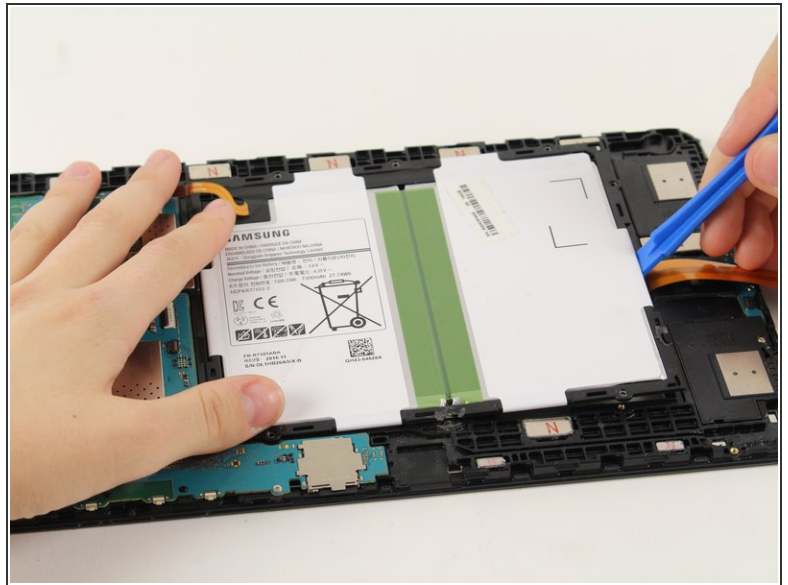
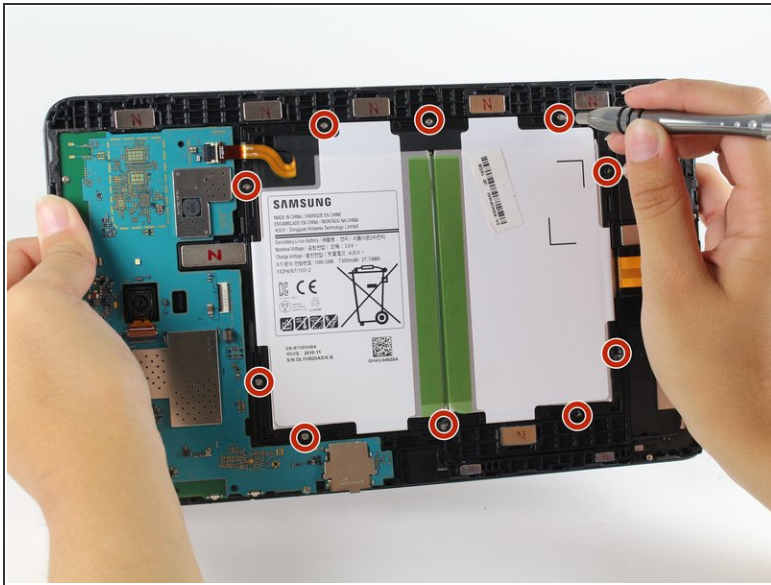
- Remove the adhesive film, lift the retaining tab and withdraw the white speaker ribbon.

Step 5



- Lift the retaining tab and withdraw the black LCD ribbon.

Step 6 — Battery removal



- Using a Phillips #000 screwdriver, remove the ten 4 mm screws around the battery.
 - Slide a plastic opening tool under the bottom of the battery close to the speakers and lift up.
- ⚠ The large rectangular white and black piece is the entire battery. Be careful not to puncture it.

To reassemble your device, follow these instructions in reverse order.