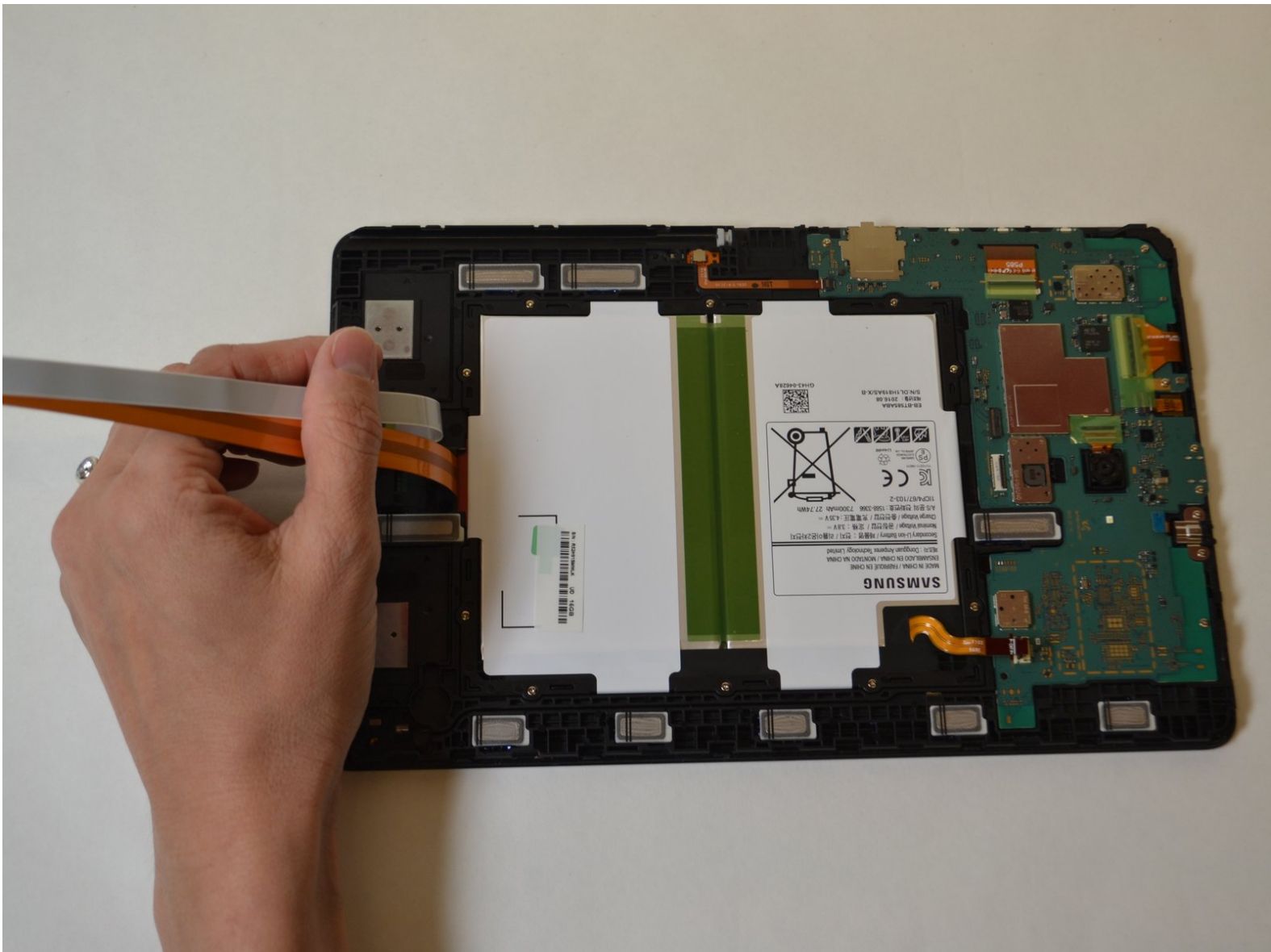




Samsung Galaxy Tab A 10.1 S-Pen Battery Replacement

This guide will provide step by step instructions on how to replace a battery on a Samsung Galaxy Tab A 10.1 tablet.

Written By: Guneet Bawa



This document was generated on 2019-09-29 02:23:40 AM (MST).

INTRODUCTION

This guide will provide step by step instructions on how to replace a battery on a Samsung Galaxy Tab A 10.1 tablet.



TOOLS:

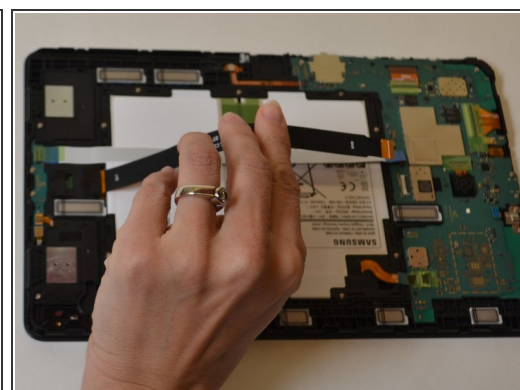
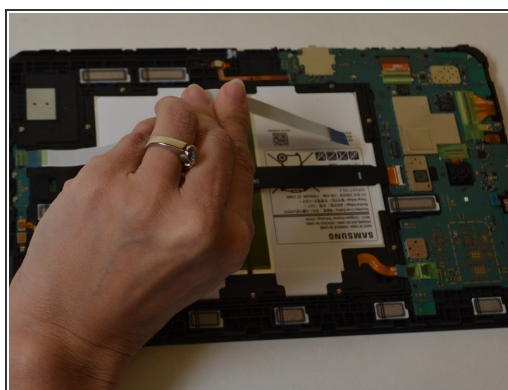
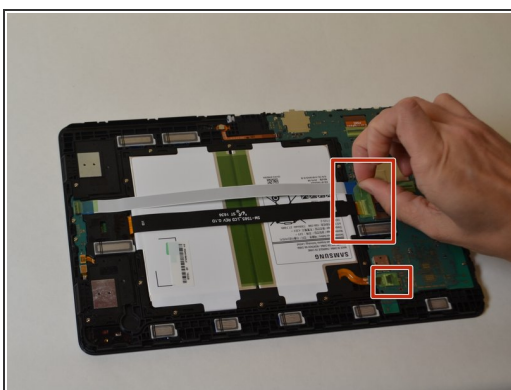
- [Phillips #000 Screwdriver](#) (1)
 - [iFixit Opening Tools](#) (1)
-

Step 1 — Battery



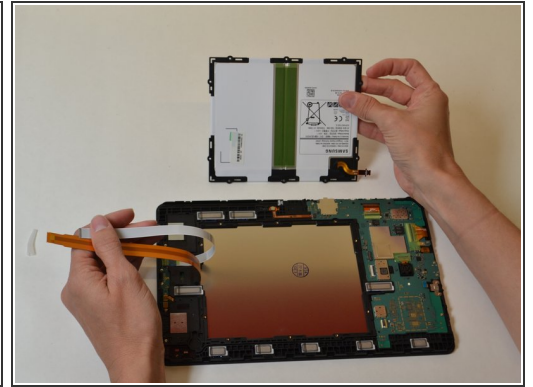
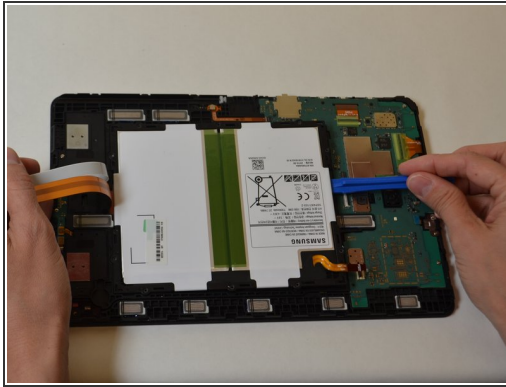
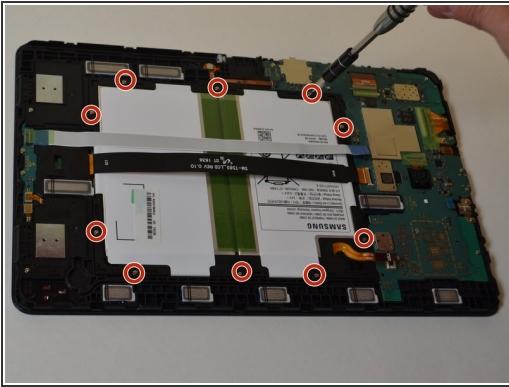
- Remove all external power and turn off the tablet.
- Insert a plastic opening tool between the screen and rear casing.
- Pry the screen and rear casing apart.

Step 2



- Remove the three green pieces of tape covering the white, black, and gold ribbon cables.
- Use a spudger to flip up the retaining flap on the three ribbon cable [ZIF](#) sockets.
- Pull the ribbon cables out of the sockets.

Step 3



- Remove the ten 4mm Phillips #000 screws from the battery.
- Use a plastic opening tool to pry up the battery.
- Remove the battery.

To reassemble your device, follow these instructions in reverse order.