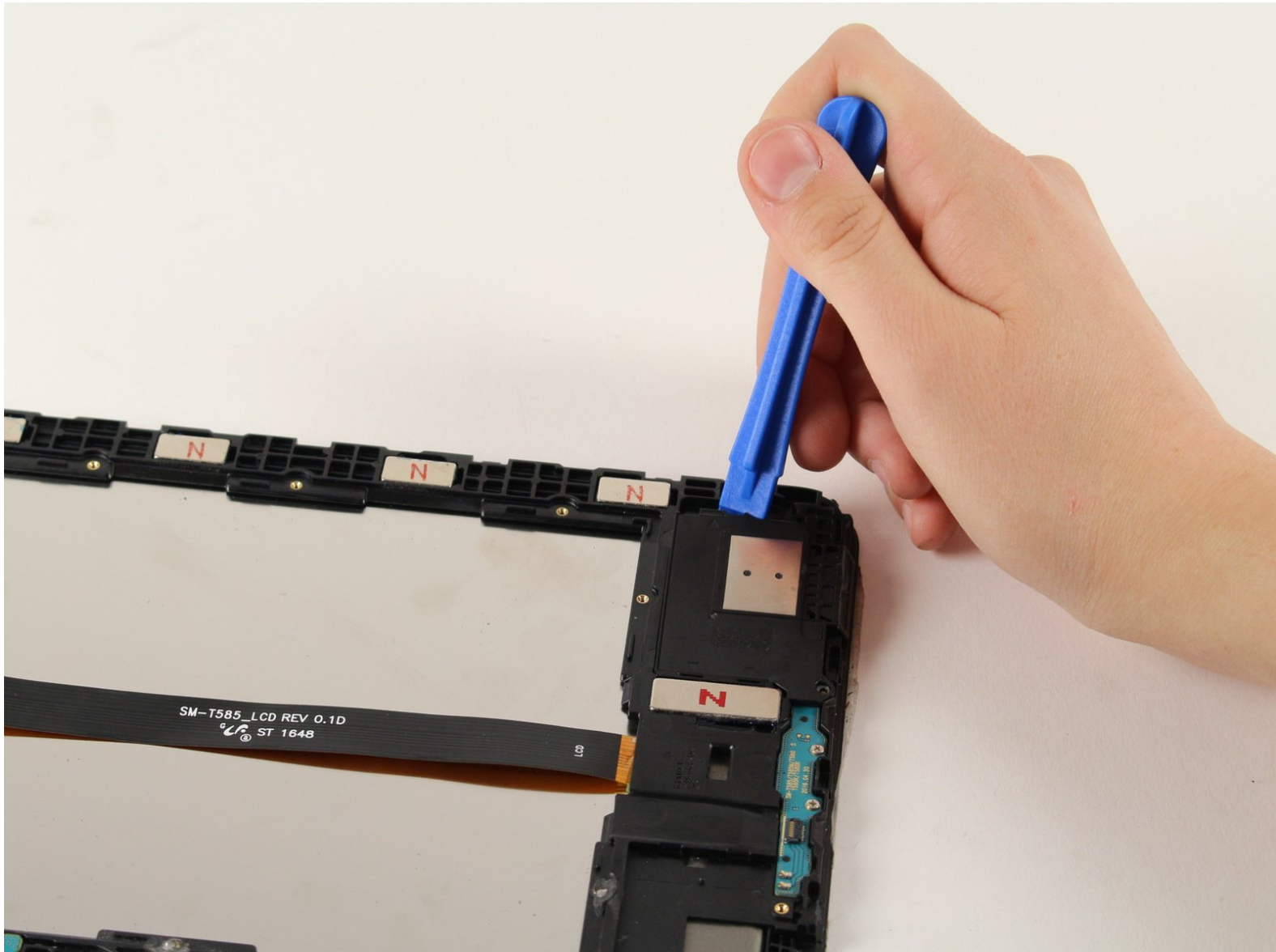




# Samsung Galaxy Tab A 10.1 Speaker Replacement

This guide will instruct you on how to replace the speakers of the Samsung Galaxy Tab A 10.1.

Written By: Isabella Li



## INTRODUCTION

If there is no sound coming from your speakers, this guide will instruct you on how to replace the speakers.



### TOOLS:

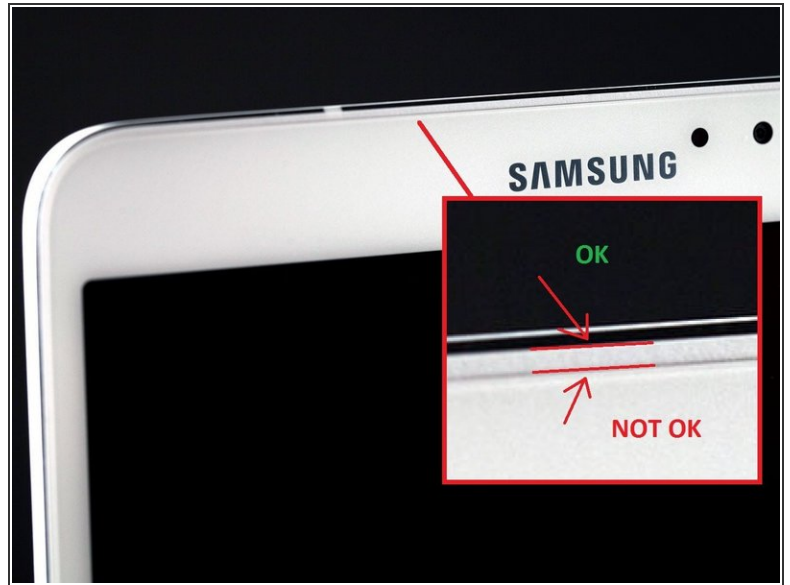
- [iFixit Opening Tools](#) (1)
- [Phillips #000 Screwdriver](#) (1)



### PARTS:

- [Galaxy Tab A 10.1 Right Speaker](#) (1)
- [Galaxy Tab A 10.1 Left Speaker](#) (1)

## Step 1 — Back Panel



- Have the front of the device facing you.
- Begin near one of the curved edges of the device (see photo two for visual example).
- Place a plastic opening tool between the front and back panels.

⚠ If a plastic opening tool doesn't work, using a metal spudger may work, but it may damage the plastic on the device.

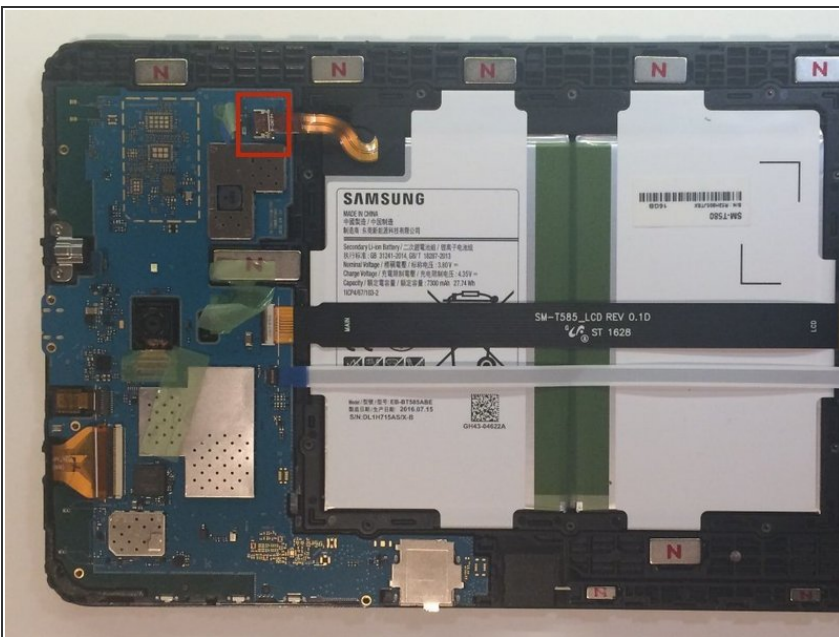
⚠ Remember to remove the micro SD card (if present) before you begin.

## Step 2



- Once the plastic opening tool is fully inserted, wedge it around the device's edges to separate the panels.
- Lift the back panel off of the device.
- i** The back panel will make a clicking noise while being lifted off of the device.

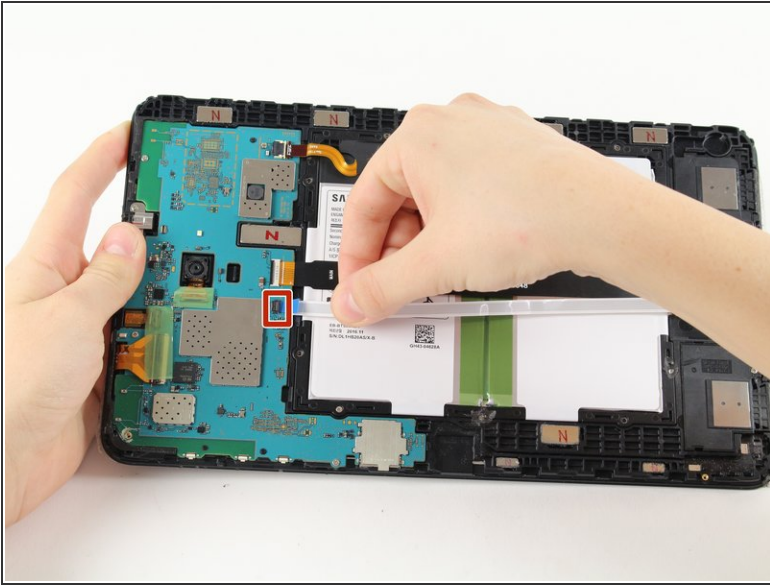
## Step 3 — Disconnecting the battery



- Remove the adhesive film and flip up the retaining flap on the ZIF battery connector.
- Slide the orange battery ribbon cable out of the ZIF connector.

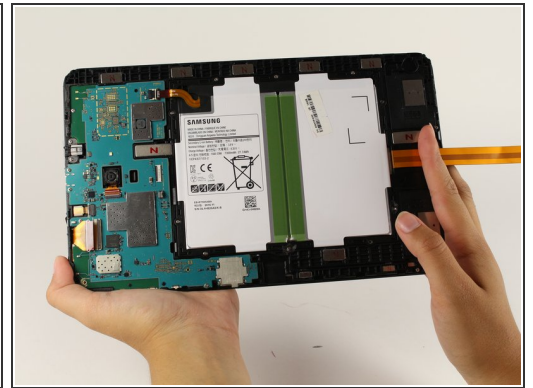
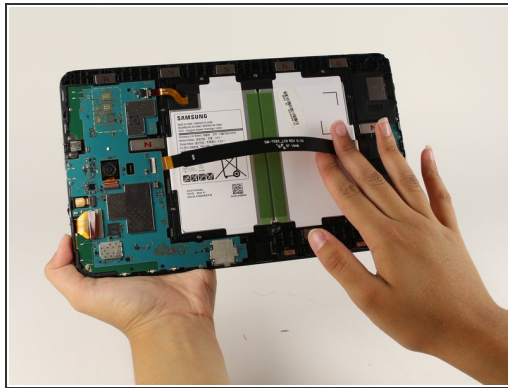
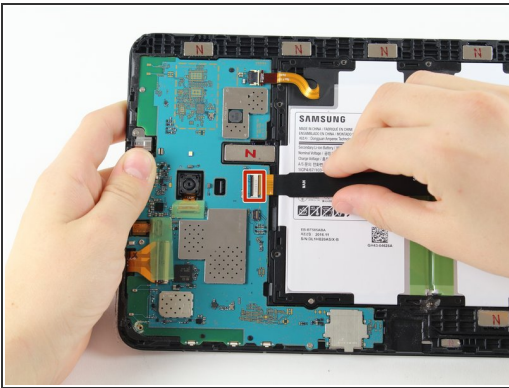


## Step 4



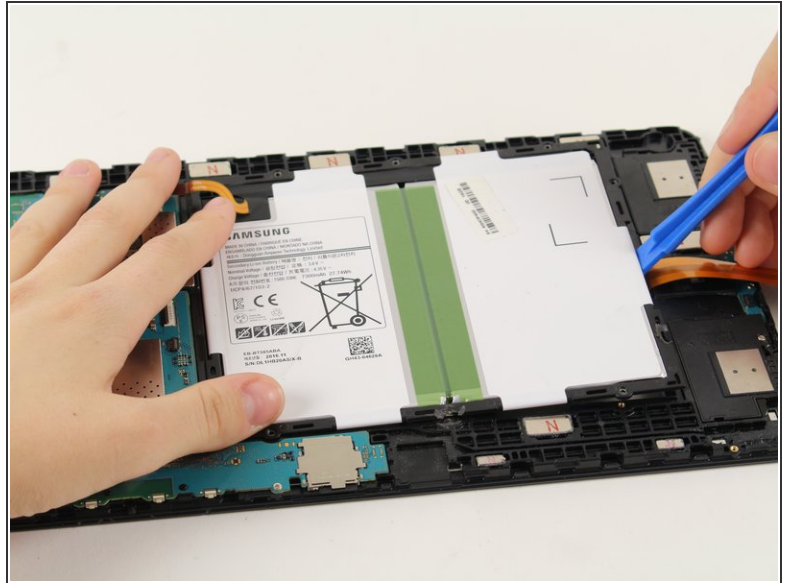
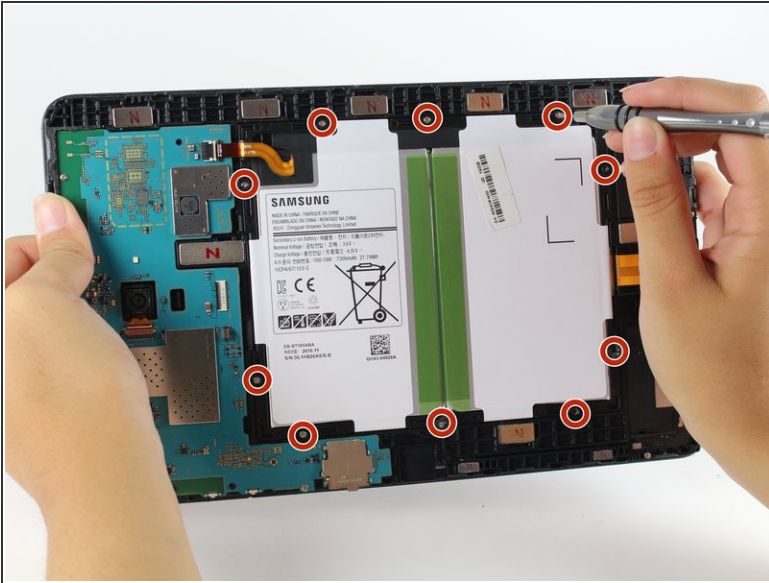
- Remove the adhesive film, lift the retaining tab and withdraw the white speaker ribbon.

## Step 5



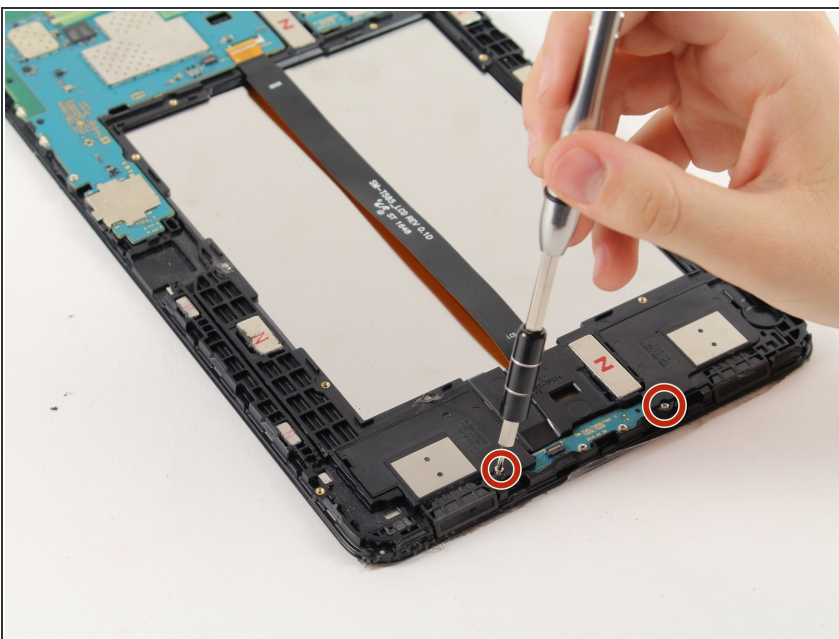
- Lift the retaining tab and withdraw the black LCD ribbon.

## Step 6 — Battery removal



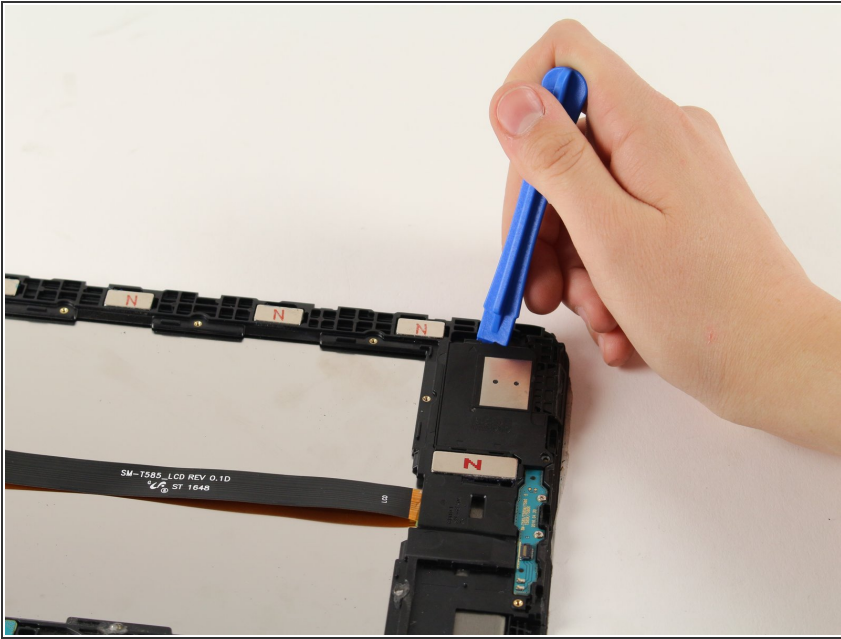
- Using a Phillips #000 screwdriver, remove the ten 4 mm screws around the battery.
  - Slide a plastic opening tool under the bottom of the battery close to the speakers and lift up.
- ⚠ The large rectangular white and black piece is the entire battery. Be careful not to puncture it.

## Step 7 — Speaker



- Use Phillips # 000 to remove the 4 mm .3 cm screw on each speaker.
- ⓘ If you encounter a stripped screw, see iFixit's guide on how to remove it [here](#).

## Step 8



- Place the plastic opening tool on the edge of the speaker.
- Lodge the plastic opening tool under each speaker and lift them up and out of the device.

To reassemble your device, follow these instructions in reverse order.