



Samsung Galaxy Tab A Motherboard Replacement

This guide will show you how to access and replace the motherboard.

Written By: Michael Wozny



INTRODUCTION

A damaged/broken or even corrupted motherboard can render an entire device useless. This guide highlights how to remove the back cover of the tablet in order to get to the motherboard as a means to replace it.



TOOLS:

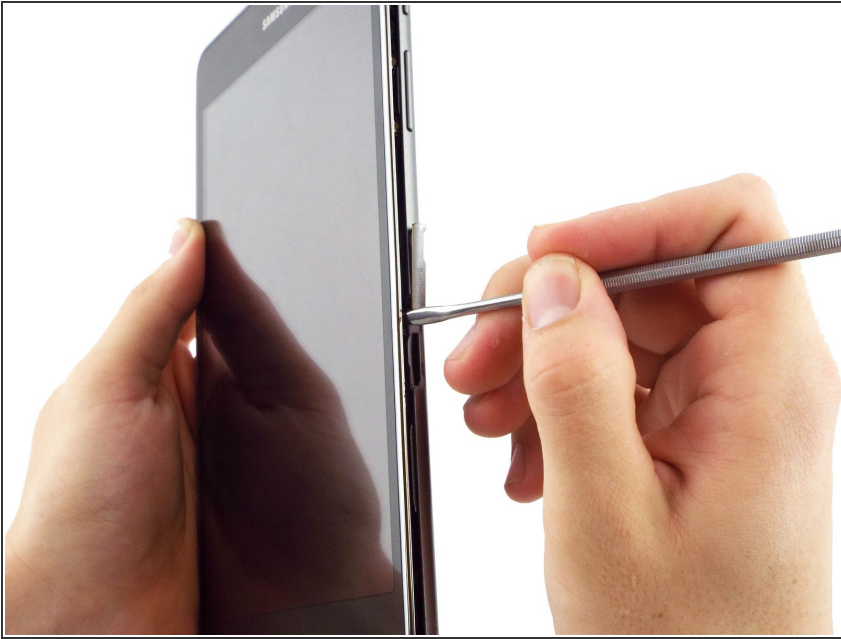
- [Spudger](#) (1)
- [Metal Spudger Set](#) (1)
- [Tweezers](#) (1)
- [Phillips #0 Screwdriver](#) (1)



PARTS:

- [Samsung Galaxy Tab A 8.0 Wi-Fi Motherboard](#) (1)
- [Samsung Galaxy Tab A 8.0 4G Motherboard](#) (1)
- [Samsung Galaxy Tab A 8.0 Screen](#) (1)

Step 1 — Motherboard



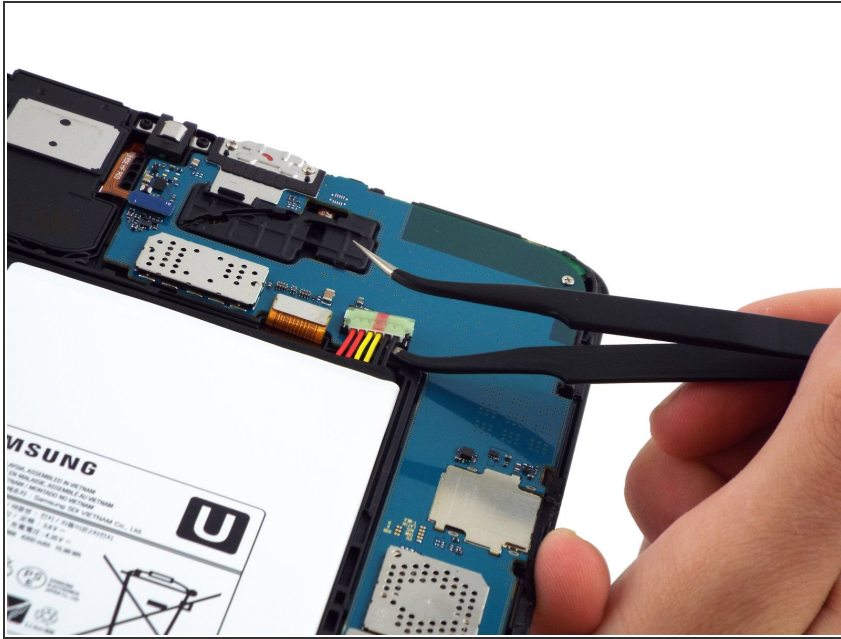
- ⚠ Make sure the device is turned off before attempting to disassemble it.
- At the top portion of the memory card slot, use the small metal spudger to create separation between the back cover and the rest of the device.
- ⓘ The small metal spudger is only used to create separation between the back cover and the rest of the device, not to remove the back cover.

Step 2



- Use the intermediate metal spudger in place of the small metal spudger to remove the back cover. This is done by sliding the intermediate metal spudger around the perimeter of the device, beginning at the top portion of the memory card slot.
- The second picture shows the internal portion of the device once the back cover is removed.

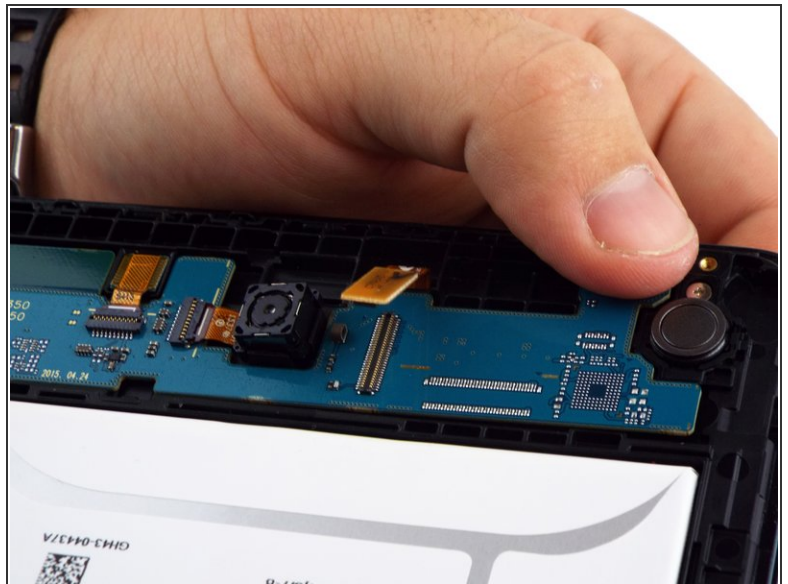
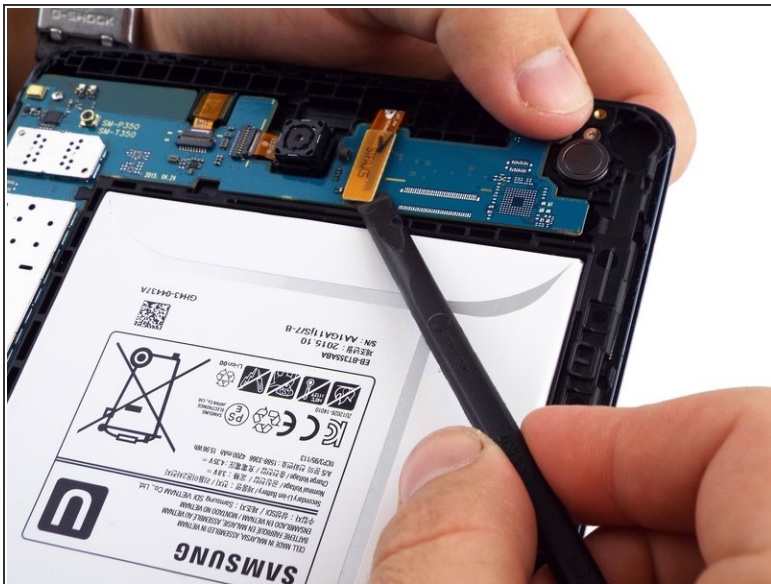
Step 3



- Use the bent precision tweezers to disconnect the battery connector from the motherboard.

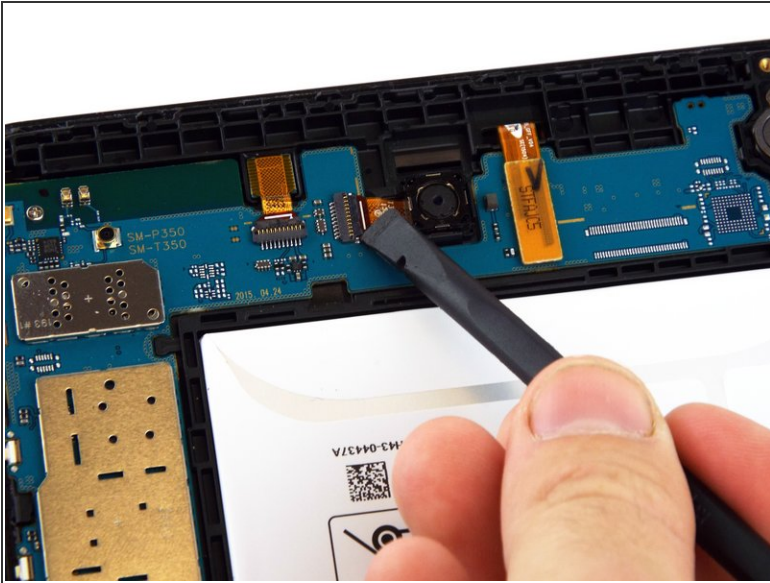
⚠ Avoid touching the motherboard with the tweezers. Metal tools such as the tweezers can scratch the motherboard and potentially cause damage.

Step 4



- Use the spudger to disconnect the flexible display cable connector from the motherboard.
- The first and second pictures show what the display looks like when it is still connected to the motherboard and once it is disconnected, respectively.

Step 5



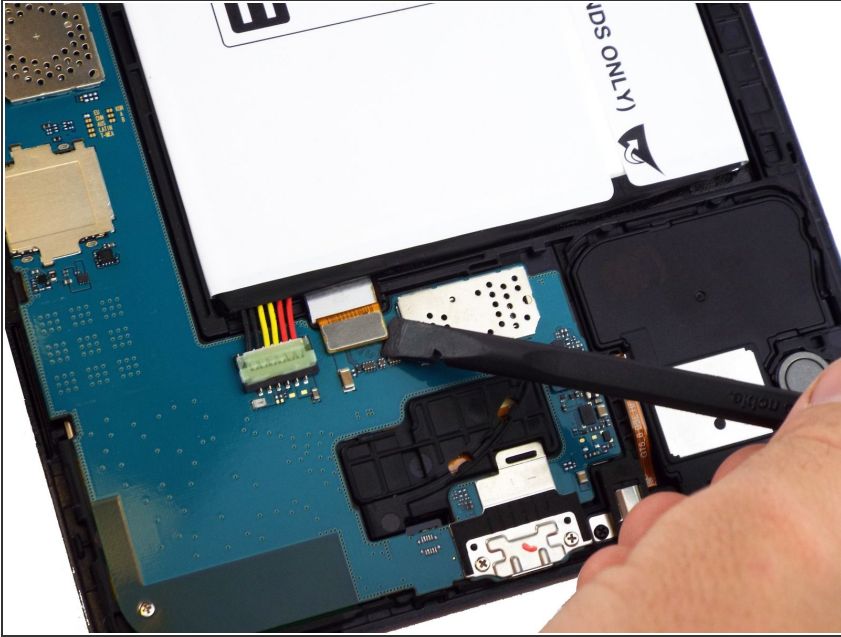
- Use the spudger to flip up the ZIF connector to unlock the rear facing camera's flexible cable.
- Then use tweezers to gently remove the rear facing camera from the device.

Step 6



- Use the spudger to flip up the ZIF connector to unlock the front facing camera's flexible cable.
- Then use tweezers to gently remove the front facing camera from the device.

Step 7



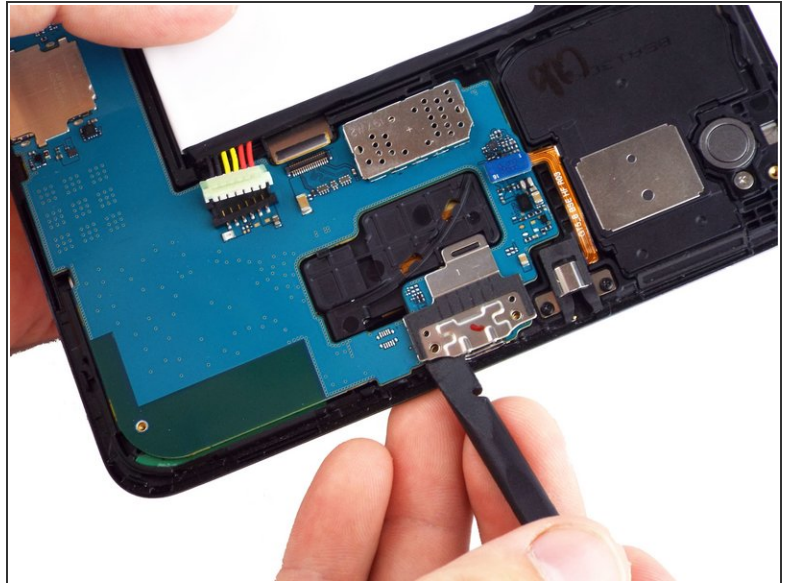
- Use the spudger to disconnect the LCD panel's flexible cable connector.

Step 8



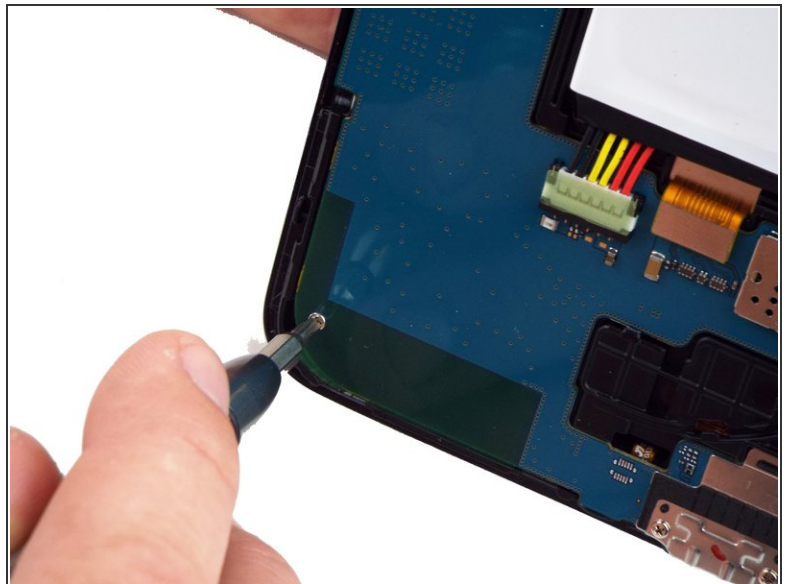
- Use the spudger to disconnect the 3.5mm headset jack's flexible cable connector.

Step 9



- Use the PH0 screwdriver bit to remove the two 3 mm screws connecting the USB port shield to the midframe.
- Then use the spudger tool to remove the USB port shield.

Step 10



- Use the PH0 screwdriver bit to remove the two 3 mm screws on the left side of the motherboard.

Step 11



- Using the flat end of a spudger, carefully wedge the motherboard from the case.
- ⚠ Be patient, using gentle and even force, while wedging the motherboard out of the midframe with the spudger. Excessive flexing of the board may cause damage to components or circuit traces.
- Using your fingers, gently remove the motherboard out of the device.
- Once the motherboard is removed, the device should look like as illustrated in the third picture.

To reassemble your device, follow these instructions in reverse order.