



# Samsung Galaxy Tab A Rear Facing Camera Replacement

This guide will show you how to access and replace the camera.

Written By: Michael Wozny



## INTRODUCTION

A camera installed in a phone is susceptible to damage if the phone is dropped and lands on the area where the camera is located. This guide highlights how to remove the back cover of the tablet in order to get to the camera as a means to replace it.



### TOOLS:

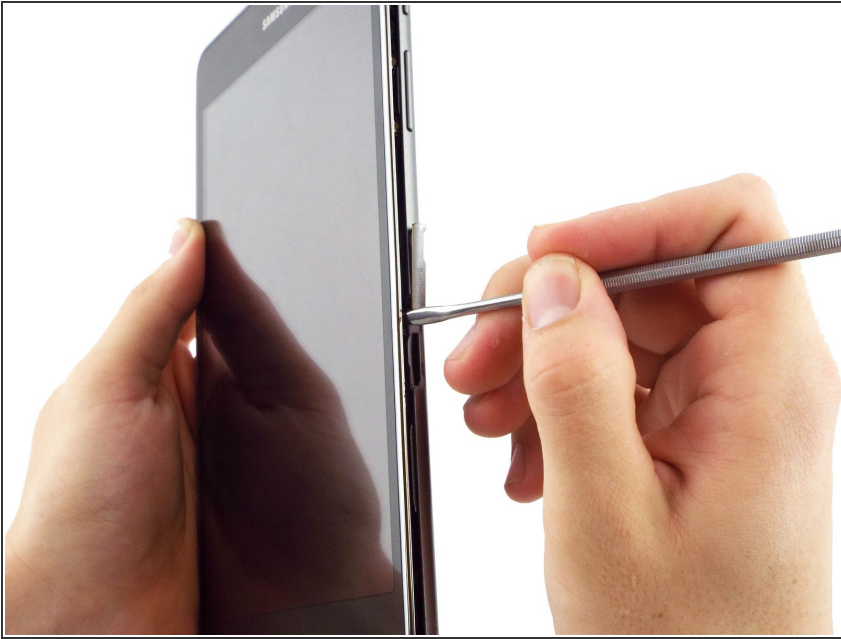
- [Spudger](#) (1)
- [Tweezers](#) (1)
- [Metal Spudger Set](#) (1)



### PARTS:

- [Samsung Galaxy Tab A 8.0 Rear Camera](#) (1)

## Step 1 — Rear Facing Camera



- ⚠ Make sure the device is turned off before attempting to disassemble it.
- At the top portion of the memory card slot, use the small metal spudger to create separation between the back cover and the rest of the device.
- ⓘ The small metal spudger is only used to create separation between the back cover and the rest of the device, not to remove the back cover.

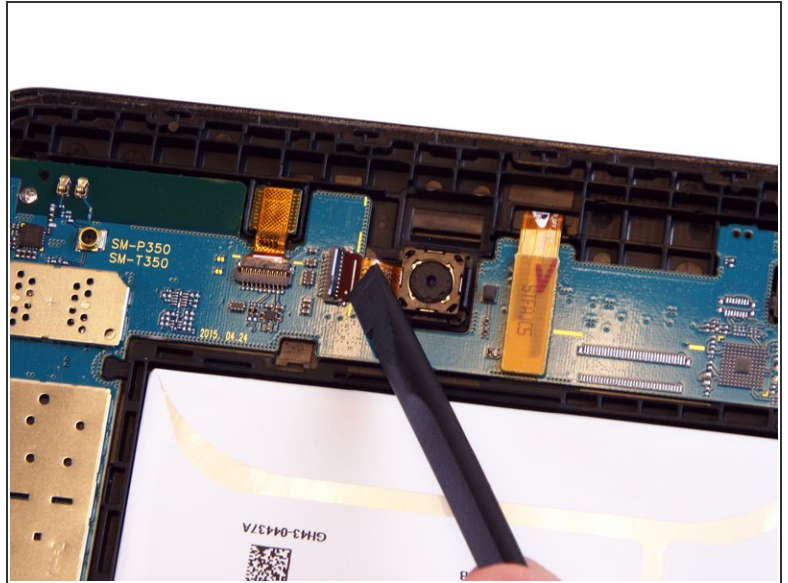
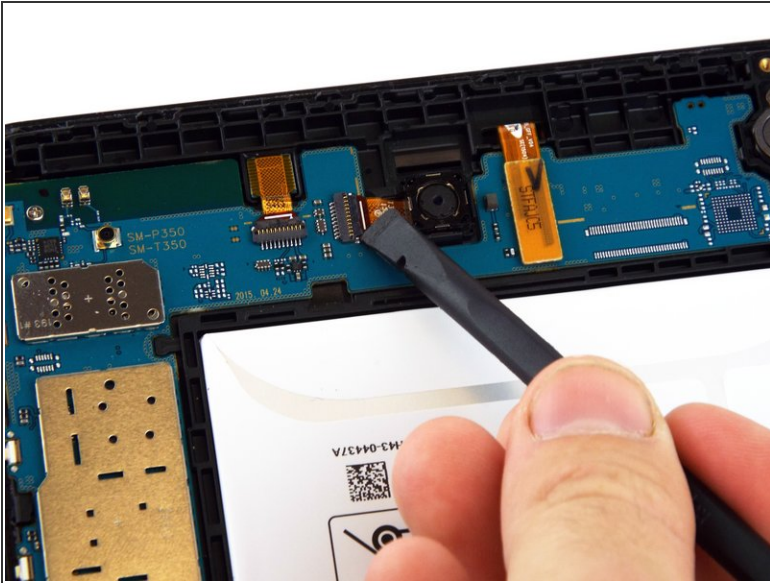
## Step 2



- Use the intermediate metal spudger in place of the small metal spudger to remove the back cover. This is done by sliding the intermediate metal spudger around the perimeter of the device, beginning at the top portion of the memory card slot.
- The second picture shows the internal portion of the device once the back cover is removed.

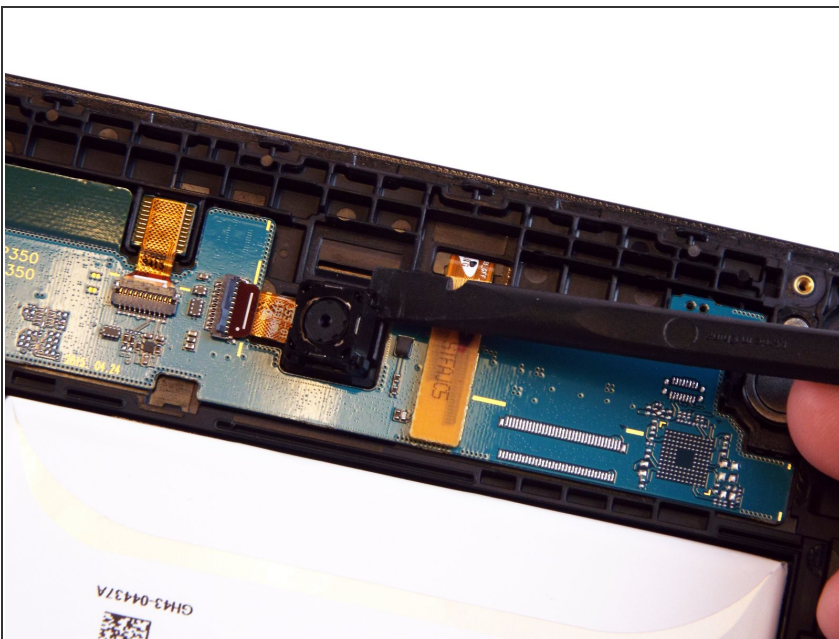


## Step 3



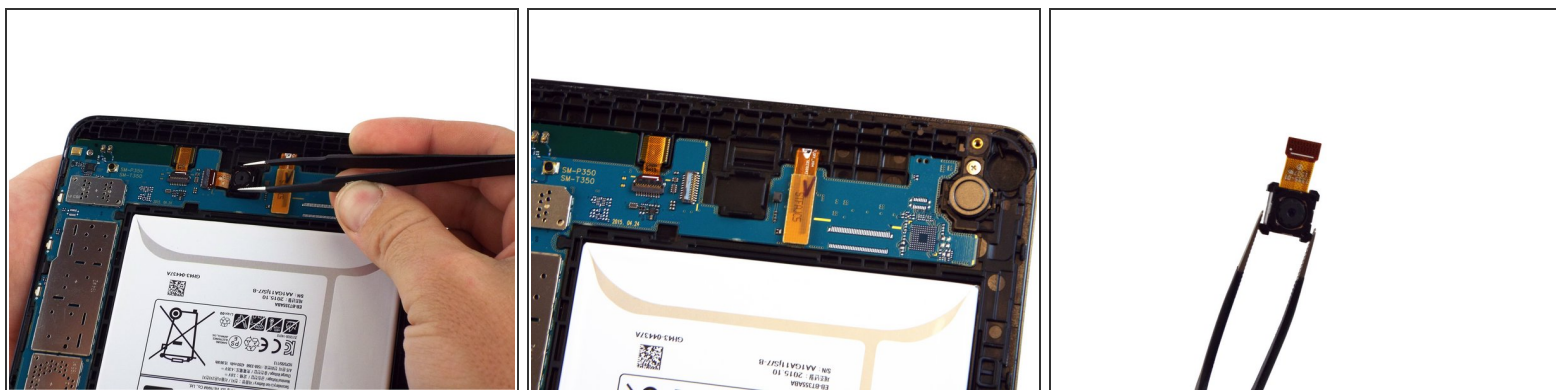
- Use the spudger to disconnect the camera from the motherboard.
- ⓘ This step should be done at the yellow rubber portion of the camera.
- The first and second pictures show what the camera looks like when it is still connected to the motherboard and once it is disconnected, respectively.

## Step 4



- Use the spudger to remove the main body of the camera from the rest of the device. This should be done anywhere around the black-framed perimeter of the camera.

## Step 5



- Use the tweezers to fully remove the camera from the rest of the device. The camera should be pulled out and away from where the device was connected to the motherboard in Step 3.
- The second picture illustrates what the device should look like once the camera is removed.

To reassemble your device, follow these instructions in reverse order.