



# Samsung Galaxy Tab E 8.0 Screen Replacement

This guide will show you how to replace the screen on the Samsung Galaxy Tab E 8.0.

Written By: Chrissy B



## INTRODUCTION

The screen of the Samsung Galaxy Tab E 8.0 may become damaged if the device is dropped or struck by a hard object. This guide shows how to replace the tablet's screen, which is attached to the front panel.



### TOOLS:

- [JIS #00 Screwdriver](#) (1)
  - [iFixit Opening Tools](#) (1)
  - [Tweezers](#) (1)
  - [Metal Spudger](#) (1)
-

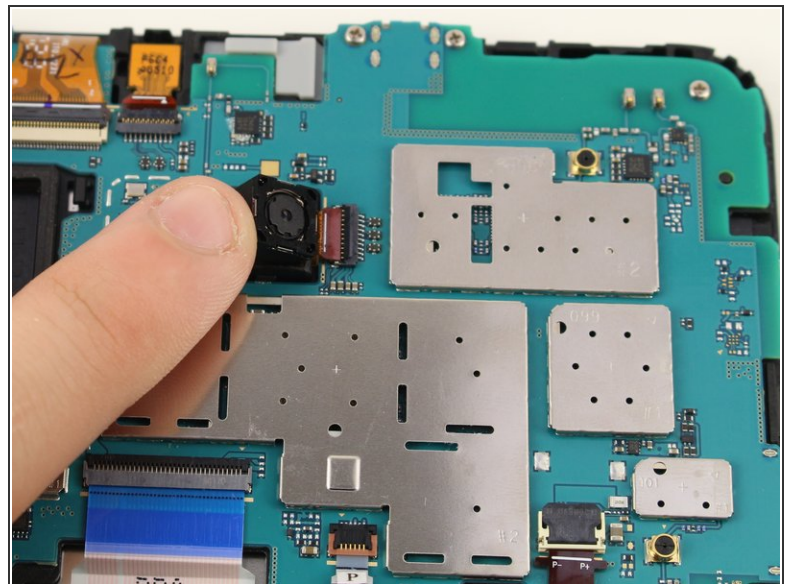
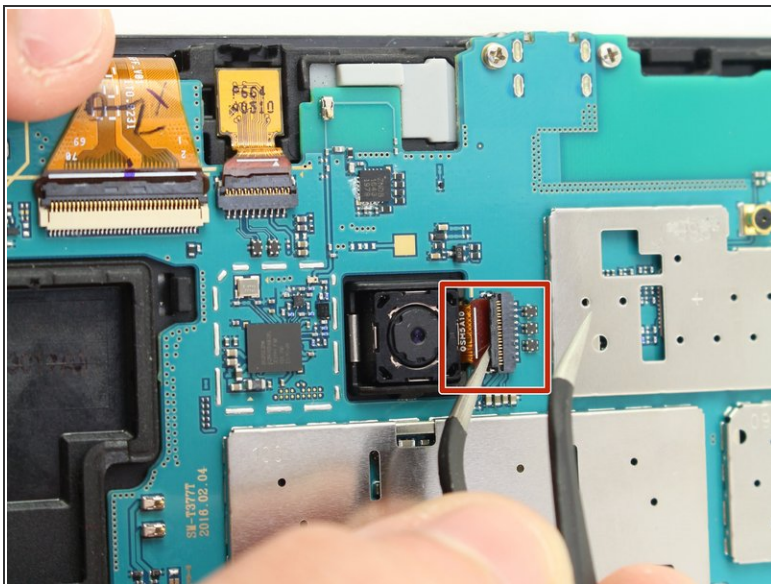
## Step 1 — Back Panel



- Use the iFixit Opening Tool to pry off the back case, moving the tool around the screen.

⚠ Make sure the device is off and the SD card is removed before taking off the back casing.

## Step 2 — Back Camera



- Use the tweezers to lift the switch connecting the back camera to the motherboard.
- Use your hand to remove the back camera from the motherboard.

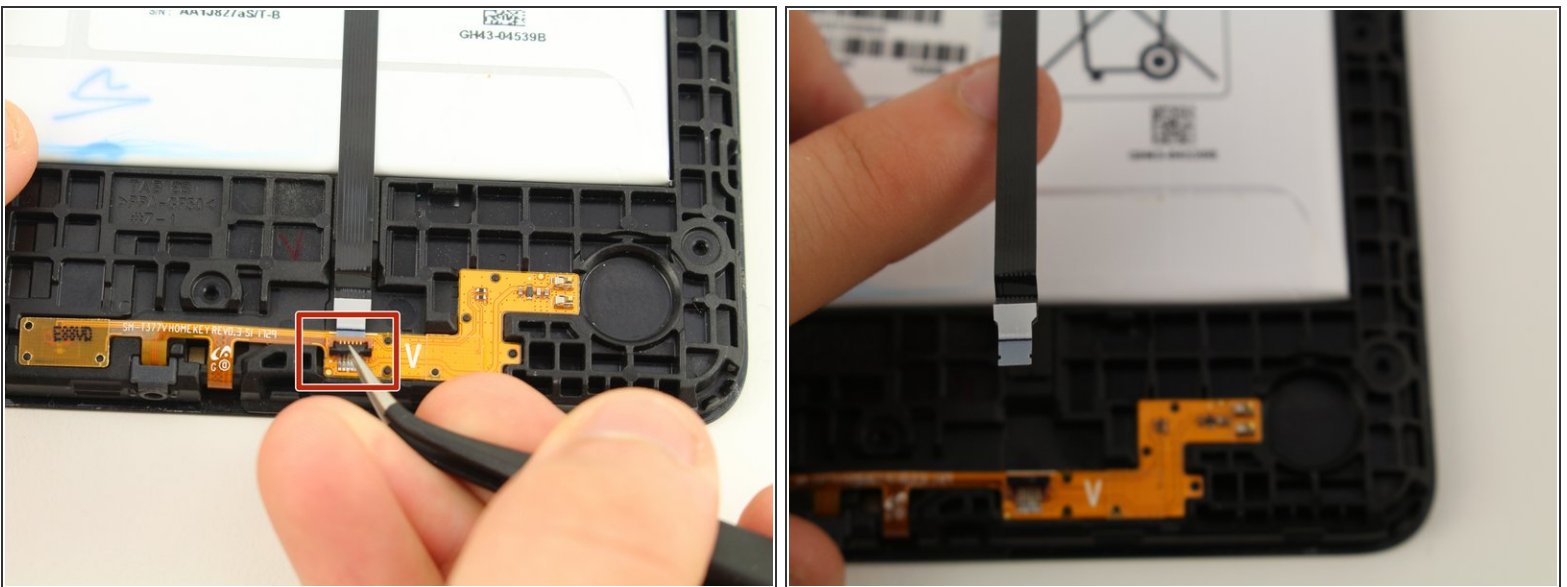


### Step 3 — Front Camera



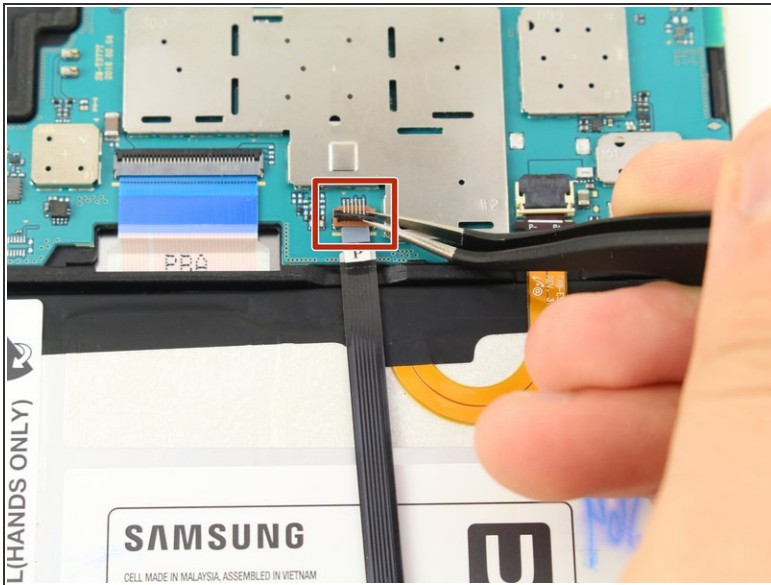
- Use the tweezers to lift the switch connecting the front camera to the motherboard.
- Remove the front camera from the motherboard by lifting with the tweezers.

### Step 4 — Motherboard



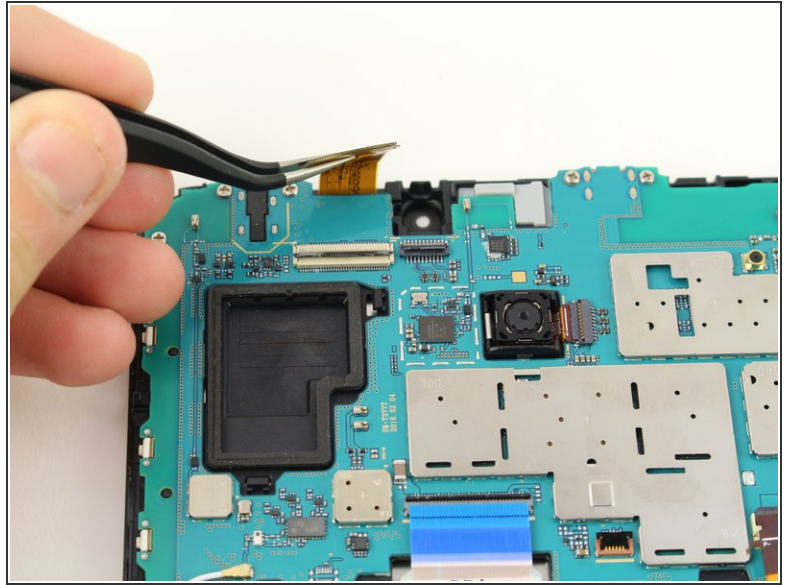
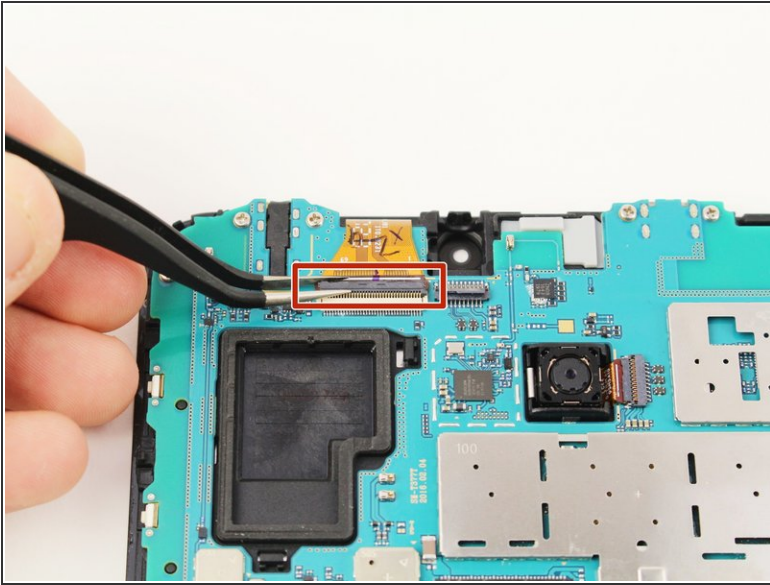
- Use the tweezers to flip the switch on the bottom of the strap that goes over the battery.
- Release the strap from the switch by lifting the strap with your hand.

## Step 5



- Use the tweezers to flip the switch that connects the top of the strap to the motherboard.
- Lift the top end of the strap with your hand and remove the strap completely from the device.

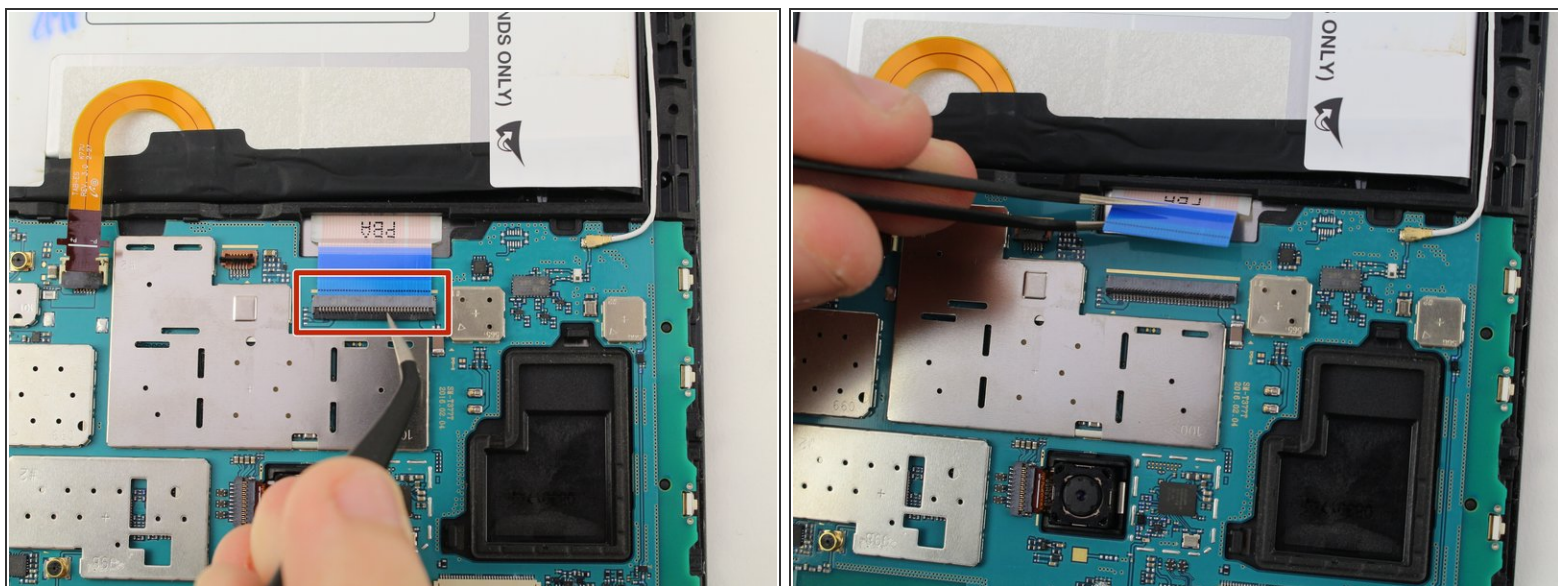
## Step 6



- Use the tweezers to flip the switch of the connector.
  - Lift the connector from the motherboard.
- i** This connector does not come completely off, but disconnects from the motherboard.

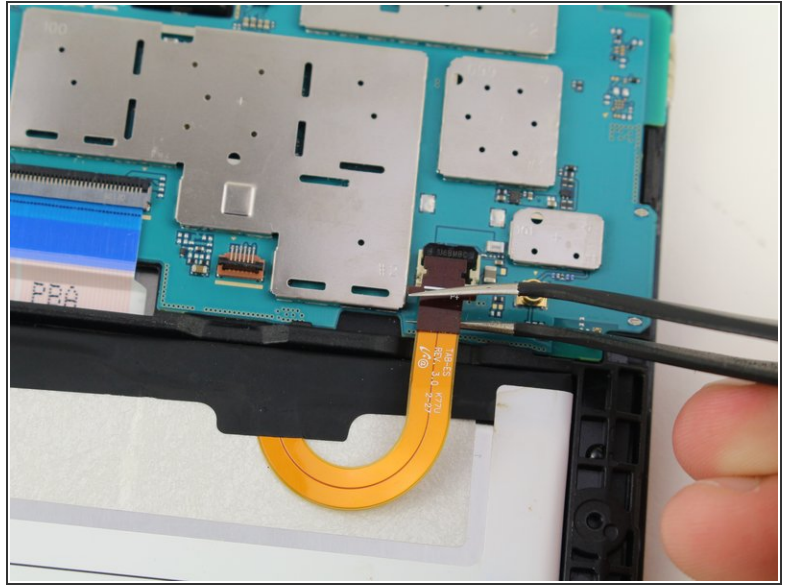
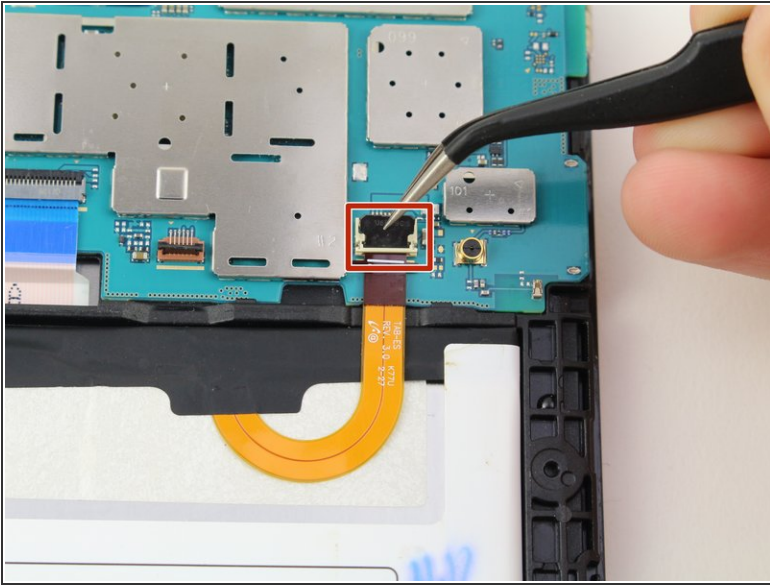


## Step 7



- Use the tweezers to flip the switch of the blue connector on the motherboard.
- Lift the connector from the motherboard.
- ⓘ This switch can detach from the device, but just needs to disconnect from the motherboard.
- ⓘ Ensure the blue ribbon cable is not under the motherboard upon reassembly.

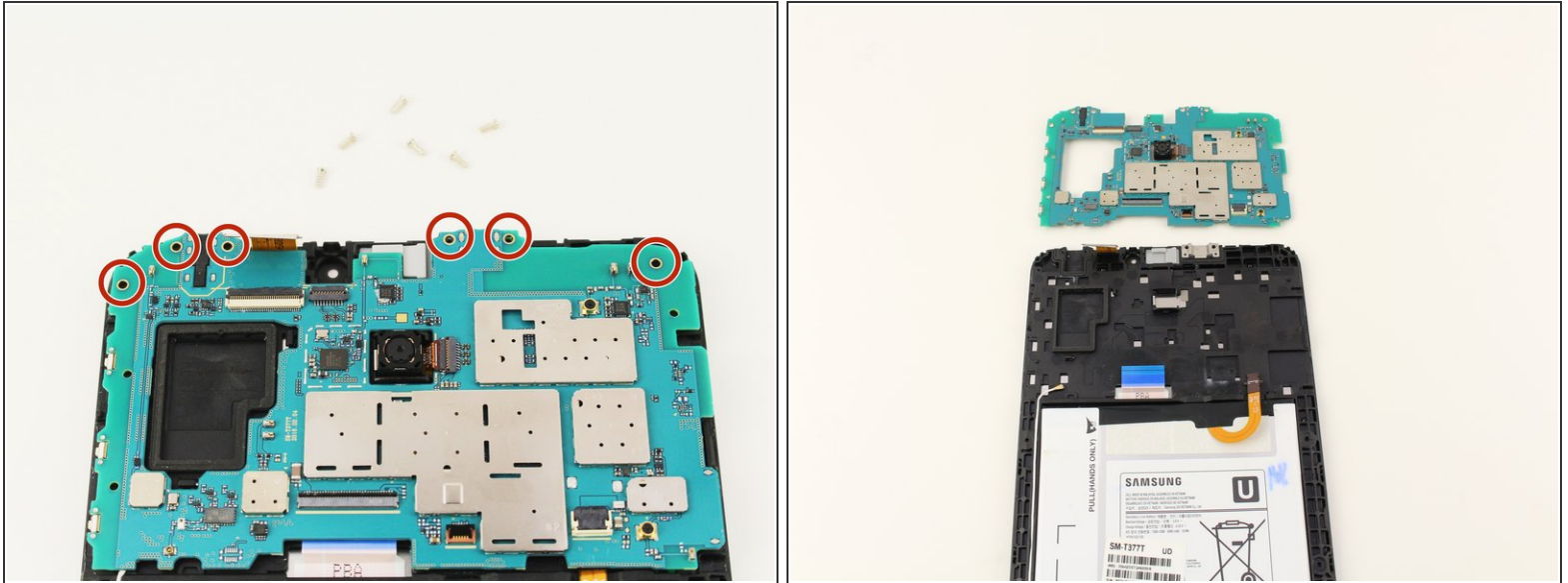
## Step 8



- Use the tweezers to flip the switch of the connector that runs from the battery to the motherboard.
  - Lift the connector from the motherboard.
- i** This switch can detach from the device, but just needs to disconnect from the motherboard.

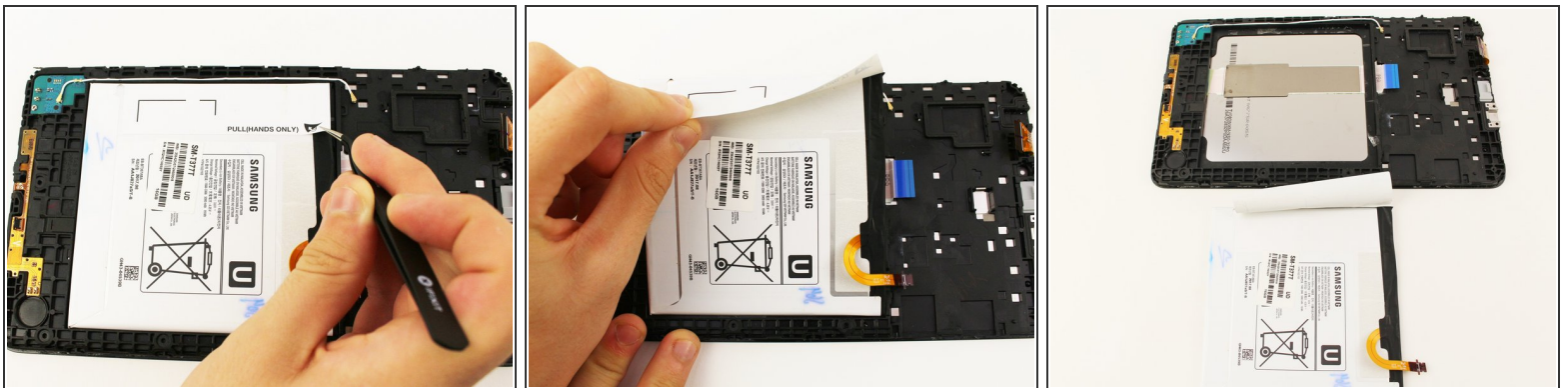


## Step 9



- Use a JIS #00 screwdriver to remove the six 4.5mm screws at the top of the motherboard.
- Lift the motherboard with your hand to detach the motherboard from the device.

## Step 10 — Battery



- Use the tweezers to lift the flap on the left end of the battery and pull up with your hand to remove the battery.
- ❗ The battery is held by an adhesive on the back, so it will take some force to remove.

## Step 11 — Screen



- Use an iOpener or a heat gun/hair dryer to warm the outer 1/2 inch of the screen. It should be very warm but not too hot to touch or you may cause heat damage to components inside the device.
- Use the iFixit Opening Tool to get between the plastic screen and the device to pry off the screen.
- ⓘ The metal spudger may be needed to get between the screen.
- ⚠ The metal spudger may cause more damage to the screen if used with force.

## Step 12



- Use the metal spudger to get between the device and the internal screen.
- Pry out the screen from the device.

To reassemble your device, follow these instructions in reverse order.