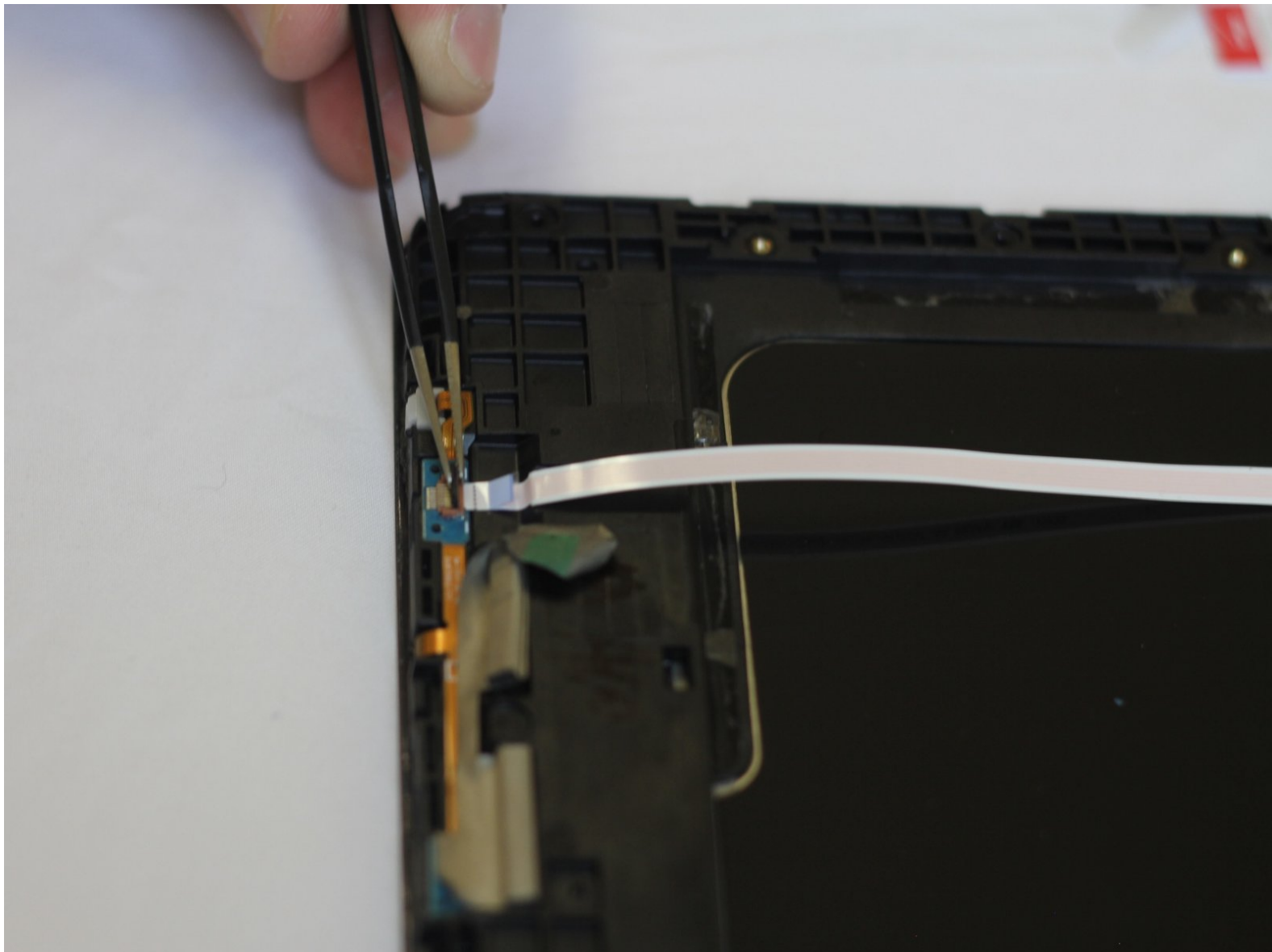




Samsung Galaxy Tab E 9.6 Verizon Home Button Replacement

This guide will show you how to replace your home button if it breaks and isn't working as well as needed.

Written By: William Gorham Jr



INTRODUCTION

This guide will take you through replacing the home button on the Samsung Galaxy Tab E 9.6 Verizon. Before the home button can be accessed and replaced properly, first both the back and front panels must be removed from the device. The guide will outline removing both panels before providing steps to remove a faulty home button.



TOOLS:

- [iFixit Opening Tools](#) (1)
 - [Suction Handle](#) (1)
 - [Tweezers](#) (1)
-

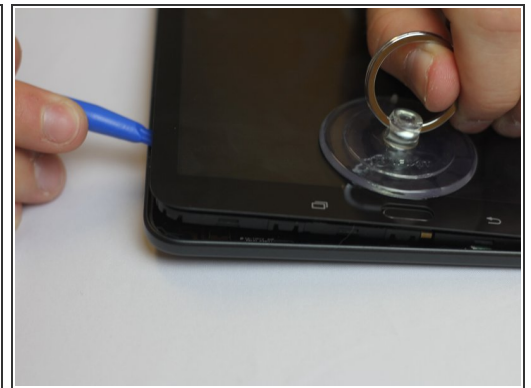
Step 1 — Back Casing



⚠ If the device has a micro-SD or SIM card inserted, remove them from the device before continuing.

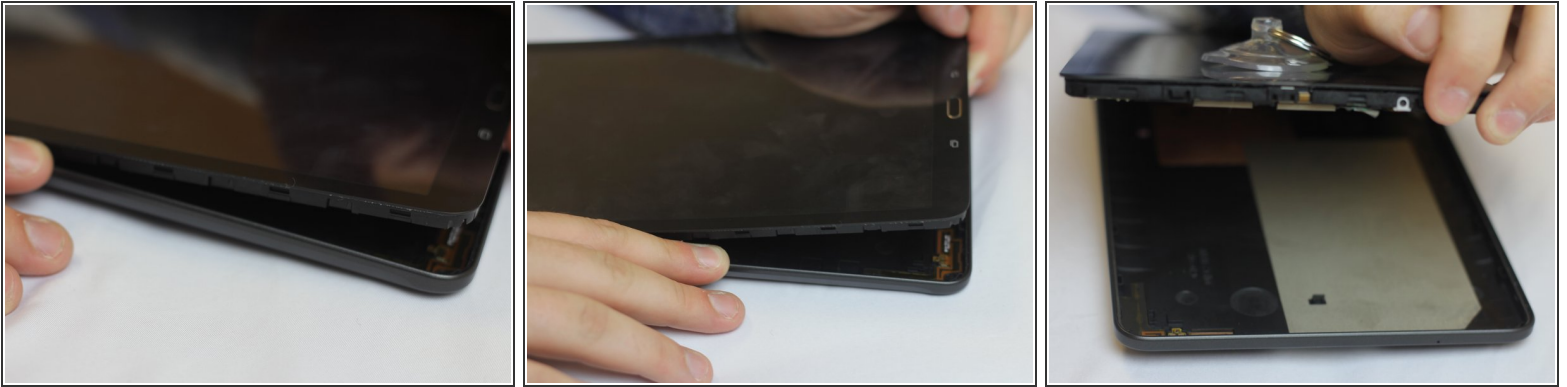
⚠ Verify your device is turned OFF after removing all external peripherals from it. Power down the device if it's turned on.

Step 2



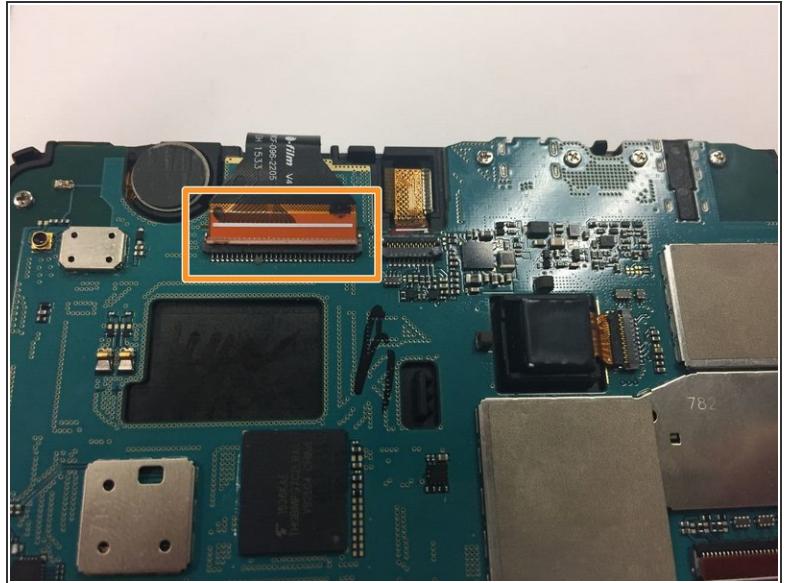
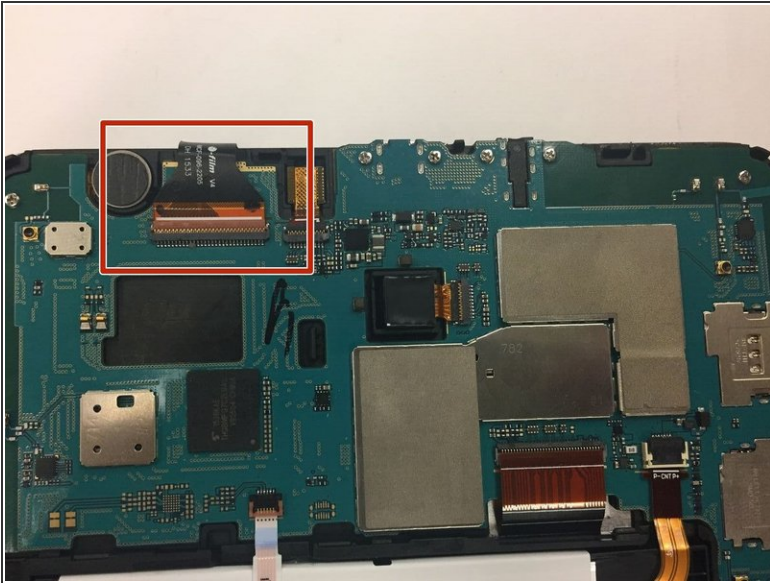
- Insert a plastic opening tool in between the edge of the device's screen and its back cover. Once the tool is wedged between the glass and back casing, move the tool around the edges of the device to undo the plastic clips holding the casing attached.
- ⓘ Inserting the tool and prying off the back casing requires a good deal of force. If you're having trouble undoing the clips, try using a suction cup on the screen to increase separation with the back casing.

Step 3



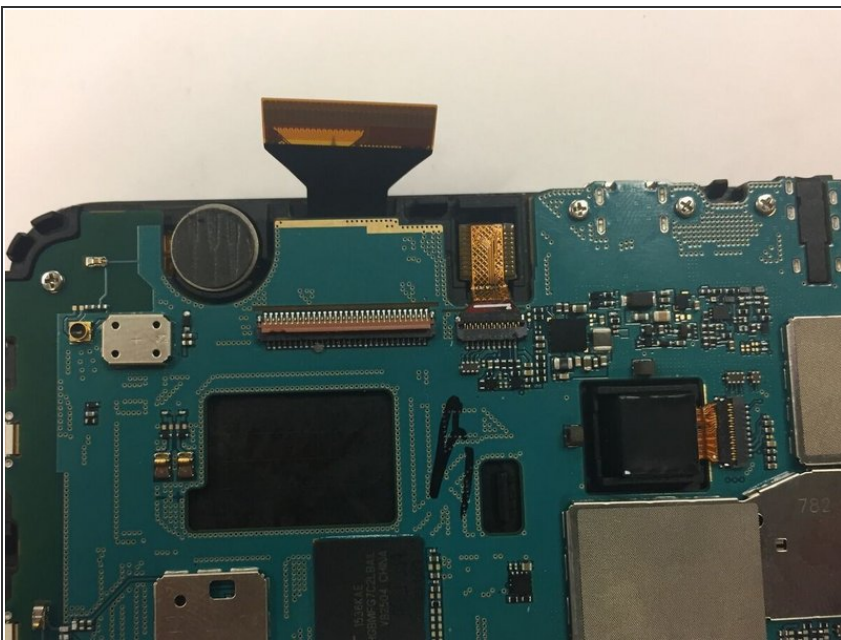
- As more clips are undone, it will become easier to further separate the device from its casing. Once you're able to separate roughly half of the device from the back casing, use your hands to gently pull the back cover off of the device.
- ☞ Don't forget: after creating some separation between the device and back case, you can use a suction cup attached to the screen to aid in pulling the device apart.

Step 4 — Front Panel



- Turn the device over so the screen is facing down. Locate the front panel assembly connector at the top left corner of the motherboard.
- To remove the connector, first use a pair of tweezers and flip the connector lock upwards towards the battery.

Step 5



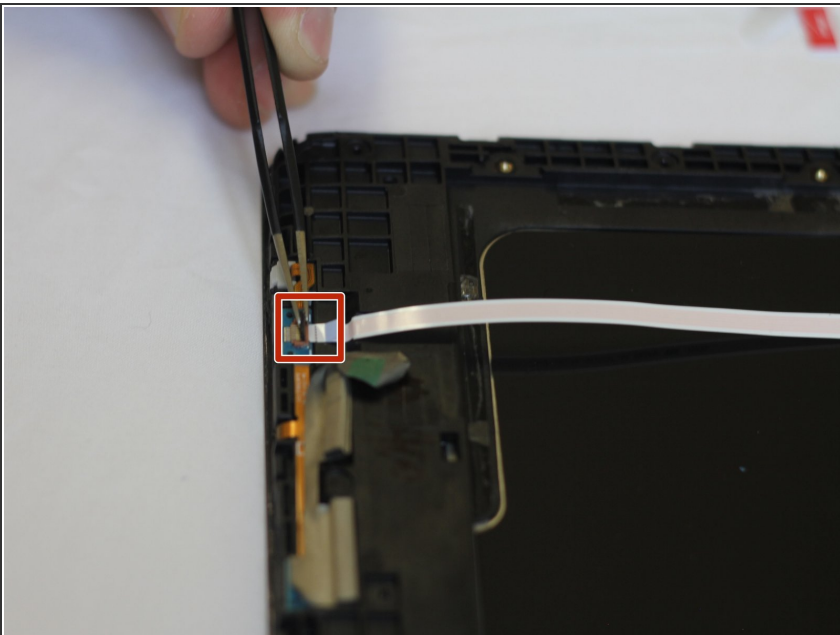
- Once you've undone the connector lock, use a pair of tweezers to pull the cable front its housing.

Step 6



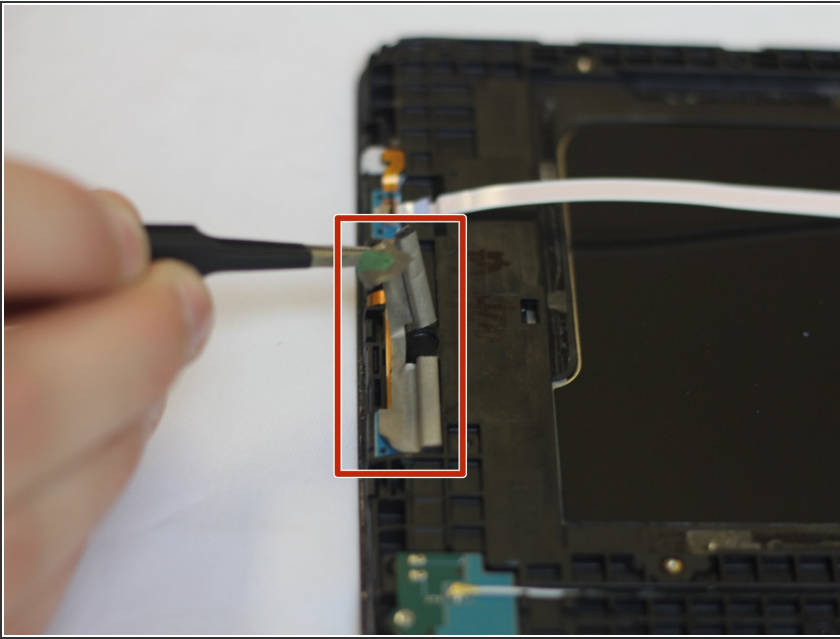
- Turn the device back over and use a plastic opening tool to detach the adhesive glue securing the front casing.
- You will need to wedge a plastic opening tool in between the front casing and the screen. Then move the tool around the perimeter of the device to break the adhesive.
- Once you've loosed the front panel enough with the prying tool, you can use your hands to pull the front panel off of the device.

Step 7 — Home Button



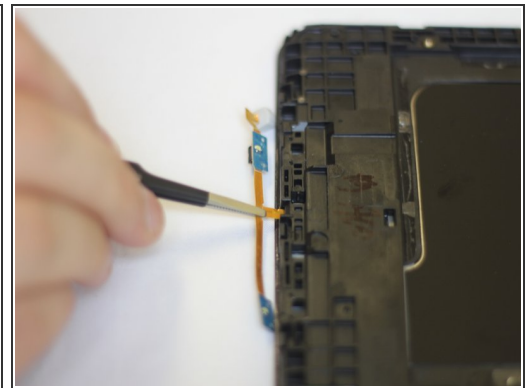
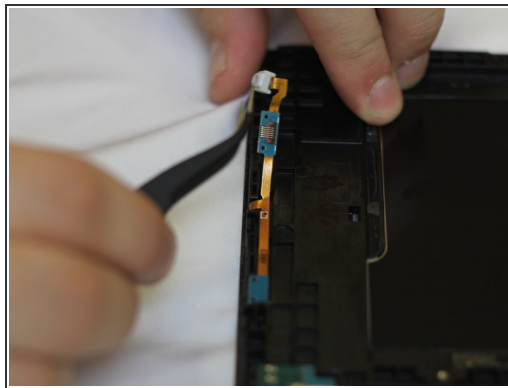
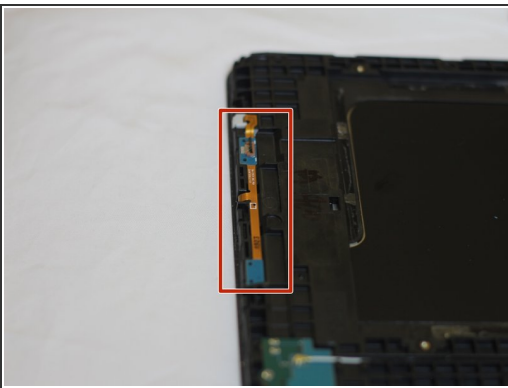
- Before you can remove the home button, you must first remove the ribbon wire connecting across the battery. All you need to remove is the bottom connector, not the top.
- To do this pull the black tab up towards the top of the tablet. Then slide the ribbon wire out.

Step 8



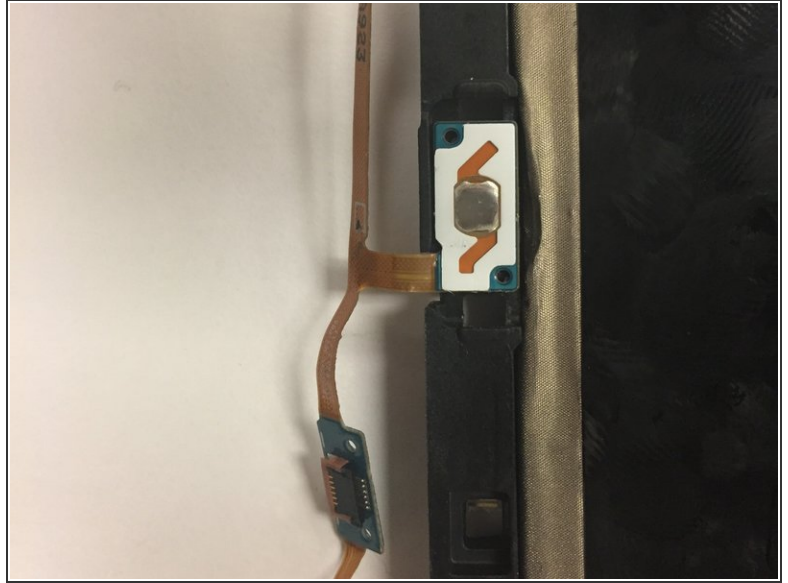
- There is gray padding covering the ribbon wires for the home button. Before you remove the wires you must gently remove the padding using tweezers.

Step 9



- To change the home button you must first locate a strip of ribbon wire on the back bottom of the tablet.
 - Slowly use the tweezers to pull the ribbon wire being careful not rip the wire or damage and parts surrounding the wire.
- ⚠ There is more of the ribbon wire located underneath the home button. Do not try to remove the ribbon wire out before first removing the home button.

Step 10



- Once the ribbon wire is no longer connected to the back you will now flip the tablet over and begin to remove the home button.
- To remove the home button, take metal tweezers and grab the home button. Pull until the home button is removed and the remainder of the ribbon wire is exposed.
- ⓘ If the ribbon wire is what is faulty on your tablet, simply remove the remainder of the ribbon wire and replace with a new one.

To reassemble your device, follow these instructions in reverse order.