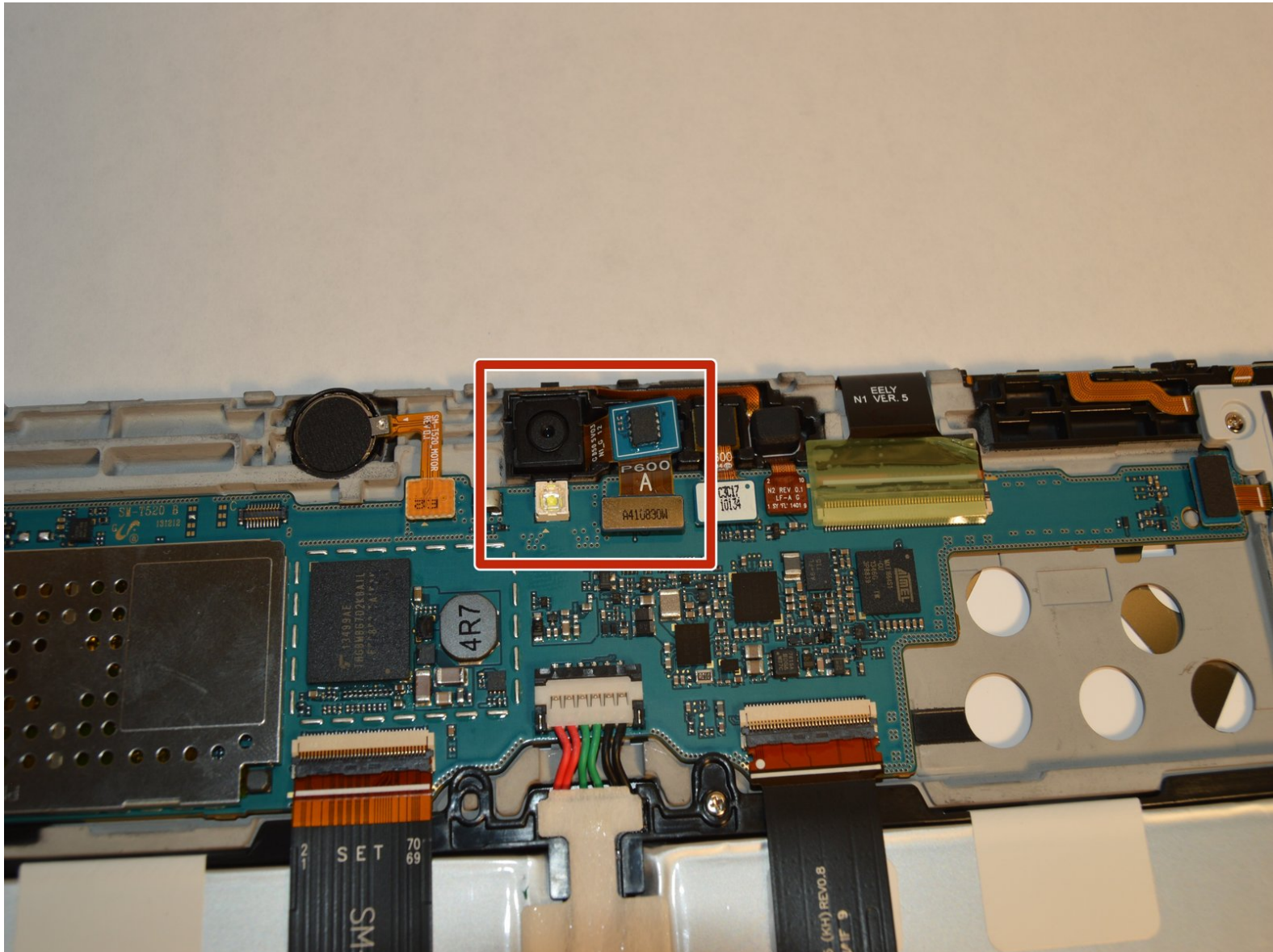




# Samsung Galaxy Tab Pro 10.1 Rear Facing Camera Replacement

Replace the rear facing camera on the Samsung Galaxy Tab Pro 10.1.

Written By: Stephen Yeung



# INTRODUCTION

This guide will show how to replace the rear facing camera on the Samsung Galaxy Tab Pro 10.1.



## TOOLS:

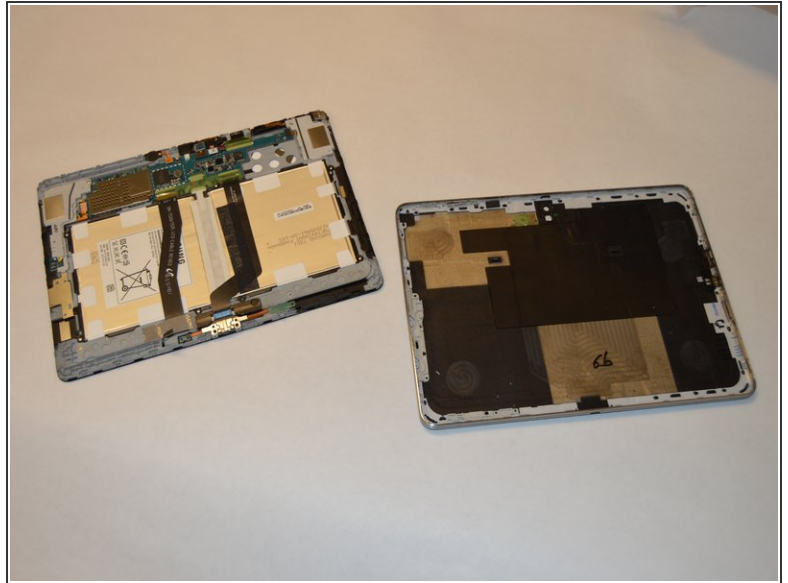
- [Metal Spudger Set](#) (1)
- [iFixit Opening Tools](#) (1)
- [iFixit Precision Bit Driver, Aluminum](#) (1)
- [Phillips #00 Screwdriver](#) (1)
- [Tweezers](#) (1)




## PARTS:

- [Galaxy Tab Pro 10.1 Rear Camera](#) (1)

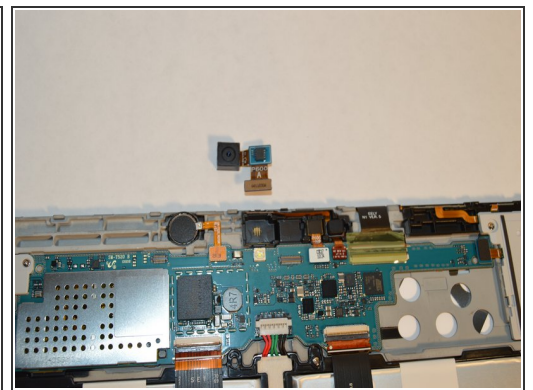
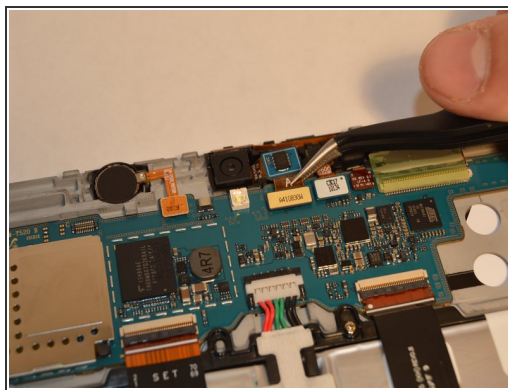
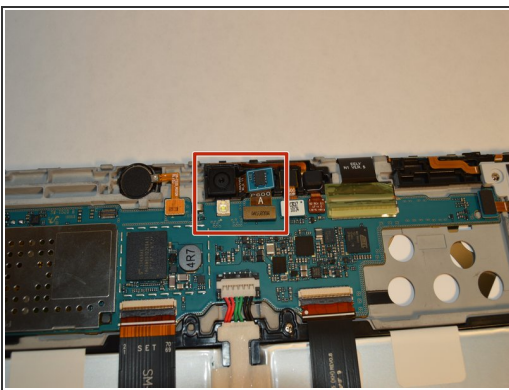
## Step 1 — Rear Panel



 Be gentle, the front panel is connected to sensitive wiring that may snap if too much pressure is applied.

- Insert a plastic opening tool into the crevice between the screen and the side of the tablet.
- Go around the entire crevice with the plastic opening tool.
- Set aside the separated front and rear panels of the device.

## Step 2 — Rear Facing Camera



- Use plastic tweezers and carefully detach the rear-facing camera from the motherboard.

To reassemble your device, follow these instructions in reverse order.