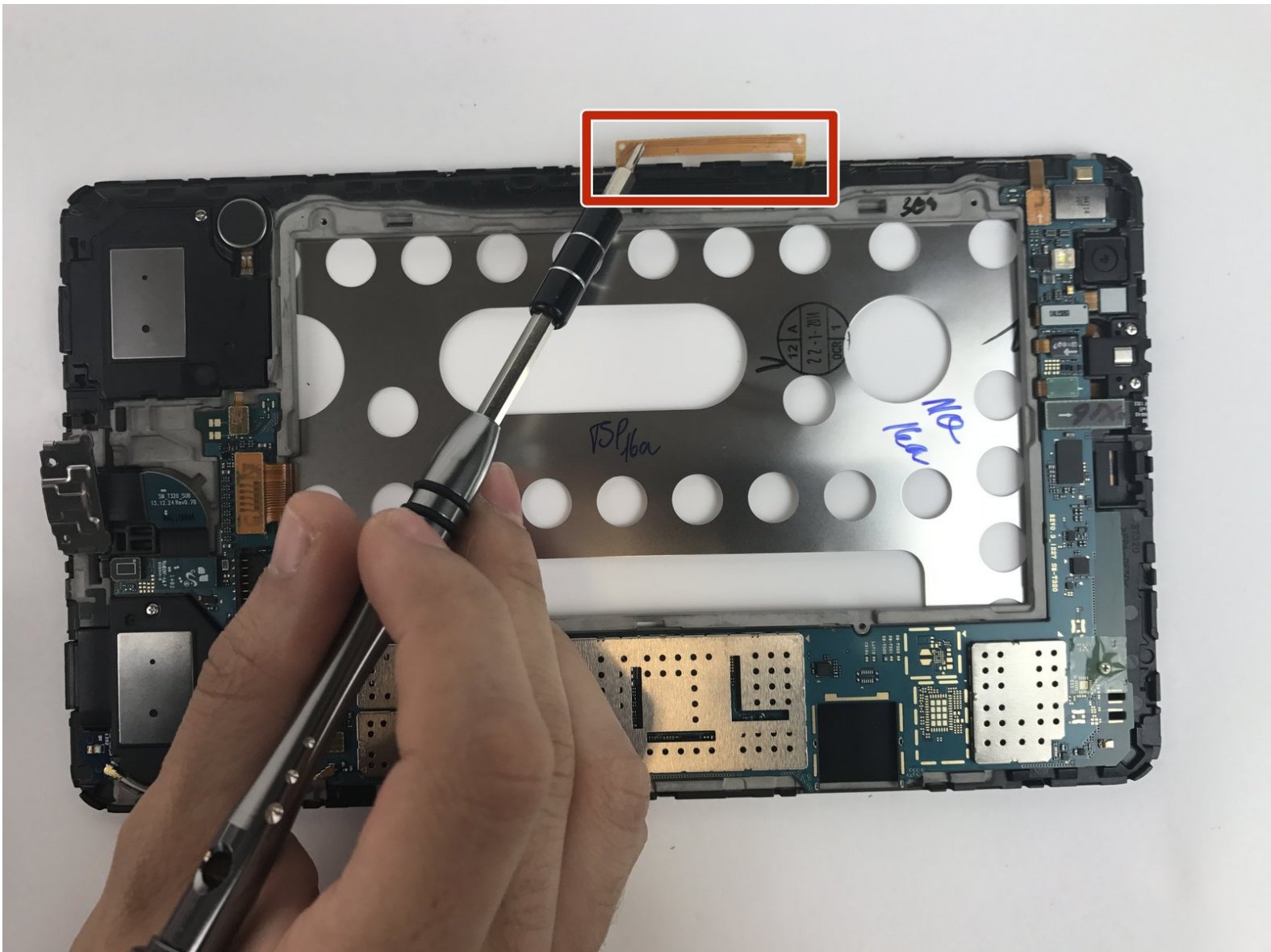




# Samsung Galaxy Tab Pro 8.4 Motherboard Replacement

This guide will demonstrate how to remove the motherboard from within the Samsung Galaxy Tab Pro 8.4 .

Written By: victor johnson



This document was generated on 2019-10-15 05:09:42 AM (MST).



## TOOLS:

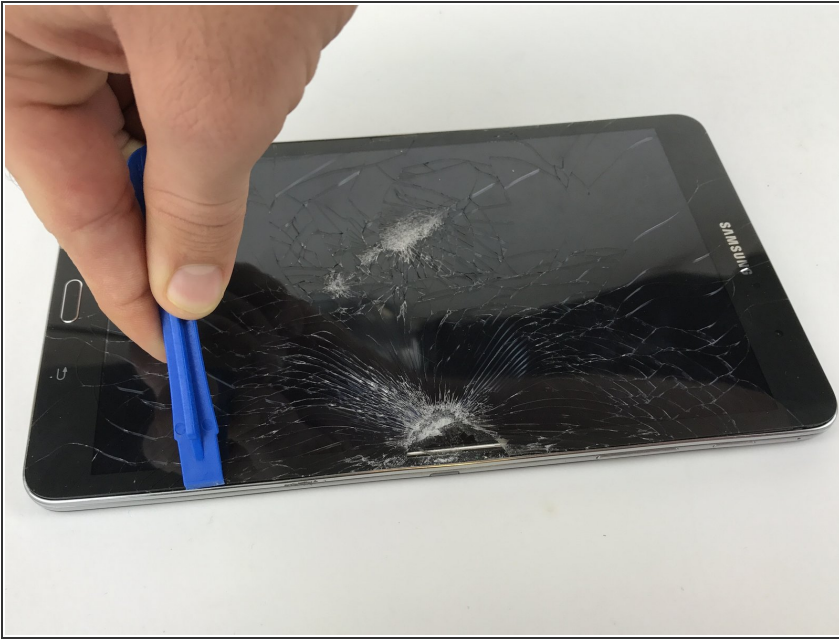
- [iFixit Opening Tools](#) (1)
- [Phillips #000 Screwdriver](#) (1)
- [Spudger](#) (1)



## PARTS:

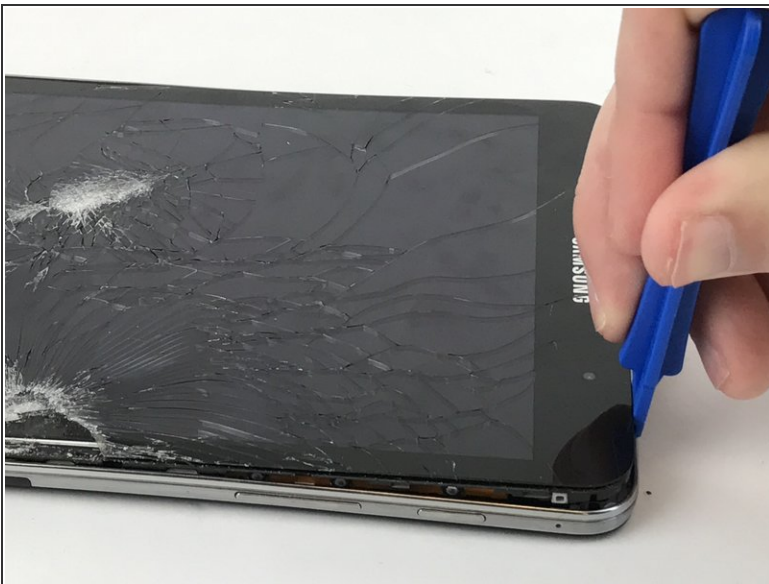
- [Galaxy Tab Pro 8.4" Wi-Fi Motherboard](#) (1)

## Step 1 — Battery



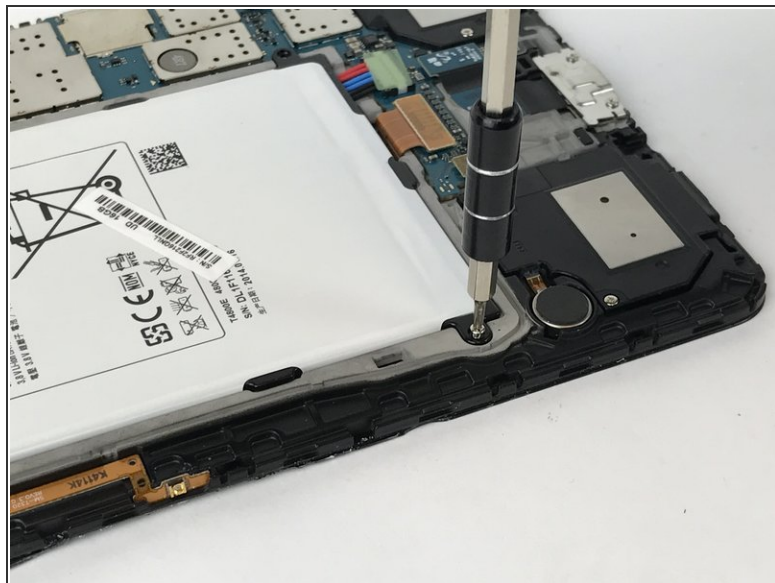
- Begin by separating the back panel from the screen glass assembly using the plastic opening tool.
- Insert the plastic opening tool between the edge of the glass screen and the metal frame around the device.

## Step 2



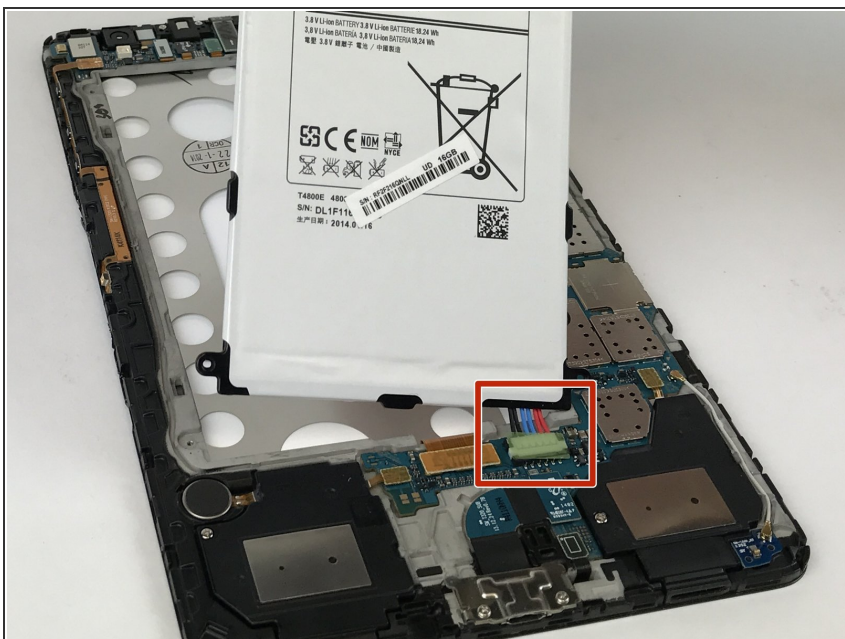
- Continue around the entire device until the back panel is completely separated from the screen.

## Step 3



- Remove the four 2.5mm Phillips #000 screws.

## Step 4



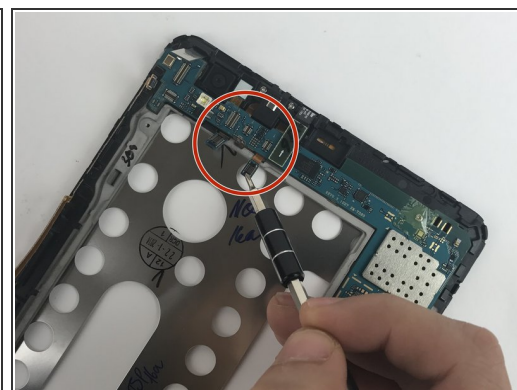
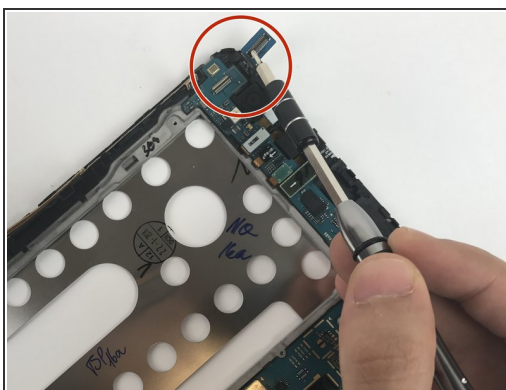
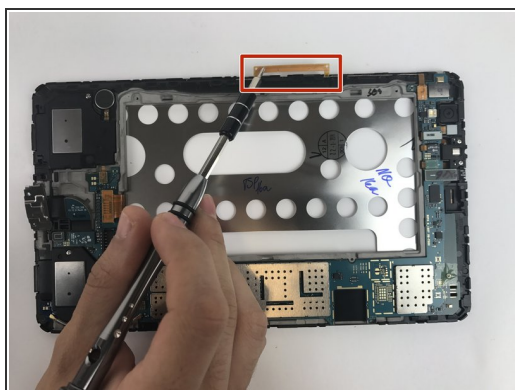
- Gently pull up on the plastic tab that has red, blue and black wires that connects the battery to the motherboard.

## Step 5



- The battery should be completely disconnected and the new one can be installed.

## Step 6 — Motherboard



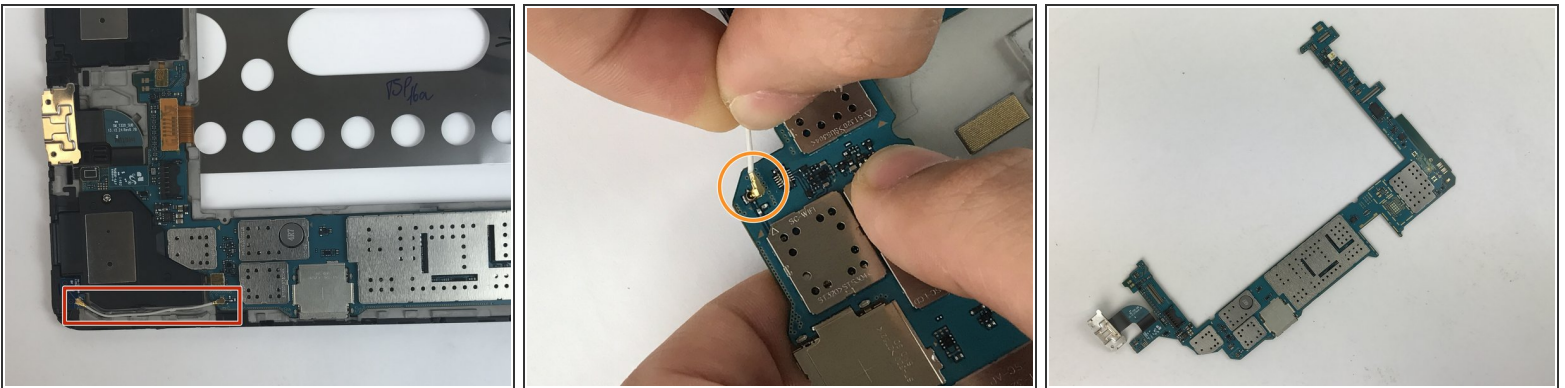
- Remove all the clips that are attached to the motherboard using your fingers or a nylon spudger.

## Step 7



- There are four Phillips head screws (2.5mm) that need to be removed:
- Two on the charging port, which is the small metallic piece at the bottom of the device.
- There is one screw that is covered by a small green tape. The tape must be peeled off before the screw under can be removed.
- The last screw is found on a speaker at the bottom right of the device. Once the screw is removed, the speaker must be removed as well.

## Step 8



- There is a small wire that connects the motherboard to the bottom right corner.
- Gently pull the end of the wire that attaches the motherboard to the device until the wire is disconnected.
- After the cord is disconnected, the motherboard can be removed from the tablet by simply lifting it from the device.

