



# Samsung Galaxy Tab S 8.4 Micro USB Port Replacement

Learn how to replace your Samsung Galaxy Tab S 8.4's charging port.

Written By: Trent Chapman



# INTRODUCTION

If your battery does not charge consistently, or will not charge at all, your charging port may be faulty. If you are experiencing charging difficulties, the charging port may need to be replaced. This guide will show you how to do so.



## TOOLS:

- [Phillips #000 Screwdriver](#) (1)
- [iFixit Opening Tools](#) (1)



## PARTS:

- [Galaxy Tab S 8.4 \(Wi-Fi\) Charging Assembly](#) (1)

## Step 1 — Back Cover



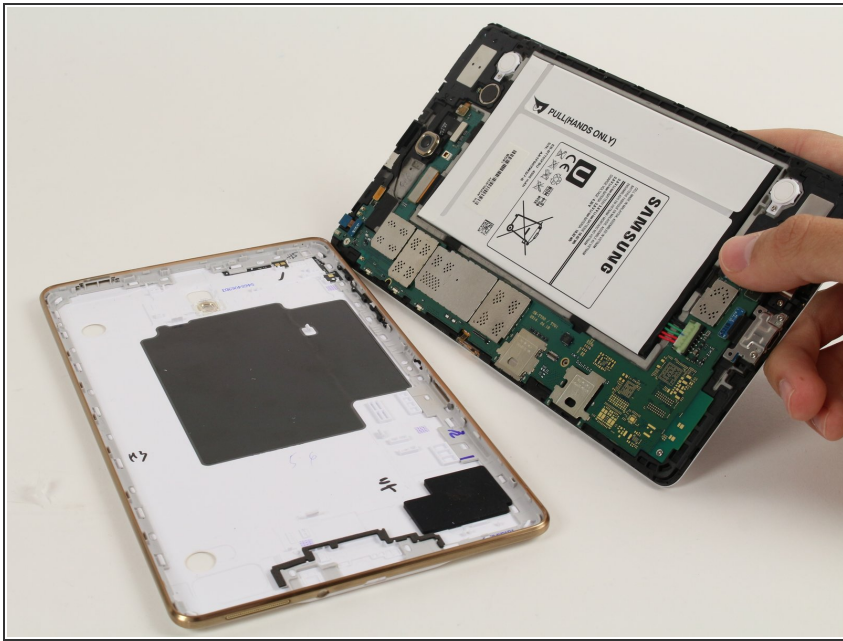
- Place the plastic opening tool between the face of the display and rim of the back cover of the device.
- Move the plastic opening tool in a downward motion until you see separation between the tablet and back cover.

## Step 2



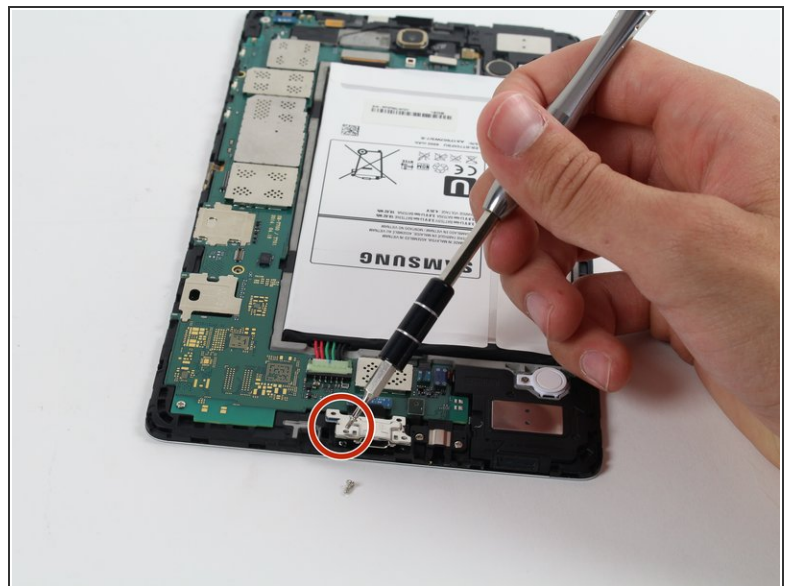
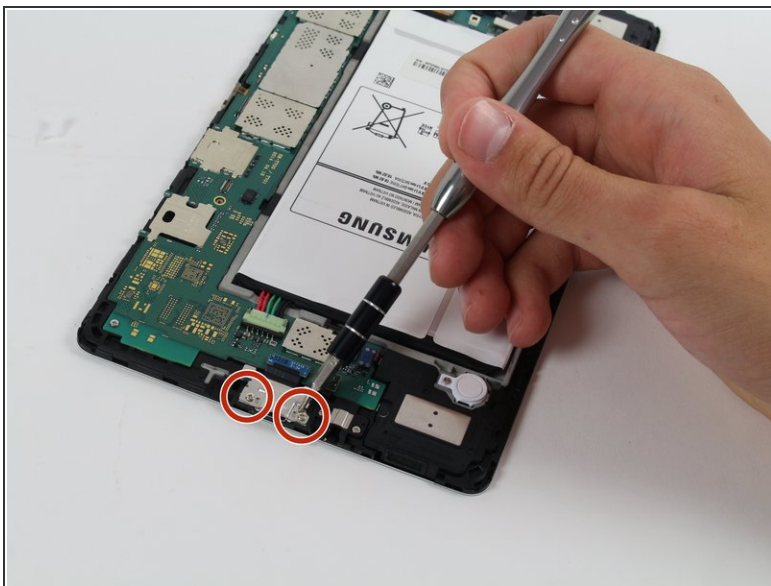
- By sliding the plastic opening tool around the rim of the device, carefully continue to pry apart the screen and back cover.
- ⓘ Try to separate evenly on all sides until the screen detaches from the device backing completely.
- ⓘ If this is the first time removing the back cover, it will be rather difficult to separate it from the tablet.

### Step 3



- Remove the back cover after the entire rim is disconnected.

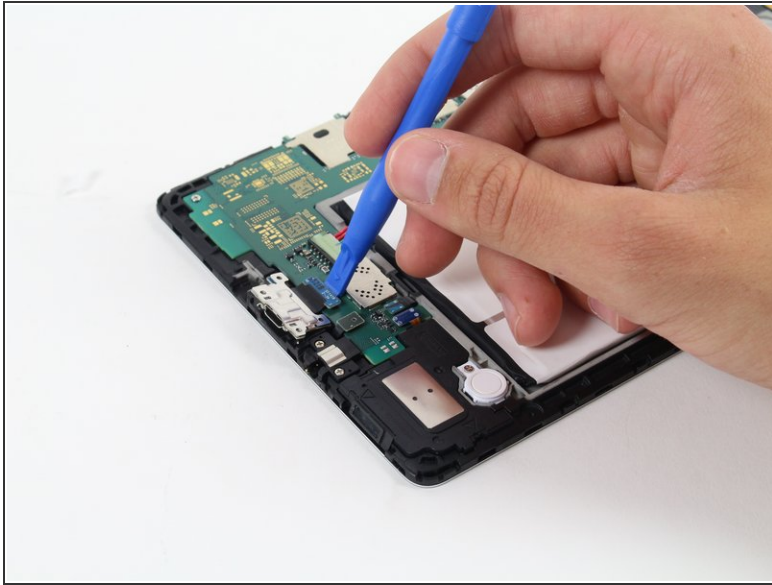
### Step 4 — Micro USB Port



- Remove the two 4 mm Phillips #000 screws securing the micro USB port.



## Step 5



- Using the plastic opening tool, disconnect the charge port from the motherboard.
- Once disconnected, lift to remove the charging port.

To reassemble your device, follow these instructions in reverse order.