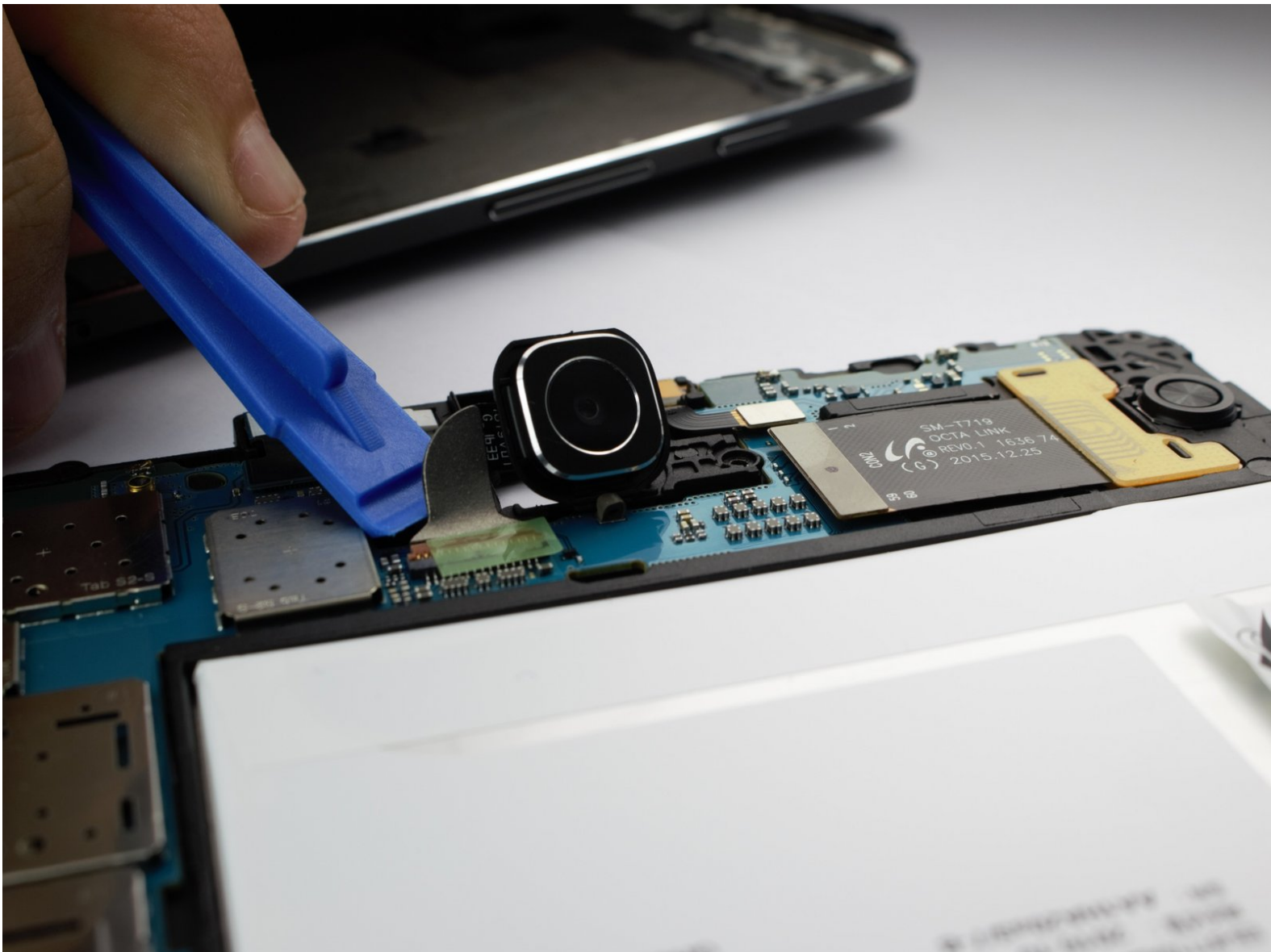




# Samsung Galaxy Tab S2 8.0 Camera Replacement

This guide will direct you through the steps of replacing your camera in your Samsung Galaxy Tab S2 8.0

Written By: Jonathan Wood



This document was generated on 2019-10-16 03:42:11 PM (MST).

## INTRODUCTION

If the tablet is taking blurry pictures or unclear pictures, replacing the camera should solve the problem.



### TOOLS:

- [Suction Handle](#) (1)
- [iFixit iOpener](#) (1)
- [iFixit Opening Picks set of 6](#) (1)
- [iFixit Opening Tools](#) (1)




### PARTS:

- [Samsung Galaxy Tab S2 Rear Camera](#) (1)

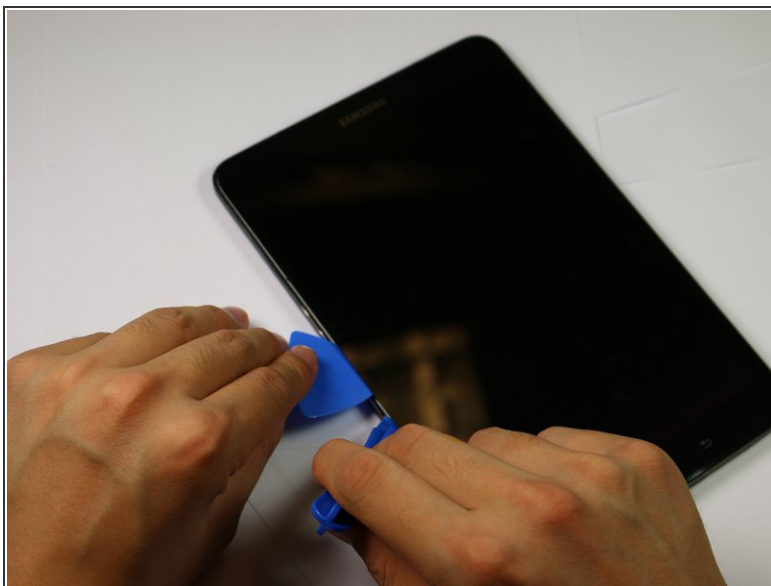
## Step 1 — Screen



 Working on a device that is turned on may yield an electric shock. Make sure your device is turned off before working on it.

- Apply heat using an iFixit iOpener or another heating gun in order to weaken the adhesive around the edges of the screen.

## Step 2




- Insert the plastic opening tool into the gap between the screen and tablet in the location where you want to start removing the screen.
- Put an opening pick in the gap created, in between the screen and the panel.
- Repeat all around device, putting 2 picks on top and bottom, and one on each side.

This document was generated on 2019-10-16 03:42:11 PM (MST).

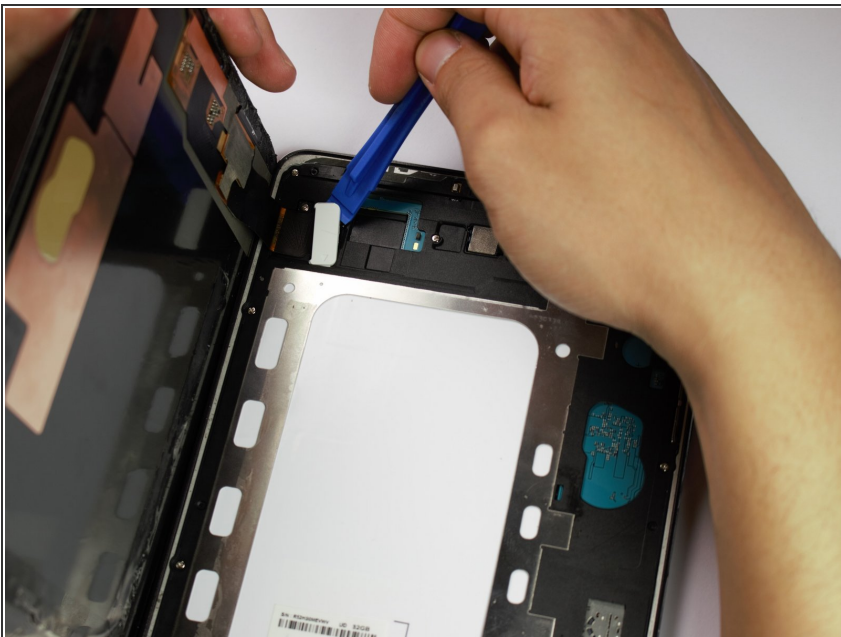
### Step 3




- Carefully remove the small suction cup from the corner without moving the screen.
- Place the small suction cup in the center of the screen and lift to remove screen.

 The screen is still connected to the rest of the device by a cable, so don't pull the screen up too quickly.

### Step 4



- Place the plastic opening tool underneath the ribbon cable connecting the screen to the tablet.
- Carefully lift the plastic opening tool to detach the ribbon from the tablet.

 Make sure to discharge any static electricity by touching a grounded metal object, like a quarter, before touching the inside of the device.

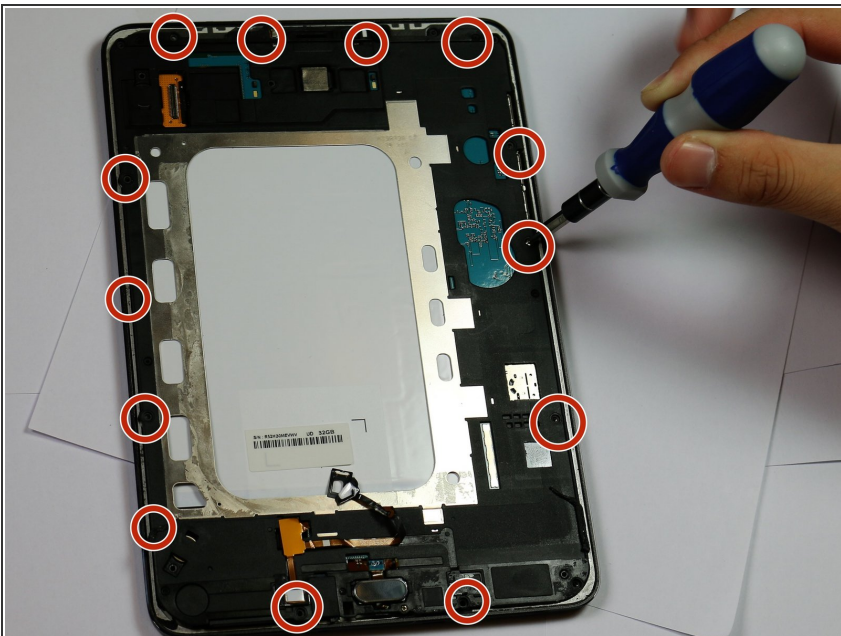


## Step 5



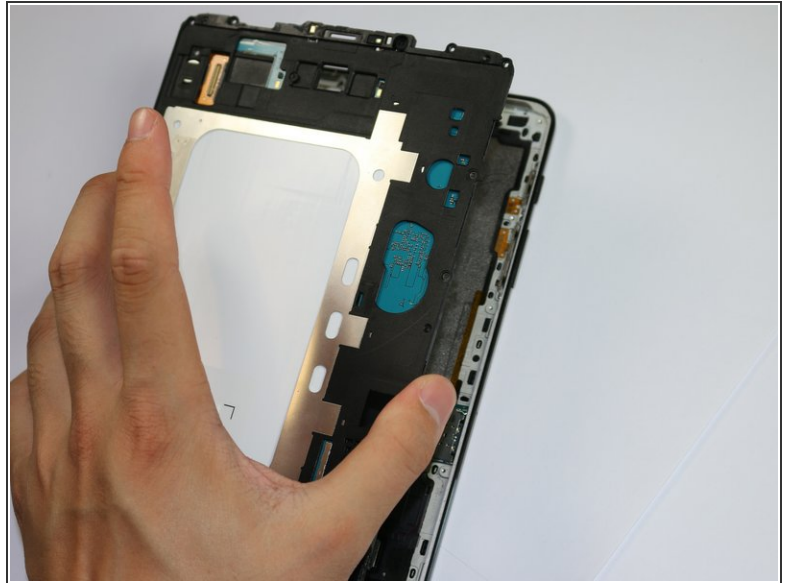
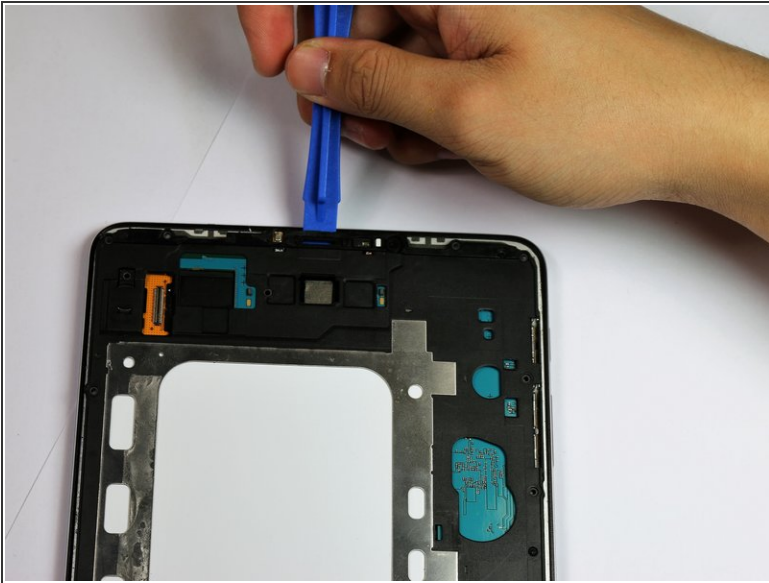
- The screen is now detached from the rest of the tablet.

## Step 6 — Camera



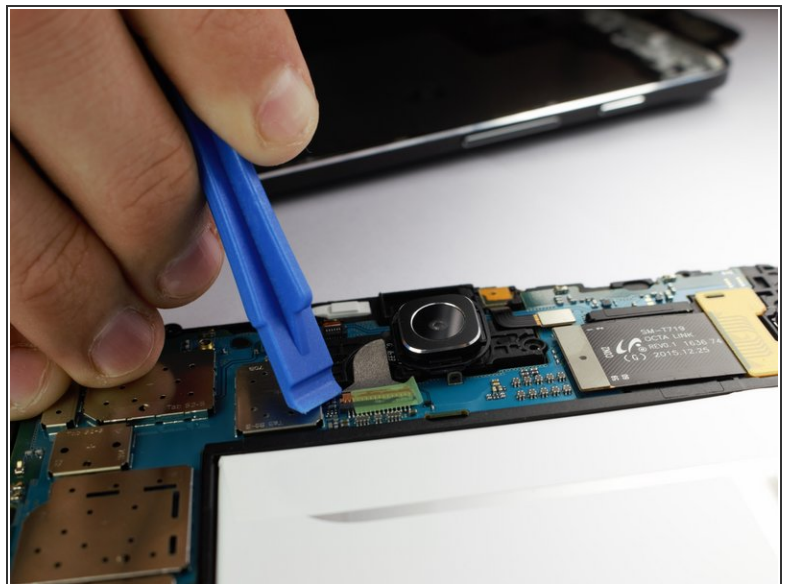
- Remove the 13 3mm screws from around the edges of the board using a Phillips #1 screwdriver head.

## Step 7



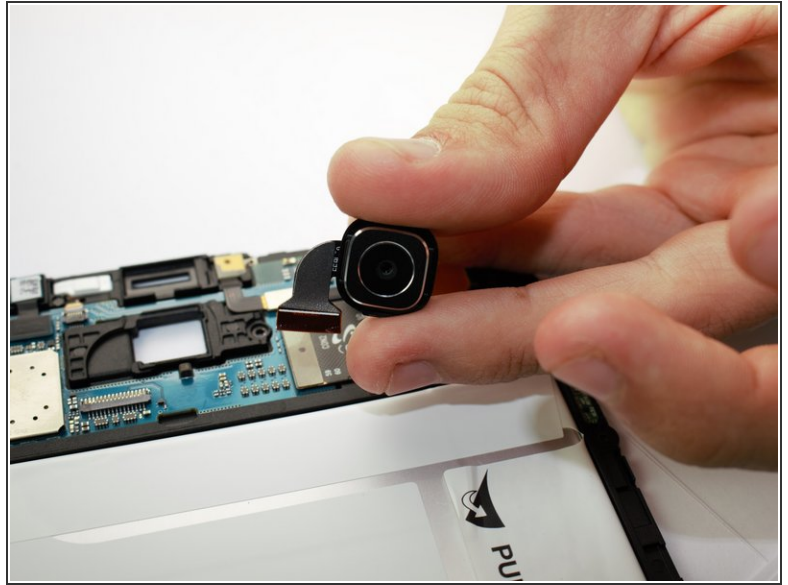
- Use the plastic opening tool to lift and remove the plastic motherboard cover.

## Step 8



- Use the plastic opening tool to detach the camera's ribbon from the motherboard.

## Step 9



- Carefully remove the camera from the motherboard.

To reassemble your device, follow these instructions in reverse order.