



Samsung Galaxy Tab S2 8.0 Home Button Replacement

This guide will direct you through the steps of replacing your home button.

Written By: Jonathan Wood



INTRODUCTION

If your home button is not working or is sticking, replacing it will fix these problems.




TOOLS:

- [Suction Handle](#) (1)
 - [iFixit Opening Tools](#) (1)
 - [iFixit iOpener](#) (1)
 - [iFixit Opening Picks set of 6](#) (1)
-

Step 1 — Screen



 Working on a device that is turned on may yield an electric shock. Make sure your device is turned off before working on it.

- Apply heat using an iFixit iOpener or another heating gun in order to weaken the adhesive around the edges of the screen.

Step 2




- Insert the plastic opening tool into the gap between the screen and tablet in the location where you want to start removing the screen.
- Put an opening pick in the gap created, in between the screen and the panel.
- Repeat all around device, putting 2 picks on top and bottom, and one on each side.

This document was generated on 2019-10-18 06:45:06 AM (MST).

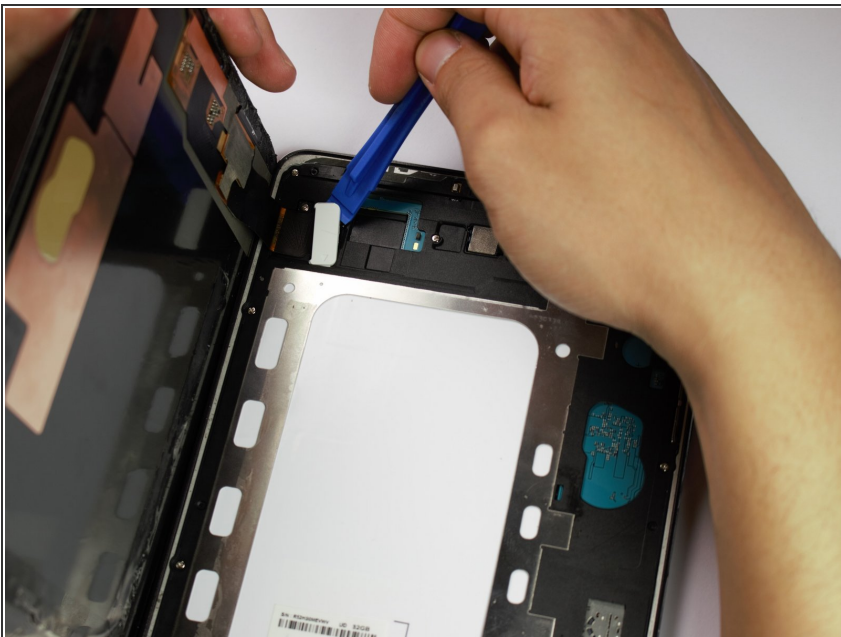
Step 3




- Carefully remove the small suction cup from the corner without moving the screen.
- Place the small suction cup in the center of the screen and lift to remove screen.

 The screen is still connected to the rest of the device by a cable, so don't pull the screen up too quickly.

Step 4



- Place the plastic opening tool underneath the ribbon cable connecting the screen to the tablet.
- Carefully lift the plastic opening tool to detach the ribbon from the tablet.

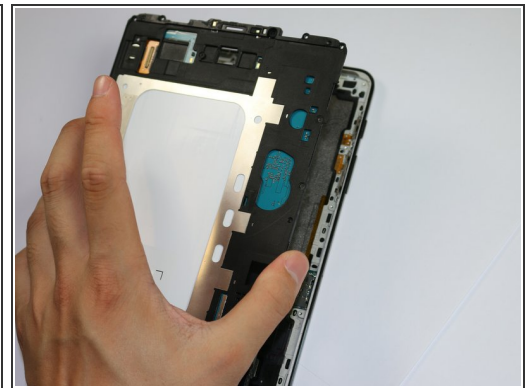
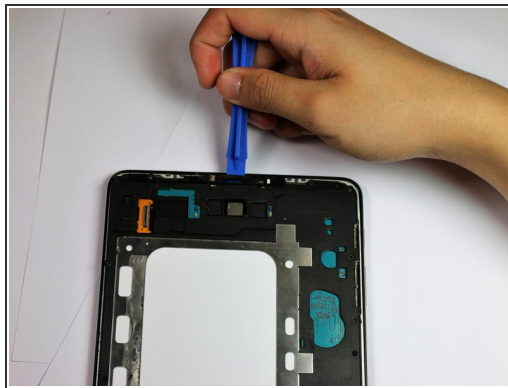
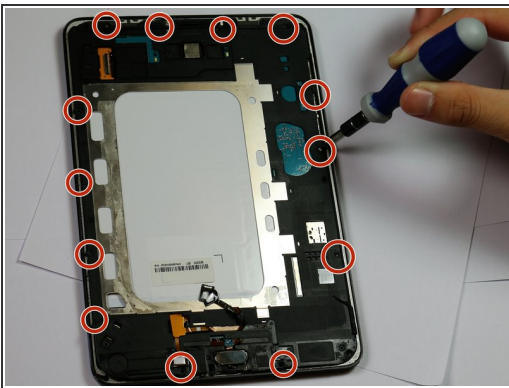
 Make sure to discharge any static electricity by touching a grounded metal object, like a quarter, before touching the inside of the device.

Step 5



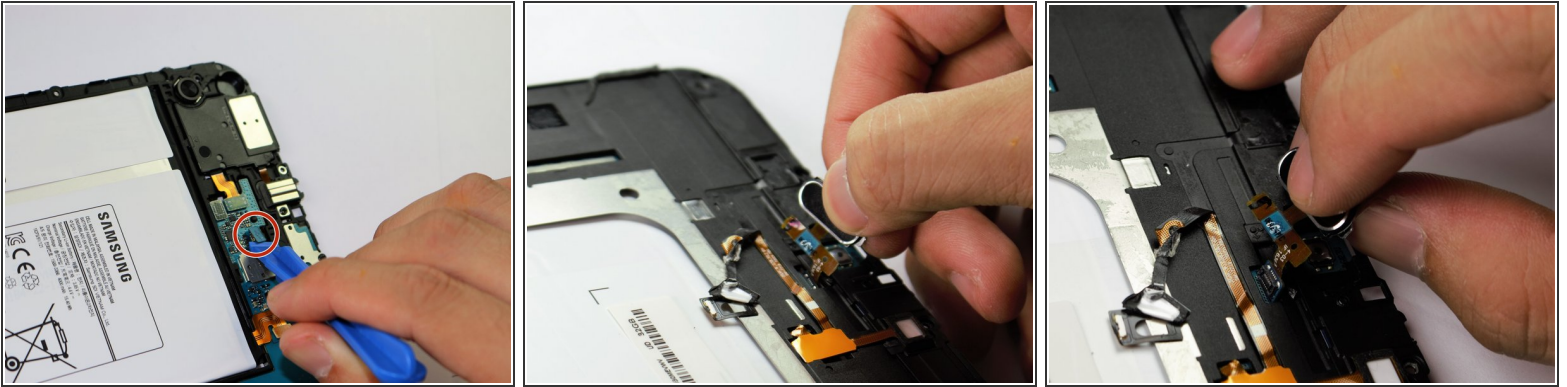
- The screen is now detached from the rest of the tablet.

Step 6 — Home Button



- Remove the 13 3mm screws from around the edges of the board using a Phillips #1 screwdriver head.
- Lift up and remove the panel of the board using a plastic opening tool.

Step 7



- Use a plastic opener tool to remove blue connector underneath the home button.
- Remove the home button by carefully lifting it and pulling the attached cables through the panel.

To reassemble your device, follow these instructions in reverse order.