



Samsung Galaxy Tab S2 9.7 AT&T Camera Replacement

Replace your broken rear-facing camera and/or your broken front-facing camera on your tablet.

Written By: Joy Harris



INTRODUCTION

A broken camera can cause poor photo quality or may not be able to take any photos at all.



TOOLS:

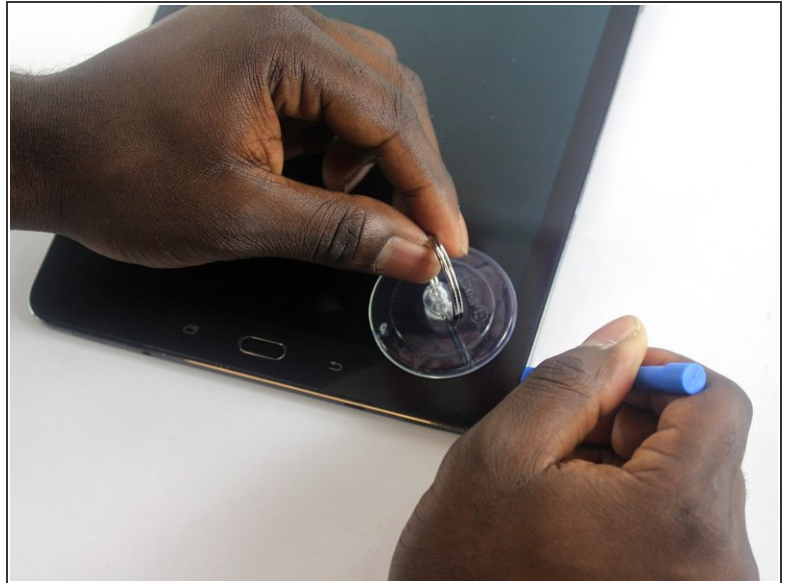
- [Phillips #000 Screwdriver](#) (1)
 - [iOpener](#) (1)
 - [Magnetic Project Mat](#) (1)
 - [Suction Handle](#) (1)
 - [iFixit Opening Tools](#) (1)
 - [Heat Gun](#) (1)
 - [Precision Tweezers Set](#) (1)
-

Step 1 — Screen



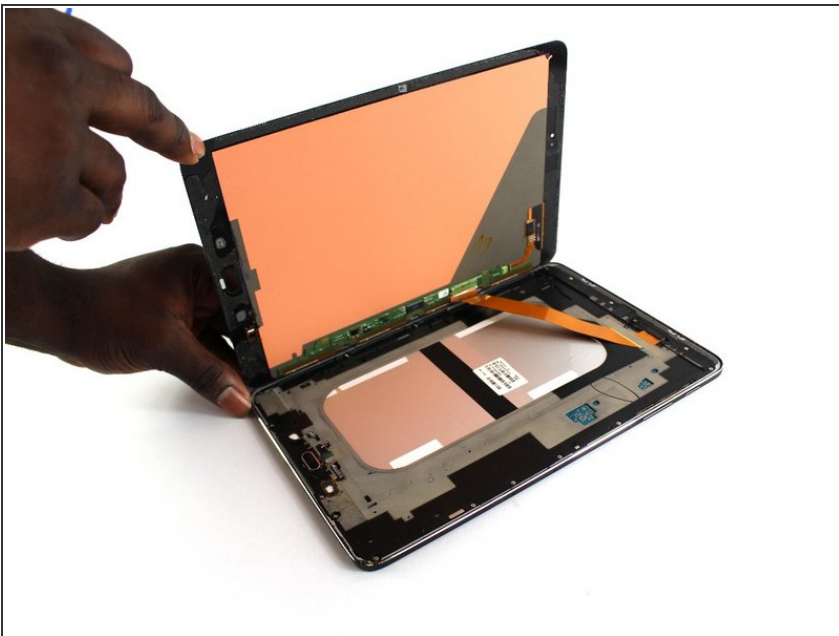
- Apply the heat gun around the edges of the tablet to melt the adhesive glue.
- ⓘ Do not allow the gun to remain still for more than two seconds, so that you do not melt the plastic around the screen.
- ⓘ If you do not have access to a heat gun, you may also use an iOpener or a hair dryer. Refer to the [iOpener guide](#) for extra help.

Step 2



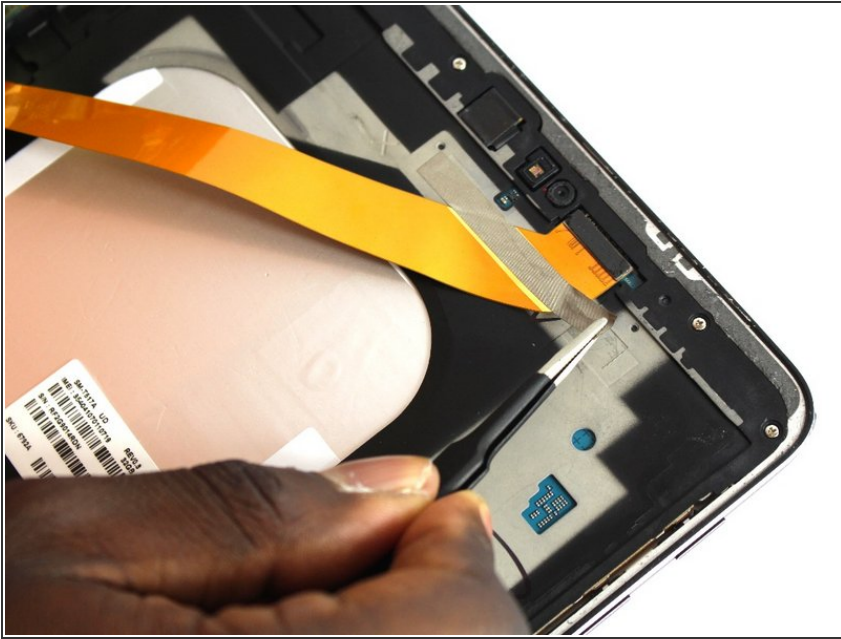
- Apply the suction to the bottom or top right corner.
- Use the plastic opening tool at several points around the screen while the suction is being applied to pop the screen out.

Step 3



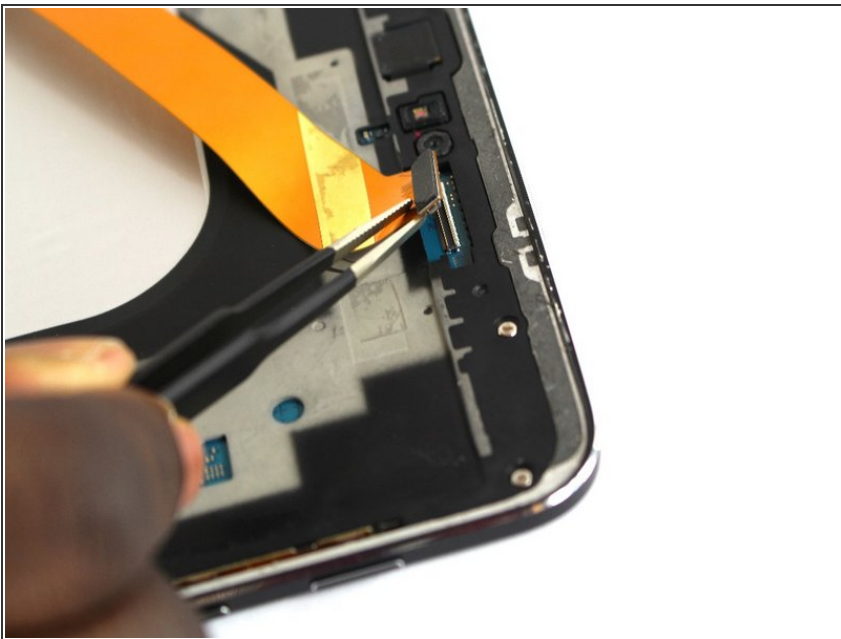
- Once the screen is detached, open the tablet like a book.
- ⚠ Gently open the tablet, and do not pull the pieces apart since you can risk damaging the orange ribbon cable.

Step 4



- Using the precision tweezers, remove the silver tape that is holding the orange ribbon cable connecting the two pieces.

Step 5



- Using the precision tweezers, remove the small press-fit connector from the body of the tablet.

Step 6 — Screws



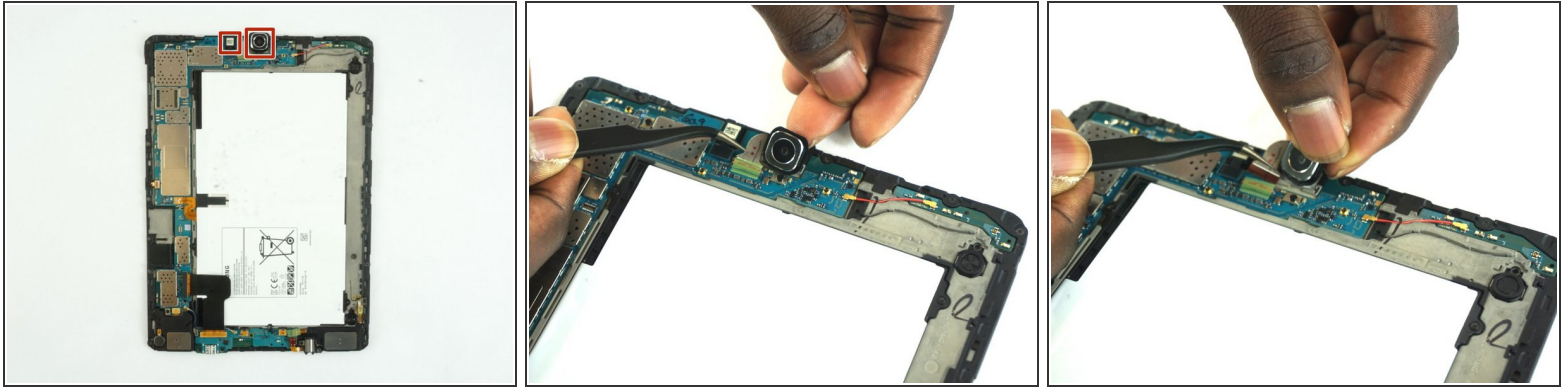
- Using the Philips #000 screwdriver, remove the seventeen 2.74 mm screws around the edges.
- Remove the two 2.74 mm black screws in the middle of the tablet with the Philips #000 screwdriver.
- ⓘ Put the screws on a magnetic project mat or in a container so that you do not lose them.

Step 7



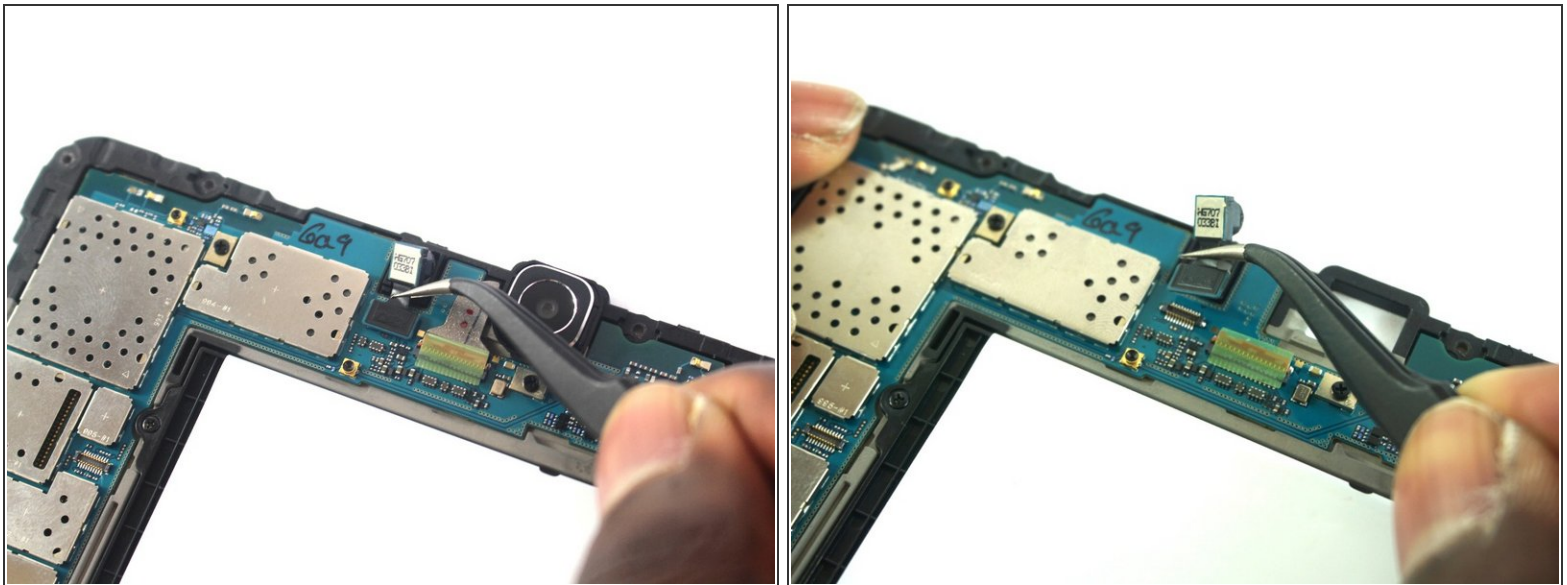
- Take the plastic opening tool around the tablet to remove the motherboard from the device.

Step 8 — Camera



- Locate the two cameras at the top of the motherboard.
- To remove the bigger, back-facing camera, use the precision tweezers to slide the silver ribbon cable out of the ZIF connector.

Step 9



- To remove the smaller, front-facing camera, use the precision tweezers to disconnect the press-fit connector.
- Carefully detach the camera using the precision tweezers.

To reassemble your device, follow these instructions in reverse order.