



Samsung Galaxy Tab S2 9.7 SM-T813 Rear Camera Replacement

How to replace a Samsung Galaxy Tab S2 9.7 SM-T813 rear camera.

Written By: Nash Elder



INTRODUCTION

This replacement requires screen and central panel removal. Note that the connector between the camera and the motherboard flips up for removal.

TOOLS:

- [JIS #00 Screwdriver](#) (1)
- [Phillips #0 Screwdriver](#) (1)
- [iOpener](#) (1)
- [Suction Handle](#) (1)
- [iFixit Opening Picks set of 6](#) (1)

A set of 6 picks will suffice, but more picks will make removing the screen easier.

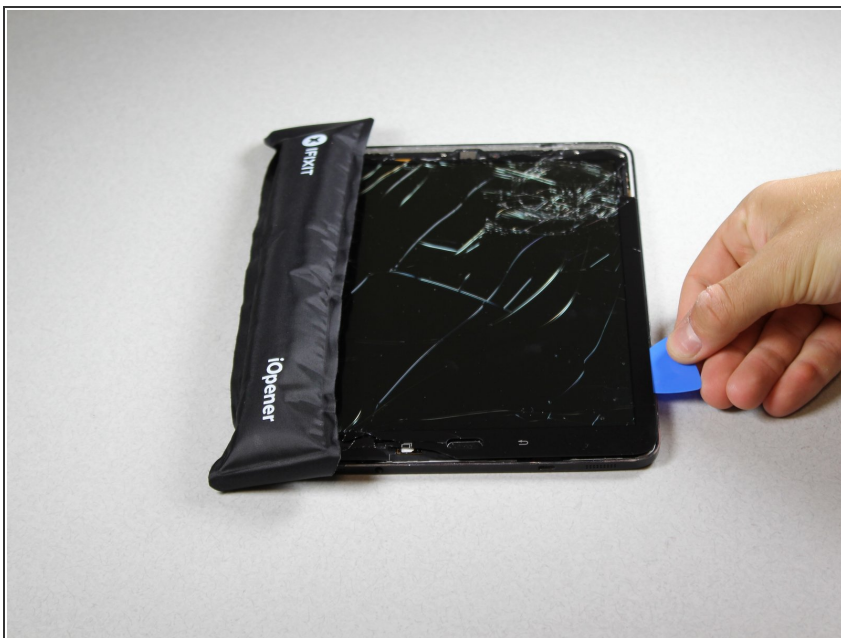
- [iFixit Opening Tools](#) (1)
 - [Tweezers](#) (1)
 - [Spudger](#) (1)
-

Step 1 — Screen



- Heat the iOpeners in a microwave for 1-2 minutes.
- ⚠ The iOpeners will be hot. Use caution and hold the tabs on the ends.
- Place heated iOpeners on screen edges to heat the adhesive.
- ⓘ For more detailed instructions on how to use the iOpeners, please refer to the [iOpener Instructions](#).

Step 2



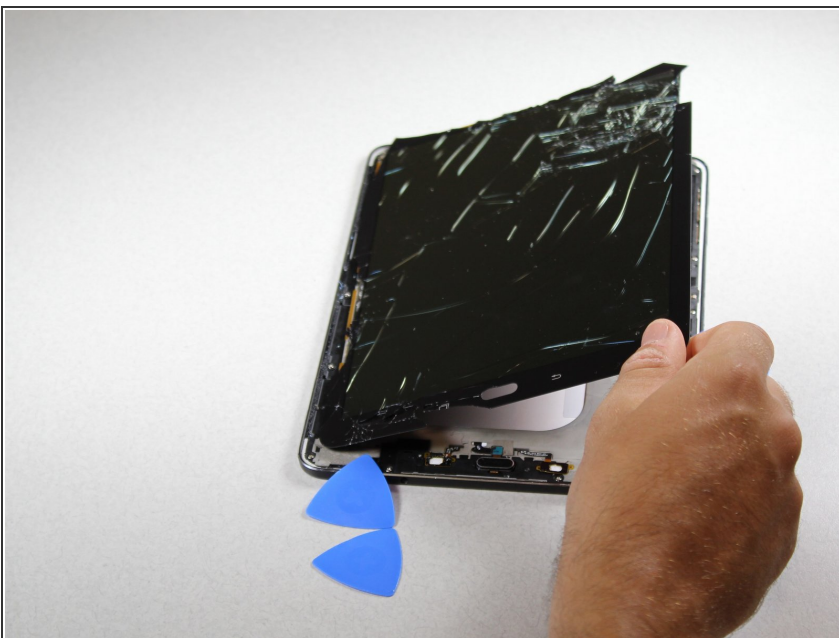
- Separate the screen assembly from the back by wedging the picks between the two components.
- Slide the picks along the edge and leave them holding the device open all around the edges.

Step 3



- Place suctioning device near the corner of the screen and gently lift up to create a gap between the front panel assembly and the back.
- Insert the picks to hold the two components apart once a gap is created.

Step 4



- Once all edges have been disconnected, carefully lift the screen off by pulling one side up.
- ⚠ Be careful not to cut yourself. Any broken glass from the screen will be sharp.

Step 5



- Using the tweezers, gently peel up on the silver tape covering the connector.

Step 6



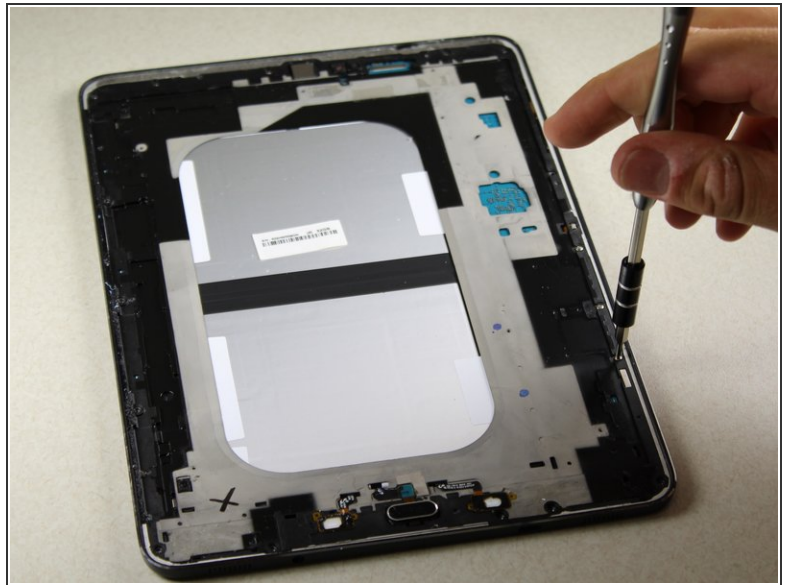
- Use the plastic opening tool to get under the connector piece. This will allow you to remove the front panel assembly from the rest of the device.

Step 7




- Detach the connector from the inside of the device.
- Lift the screen to separate the front panel assembly from the rest of the device.

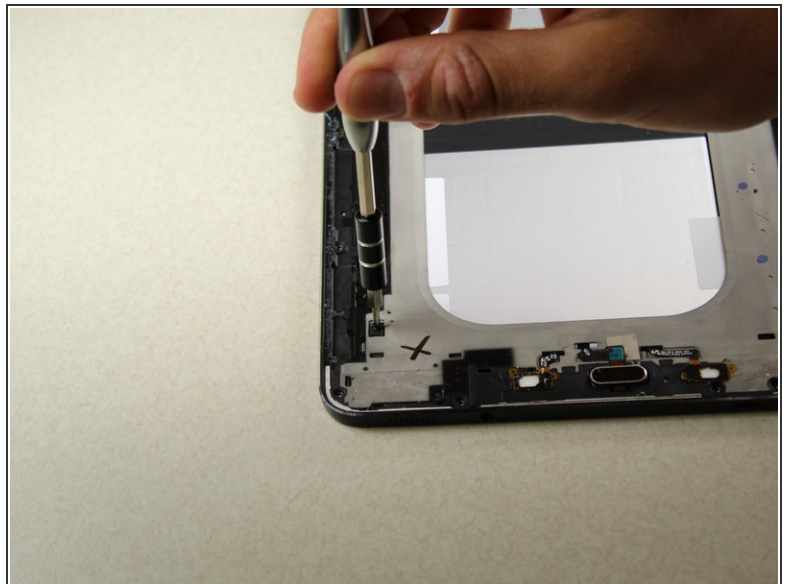
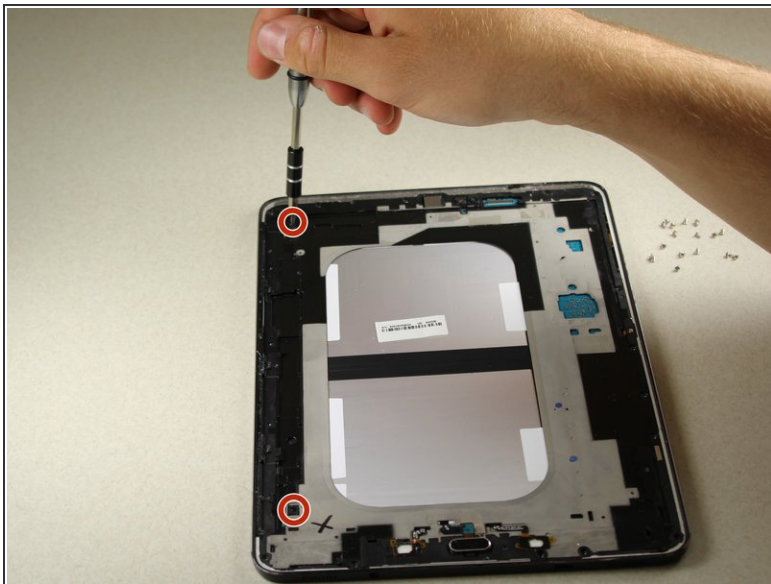
Step 8 — Central Panel



- Remove the 17 silver 3.0 mm Phillips head screws located around the edge of the device using the screwdriver.

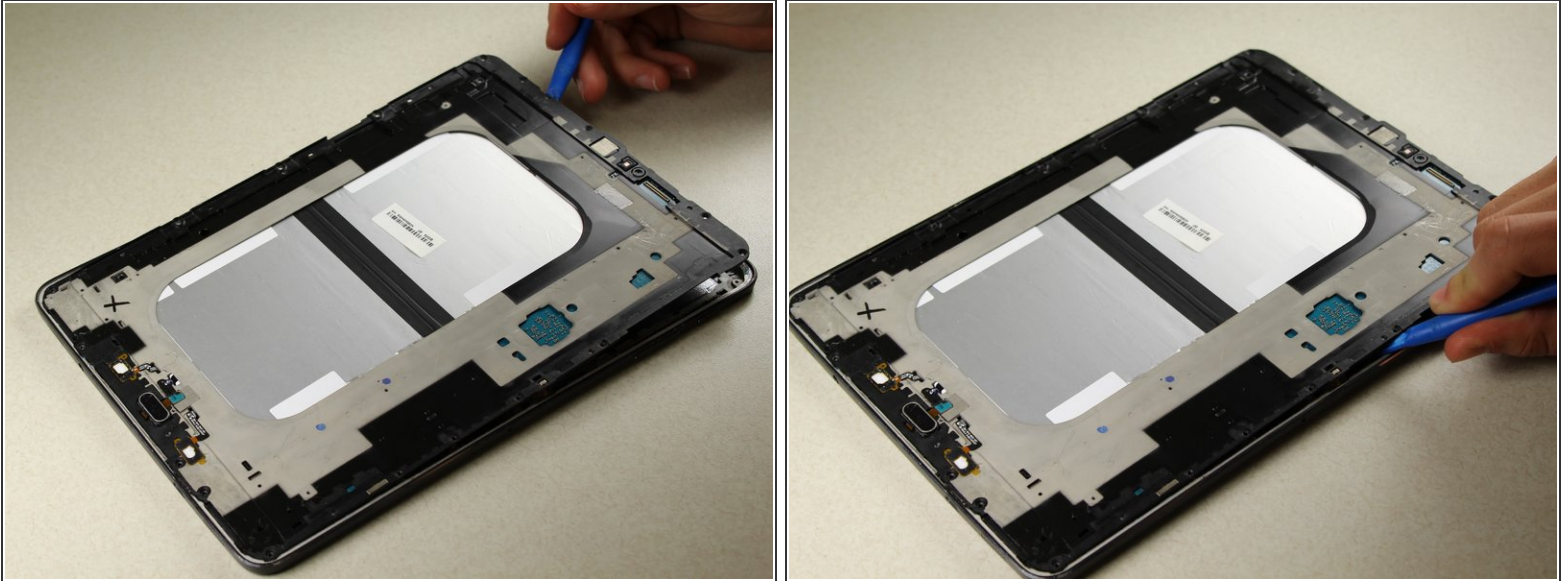
 For additional information on how to remove screws, please refer to [Screwdriver Best Practices](#).

Step 9



- Remove the 2 centrally-located black 3.0 mm Phillips head screws using the screwdriver.

Step 10



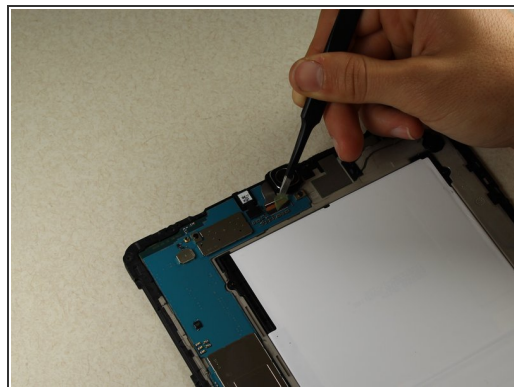
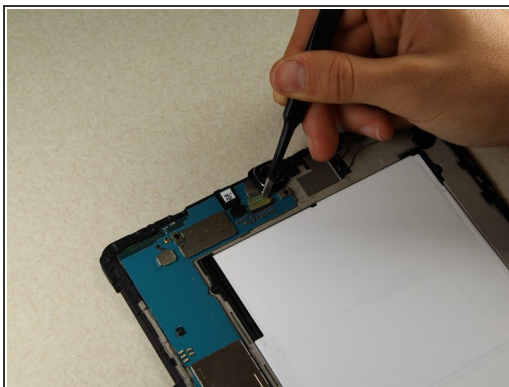
- Use the plastic opening tools to gently separate the middle panel from the rest of the device.
- Move the tool around under the edges until you can remove the panel by hand.
- ⓘ Popping/cracking noises are completely normal. These are the sounds of the panel separating from the rest of the device.

Step 11



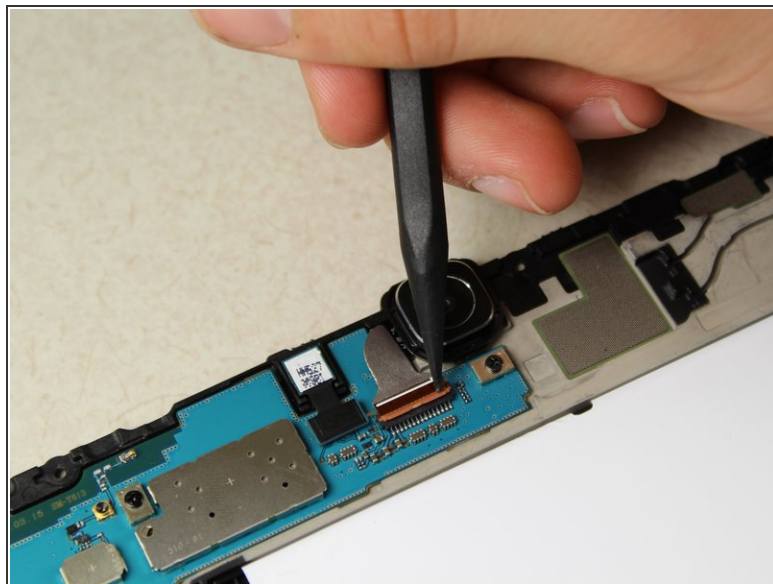
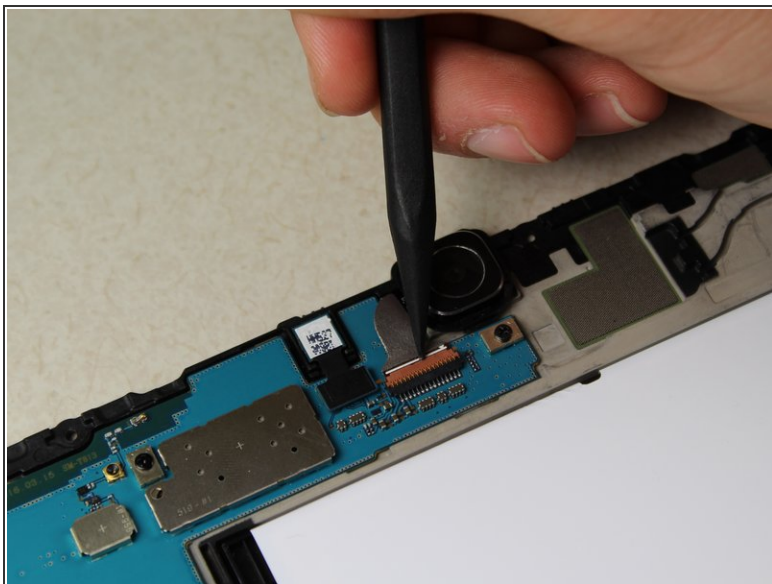
- Lift up the central panel starting from one corner to separate it from the rest of the device.
- Pull towards the top of the device as you lift out to ensure that the charging port connection is not damaged.

Step 12 — Rear Camera




- Using the tweezers, remove the green protective film from the connector between the rear camera and the motherboard.

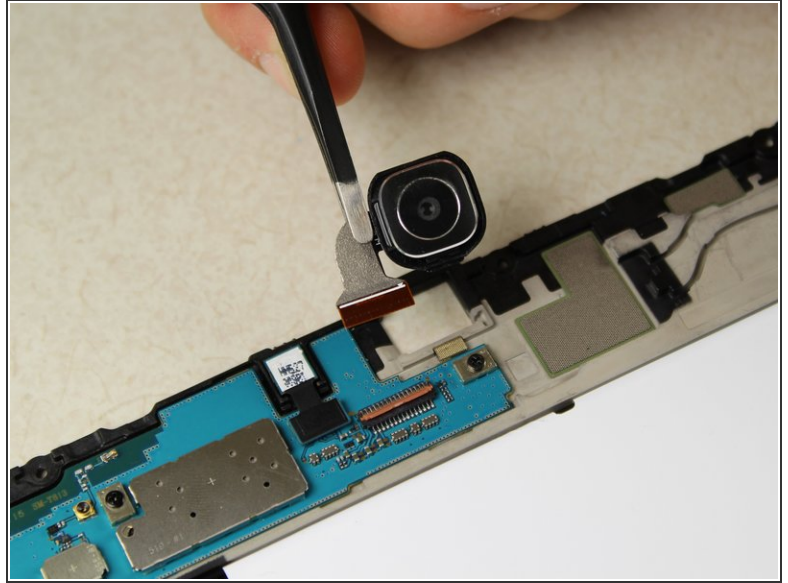
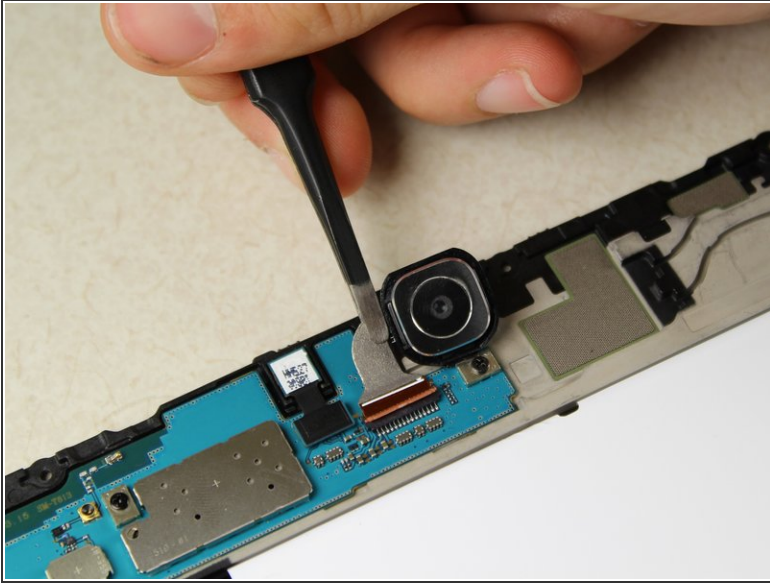
Step 13



- Pull up the orange flap on the connector using the pointed edge of the spudger.

 Pulling out the connector without the flap up could damage the connector.

Step 14



- Pull the connector out of the slot using tweezers and remove the camera.

To reassemble your device, follow these instructions in reverse order.