



Samsung Galaxy Tab S2 9.7 SM-T813 Screen Replacement

How to replace a screen in a Samsung Galaxy Tab S2 9.7 SM-T813.

Written By: Kaley Sapper



INTRODUCTION

Large amounts of adhesives are present on the backside of the screen. Exercise caution while working to avoid being cut by any broken glass in the screen.

TOOLS:

- [iOpener](#) (1)
- [Suction Handle](#) (1)
- [iFixit Opening Picks set of 6](#) (1)

A set of 6 picks will suffice, but more picks will make removing the screen easier.

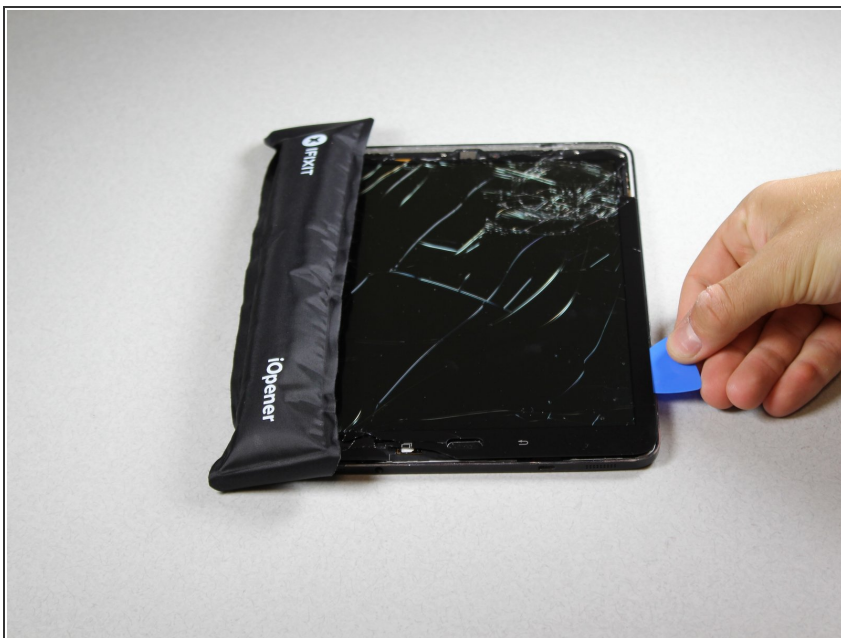
- [iFixit Opening Tools](#) (1)
 - [Tweezers](#) (1)
-

Step 1 — Screen



- Heat the iOpeners in a microwave for 1-2 minutes.
- ⚠ The iOpeners will be hot. Use caution and hold the tabs on the ends.
- Place heated iOpeners on screen edges to heat the adhesive.
- ⓘ For more detailed instructions on how to use the iOpeners, please refer to the [iOpener Instructions](#).

Step 2



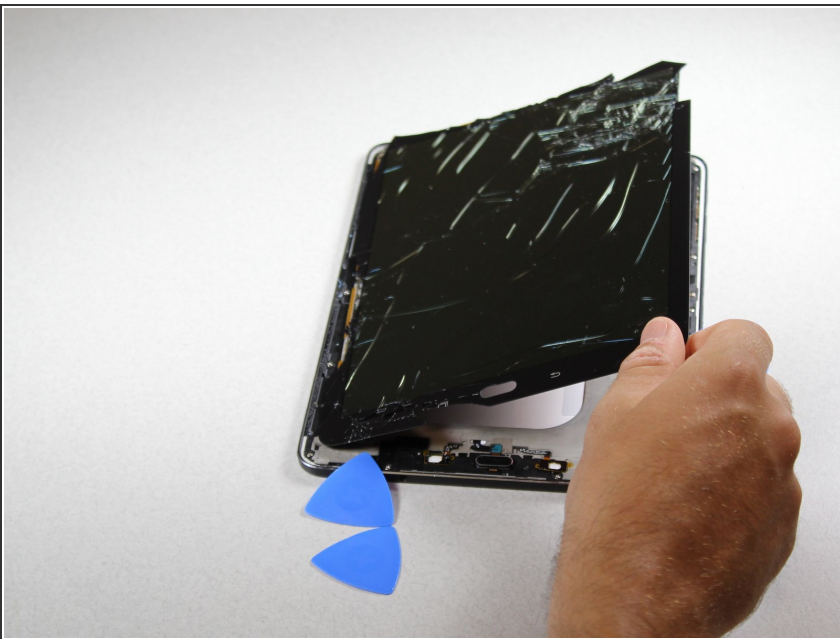
- Separate the screen assembly from the back by wedging the picks between the two components.
- Slide the picks along the edge and leave them holding the device open all around the edges.

Step 3



- Place suctioning device near the corner of the screen and gently lift up to create a gap between the front panel assembly and the back.
- Insert the picks to hold the two components apart once a gap is created.

Step 4



- Once all edges have been disconnected, carefully lift the screen off by pulling one side up.
- ⚠ Be careful not to cut yourself. Any broken glass from the screen will be sharp.

Step 5



- Using the tweezers, gently peel up on the silver tape covering the connector.

Step 6



- Use the plastic opening tool to get under the connector piece. This will allow you to remove the front panel assembly from the rest of the device.

Step 7



- Detach the connector from the inside of the device.
- Lift the screen to separate the front panel assembly from the rest of the device.

To reassemble your device, follow these instructions in reverse order.