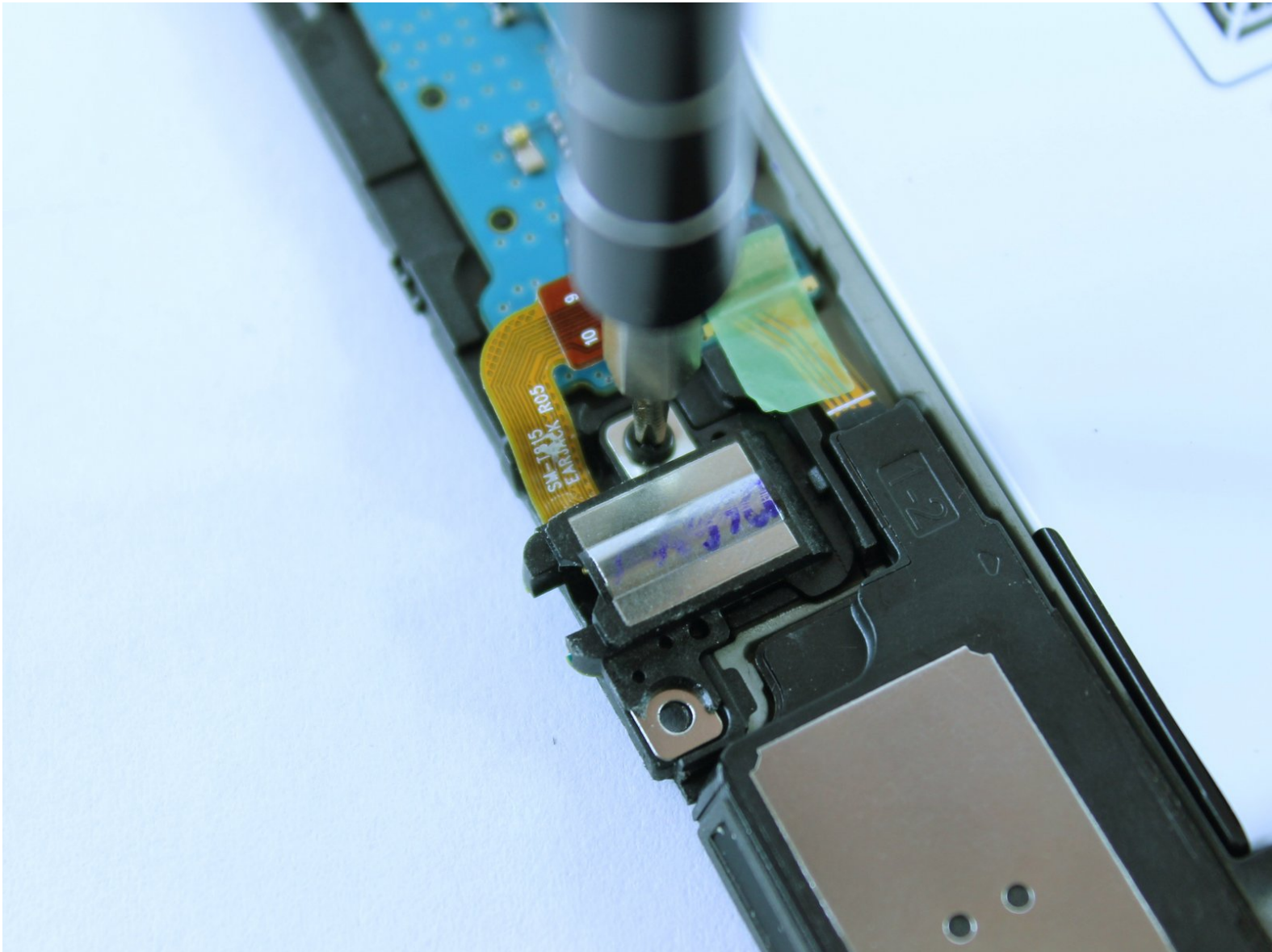




Samsung Galaxy Tab S2 9.7 Verizon Tablet Auxiliary Port Replacement

Use this guide to replace the Auxiliary Port on a Samsung Galaxy Tab S2 9.7 Verizon Tablet

Written By: Divya Prabakaran



INTRODUCTION

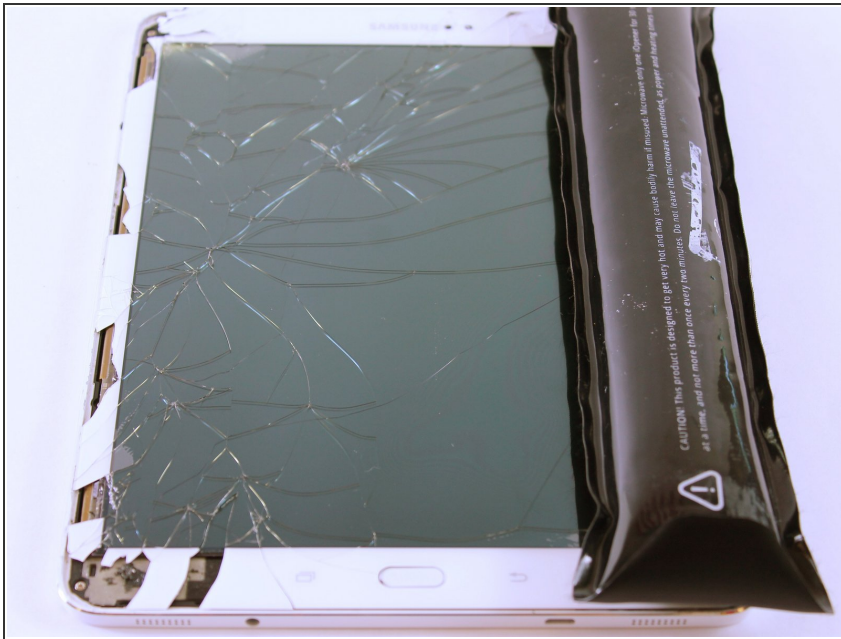
Follow this guide to bring the sound back to your headphones by replacing the auxiliary port.




TOOLS:

- [Precision Tweezers Set](#) (1)
 - [iOpener](#) (1)
 - [Suction Handle](#) (1)
 - [Metal Spudger Set](#) (1)
 - [64 Bit Driver Kit](#) (1)
-

Step 1 — Back Case



 Turn off the tablet before disassembly.

- Heat up an iOpener for 30 seconds and place on all four seams of the screen. A heat gun can be used as well.

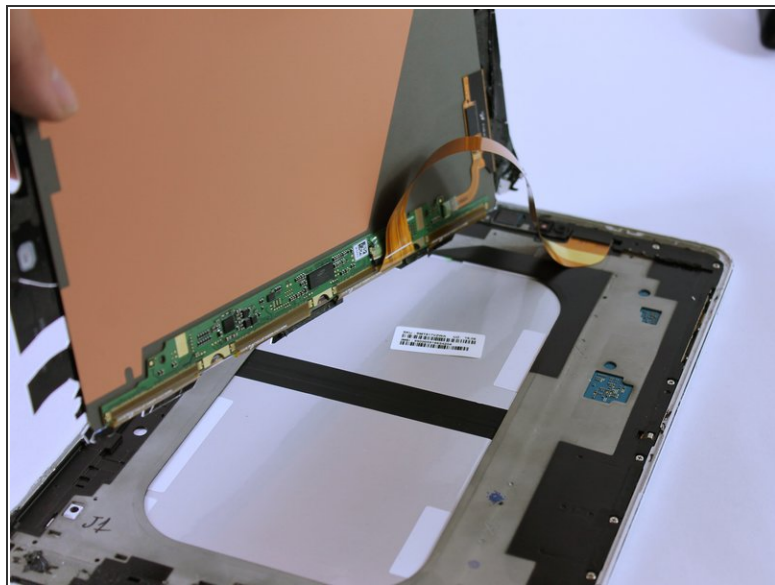
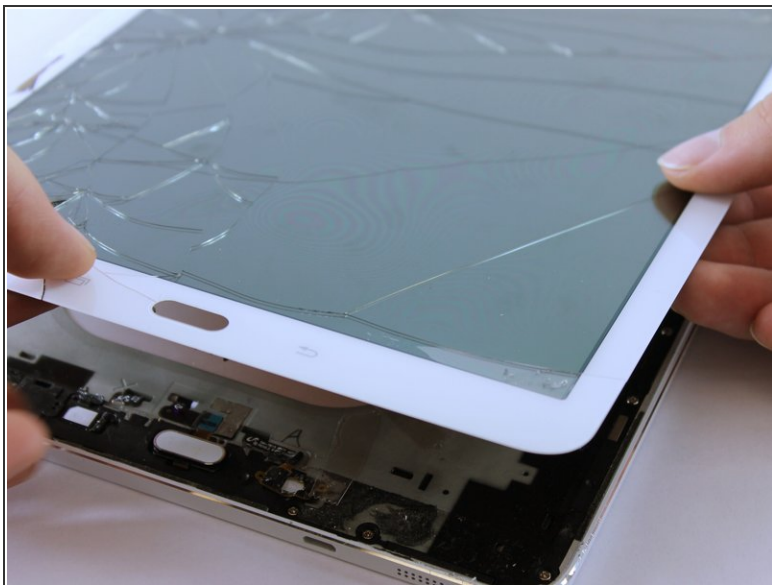
Step 2



- The glue is now melted, so using the metal spudger shown, pry open all sides of the tablet.
- When prying open near the home and touch screen buttons, use a suction cup.

 Do not stick the metal spudger past these buttons as this may damage your device.

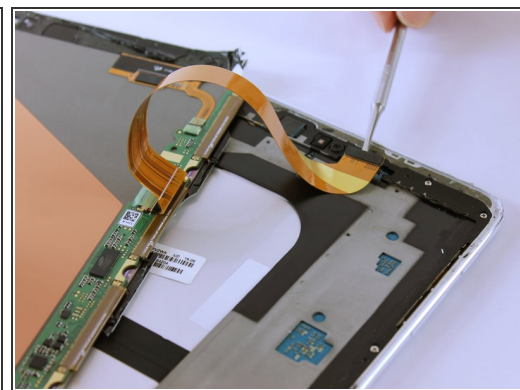
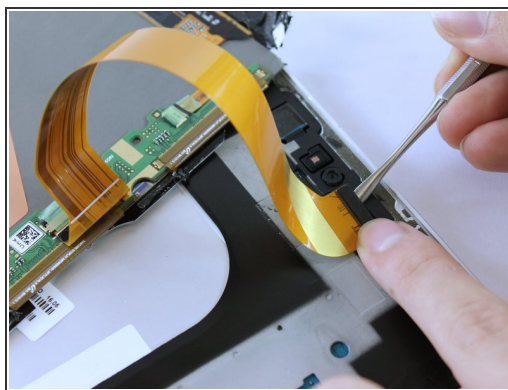
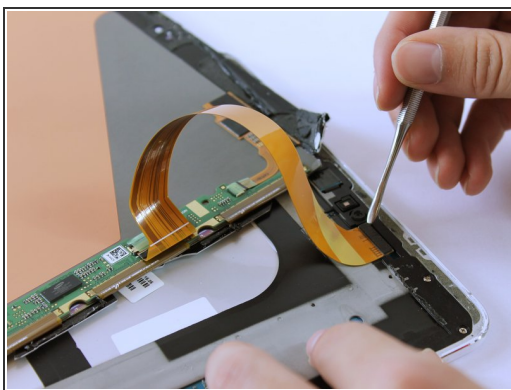
Step 3



- Carefully lift up the screen.

⚠ There is a ribbon cable attached. Lifting the screen too quickly can damage the cable.

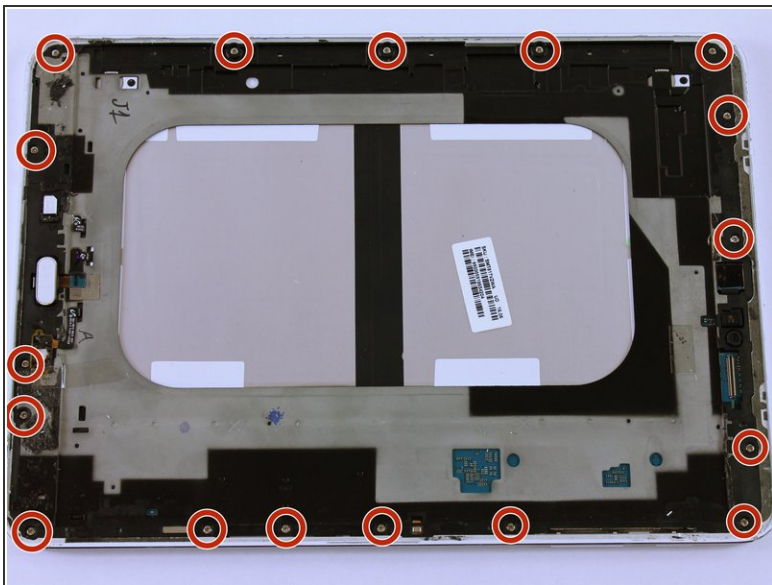
Step 4



- Remove the ribbon cable using the Metal Spudger.

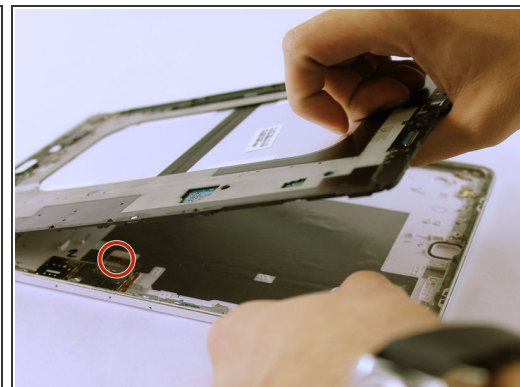
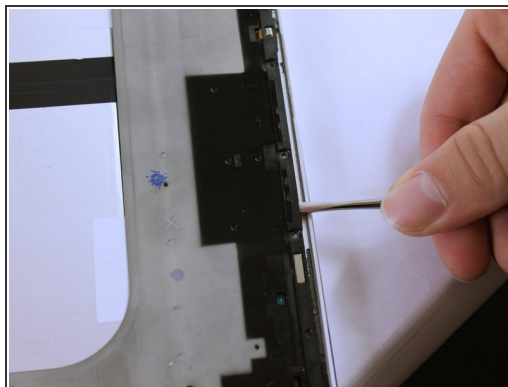
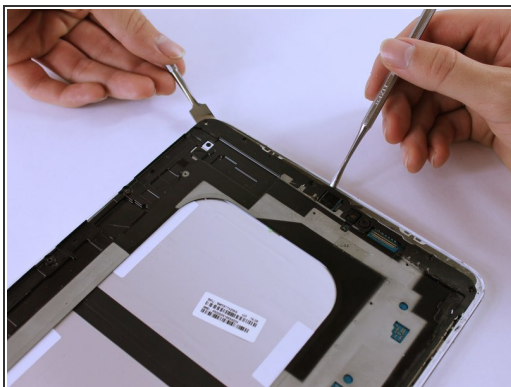
ⓘ The ribbon may be taped underneath to the grey frame. Gently lift the ribbon to untape it.

Step 5



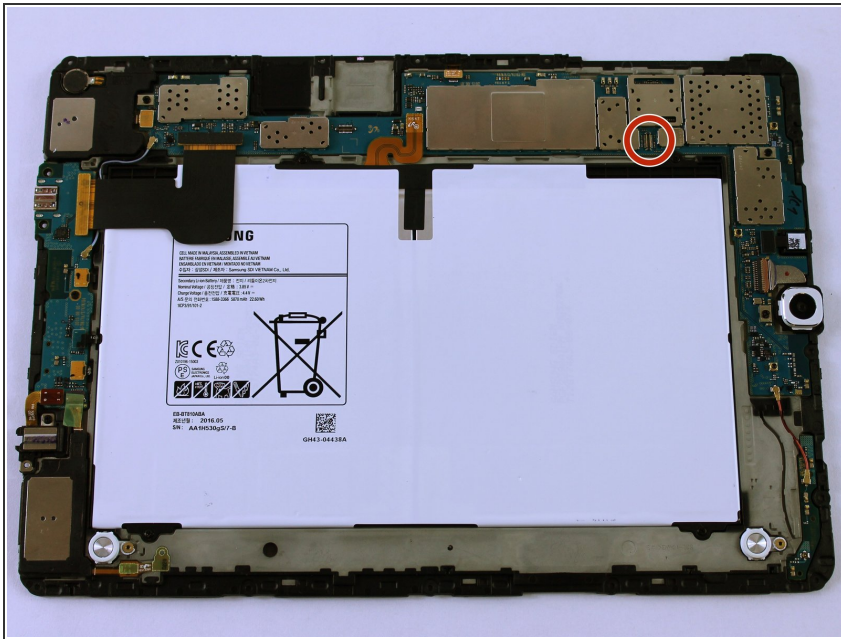
- Remove all seventeen 3 mm screws using a PH000 Phillips screwdriver.

Step 6



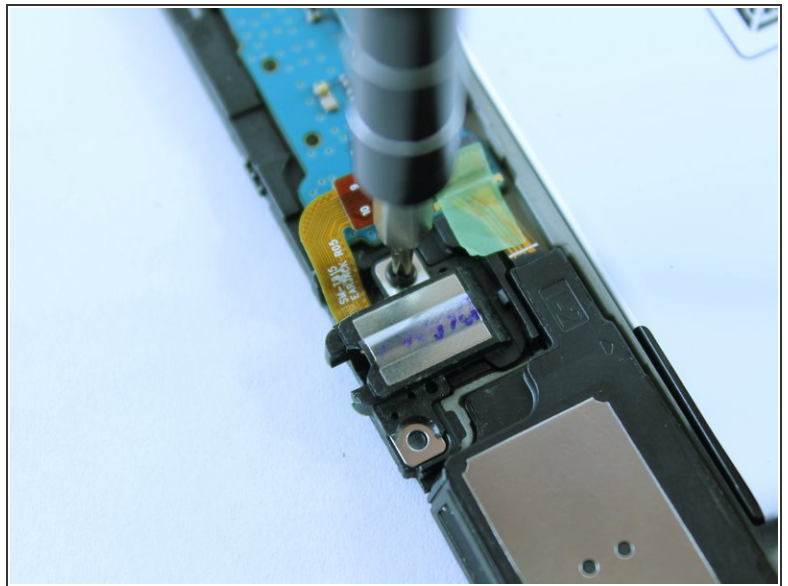
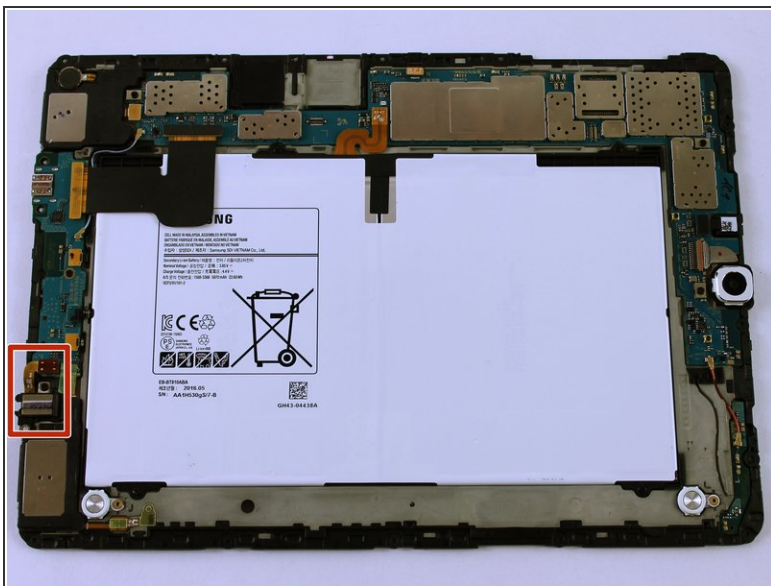
- Lift the black frame using the two Metal Spudgers shown.
- ⓘ On the third picture, there is a Sim Card component that is connected to the frame and back cover. As you lift up the frame, it'll detach. This is normal.

Step 7



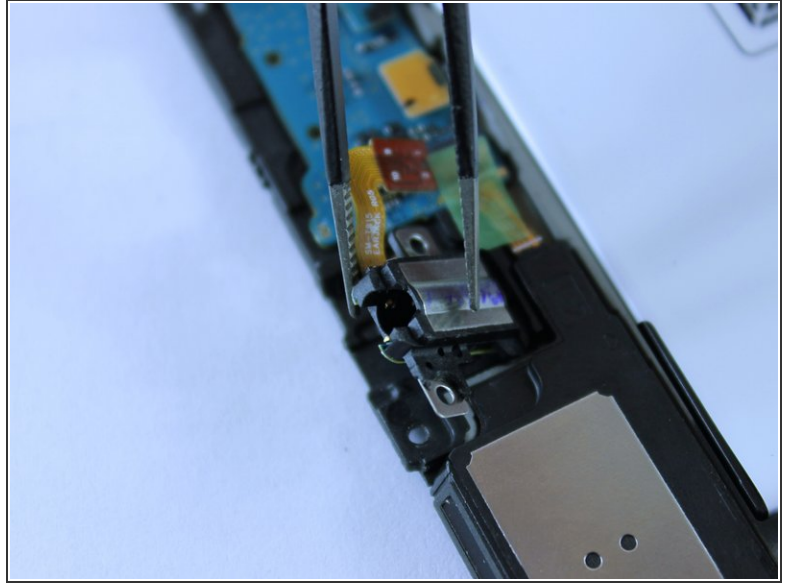
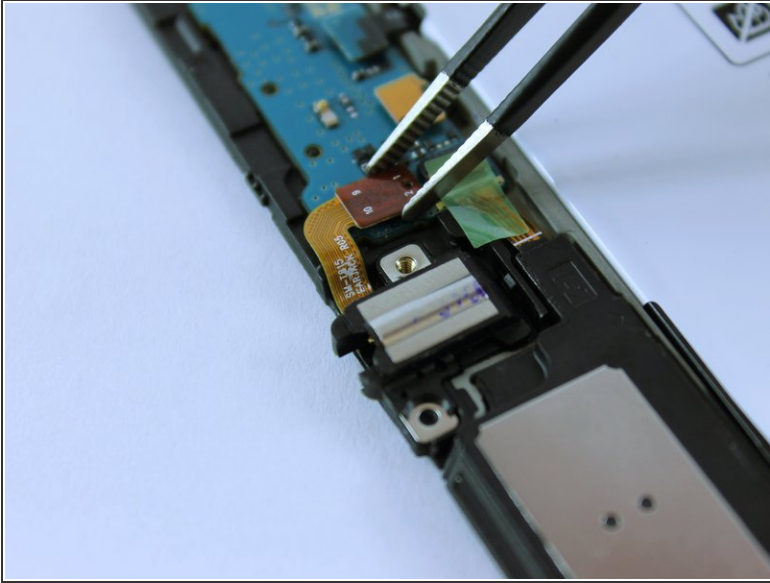
- Once lifted, flip the grey frame over.
- This component connects to the sim card.
- ☑ Remember to click this component back into place when reassembling the tablet.

Step 8 — Auxiliary Port



- This is where the auxiliary port is located.
- Remove the black 3mm screw using a PH000 Phillips screwdriver.

Step 9



- Unclip the ribbon using the Blunt ESD Tweezer.
- Lift up the auxiliary port using the Blunt ESD Tweezer.

To reassemble your device, follow these instructions in reverse order.