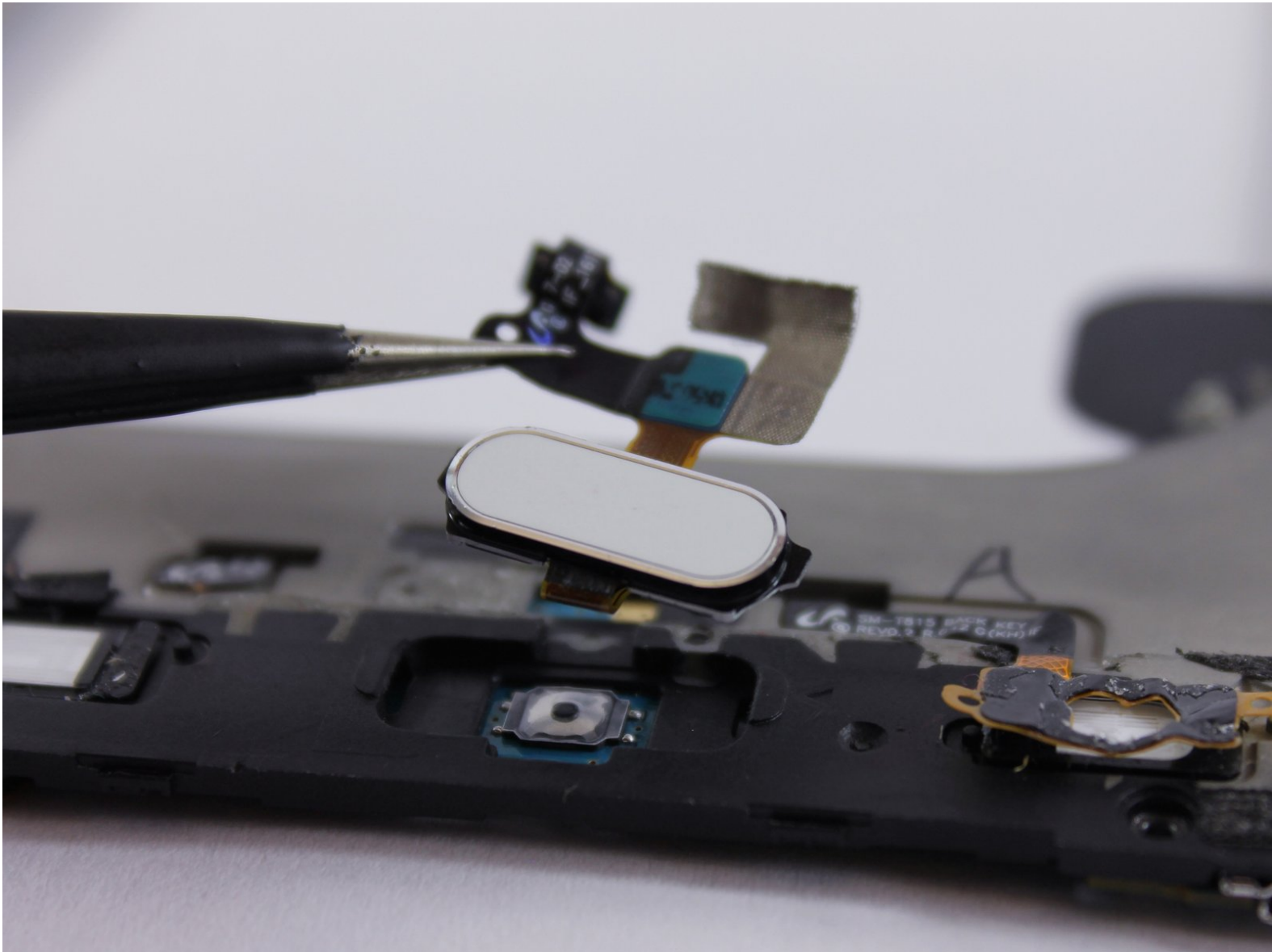




# Samsung Galaxy Tab S2 9.7 Verizon Tablet Home Button Replacement

Use this guide to replace the home button on a Samsung Galaxy Tab S2 9.7 Verizon Tablet

Written By: Divya Prabakaran



## INTRODUCTION

If your home button is no longer functioning properly, it may have become worn or gotten stuck over time, this guide can help you replace it.


---

### TOOLS:

- [Phillips #000 Screwdriver](#) (1)
  - [iOpener](#) (1)
  - [Suction Handle](#) (1)
  - [Metal Spudger Set](#) (1)
  - [Precision Tweezers Set](#) (1)
  - [ESD Safe Tweezers Blunt Nose](#) (1)
-

## Step 1 — Back Case



 Turn off the tablet before disassembly.

- Heat up an iOpener for 30 seconds and place on all four seams of the screen. A heat gun can be used as well.

## Step 2

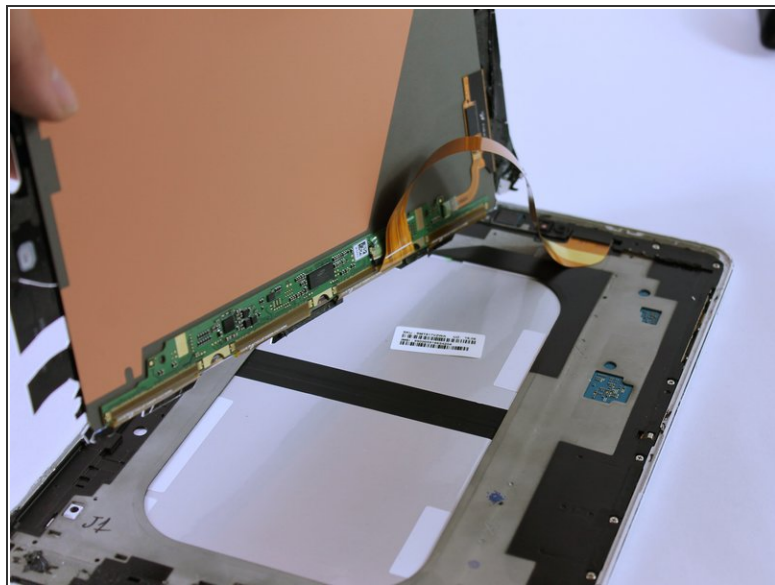
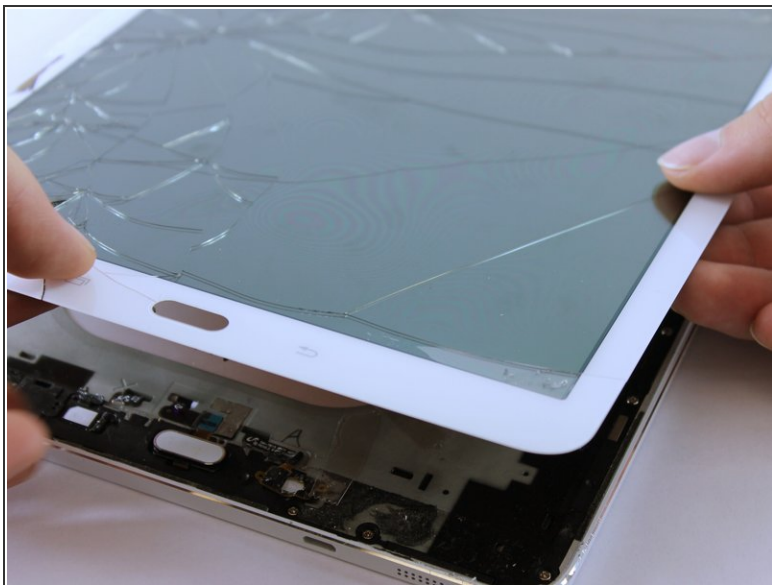


- The glue is now melted, so using the metal spudger shown, pry open all sides of the tablet.
- When prying open near the home and touch screen buttons, use a suction cup.

 Do not stick the metal spudger past these buttons as this may damage your device.



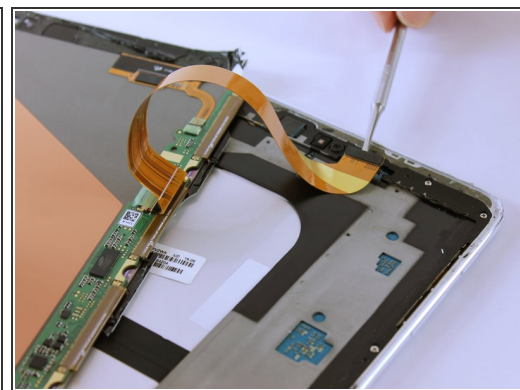
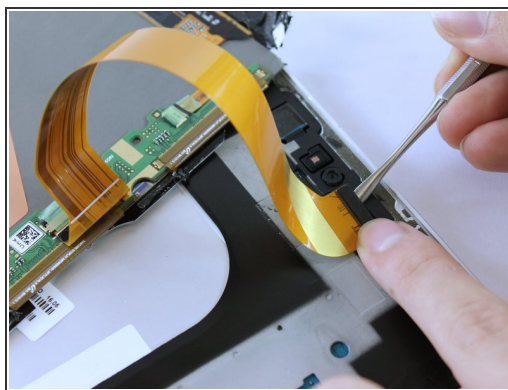
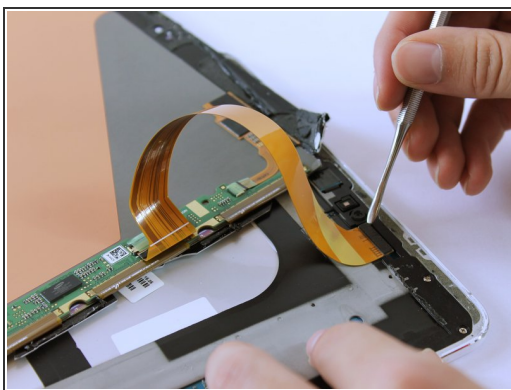
## Step 3



- Carefully lift up the screen.

⚠ There is a ribbon cable attached. Lifting the screen too quickly can damage the cable.

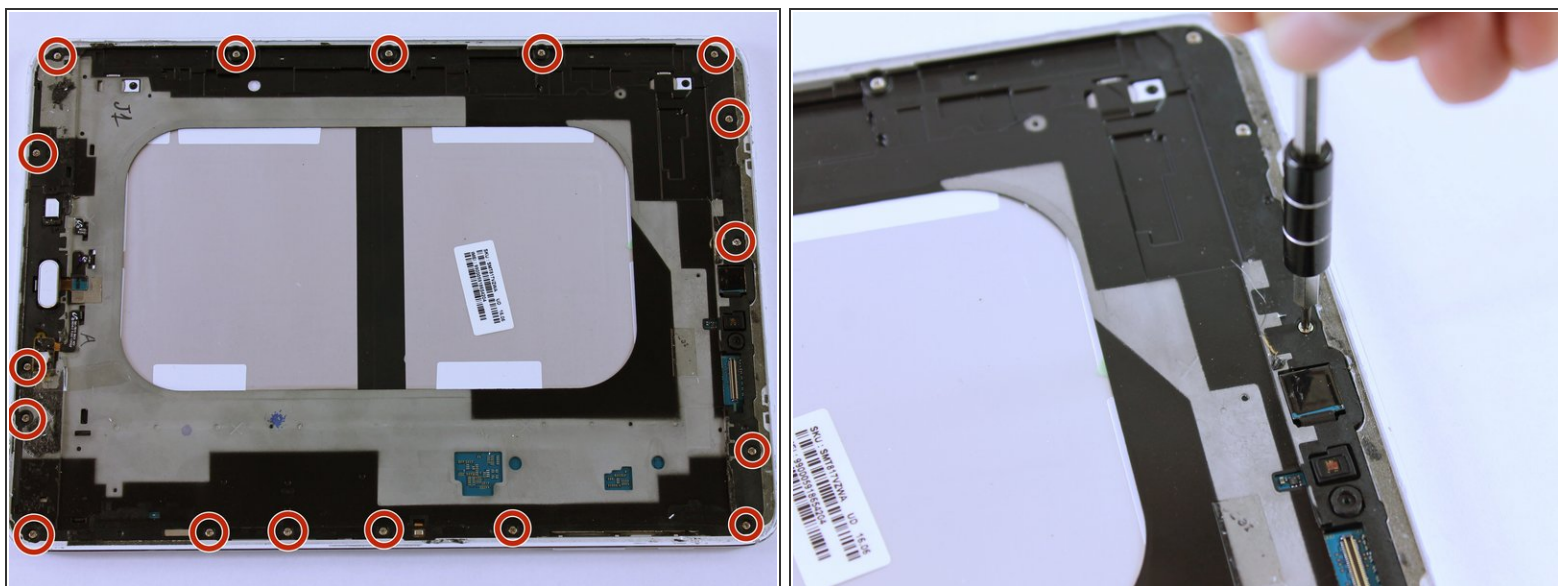
## Step 4



- Remove the ribbon cable using the Metal Spudger.

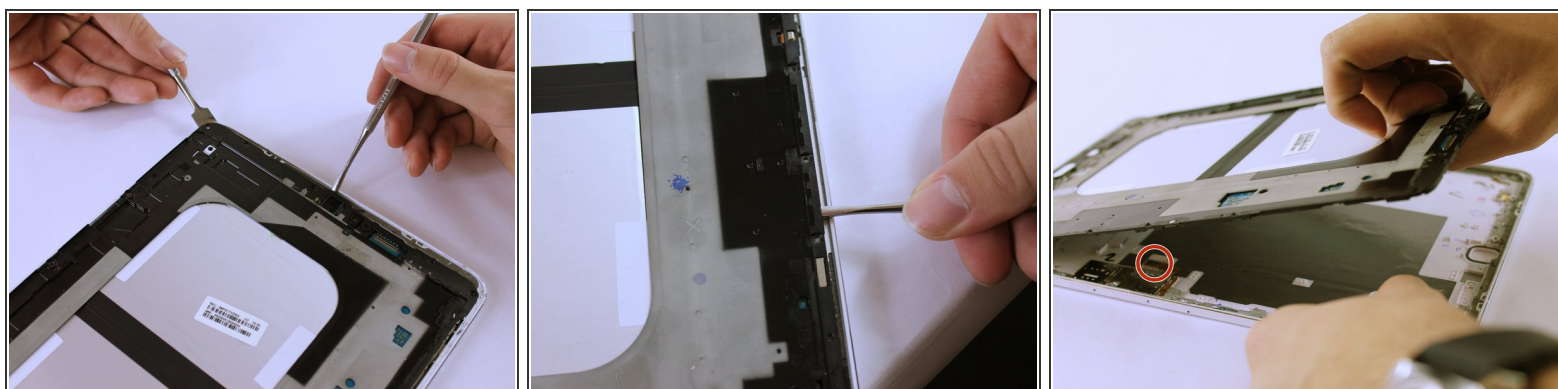
**i** The ribbon may be taped underneath to the grey frame. Gently lift the ribbon to untape it.

## Step 5



- Remove all seventeen 3 mm screws using a PH000 Phillips screwdriver.

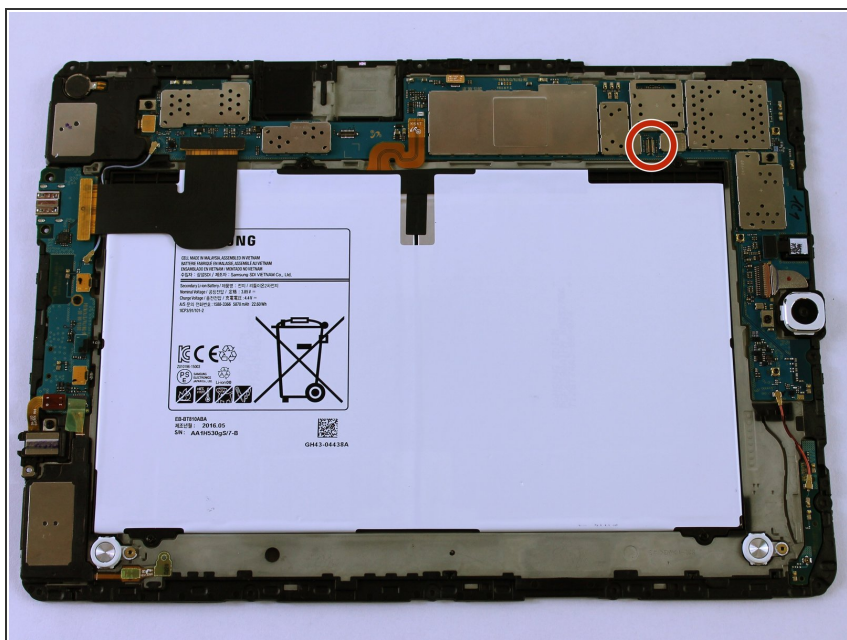
## Step 6



- Lift the black frame using the two Metal Spudgers shown.
- ❗ On the third picture, there is a Sim Card component that is connected to the frame and back cover. As you lift up the frame, it'll detach. This is normal.

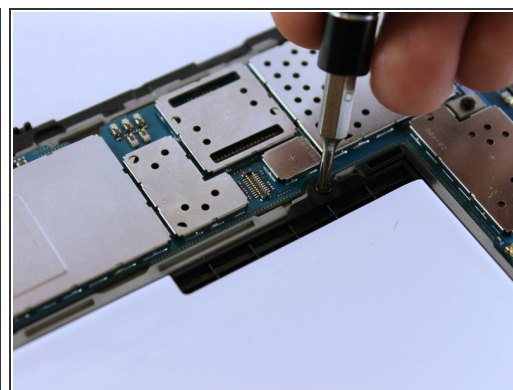
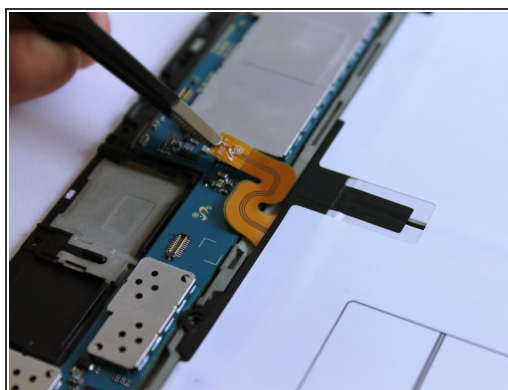
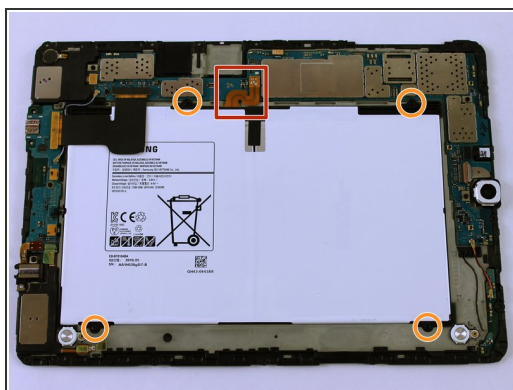


## Step 7



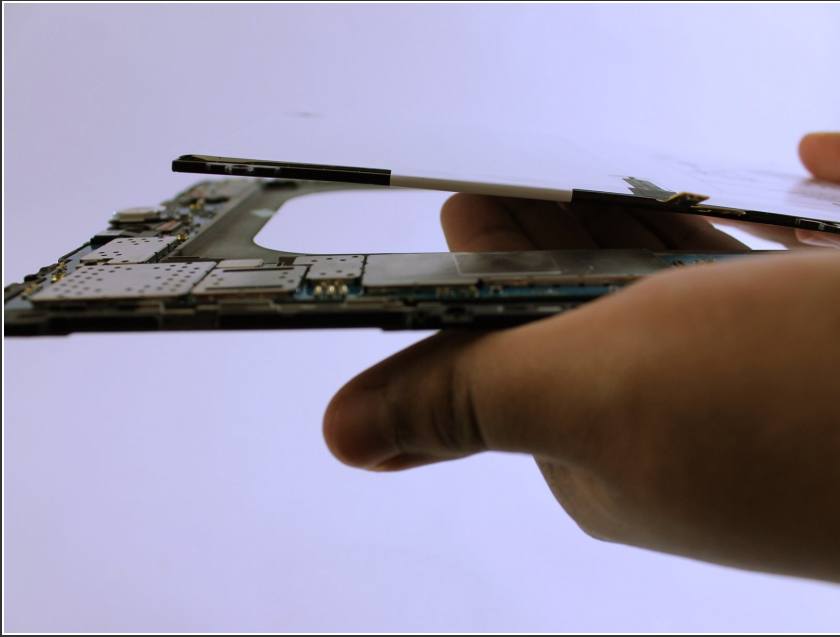
- Once lifted, flip the grey frame over.
- This component connects to the sim card.
- ☑ Remember to click this component back into place when reassembling the tablet.

## Step 8 — Battery



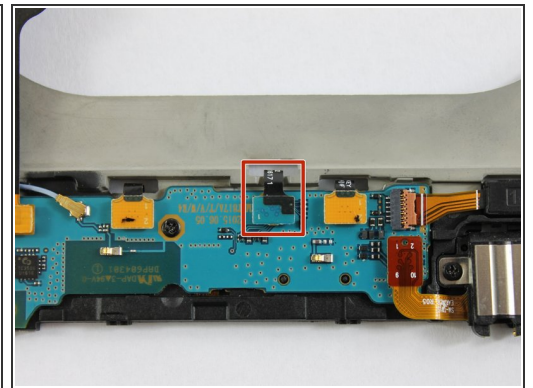
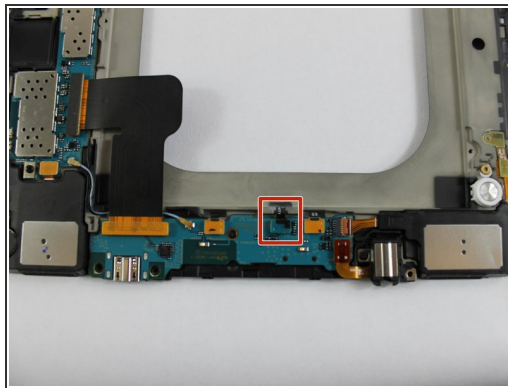
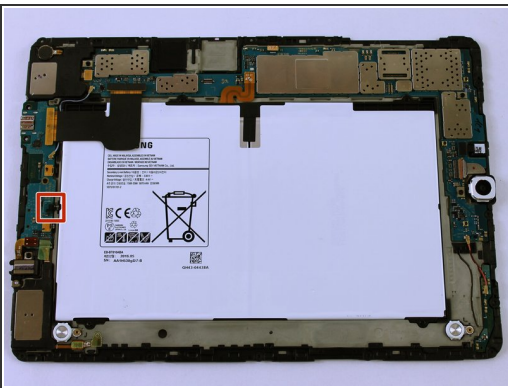
- Unclip the orange ribbon cable located above the battery using the Blunt ESD Tweezer.
- Remove the four black 3mm screws using a PH000 Phillips screwdriver.

## Step 9



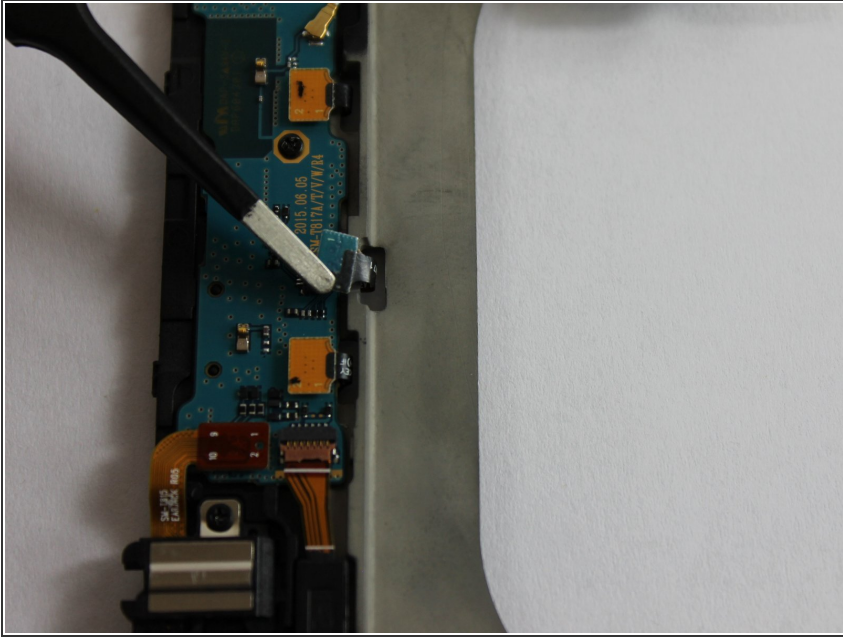
- Hold the frame and pop the battery off from the other side.

## Step 10 — Home Button



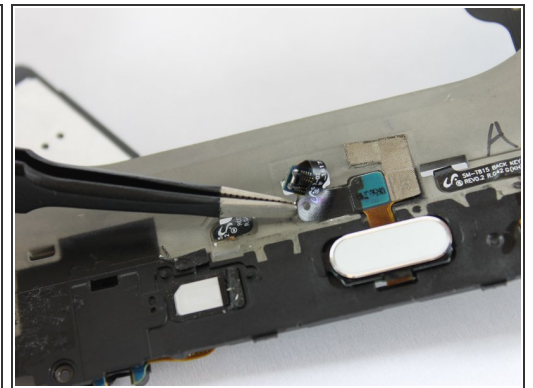
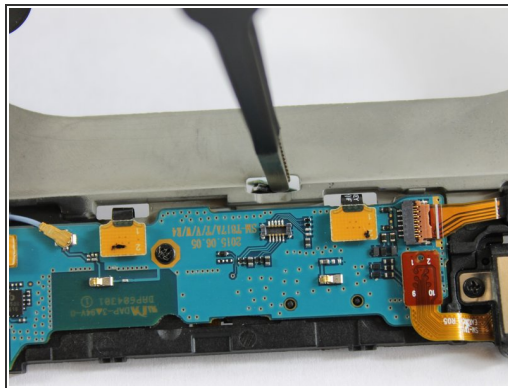
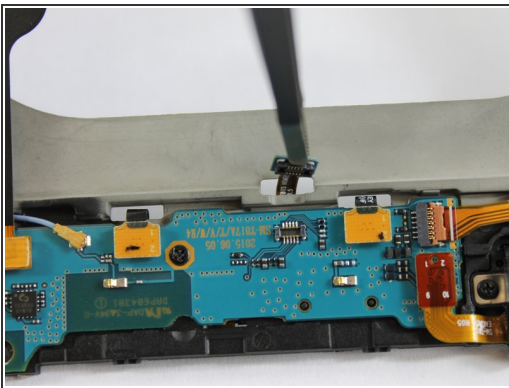
- This is where the ribbon cable for the home button is located.

## Step 11



- Unclip the blue ribbon cable using the Blunt ESD Tweezer.

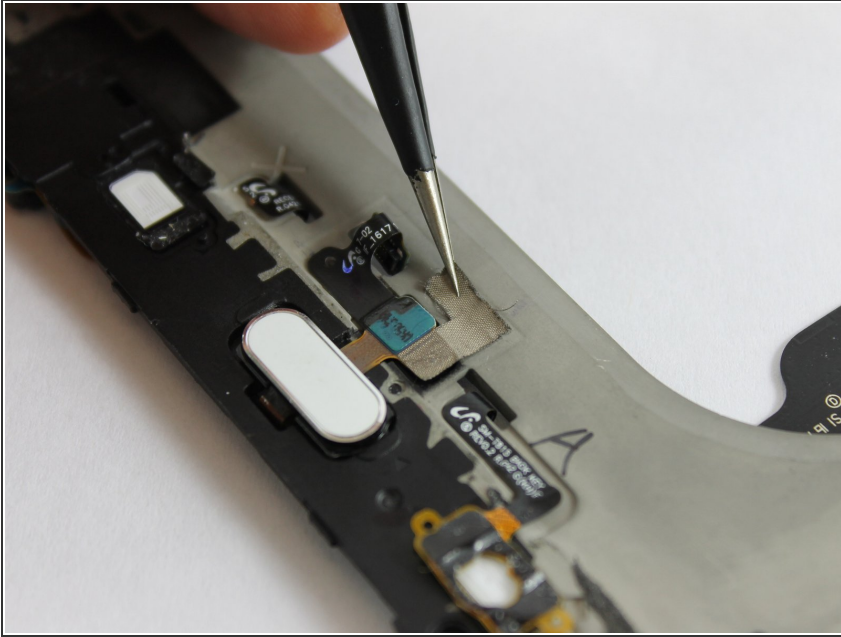
## Step 12



- Carefully push the cable through the hole to the other side of the frame.

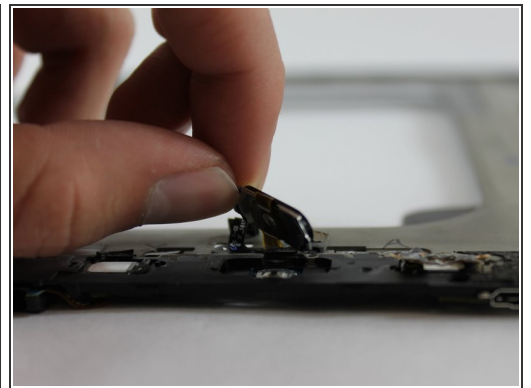
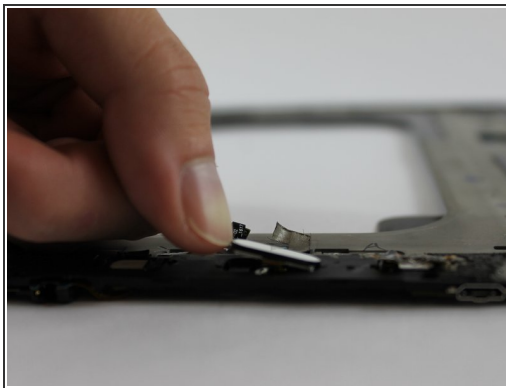
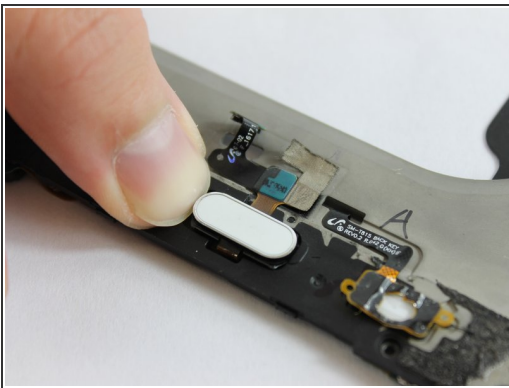


## Step 13



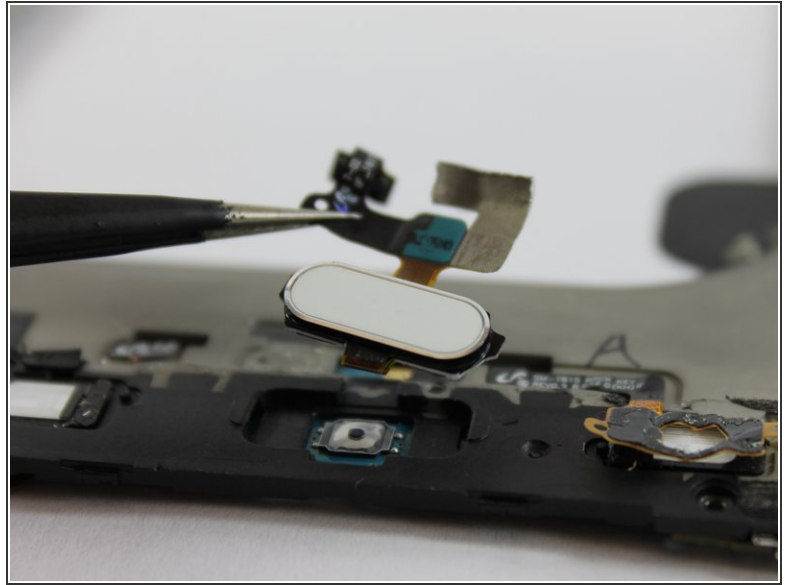
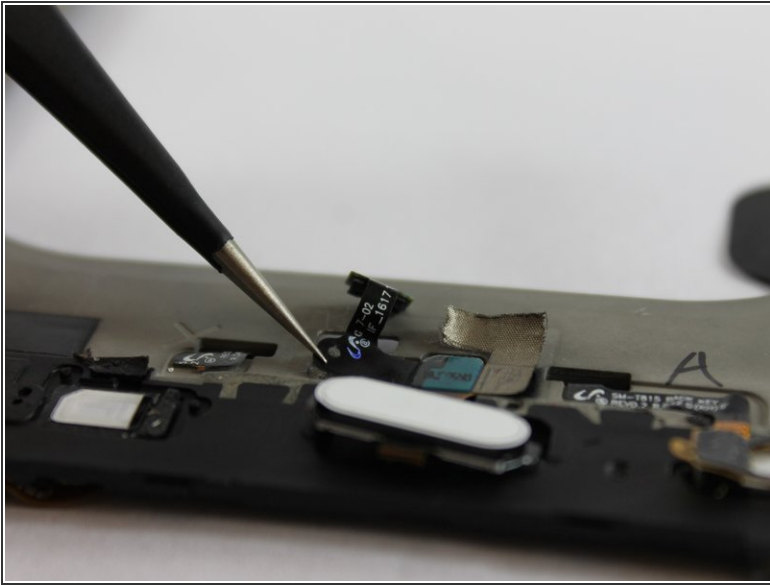
- Using the pointed ESD Tweezer, lift up the silver tape.

## Step 14



- Using your thumb, push the home button to the right and lift up to dislodge it.

## Step 15



- Peel the ribbon cable off carefully, it may be glued to the grey frame.
- Lift the home button.

To reassemble your device, follow these instructions in reverse order.