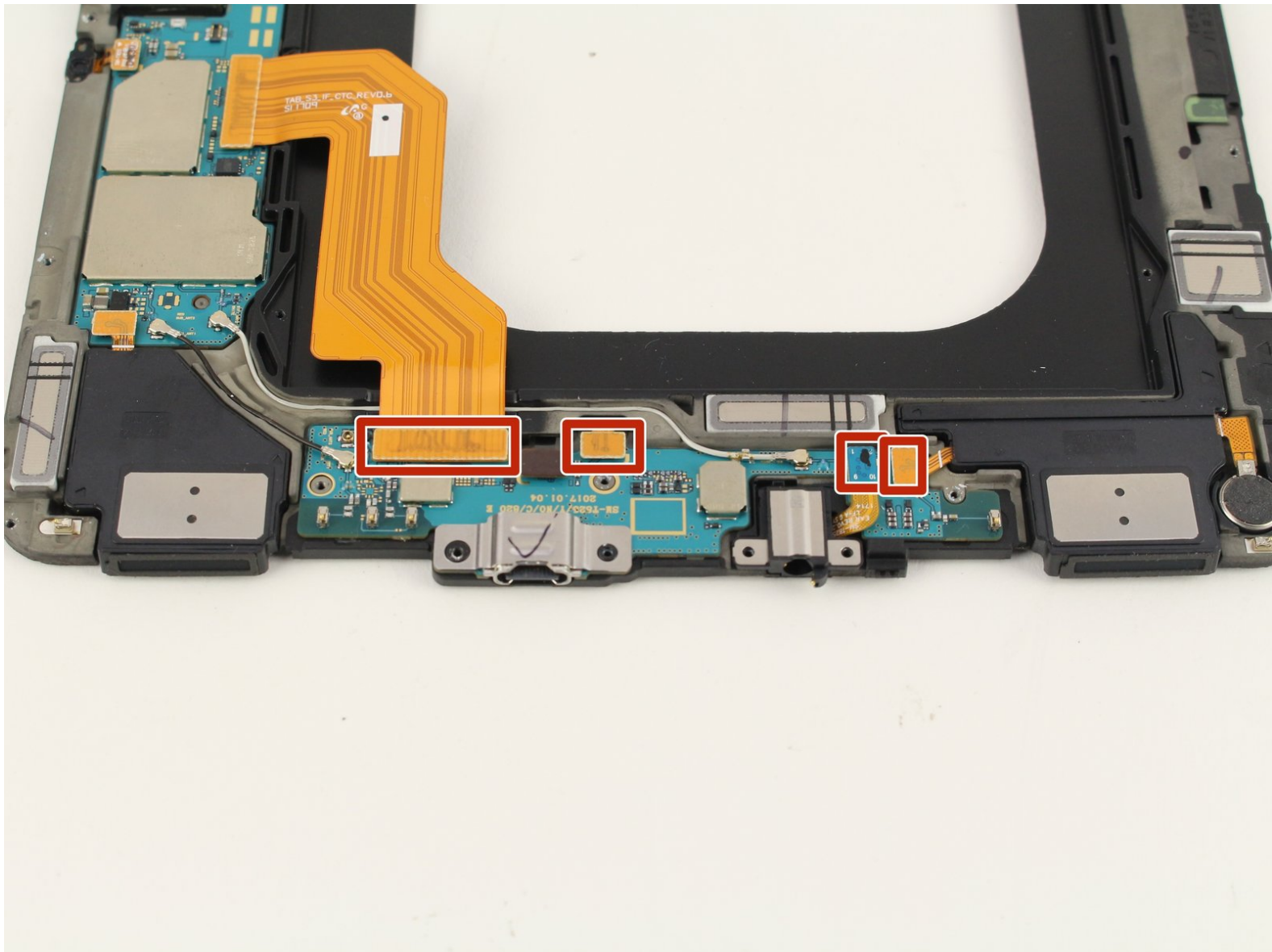




Samsung Galaxy Tab S3 Daughterboard Replacement

This guide will show how to replace the daughterboard of the Galaxy Tab S3. This will repair a broken charging port as the port is soldered onto the board.

Written By: Austin Blakely



INTRODUCTION

This guide will show the process behind replacing a daughterboard in the Samsung Galaxy Tab S3. This will be useful for fixing a broken charging port, as the port is soldered onto the daughterboard. It would also be useful if the home button, auxiliary, charging port and left speaker simultaneously stopped working, as these components all filter communications through the daughterboard to the motherboard for processing.



TOOLS:

- [Microwave](#) (1)
- [iOpener](#) (1)
- [iFixit Opening Tools](#) (1)
- [Spudger](#) (1)
- [Plastic Cards](#) (1)
- [Phillips #000 Screwdriver](#) (1)



PARTS:

- [Galaxy Tab S3 9.7 Charging Assembly](#) (1)

Step 1 — Display



- To soften the adhesive holding the tablet together, heat up the edges of the glass panel using a heated **iOpener** on the edge of the device.
 - We used two **iOpeners** to open up the tablet. The process is doable with a single **iOpener**, but would take substantially longer. Alternatively, you can use a heat gun to quickly loosen the adhesive.
 - Leave the **iOpener** on edge for two minutes.
- i** Be careful not to burn yourself while handling the hot **iOpener**. For more information on the **iOpener**, use the [iOpener Instructions Guide](#).

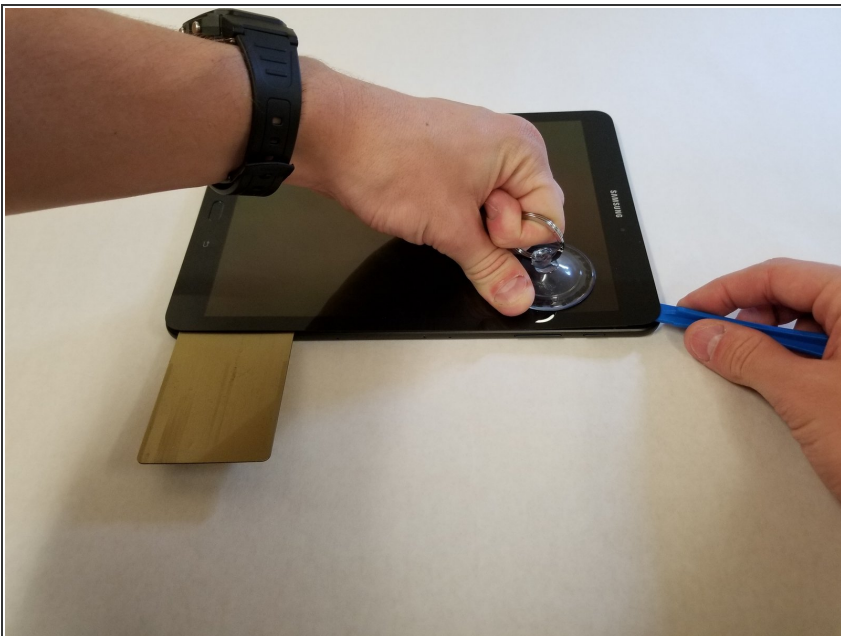
Step 2



- Place a **suction cup** near edge that you heated up with the **iOpener**.
- Press down on the **suction cup** to create a seal, and pull up with force to create a separation between the display and the midframe.
- Use an **opening tool** to split apart the glass panel from the midframe.

⚠ Be careful to not break the glass when prying from the frame.

Step 3




- As you continue along the edge using the **opening tool**, use a **plastic card** to keep the glass separate from the midframe.

★ You can also use multiple **opening picks** instead of a **plastic card**.

Step 4



 As you remove the glass panel, be careful not to tear the ribbon connecting the motherboard to the display.

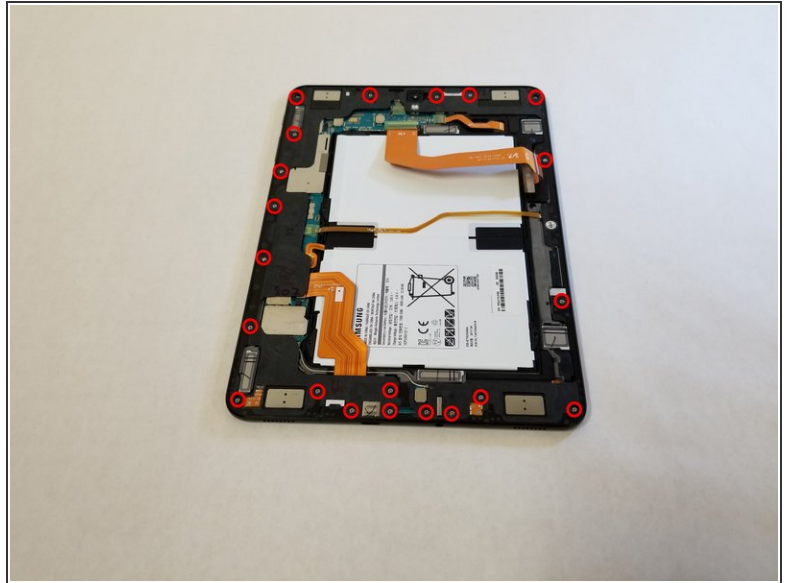
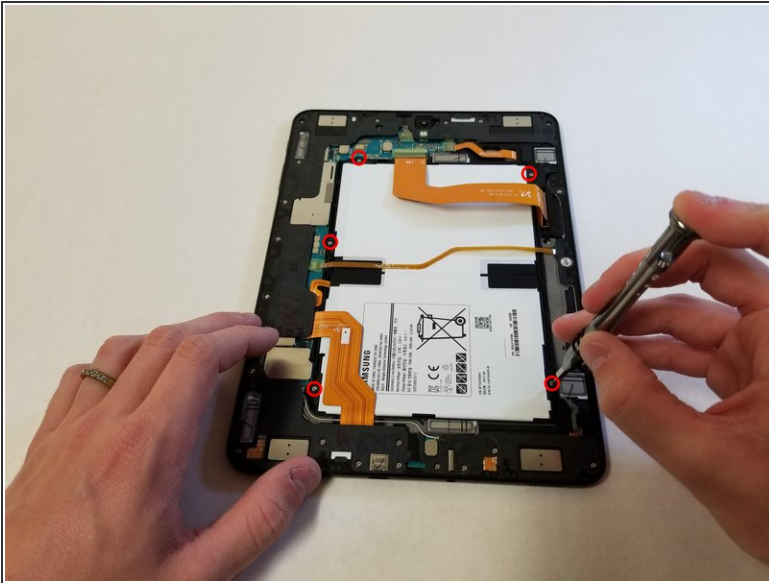
- Pull off the glass panel using the **suction cup**.
- Carefully disconnect the ribbon connecting the display assembly to the motherboard. You can disconnect this ribbon from either end.

Step 5



- Repeat steps 3 through 7 to remove the rear glass panel on the opposite side of the device.

Step 6 — Battery



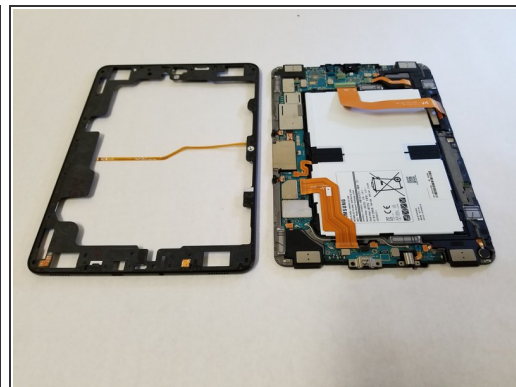
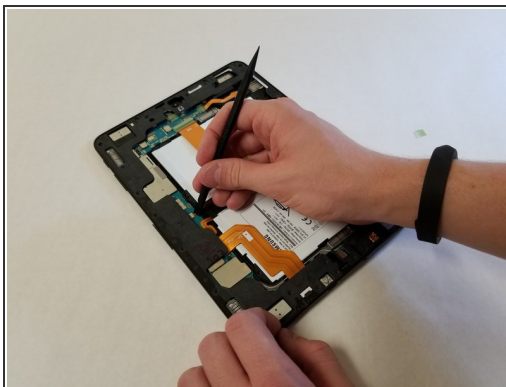
- Use a Phillips #000 screwdriver to unscrew the five screws securing the battery, and the twenty-two screws surrounding the midframe.

Step 7



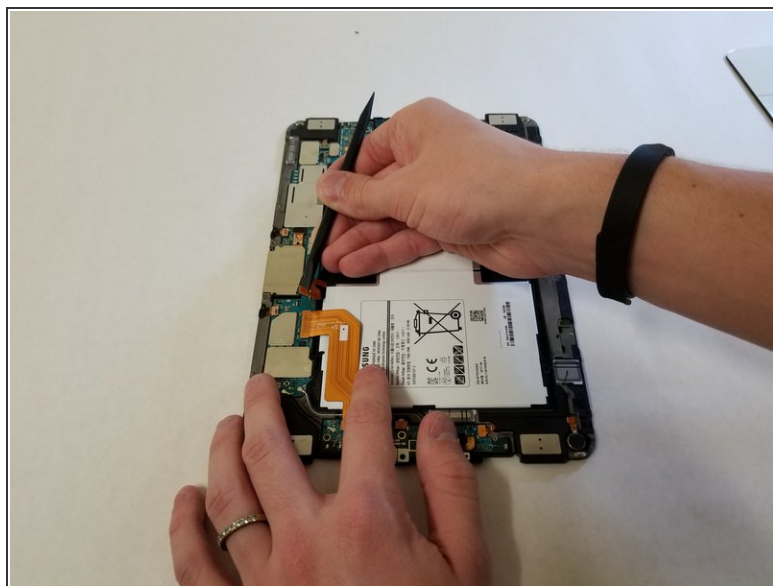
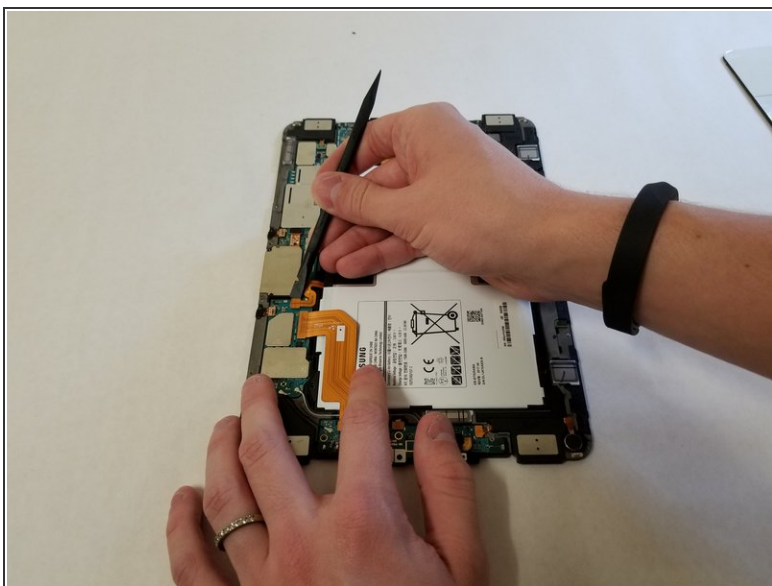
- The midframe should snap off from the device's motherboard.

Step 8



- Locate the ribbon running from the midframe and disconnect it from the motherboard with the flat end of a **spudger**.

Step 9



- Use the flat end of the **spudger** to pop off the connector between the battery and the motherboard.

Step 10



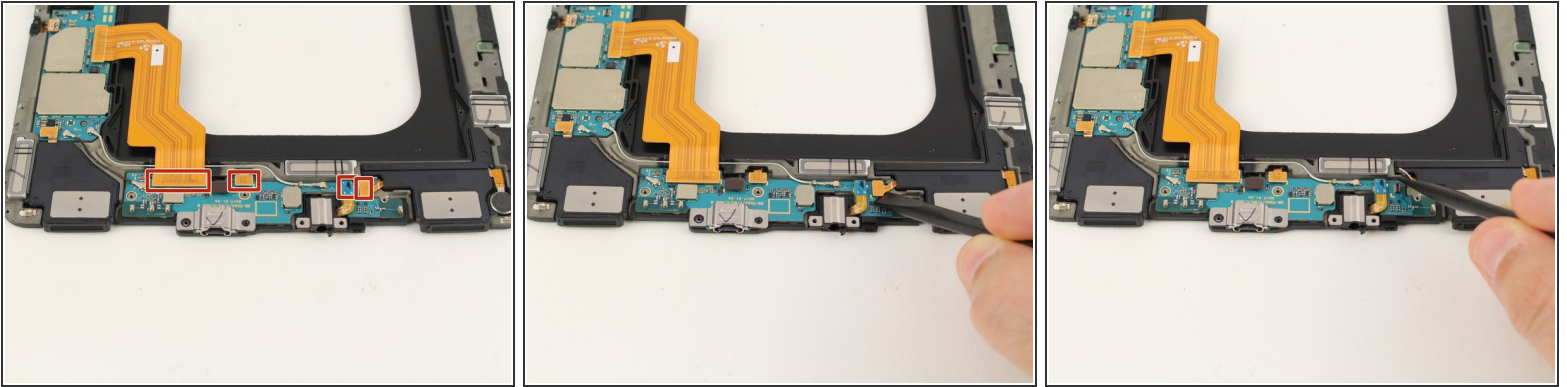
- Flip the midframe over and pop the battery out, making sure to slide it out from underneath the ribbon cables.

Step 11



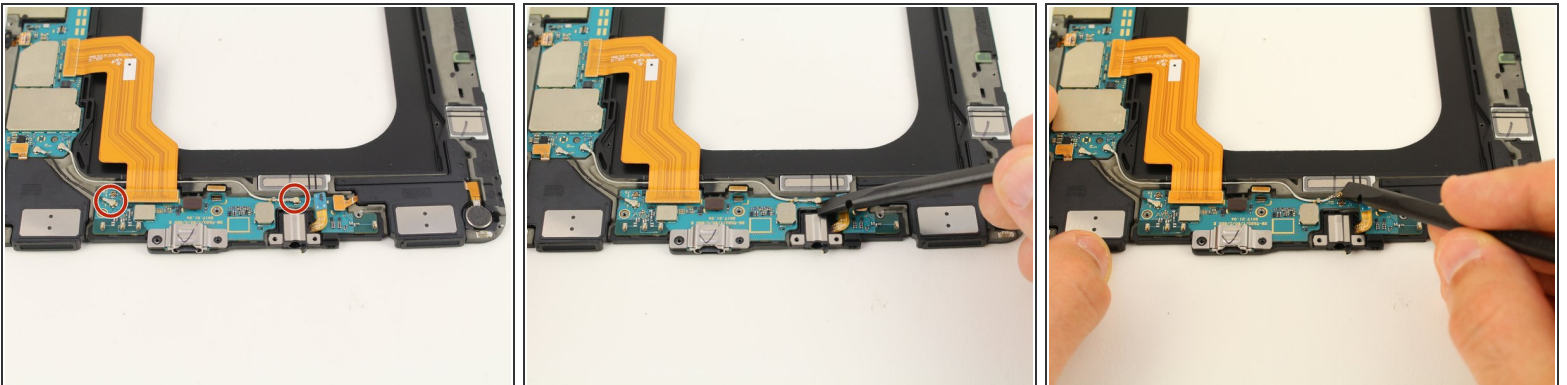
- The battery should now be removed and detached from the device.

Step 12 — Daughterboard



- Use a spudger to pry up four press fit connectors from the lower board containing the charging port.

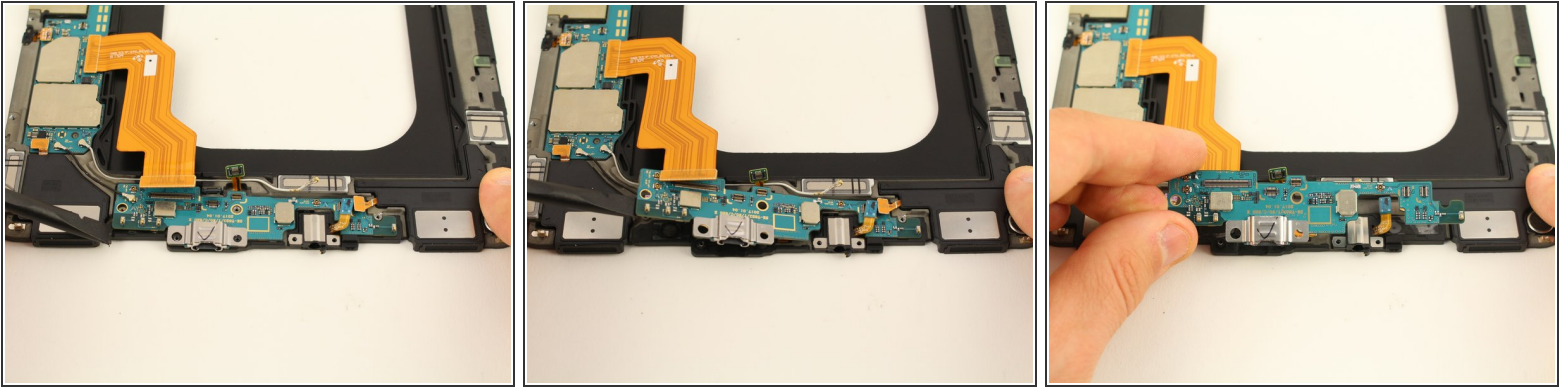
Step 13



- Pry up the two coaxial cables joining the daughterboard to the motherboard.

⚠ Be sure to pull the white coaxial cable from the small bracket holding the wire to the daughterboard before removal.

Step 14



- Pry the daughterboard up from the midframe with a spudger.
- Remove the daughterboard.

To reassemble your device, follow these instructions in reverse order.