



Samsung Galaxy Tab S3 Micro SD Card Reader Replacement

This guide shows how to replace the Micro SD card tray in your Galaxy Tab S3. If your Micro SD card reader is broken or malfunctioning, look here.

Written By: Austin Blakely



INTRODUCTION

This guide explains how to replace a faulty Micro SD card reader in the Samsung Galaxy S3. This requires getting in the device, which with Samsung means lots of glue, so come equipped with an iOpener or heat gun. Once inside, the Micro SD card tray is totally modular, and is easy to remove and replace. You'll need to replace the Micro SD card reader if your device doesn't recognize or has trouble transferring data to or from a Micro SD card.



TOOLS:

- [Microwave](#) (1)
 - [iOpener](#) (1)
 - [iFixit Opening Tools](#) (1)
 - [Spudger](#) (1)
 - [Plastic Cards](#) (1)
 - [Phillips #00 Screwdriver](#) (1)
-

Step 1 — Display



- To soften the adhesive holding the tablet together, heat up the edges of the glass panel using a heated **iOpener** on the edge of the device.
 - We used two **iOpeners** to open up the tablet. The process is doable with a single **iOpener**, but would take substantially longer. Alternatively, you can use a heat gun to quickly loosen the adhesive.
 - Leave the **iOpener** on edge for two minutes.
- i** Be careful not to burn yourself while handling the hot **iOpener**. For more information on the **iOpener**, use the [iOpener Instructions Guide](#).

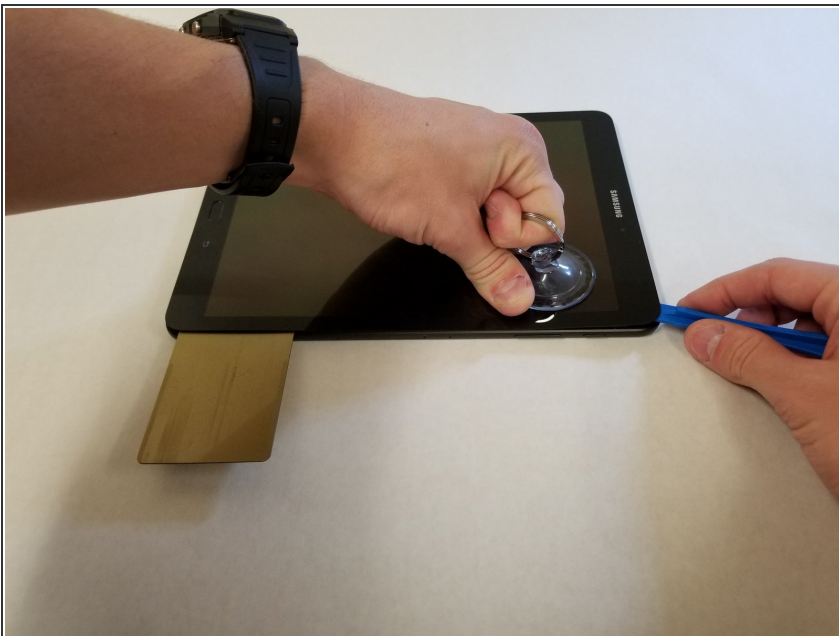
Step 2



- Place a **suction cup** near edge that you heated up with the **iOpener**.
- Press down on the **suction cup** to create a seal, and pull up with force to create a separation between the display and the midframe.
- Use an **opening tool** to split apart the glass panel from the midframe.

⚠ Be careful to not break the glass when prying from the frame.

Step 3




- As you continue along the edge using the **opening tool**, use a **plastic card** to keep the glass separate from the midframe.

★ You can also use multiple **opening picks** instead of a **plastic card**.

Step 4



 As you remove the glass panel, be careful not to tear the ribbon connecting the motherboard to the display.

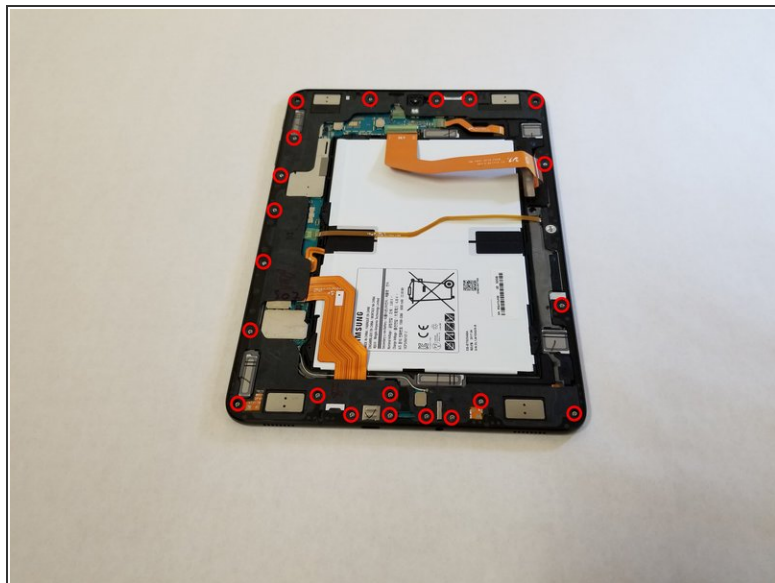
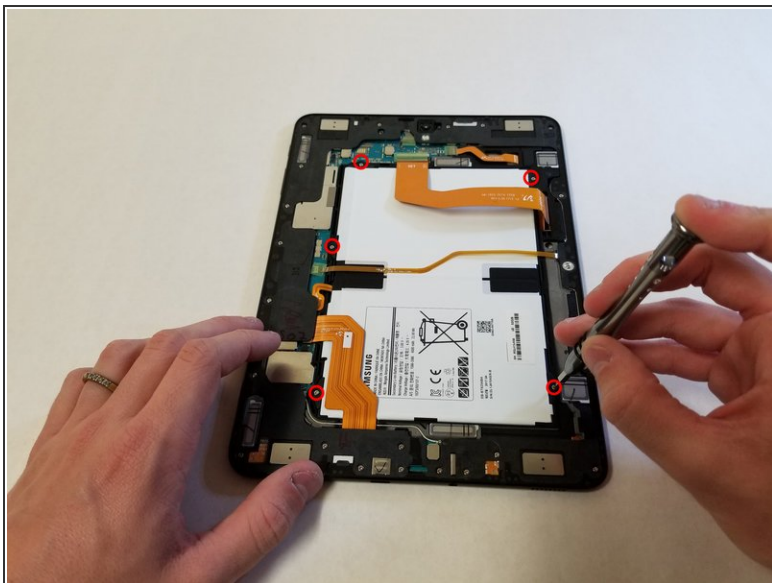
- Pull off the glass panel using the **suction cup**.
- Carefully disconnect the ribbon connecting the display assembly to the motherboard. You can disconnect this ribbon from either end.

Step 5



- Repeat steps 3 through 7 to remove the rear glass panel on the opposite side of the device.

Step 6 — Battery



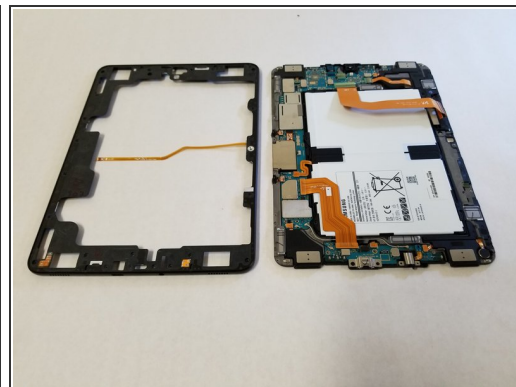
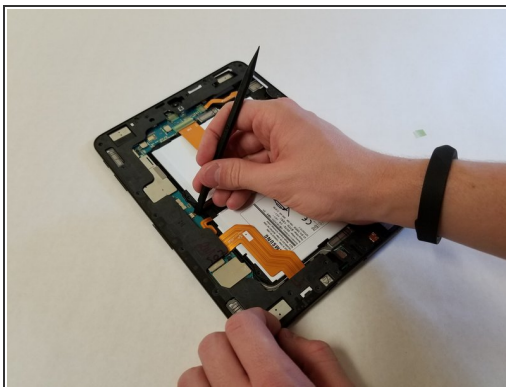
- Use a Phillips #000 screwdriver to unscrew the five screws securing the battery, and the twenty-two screws surrounding the midframe.

Step 7



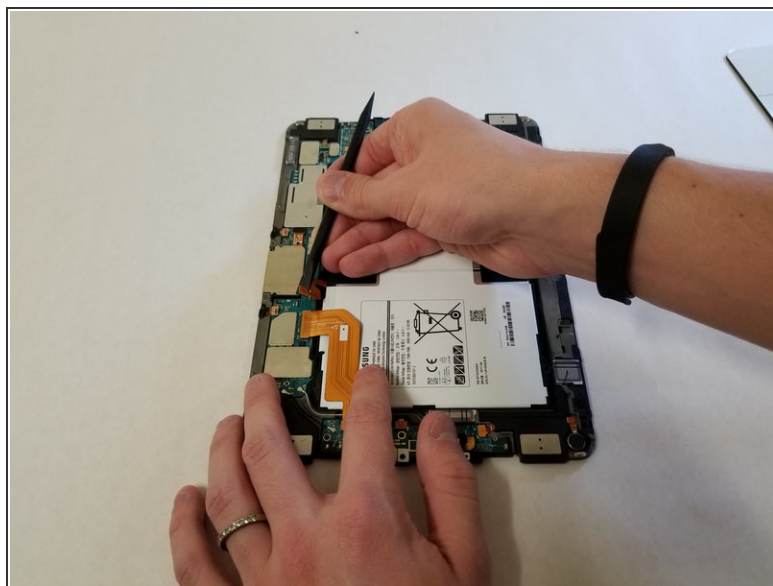
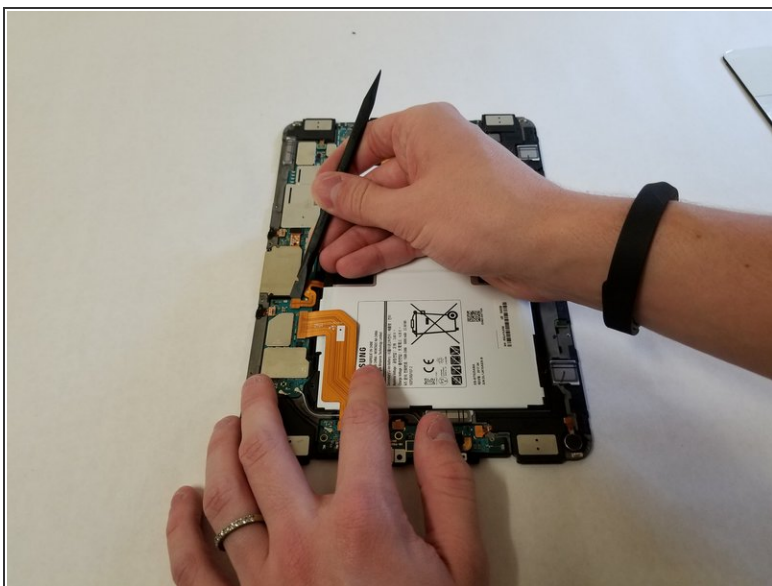
- The midframe should snap off from the device's motherboard.

Step 8



- Locate the ribbon running from the midframe and disconnect it from the motherboard with the flat end of a **spudger**.

Step 9



- Use the flat end of the **spudger** to pop off the connector between the battery and the motherboard.

Step 10



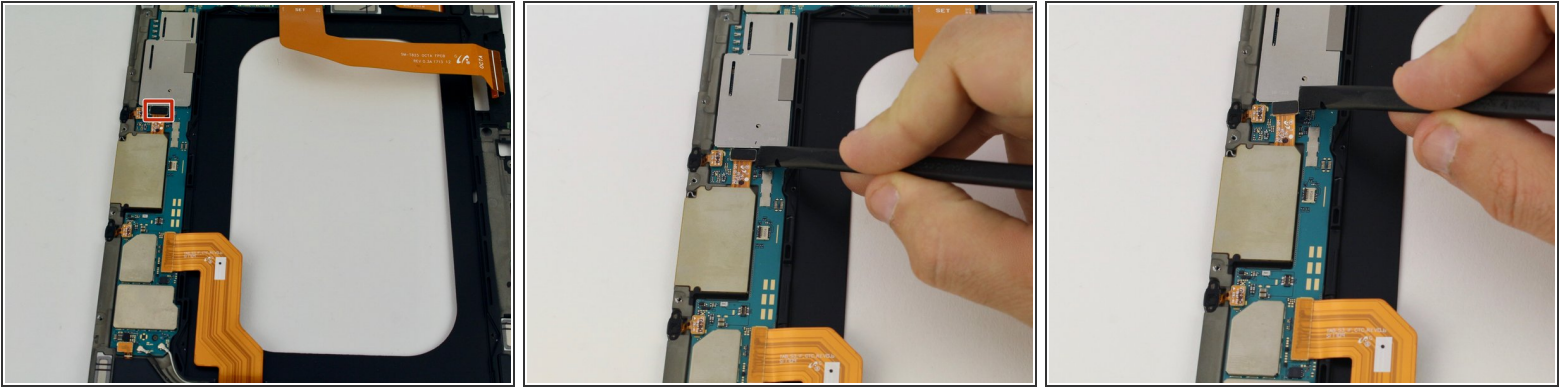
- Flip the midframe over and pop the battery out, making sure to slide it out from underneath the ribbon cables.

Step 11



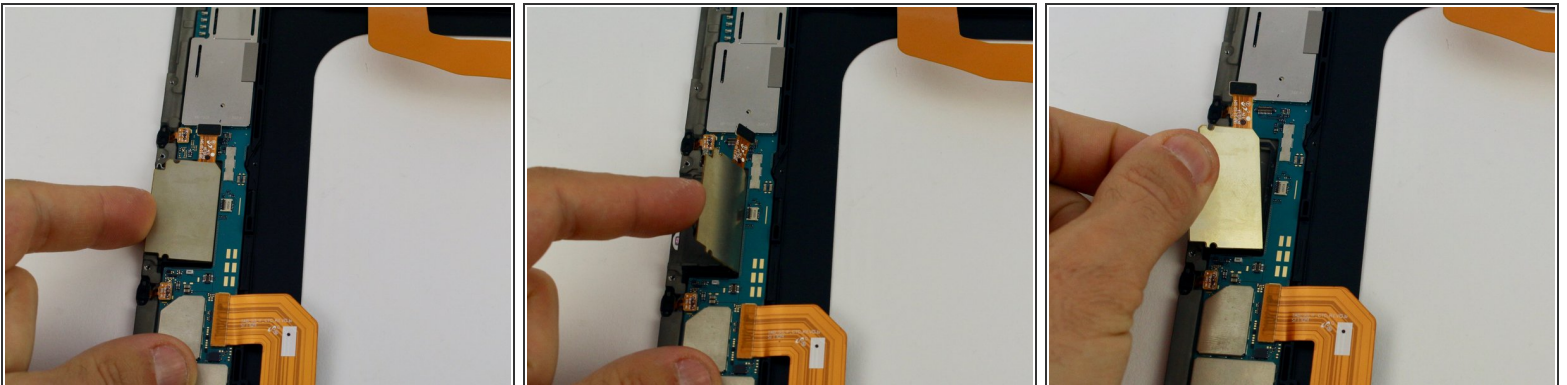
- The battery should now be removed and detached from the device.

Step 12 — Micro SD Card Reader



- Disconnect the single press fit connector located just above the Micro SD card tray on the left midframe.

Step 13



- Next pry the Micro SD card tray up from the midframe on the left with your finger.
 - ❗ There is a layer of glue around the perimeter, so prying from the left, then downward should free the card reader from its sticky spot.
- Remove the Micro SD card reader.

To reassemble your device, follow these instructions in reverse order.