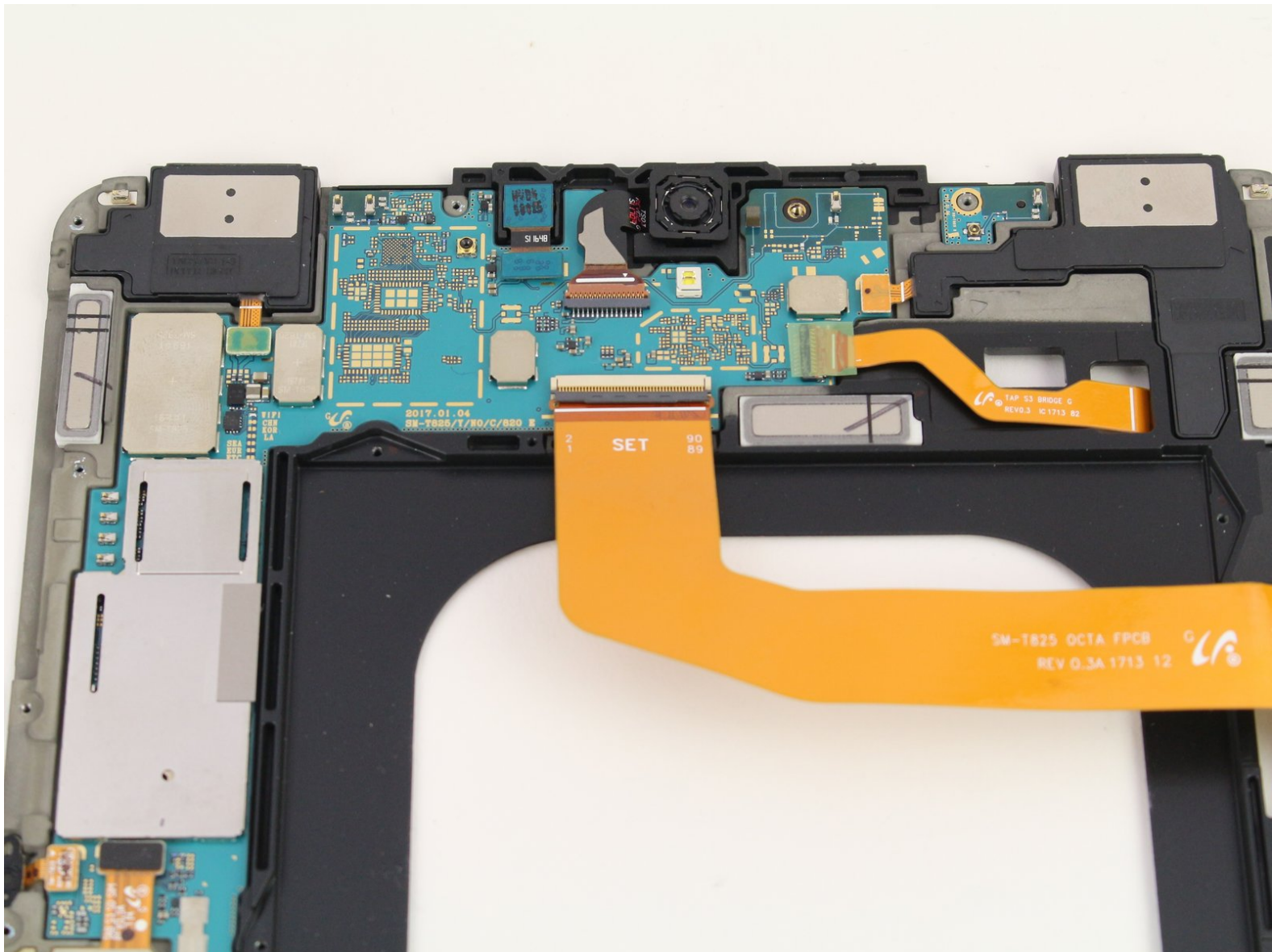




Samsung Galaxy Tab S3 Motherboard Replacement

This guide will show you how to replace your Samsung Galaxy Tab S3 motherboard, which is useful if your device won't turn on.

Written By: Sarah Westberg



This document was generated on 2019-09-21 04:56:41 PM (MST).

INTRODUCTION

The Samsung Galaxy Tab S3 motherboard replacement has multiple steps but once you have gone through the display and battery removal, the motherboard replacement is a straightforward process. Be warned that there are many connectors to undo. A malfunctioning can cause the device to not turn on, unusual visuals on the display, or if your device crashes regularly.



TOOLS:

- [Spudger](#) (1)
- [iFixit Opening Tools](#) (1)
- [Plastic Cards](#) (1)
- [iOpener](#) (1)
- [Microwave](#) (1)
- [Phillips #00 Screwdriver](#) (1)



PARTS:

- [Galaxy Tab S3 9.7 Battery](#) (1)

Step 1 — Display



- To soften the adhesive holding the tablet together, heat up the edges of the glass panel using a heated **iOpener** on the edge of the device.
 - We used two **iOpeners** to open up the tablet. The process is doable with a single **iOpener**, but would take substantially longer. Alternatively, you can use a heat gun to quickly loosen the adhesive.
 - Leave the **iOpener** on edge for two minutes.
- i** Be careful not to burn yourself while handling the hot **iOpener**. For more information on the **iOpener**, use the [iOpener Instructions Guide](#).

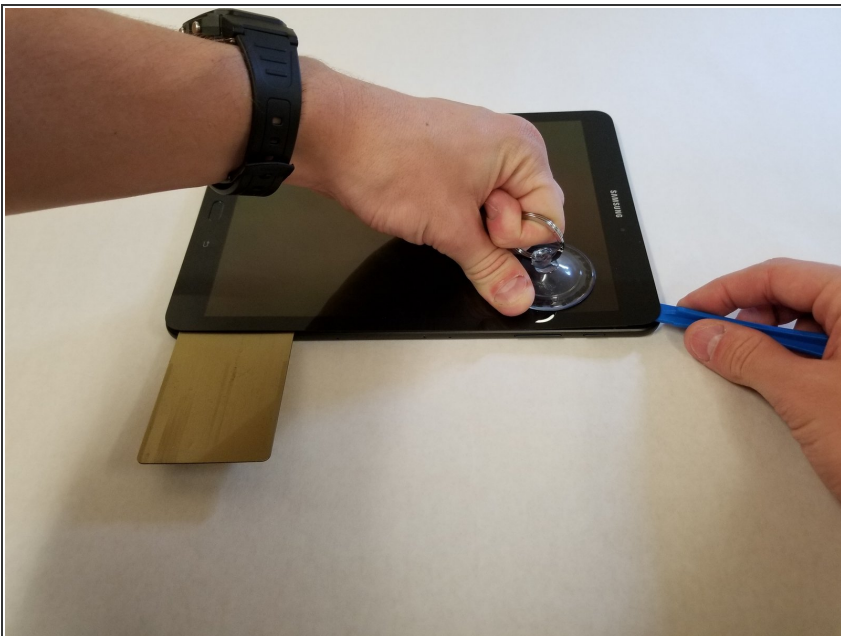
Step 2



- Place a **suction cup** near edge that you heated up with the **iOpener**.
- Press down on the **suction cup** to create a seal, and pull up with force to create a separation between the display and the midframe.
- Use an **opening tool** to split apart the glass panel from the midframe.

⚠ Be careful to not break the glass when prying from the frame.


Step 3



- As you continue along the edge using the **opening tool**, use a **plastic card** to keep the glass separate from the midframe.
- ★ You can also use multiple **opening picks** instead of a **plastic card**.

Step 4



 As you remove the glass panel, be careful not to tear the ribbon connecting the motherboard to the display.

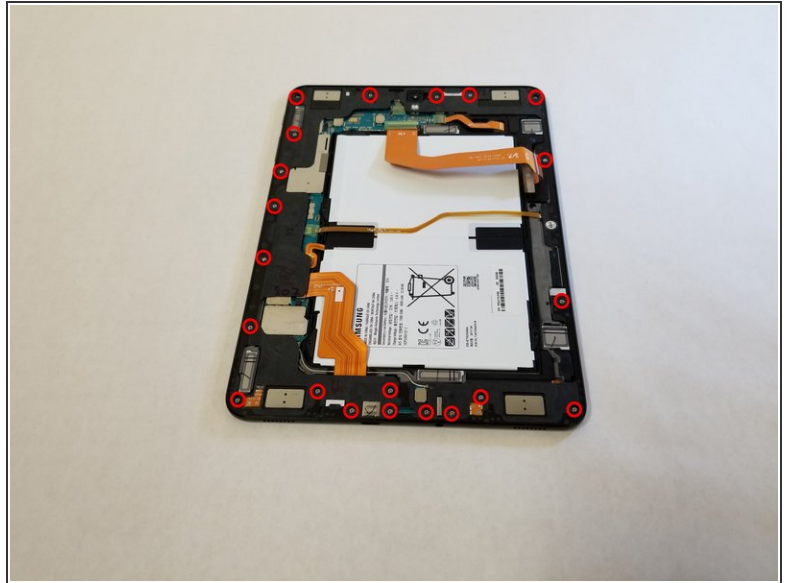
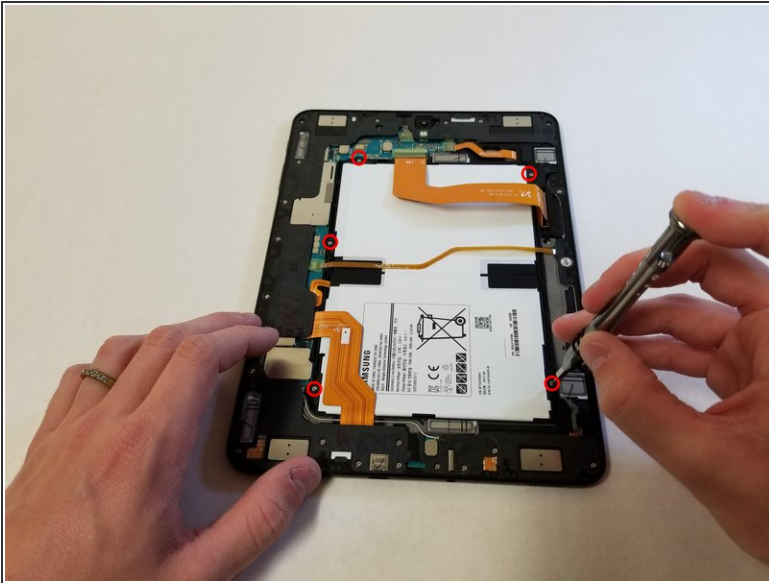
- Pull off the glass panel using the **suction cup**.
- Carefully disconnect the ribbon connecting the display assembly to the motherboard. You can disconnect this ribbon from either end.

Step 5



- Repeat steps 3 through 7 to remove the rear glass panel on the opposite side of the device.

Step 6 — Battery



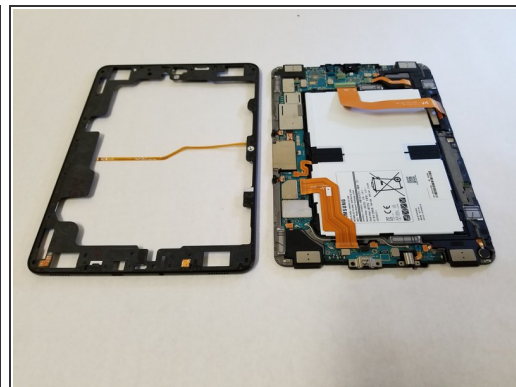
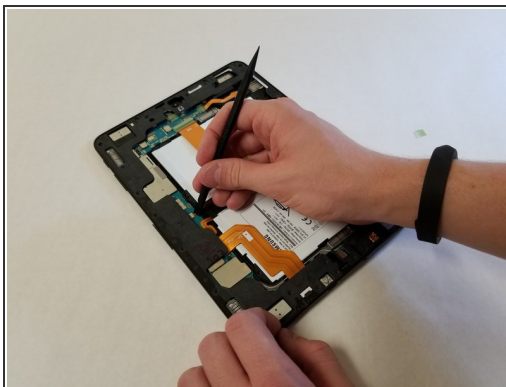
- Use a Phillips #000 screwdriver to unscrew the five screws securing the battery, and the twenty-two screws surrounding the midframe.

Step 7



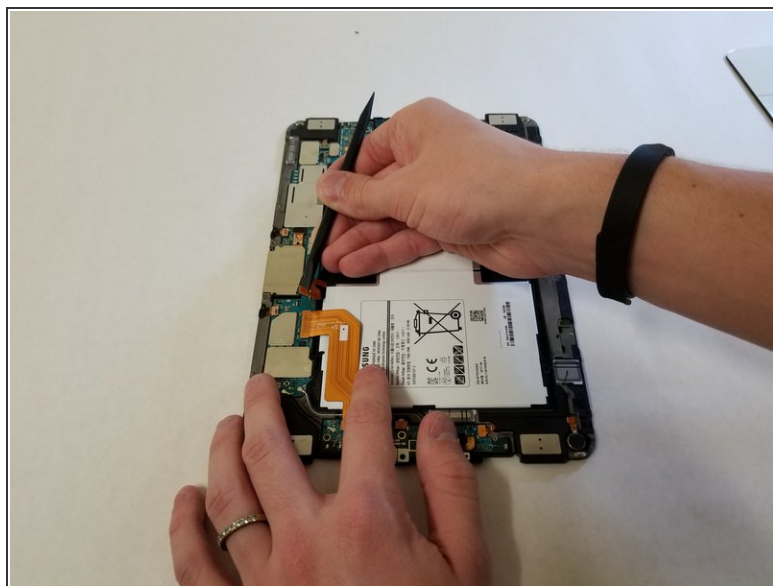
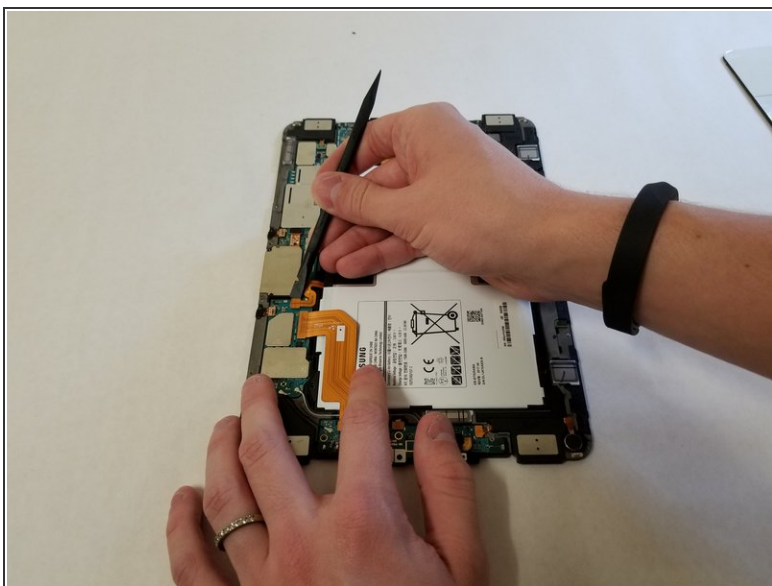
- The midframe should snap off from the device's motherboard.

Step 8



- Locate the ribbon running from the midframe and disconnect it from the motherboard with the flat end of a **spudger**.

Step 9



- Use the flat end of the **spudger** to pop off the connector between the battery and the motherboard.

Step 10



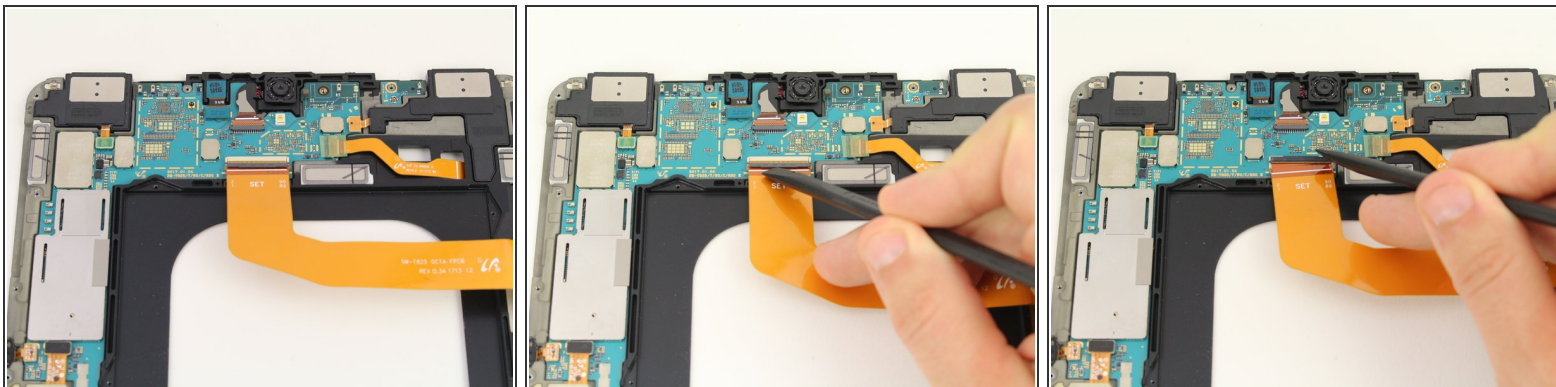
- Flip the midframe over and pop the battery out, making sure to slide it out from underneath the ribbon cables.

Step 11



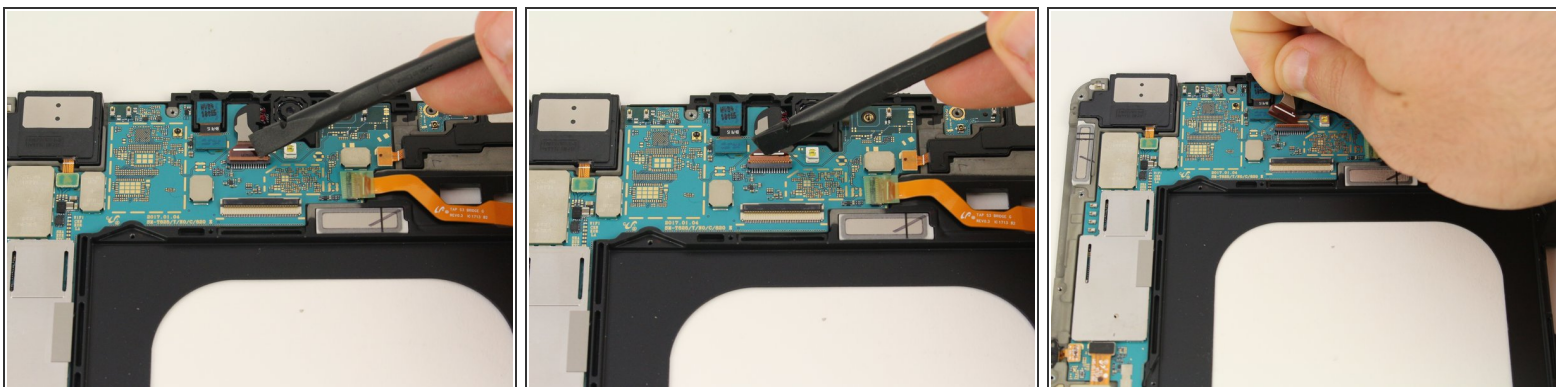
- The battery should now be removed and detached from the device.

Step 12 — Motherboard



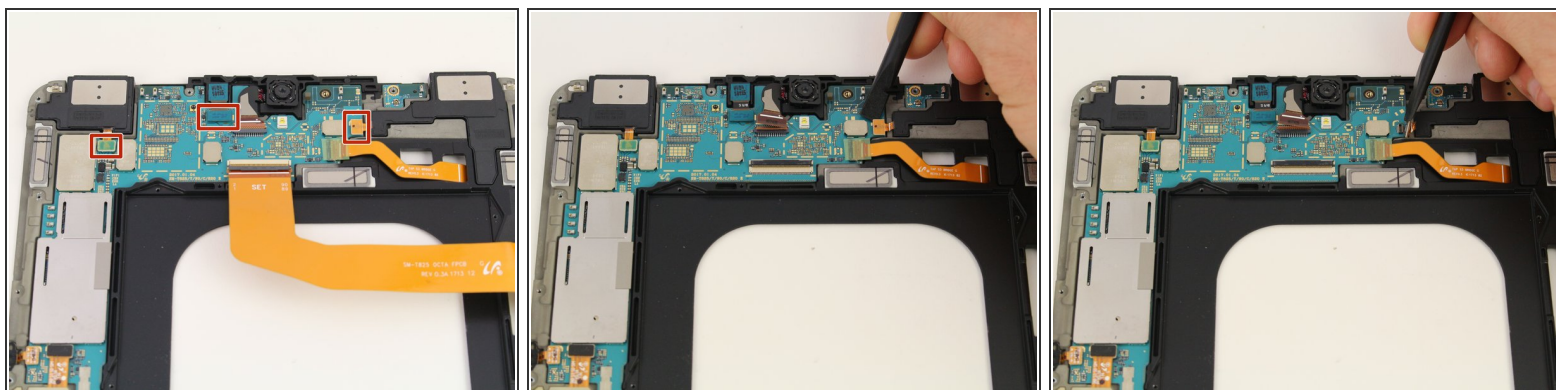
- Use the black nylon spudger to lift the gray ZIF connector up and pull out the orange ribbon cable below the camera.

Step 13



- Remove the ribbon cable for the front facing camera after popping the red ZIF connector bar up with a spudger.

Step 14



- Disconnect the three press fit connectors in the top section of the midframe by prying upwards with the spudger.

Step 15



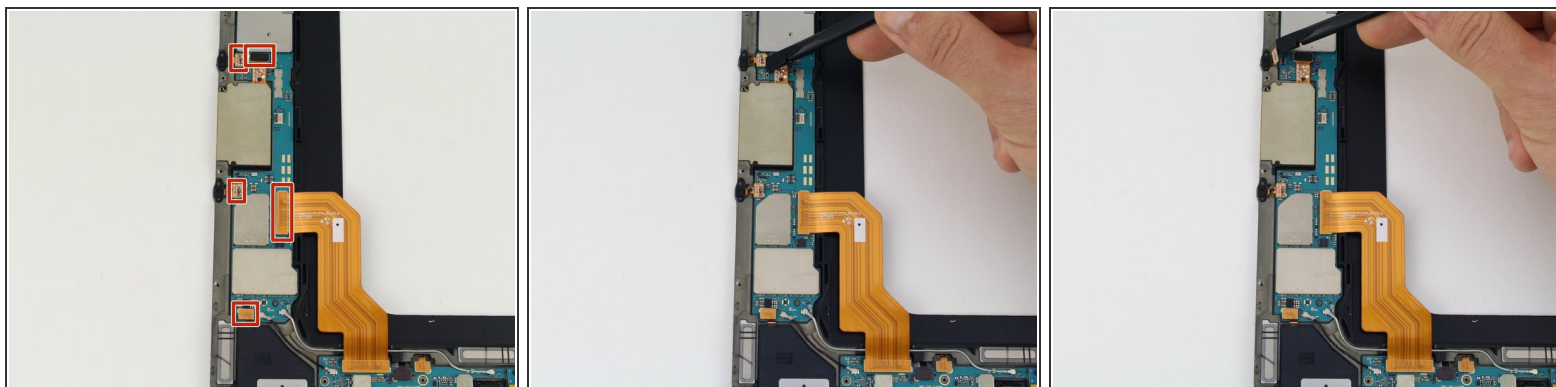
- Pull back the green tape on the upper section of the motherboard with your tweezers to reveal the ZIF connector below.

Step 16



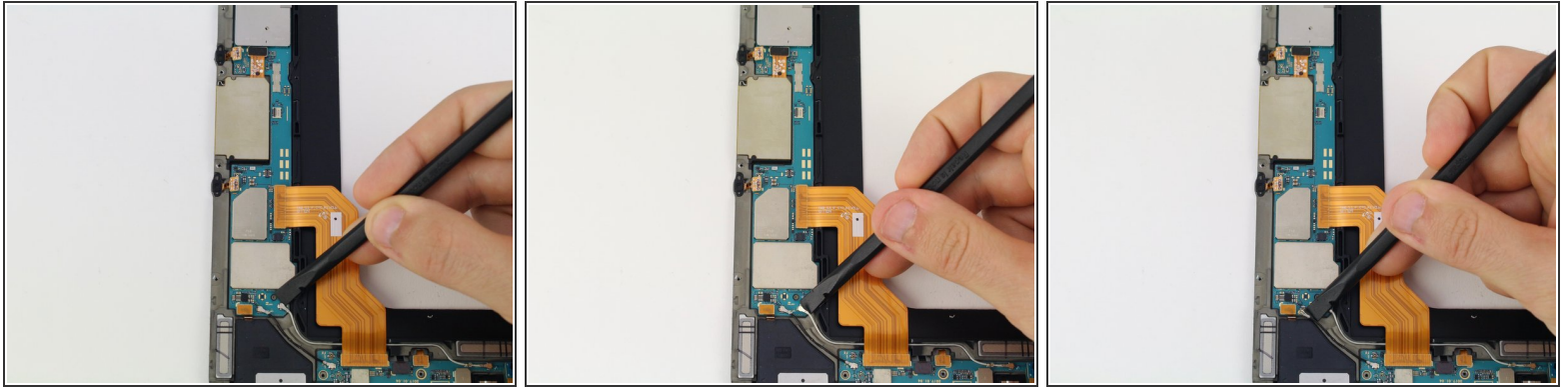
- Push the red bar up from the ZIF connector with the spudger and pull the orange, touchpad ribbon cable out.

Step 17



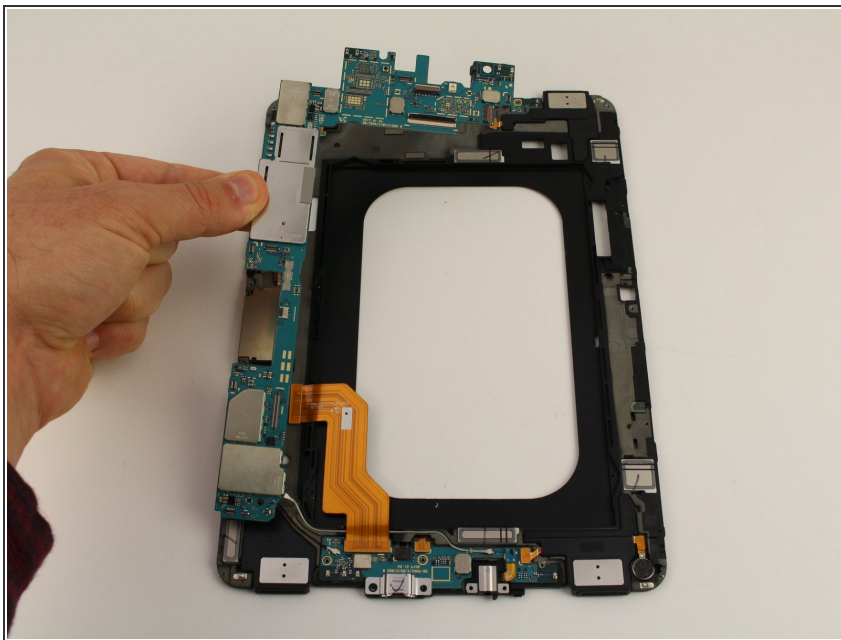
- Use the spudger to disconnect five more press fit connectors on the left side of the motherboard by prying upwards.

Step 18



- Pop the coaxial antenna cables off from the motherboard with the spudger.

Step 19



- Using your fingers, move all the cables aside and wiggle the motherboard free.

To reassemble your device, follow these instructions in reverse order.