



# Samsung Galaxy Tab S3 Rear Facing Camera Camera Replacement

How to replace the rear camera modules on the Samsung Galaxy Tab S3.

Written By: Zachary Fucini



## INTRODUCTION

If you have damaged your Galaxy Tab S3's camera sensor or image stabilization, you will need to replace the camera module. This guide will show you how to properly remove and replace the cameras on the rear of the device.

If you notice that the camera lens is scratched, you will need to replace either the [display assembly](#) (front camera) or the [rear glass panel](#) (rear camera). A scratch on the camera's outer lens does not constitute damage to the module itself.



### TOOLS:

- [Phillips #000 Screwdriver](#) (1)
- [iOpener](#) (1)
- [Microwave](#) (1)
- [iFixit Opening Tools](#) (1)
- [Plastic Cards](#) (1)
- [Spudger](#) (1)



### PARTS:

- [Galaxy Tab S3 9.7 Rear Camera](#) (1)

## Step 1 — Display



- To soften the adhesive holding the tablet together, heat up the edges of the glass panel using a heated **iOpener** on the edge of the device.
  - We used two **iOpeners** to open up the tablet. The process is doable with a single **iOpener**, but would take substantially longer. Alternatively, you can use a heat gun to quickly loosen the adhesive.
  - Leave the **iOpener** on edge for two minutes.
- i** Be careful not to burn yourself while handling the hot **iOpener**. For more information on the **iOpener**, use the [iOpener Instructions Guide](#).

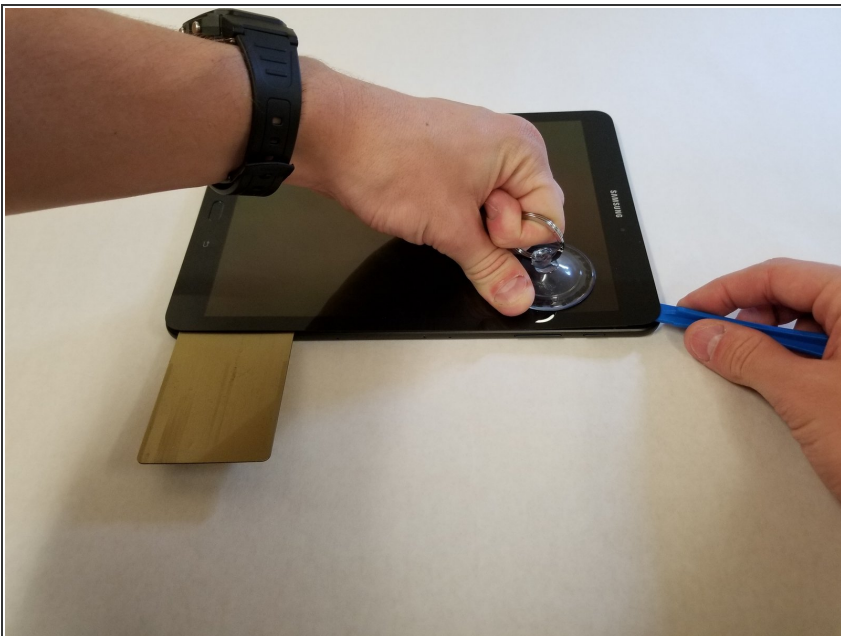
## Step 2



- Place a **suction cup** near edge that you heated up with the **iOpener**.
- Press down on the **suction cup** to create a seal, and pull up with force to create a separation between the display and the midframe.
- Use an **opening tool** to split apart the glass panel from the midframe.

⚠ Be careful to not break the glass when prying from the frame.

## Step 3




- As you continue along the edge using the **opening tool**, use a **plastic card** to keep the glass separate from the midframe.
- ★ You can also use multiple **opening picks** instead of a **plastic card**.



## Step 4



 As you remove the glass panel, be careful not to tear the ribbon connecting the motherboard to the display.

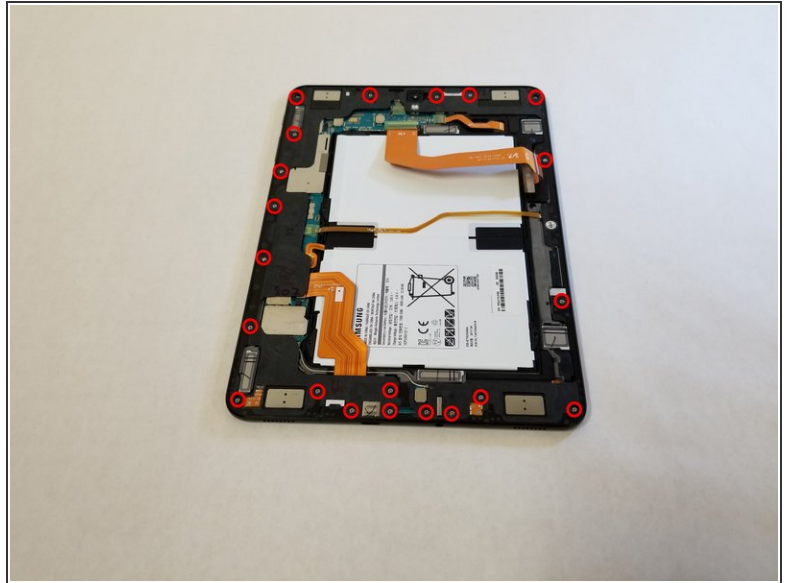
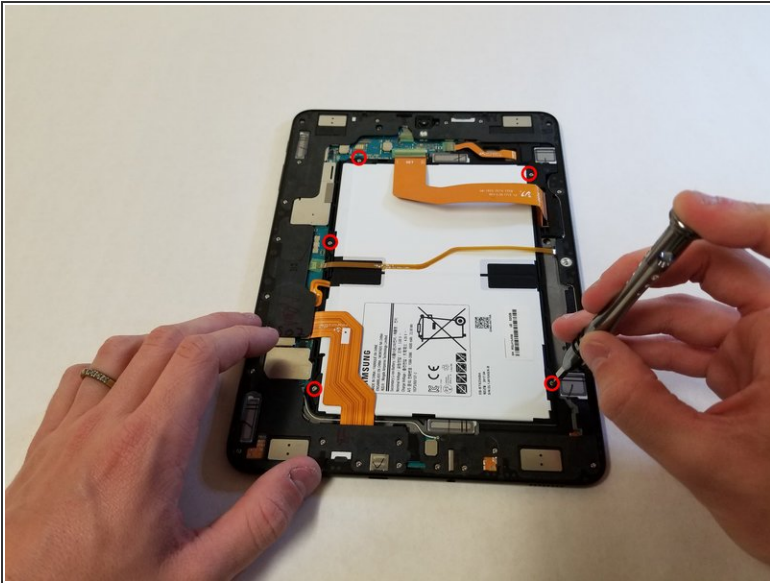
- Pull off the glass panel using the **suction cup**.
- Carefully disconnect the ribbon connecting the display assembly to the motherboard. You can disconnect this ribbon from either end.

## Step 5



- Repeat steps 3 through 7 to remove the rear glass panel on the opposite side of the device.

## Step 6 — Battery



- Use a Phillips #000 screwdriver to unscrew the five screws securing the battery, and the twenty-two screws surrounding the midframe.

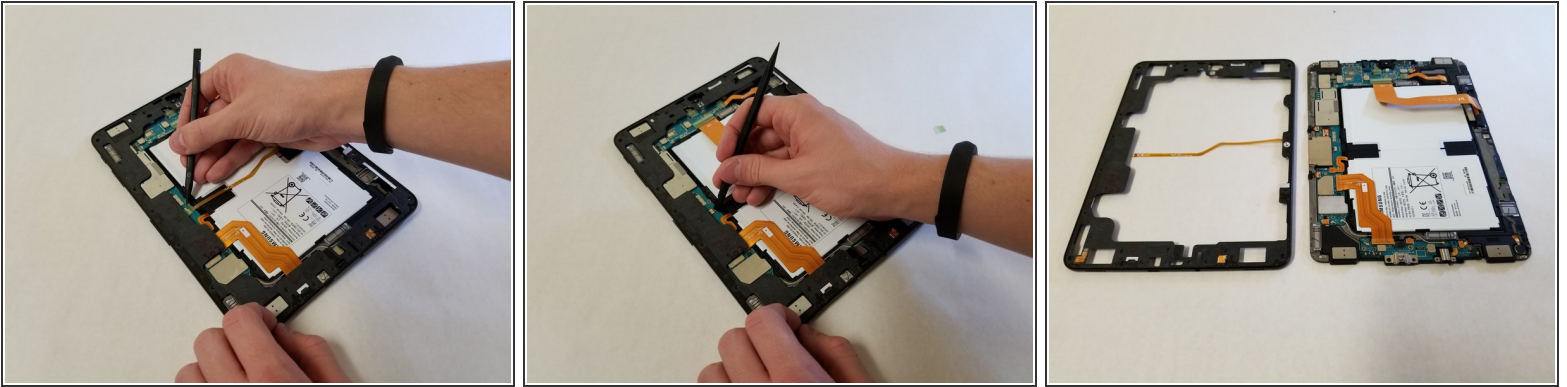
## Step 7



- The midframe should snap off from the device's motherboard.

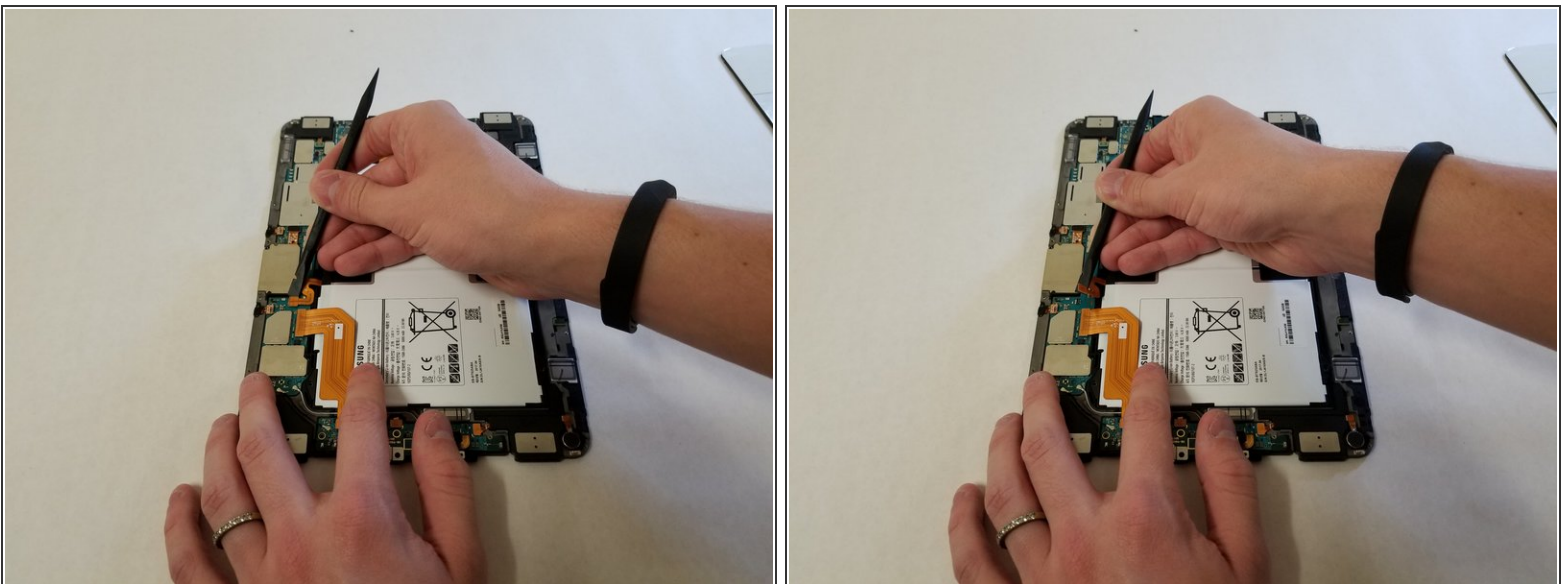


## Step 8



- Locate the ribbon running from the midframe and disconnect it from the motherboard with the flat end of a **spudger**.

## Step 9



- Use the flat end of the **spudger** to pop off the connector between the battery and the motherboard.

## Step 10



- Flip the midframe over and pop the battery out, making sure to slide it out from underneath the ribbon cables.

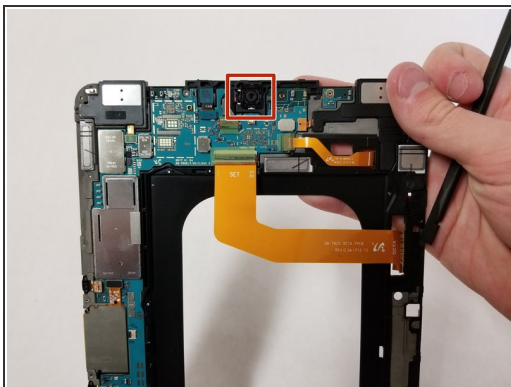
## Step 11



- The battery should now be removed and detached from the device.

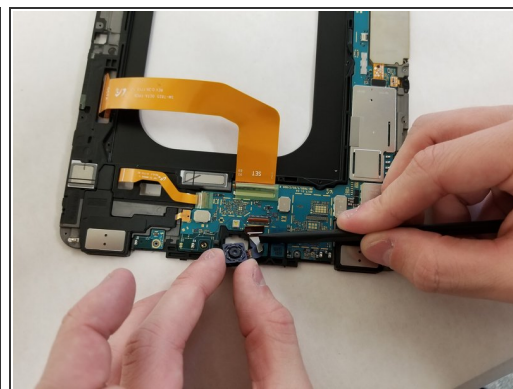
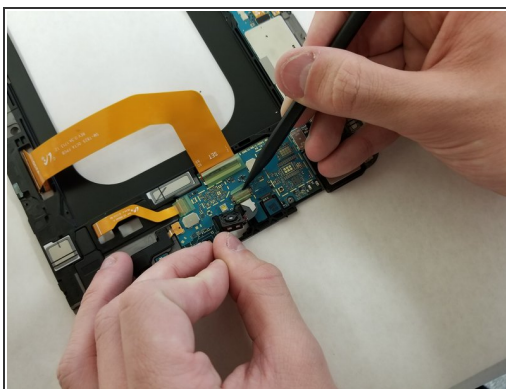
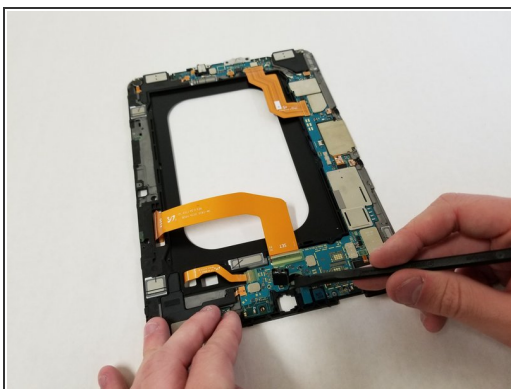


## Step 12 — Rear Facing Camera



- Flip over the device, and carefully push the Rear Camera out of its framing using the **spudger**.

## Step 13



- Flip the motherboard over and locate the ribbon attaching the Rear Camera to the motherboard. Carefully pop off the ribbon from the logic board with the flat end of the **spudger**.

## Step 14



- Remove the Rear Camera from the device.

To reassemble your device, follow these instructions in reverse order. If you have removed too much adhesive, you may need to apply more during the reassembly process.