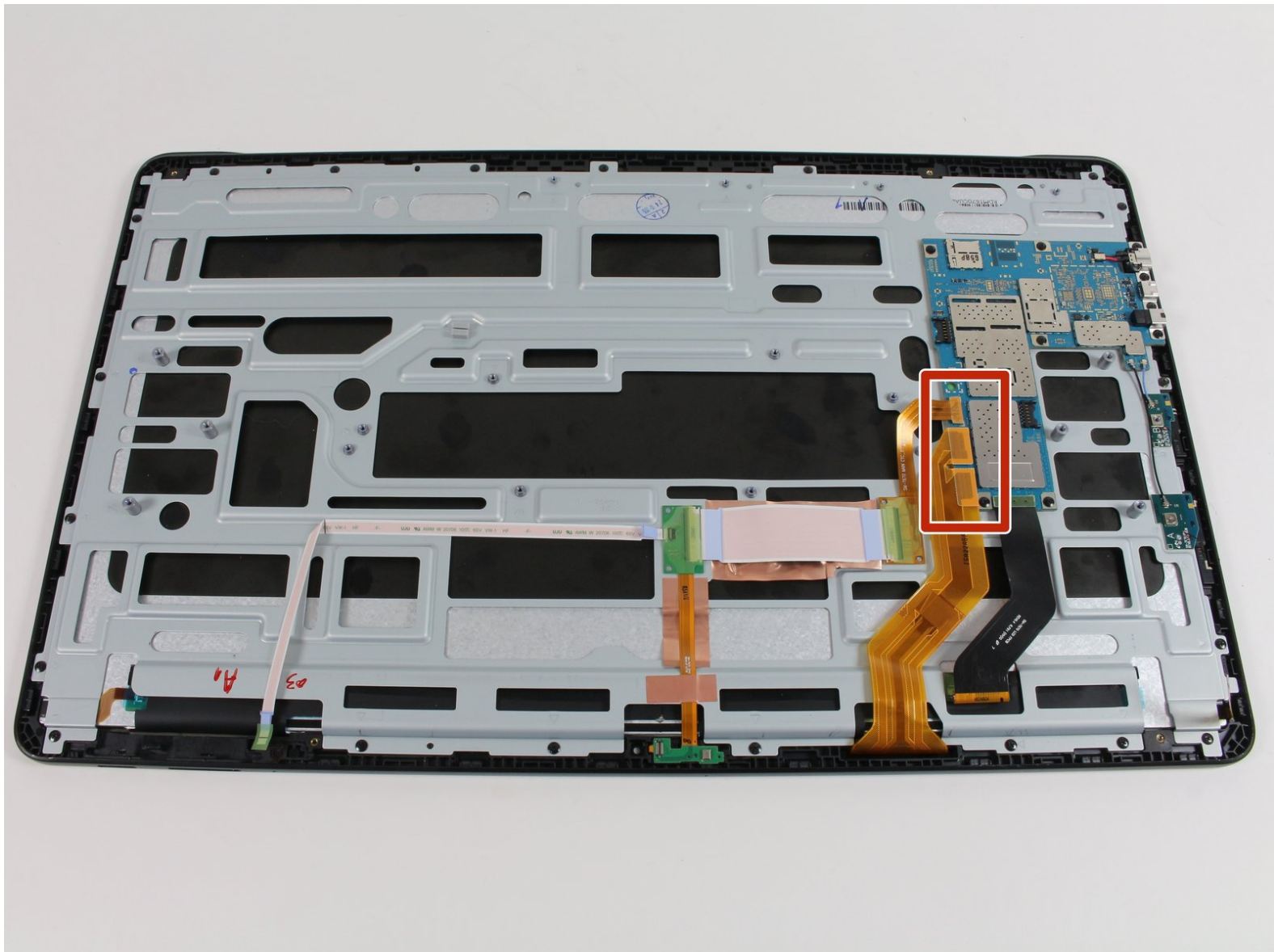




Samsung Galaxy View Motherboard Replacement

This guide will show you how to remove the motherboard from the Samsung Galaxy View.

Written By: Amberley Powell



INTRODUCTION

Replacement of the motherboard requires the removal of the kickstand, battery, and speakers. The battery will be removed for user and device safety reasons.

TOOLS:

- [iFixit Opening Tools](#) (1)
 - [Metal Spudger](#) (1)
 - [Phillips #0 Screwdriver](#) (1)
 - [Heavy-Duty Spudger](#) (1)
 - [Phillips #00 Screwdriver](#) (1)
-

Step 1 — Kickstand



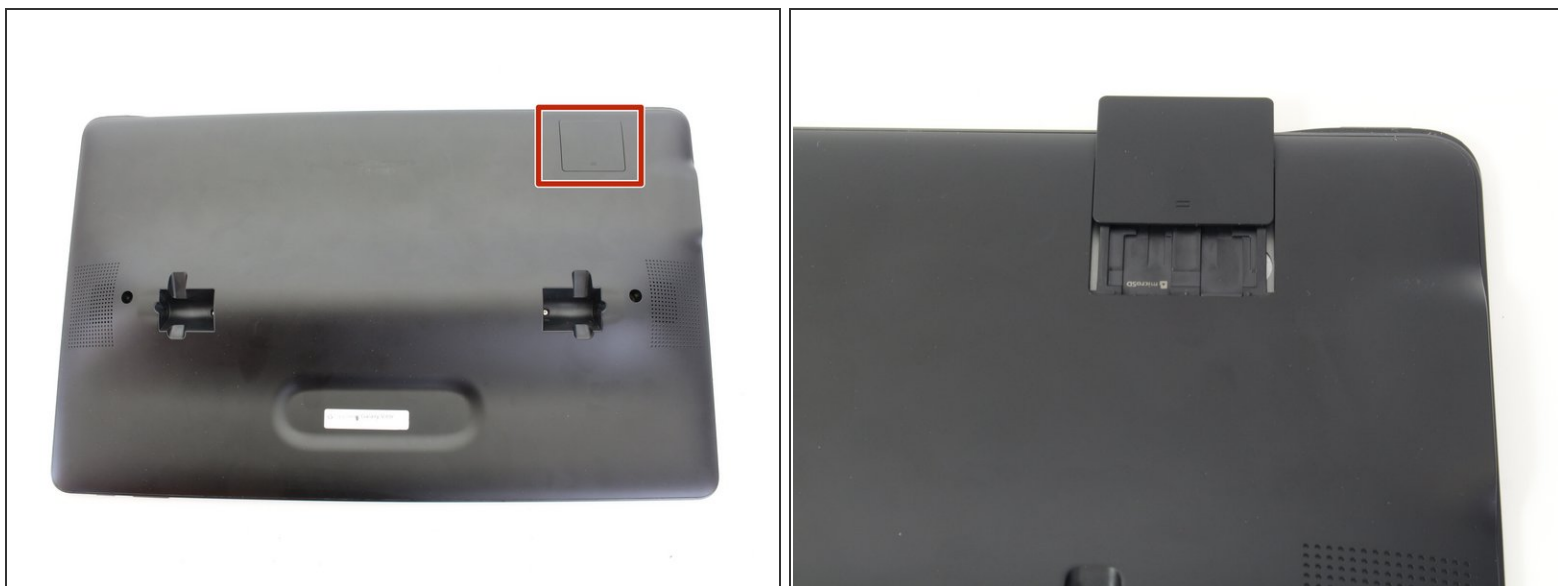
- Place the device on a hard flat surface with its screen facing downwards.
- Rotate the the kickstand so that the handle grip hole is up in the air and not touching the back of the tablet.

Step 2



- Stick the pointy end of the spudger into the circular opening of the leftmost metallic latch.
- With the spudger still inserted, pry the spudger to the right pushing the latch opening along with it.
- Once the latch is moved to the right, pull up on the left side of the kickstand, releasing it from the back of the tablet.
- Repeat the previous steps for the rightmost latch, and then lift the kickstand off the back of the tablet.

Step 3 — Battery



- Check the device is completely turned off.
- Slide open the SD compartment tab, and remove the SD card to ensure all data is saved.

Step 4




- Remove the 4 screws (4 mm in length) using the Phillips #0 screwdriver.

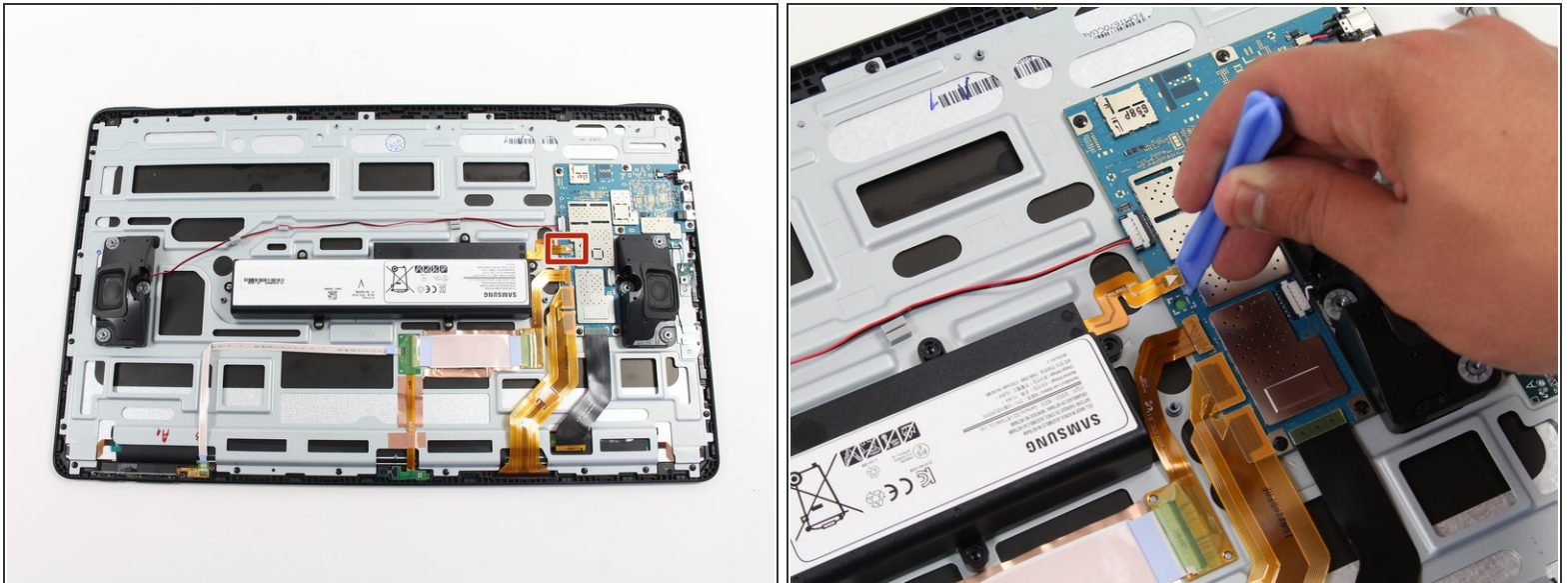
Step 5



- Insert the plastic opening tool between the seam of the back panel and the front casing to create an initial opening.
- Insert the metal spudger within the opening.
- Move the metal spudger down the seam, prying the back panel open as you go.
- Once a large enough opening is made, pry the entire back panel off with your hand.

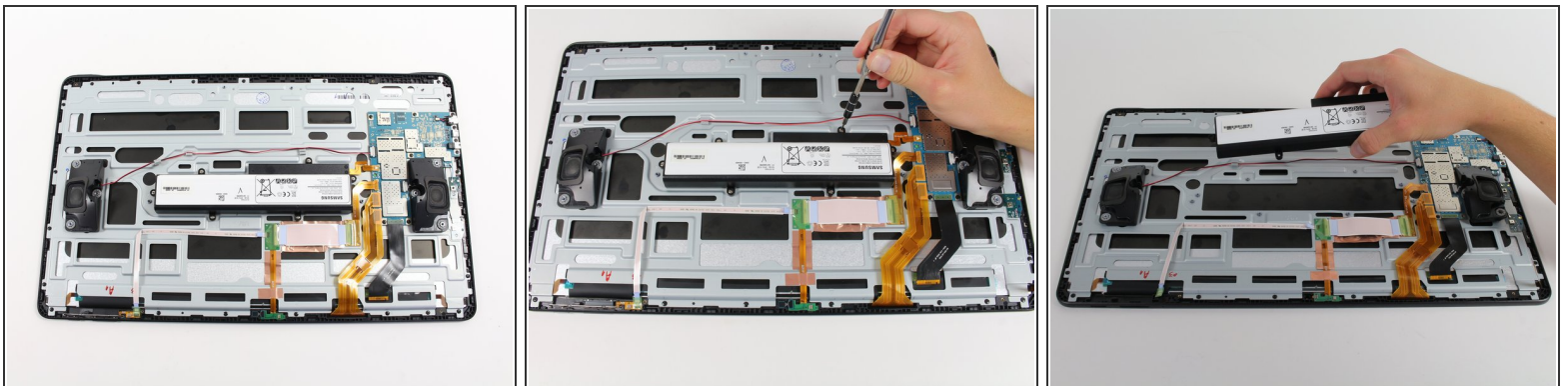
 You will hear loud popping from the magnetized latches. This is not causing damage to the device and will require some force to open.

Step 6



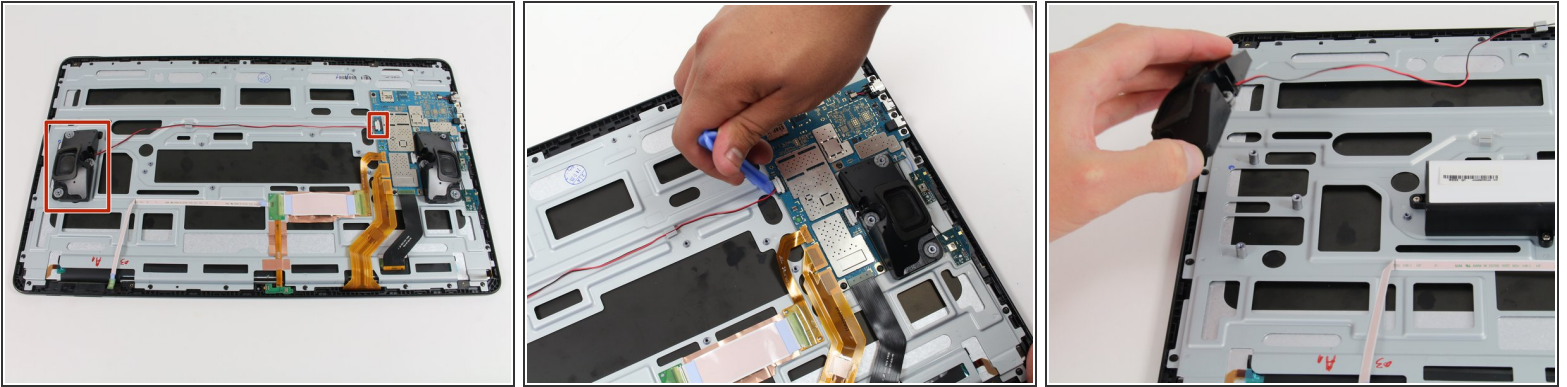
- Using the plastic opening tool, lift off the orange press-fit connector (marked with a white arrow-head) where it attaches to the motherboard.

Step 7



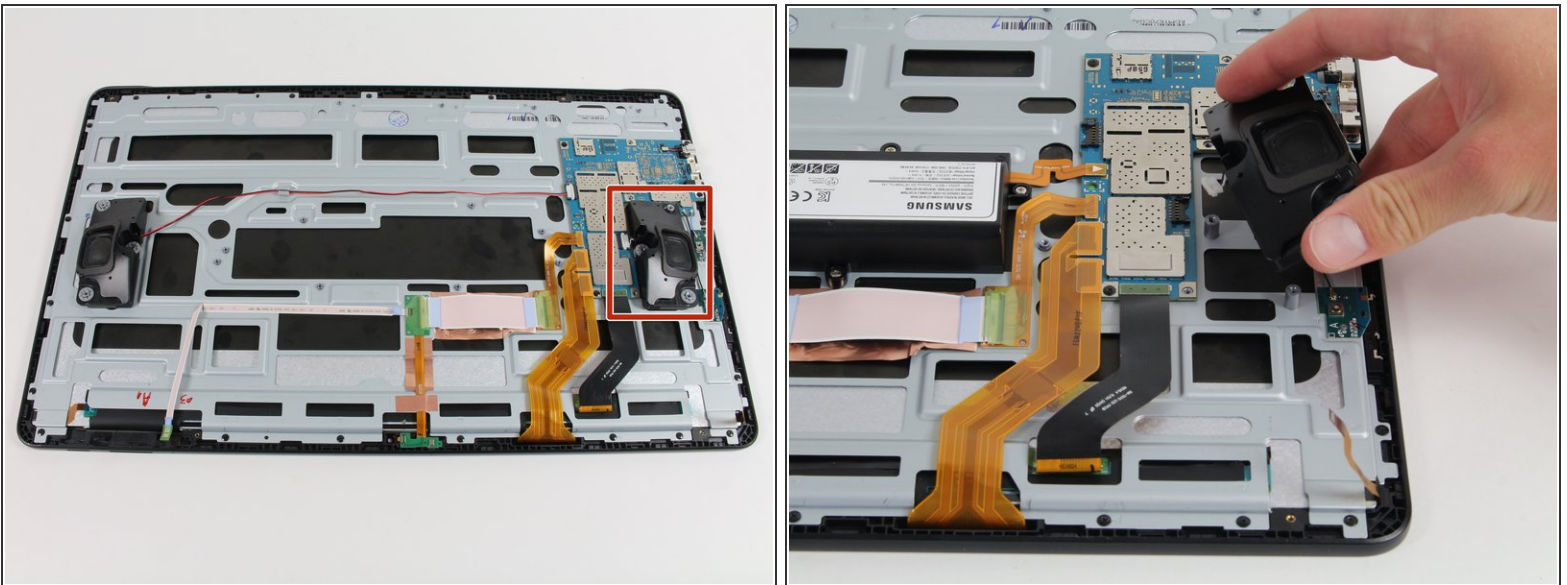
- Remove the 6 screws (4 mm in length) using the Phillips #0 screwdriver.
- Remove the battery from the device.

Step 8 — Speakers



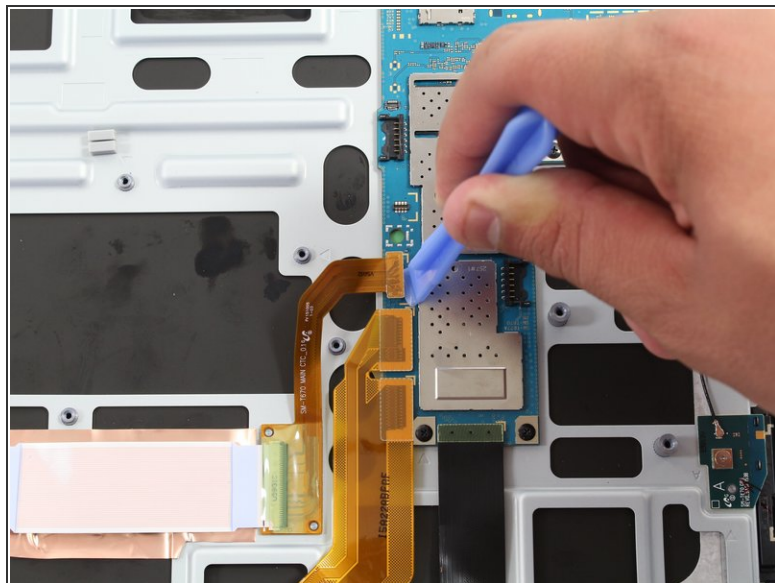
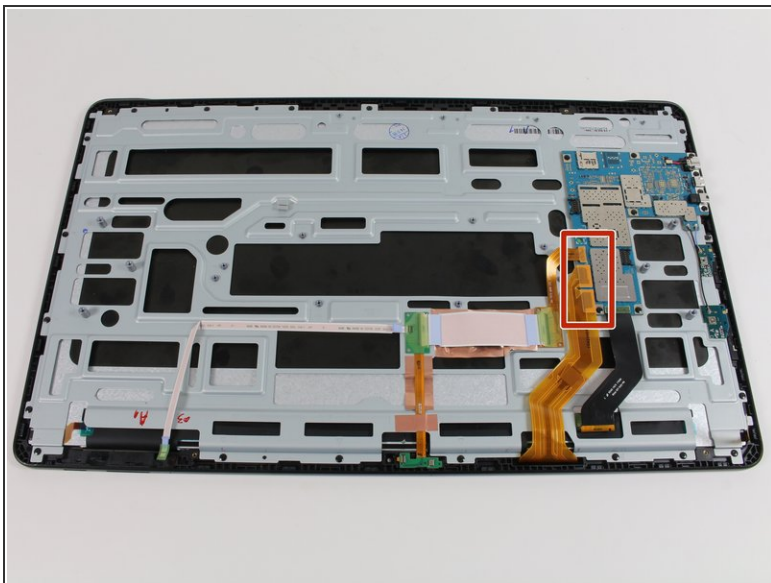
- Use the plastic opening tool to disconnect the white bundled cable connector that links the left speaker to the motherboard via a red wire.
- Remove the left speaker by gripping it with your hand and lifting it off of the pegs.

Step 9



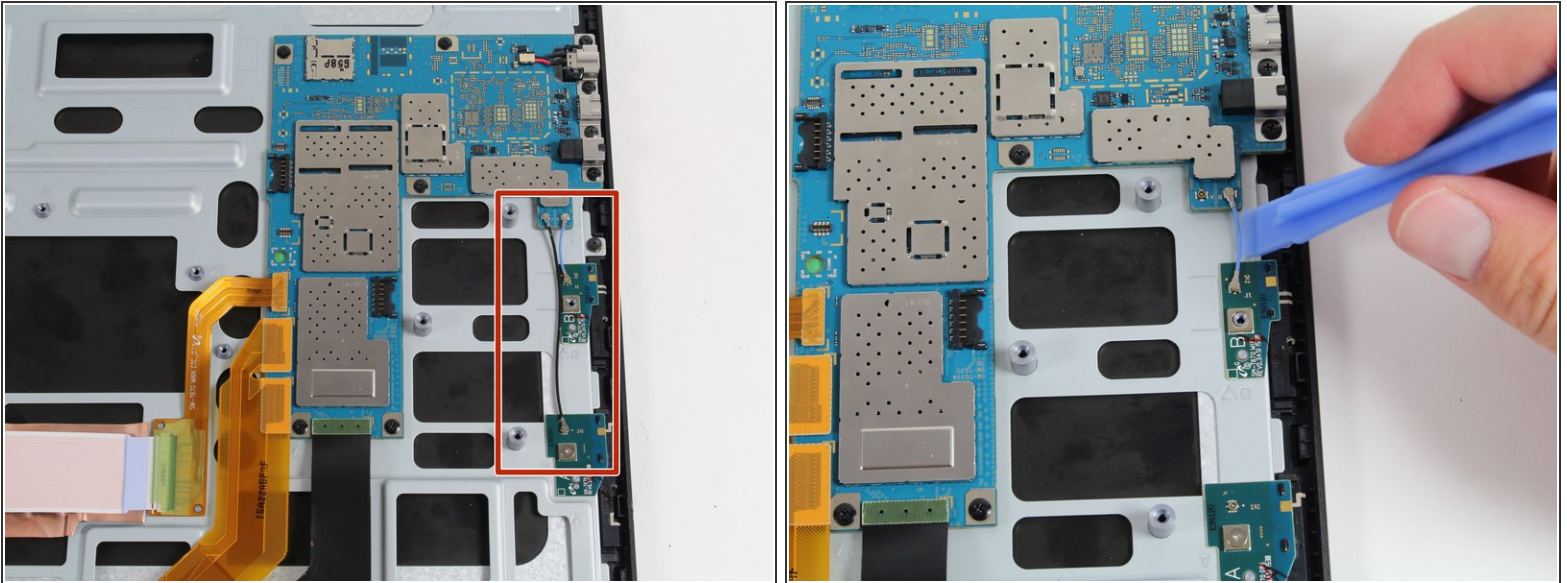
- Remove the right speaker by gripping it with your hand and pulling it straight up and off of the pegs.
- ⓘ The white bundled wire connector, and the red wire attaching the speaker to the motherboard, will come off when lifting the speaker.

Step 10 — Motherboard



- Insert the plastic opening tool beneath the orange press-fit connector attached to the bottom left side of the motherboard and use a leverage motion to pry the connector from the board.
- Repeat the above step for the other two orange press-fit connectors attached on the bottom left side of the motherboard.

Step 11



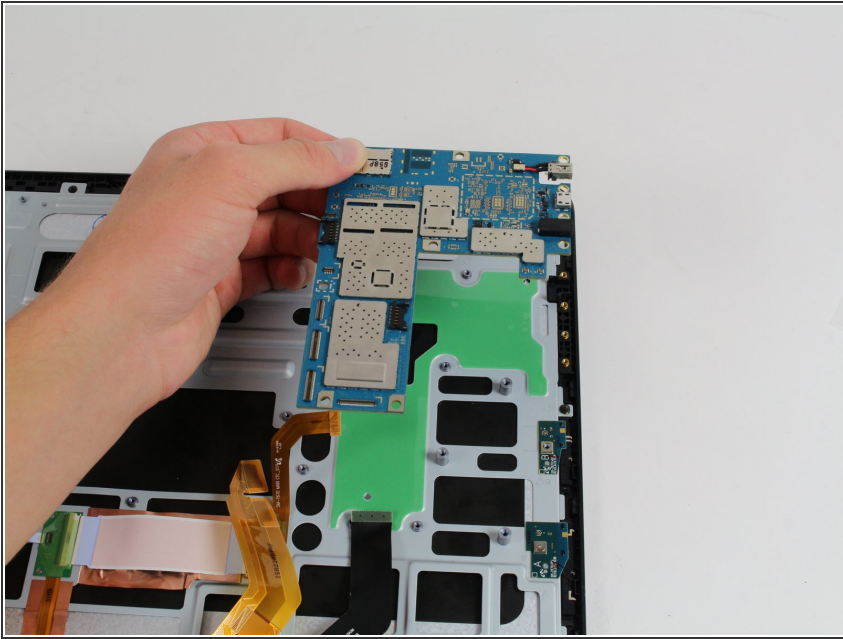
- Use the plastic opening tool to pry up on the blue antenna cable connector near the right edge of the motherboard.
- Repeat the above for the black antenna cable connector positioned next to the blue wire.

Step 12



- Use a Phillips #00 screwdriver to remove the nine 3 mm screws around the motherboard.
- ⓘ There is a metal bracket beneath four of the screws on the right side of motherboard. This bracket will also be removed during this step.

Step 13



- Lift the motherboard straight up to remove it from the device.

To reassemble your device, follow these instructions in reverse order.