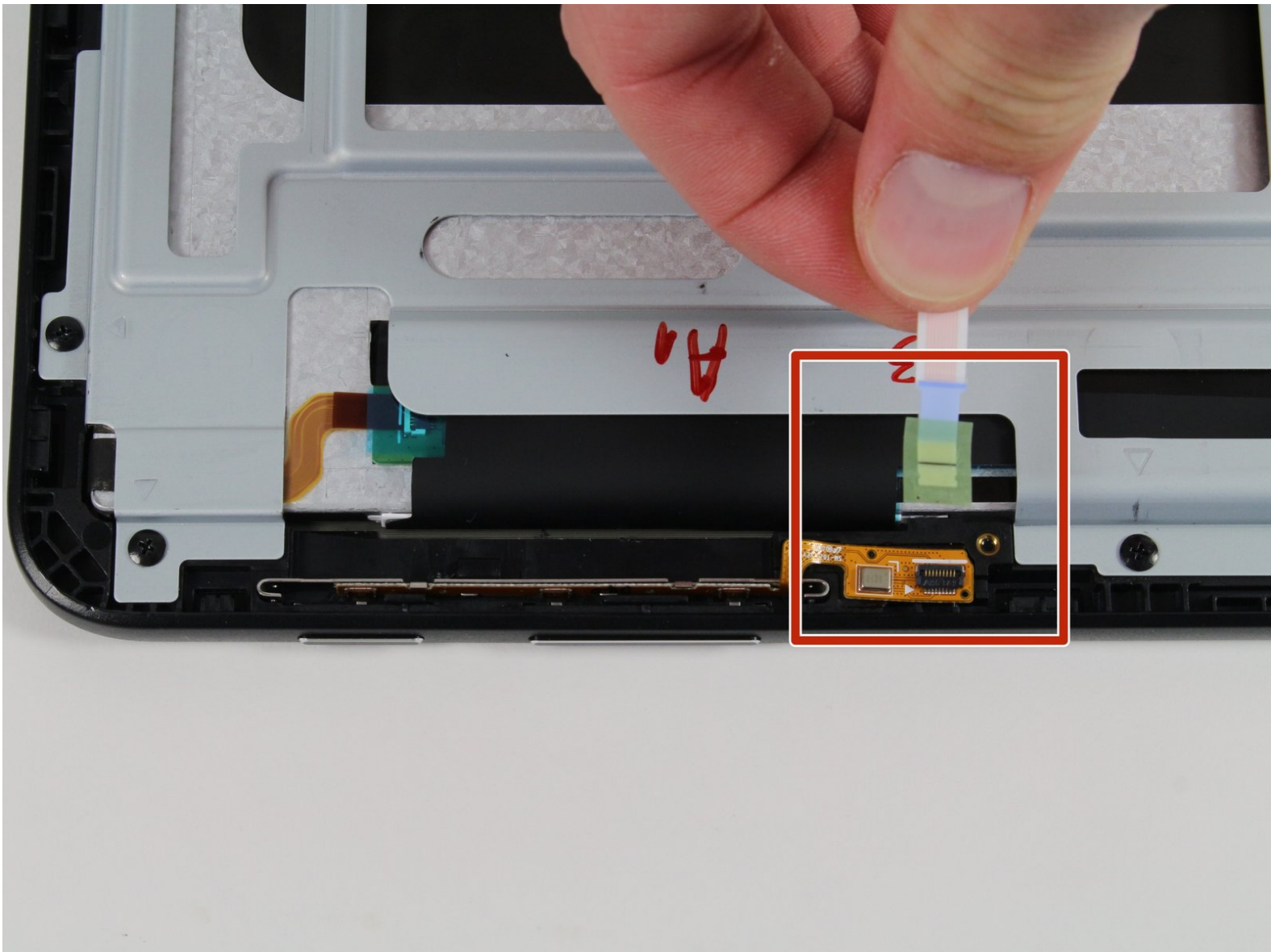




Samsung Galaxy View Sound and Power Buttons Replacement

This guide will show you how to replace the physical sound and power buttons on the side of your Samsung Galaxy View.

Written By: Amberley Powell



INTRODUCTION

Replacement of the power and sound buttons requires the removal of the kickstand and opening the device. The battery will be removed for user and device safety reasons.

TOOLS:

- [Heavy-Duty Spudger](#) (1)
 - [Metal Spudger](#) (1)
 - [Phillips #0 Screwdriver](#) (1)
 - [Phillips #00 Screwdriver](#) (1)
 - [Tweezers](#) (1)
 - [iFixit Opening Tools](#) (1)
-

Step 1 — Kickstand



- Place the device on a hard flat surface with its screen facing downwards.
- Rotate the the kickstand so that the handle grip hole is up in the air and not touching the back of the tablet.

Step 2



- Stick the pointy end of the spudger into the circular opening of the leftmost metallic latch.
- With the spudger still inserted, pry the spudger to the right pushing the latch opening along with it.
- Once the latch is moved to the right, pull up on the left side of the kickstand, releasing it from the back of the tablet.
- Repeat the previous steps for the rightmost latch, and then lift the kickstand off the back of the tablet.

Step 3 — Battery



- Check the device is completely turned off.
- Slide open the SD compartment tab, and remove the SD card to ensure all data is saved.

Step 4




- Remove the 4 screws (4 mm in length) using the Phillips #0 screwdriver.

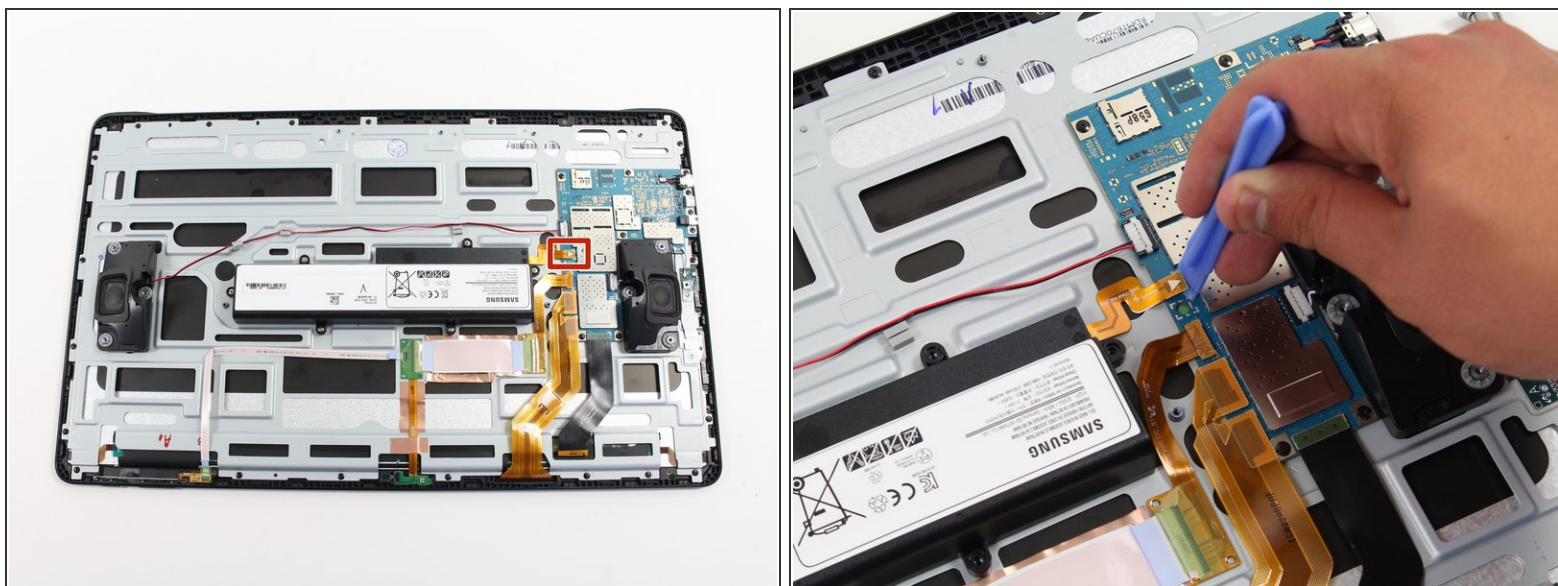
Step 5



- Insert the plastic opening tool between the seam of the back panel and the front casing to create an initial opening.
- Insert the metal spudger within the opening.
- Move the metal spudger down the seam, prying the back panel open as you go.
- Once a large enough opening is made, pry the entire back panel off with your hand.

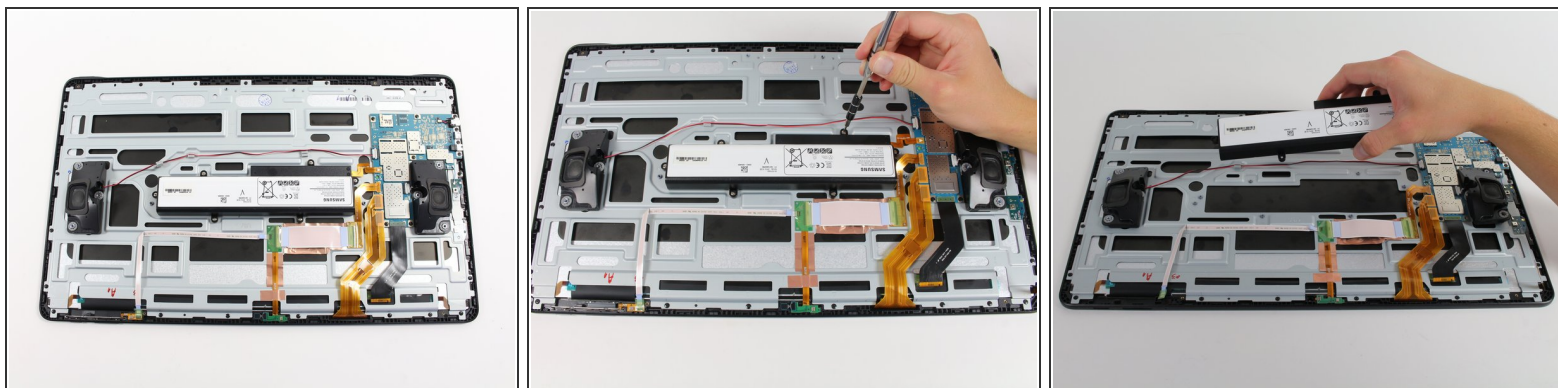
 You will hear loud popping from the magnetized latches. This is not causing damage to the device and will require some force to open.

Step 6



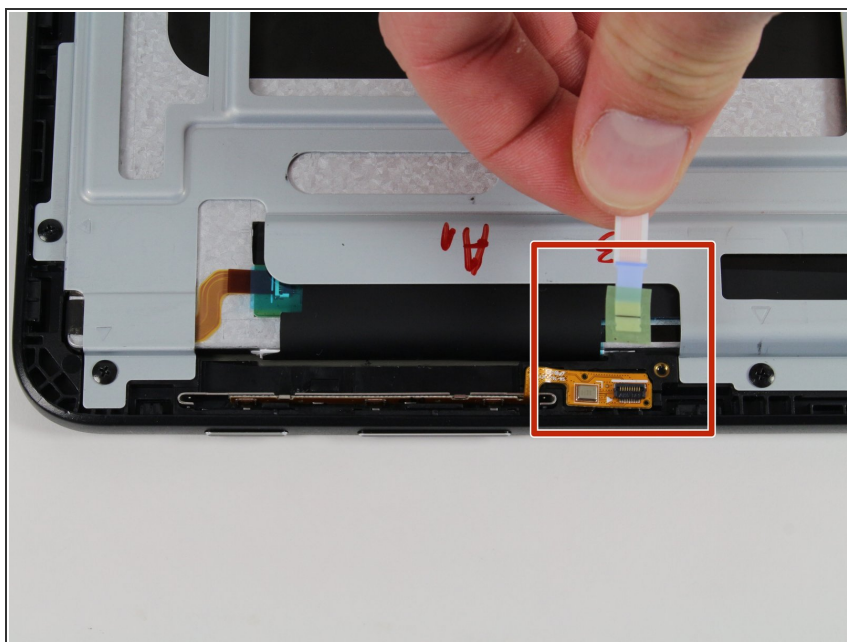
- Using the plastic opening tool, lift off the orange press-fit connector (marked with a white arrow-head) where it attaches to the motherboard.

Step 7



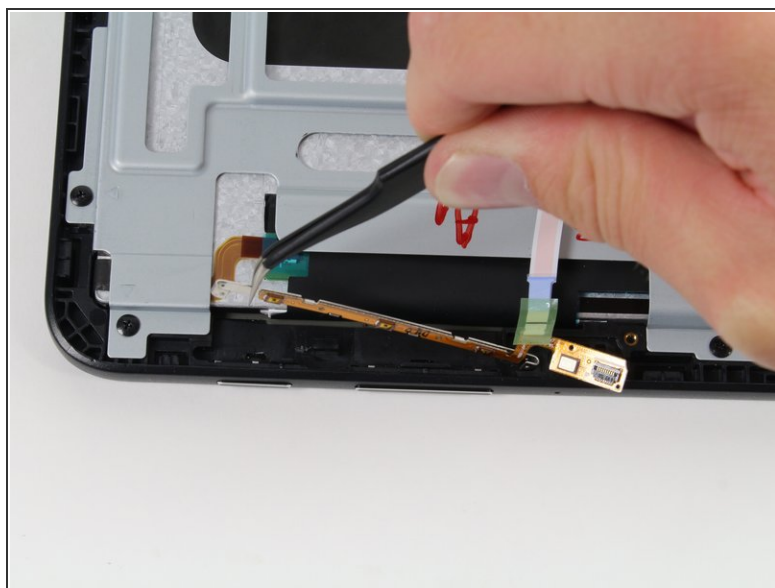
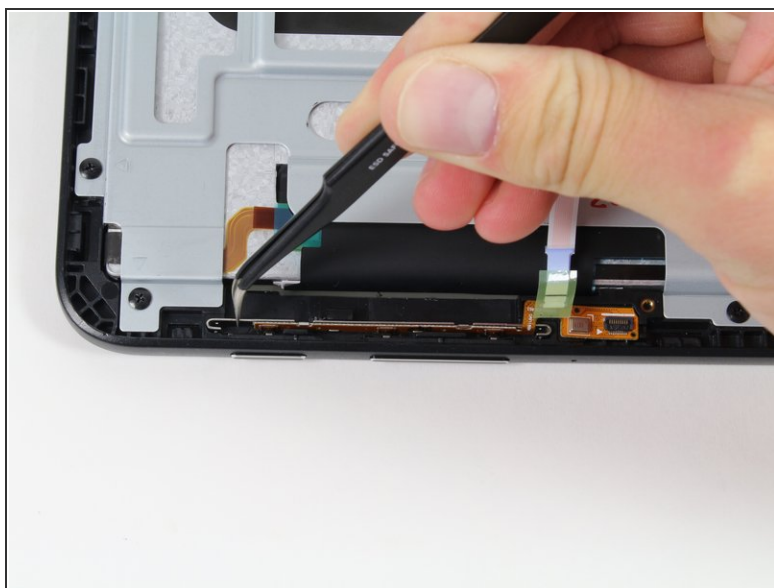
- Remove the 6 screws (4 mm in length) using the Phillips #0 screwdriver.
- Remove the battery from the device.

Step 8 — Sound and Power Buttons



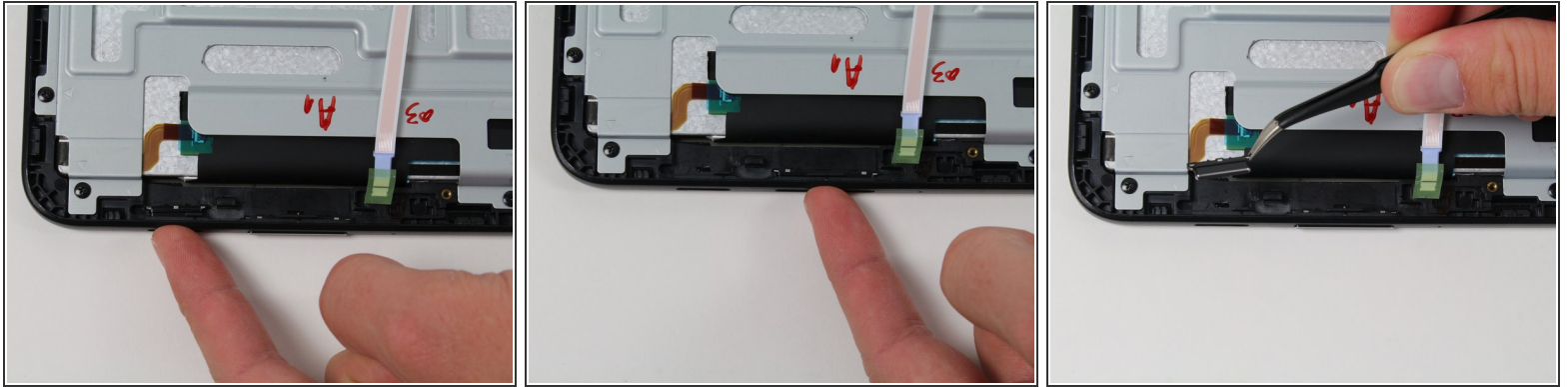
- Use your fingers to pull the blue no-fuss ribbon cable connector to the right of the metal bar, up and away from its connection.

Step 9



- Use the tweezers to pick up the metal bar starting with one side and moving to the other.
- Lift it straight up from the device.

Step 10



- Use your fingers to gently push each button through the hole in the device.
- Use the tweezers to pick up the loose buttons and remove them from the device.

To reassemble your device, follow these instructions in reverse order.