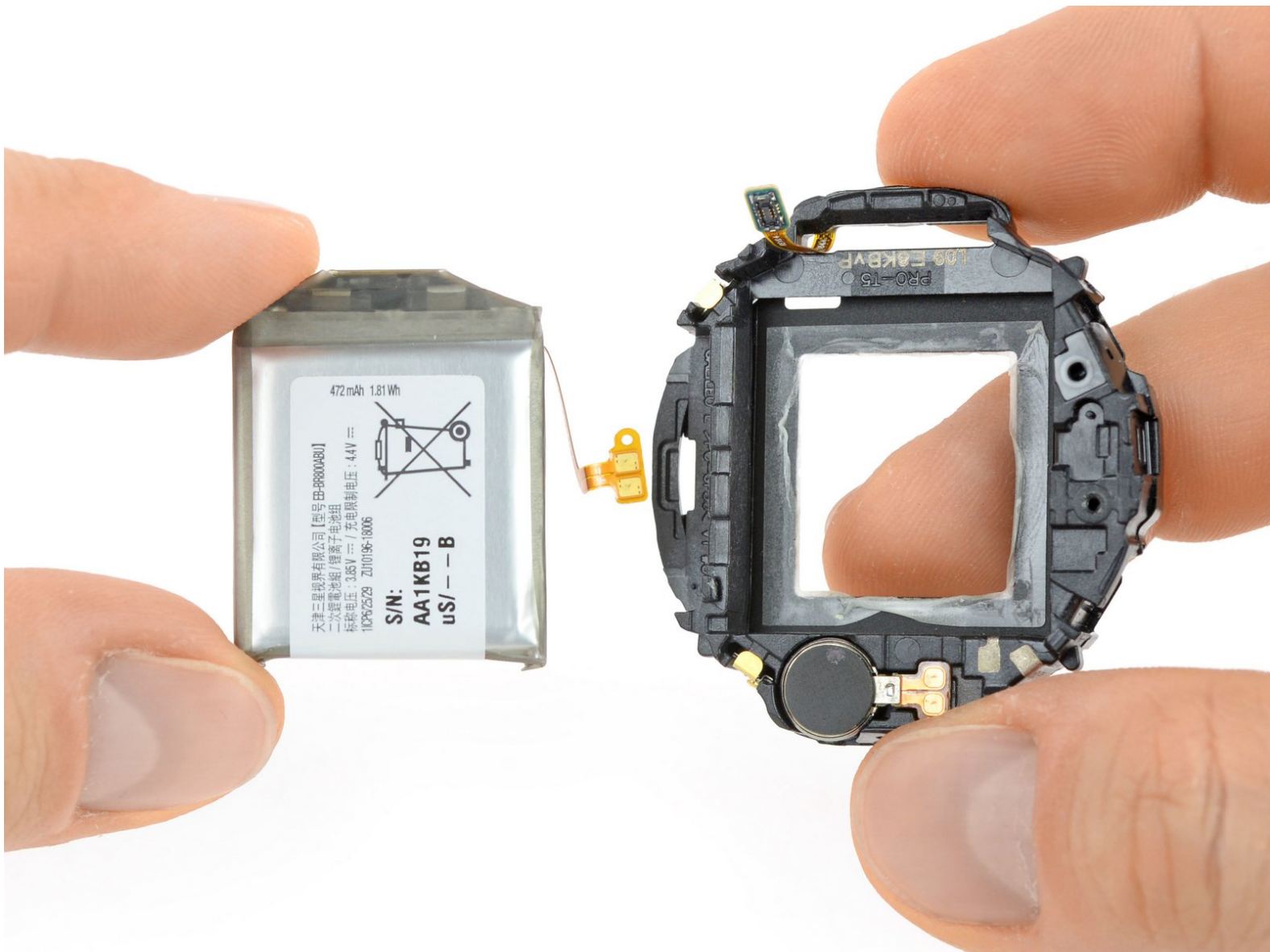




Samsung Galaxy Watch Battery Replacement

This guide shows how to replace a worn-out or dead battery in a Samsung Galaxy Watch.

Written By: Tobias Isakeit



INTRODUCTION

Use this guide to replace a worn-out or dead battery in your Galaxy Watch.

If your battery is swollen, [take appropriate precautions](#). For your safety, **discharge your battery below 25%** before disassembling your smartwatch. This reduces the risk of a dangerous thermal event if the battery is accidentally damaged during the repair.



TOOLS:

- [ESD Safe Tweezers Blunt Nose](#) (1)
- [Tri-point Y00 Screwdriver Bit](#) (1)
- [iFixit Opening Tools](#) (1)
- [Spudger](#) (1)
- [Phillips #00 Screwdriver](#) (1)



PARTS:

- [Samsung Galaxy Watch \(46mm\) Replacement Battery](#) (1)

Step 1 — Opening Procedure




- Remove the four Tri-point #00 screws (4.2 mm length) on the backside of the watch.

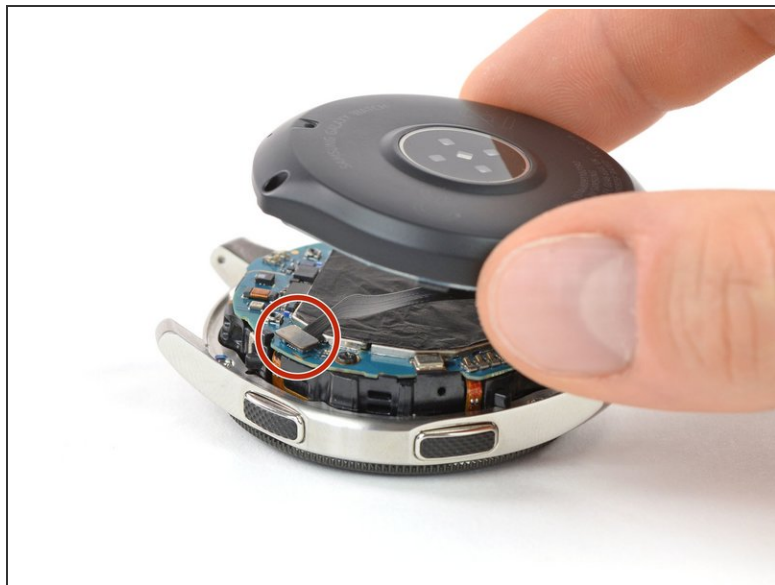
Step 2



- Use an opening tool to get between the back cover and the metal housing of the watch.
- Carefully pry the plastic back cover open.

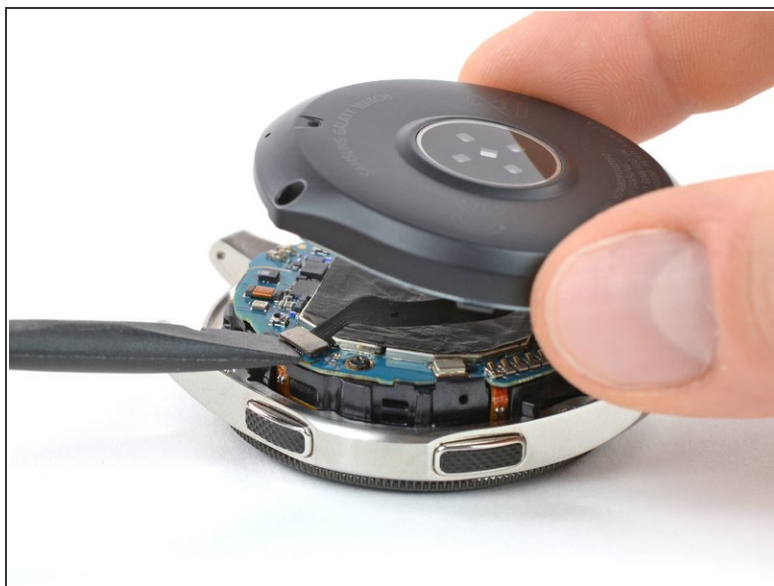
 Don't remove the back cover yet. There is a flex cable running to the core assembly inside.

Step 3



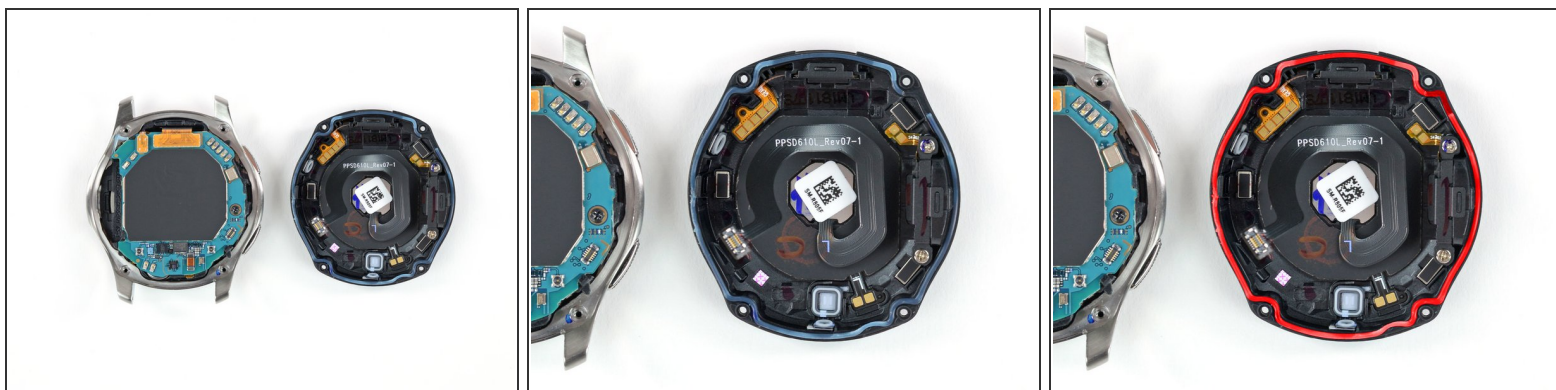
- Lay down the watch and lift the back cover to access the sensor connector on the motherboard.

Step 4



- Use a spudger to disconnect the sensor flex cable from the motherboard.

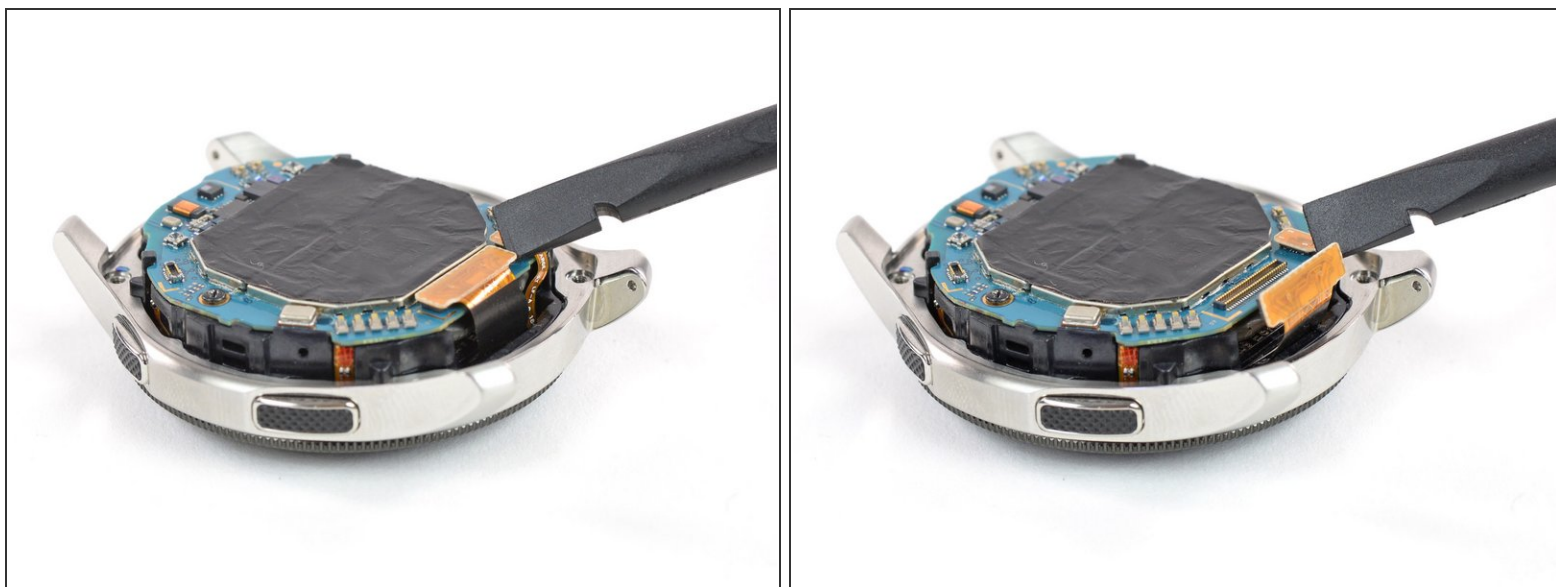
Step 5



- Remove the back cover.

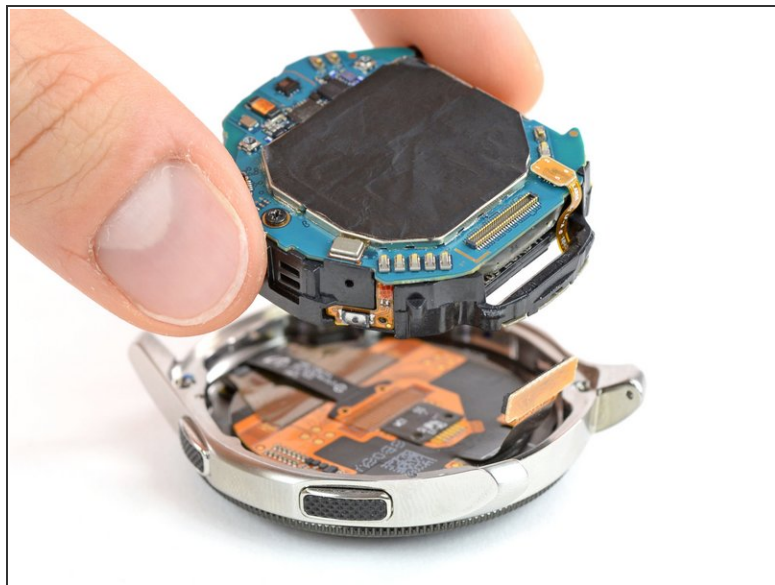
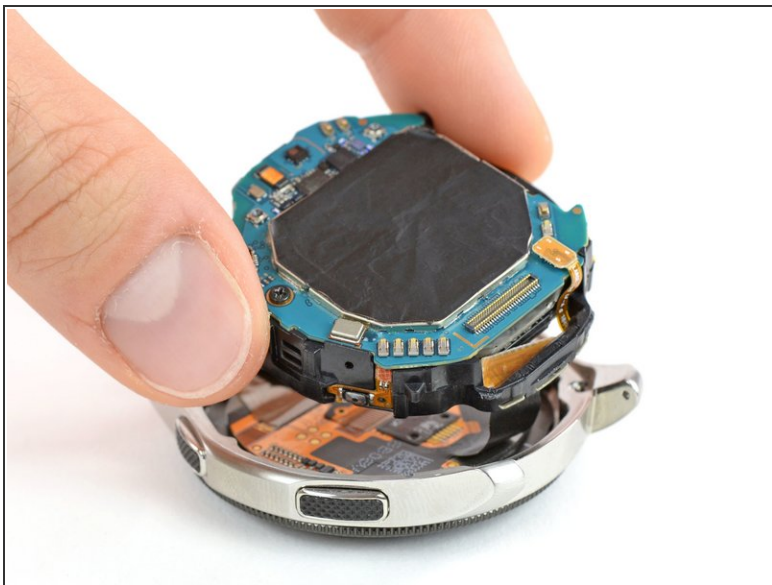
✦ When closing the watch make sure the rubber gasket is undamaged or replace it with a new one.

Step 6 — Core Assembly Removal



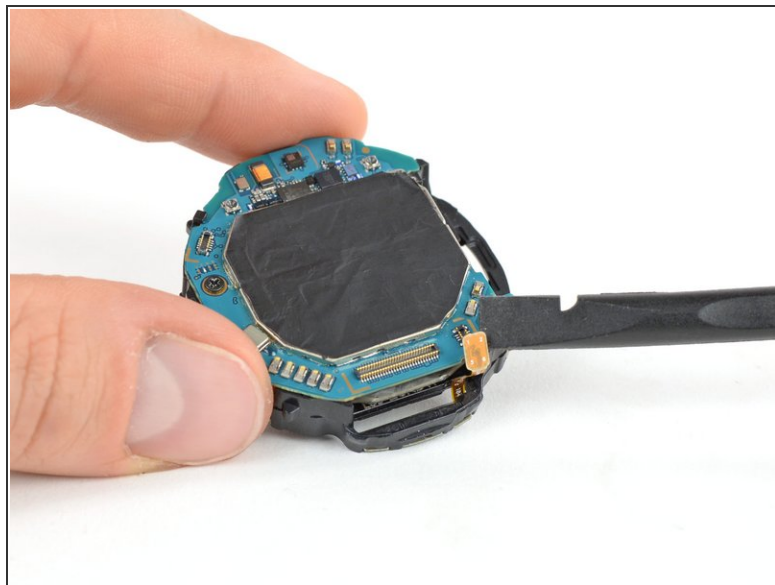
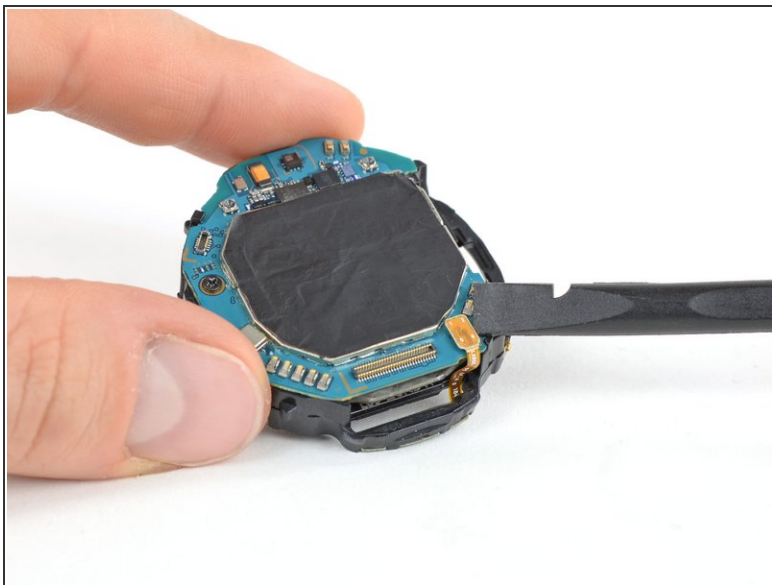
- Use a spudger to disconnect the display flex cable from the motherboard.

Step 7



- Lift the core unit out of the housing.
 - ⓘ The core's plastic frame sits tight inside the housing.
- ⚠ Carefully thread the display flex cable through the gap of the core's plastic frame.

Step 8 — Motherboard



- Use a spudger to disconnect the hall sensor flex cable.

Step 9



- Use a pair of tweezers to gently peel both button cables from the plastic frame.

Step 10



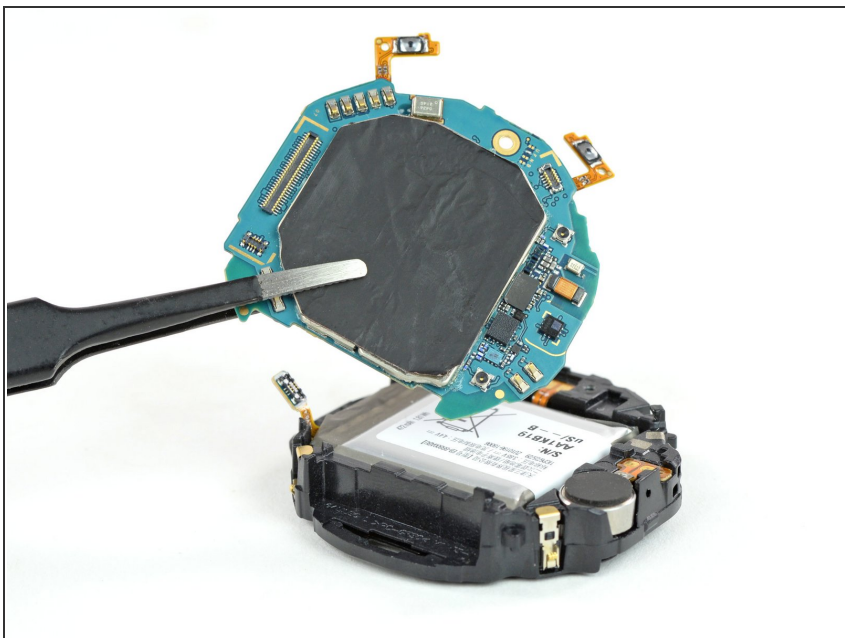
- Remove the single Phillips #00 screw (3.4 mm length).

Step 11



- Insert a spudger into the small gap underneath the motherboard where the cutout in the plastic frame is.
- Lift the motherboard by twisting the spudger.

Step 12



- Remove the motherboard.

Step 13 — Battery



- Push the battery out of its recess through the cutout in the plastic frame.
- ❗ The battery cable may slightly stick to the plastic frame—pull carefully.
- Remove the battery.

If possible, turn on your device and **test your repair** before installing new adhesive and resealing.

Secure the new battery with pre-cut adhesive or double-sided adhesive tape. In order to position it correctly, apply the new adhesive into the device at the places where the old adhesive was located, not directly onto the battery.

To reassemble your device, **follow these instructions in reverse order**.

For optimal performance, **calibrate your newly installed battery**: Charge it to 100% and keep charging it for at least 2 more hours. Then use your device until it shuts off due to low battery. Finally, charge it uninterrupted to 100%.

Repair didn't go as planned? Try some [basic troubleshooting](#), or ask our [Answers community](#) for help.

Take your e-waste to an [R2 or e-Stewards certified recycler](#).