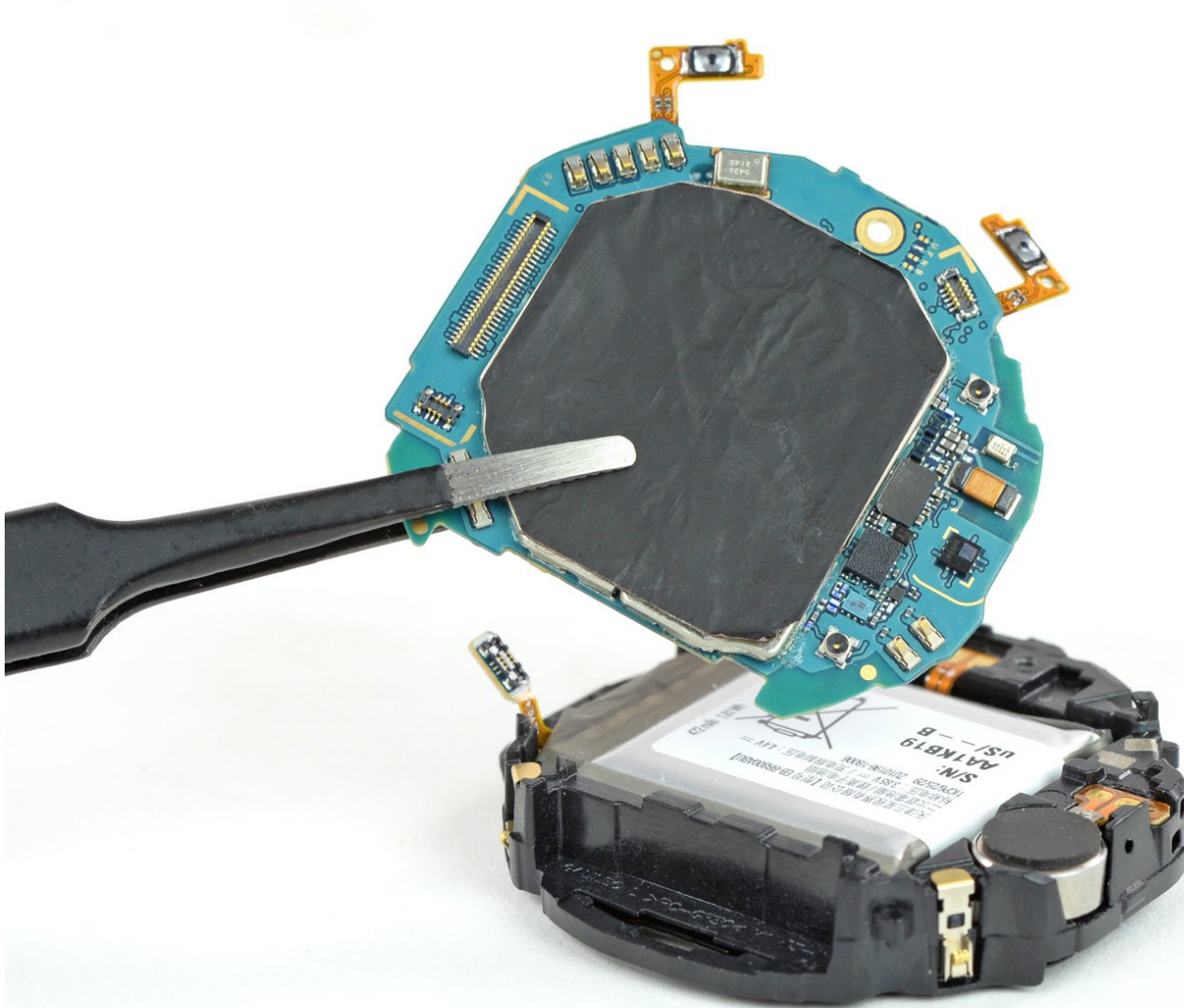




Samsung Galaxy Watch Motherboard Replacement

This guide shows how to replace the motherboard in a Samsung Galaxy Watch.

Written By: Tobias Isakeit



INTRODUCTION

Use this guide to replace the motherboard in a Samsung Galaxy Watch.



TOOLS:

- [Tri-point Y00 Screwdriver Bit](#) (1)
 - [iFixit Opening Tools](#) (1)
 - [Spudger](#) (1)
 - [Phillips #00 Screwdriver](#) (1)
 - [ESD Safe Tweezers Blunt Nose](#) (1)
-

Step 1 — Opening Procedure




- Remove the four Tri-point #00 screws (4.2 mm length) on the backside of the watch.

Step 2



- Use an opening tool to get between the back cover and the metal housing of the watch.
- Carefully pry the plastic back cover open.

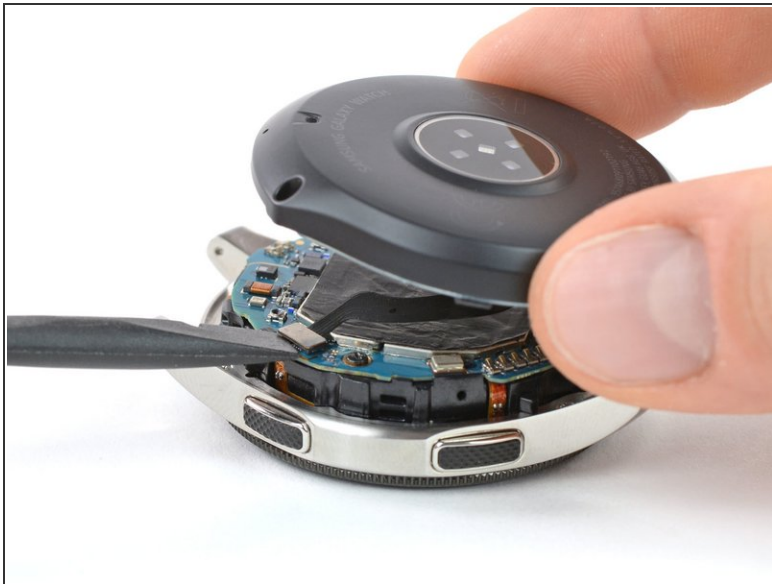
 Don't remove the back cover yet. There is a flex cable running to the core assembly inside.

Step 3



- Lay down the watch and lift the back cover to access the sensor connector on the motherboard.

Step 4



- Use a spudger to disconnect the sensor flex cable from the motherboard.

Step 5



- Remove the back cover.

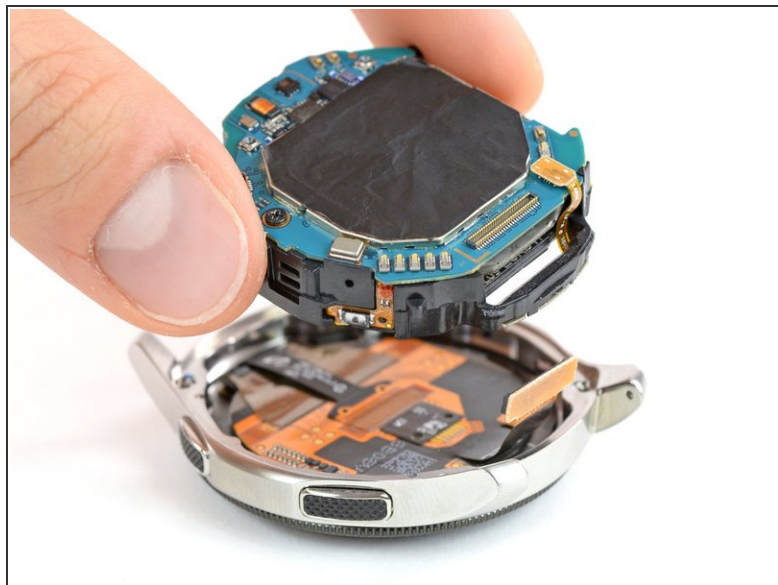
☑ When closing the watch make sure the rubber gasket is undamaged or replace it with a new one.

Step 6 — Core Assembly Removal



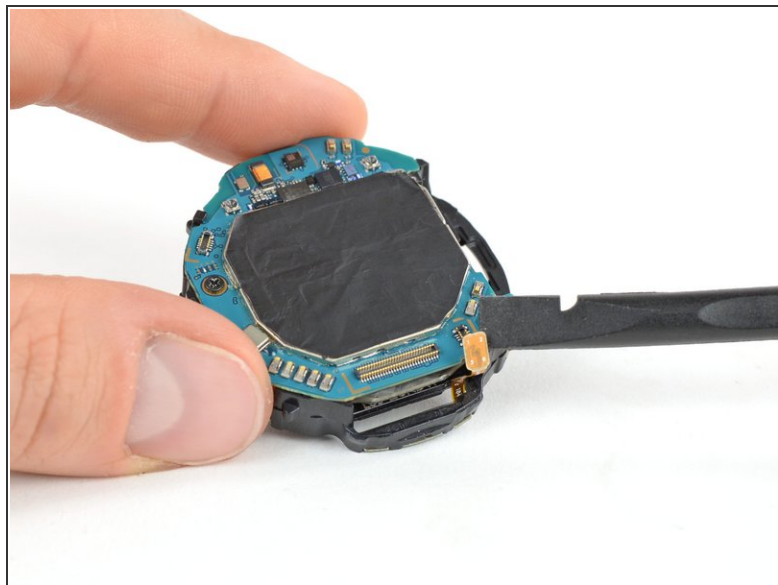
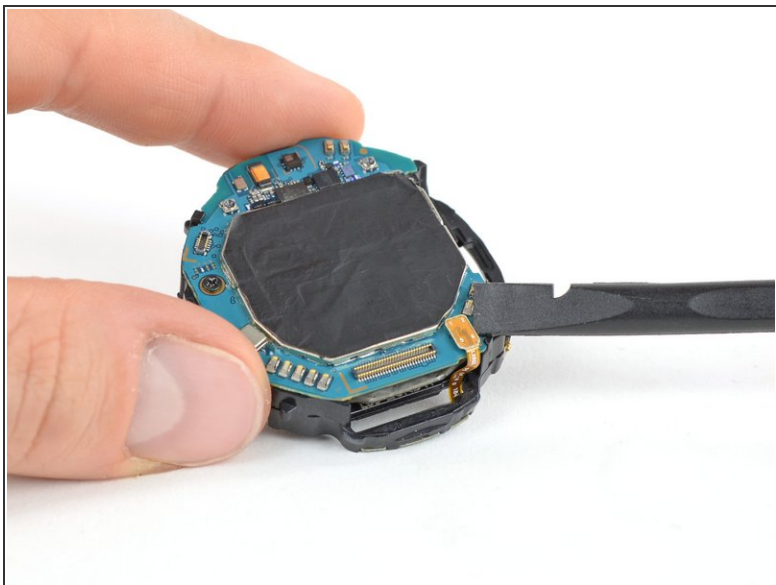
- Use a spudger to disconnect the display flex cable from the motherboard.

Step 7



- Lift the core unit out of the housing.
 - ⓘ The core's plastic frame sits tight inside the housing.
 - ⚠ Carefully thread the display flex cable through the gap of the core's plastic frame.

Step 8 — Motherboard



- Use a spudger to disconnect the hall sensor flex cable.

Step 9



- Use a pair of tweezers to gently peel both button cables from the plastic frame.

Step 10



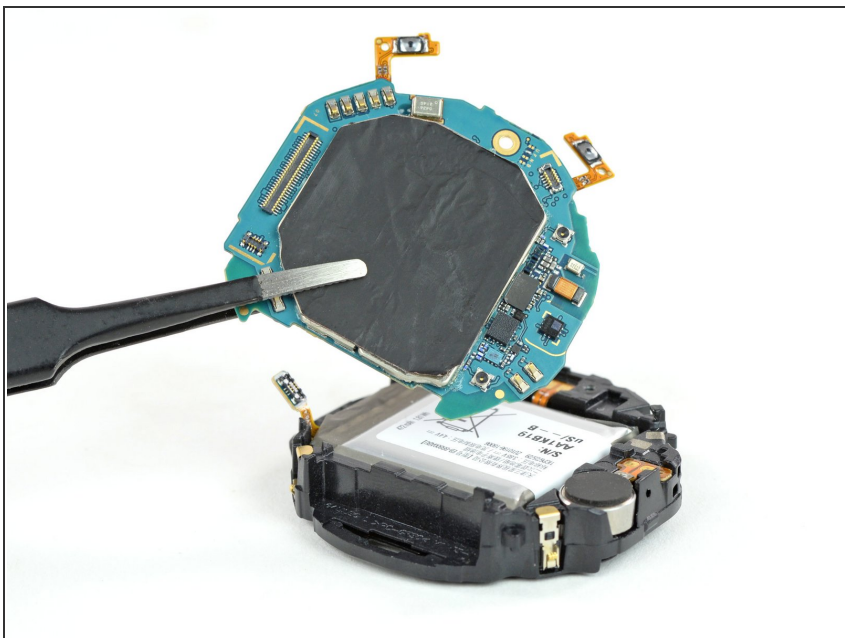
- Remove the single Phillips #00 screw (3.4 mm length).

Step 11



- Insert a spudger into the small gap underneath the motherboard where the cutout in the plastic frame is.
- Lift the motherboard by twisting the spudger.

Step 12



- Remove the motherboard.

If possible, turn on your device and **test your repair** before resealing.

To reassemble your device, **follow these instructions in reverse order**.

Repair didn't go as planned? Try some [basic troubleshooting](#), or ask our [Answers community](#) for help.

Take your e-waste to an [R2 or e-Stewards certified recycler](#).