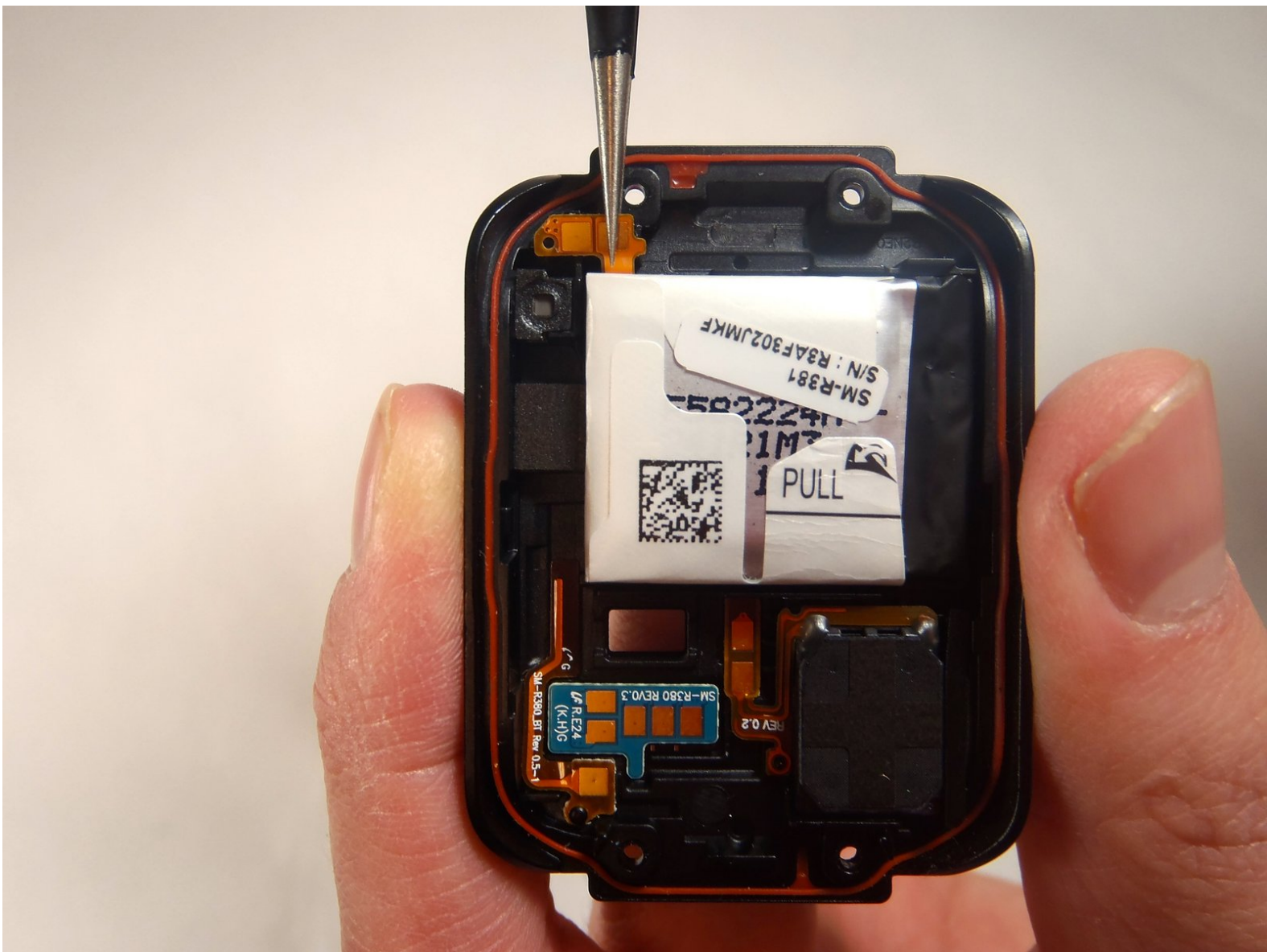




Samsung Gear 2 Neo Battery Replacement

This guide is meant to show step-by-step instructions on how to replace the battery. The difficulty level to replace the battery is 3 out of 10 and takes approximately 10 minutes to complete.

Written By: Victor Yore



INTRODUCTION

After prolonged use, the battery may not hold as long of a charge as it did initially. In this case, the battery will need to be replaced. Do not worry, because battery replacement on the Samsung Gear 2 Neo is one of the easier repairs to complete.



TOOLS:

- [Tweezers](#) (1)
 - [iFixit Opening Tools](#) (1)
 - [T5 Torx Screwdriver](#) (1)
-

Step 1 — Battery



- Remove the wristband by sliding the metal pins located on both sides of the wrist band, and pulling the wristband off.

Step 2



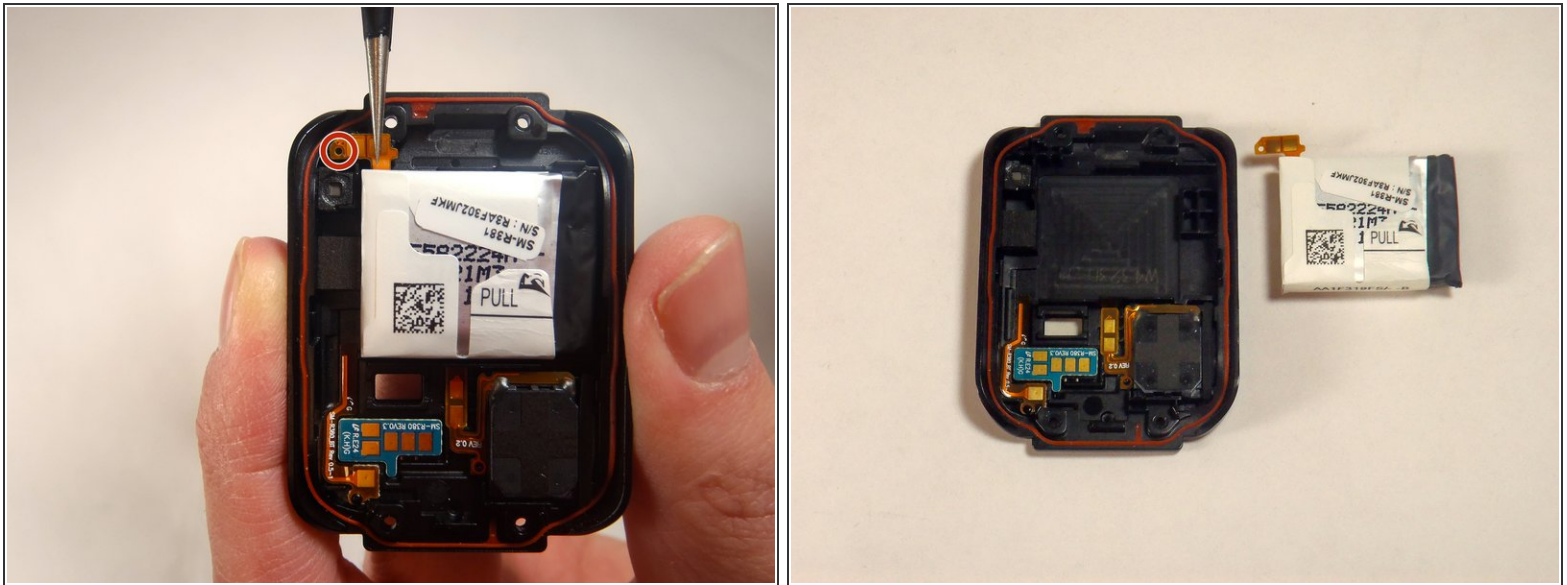
- Use a T5 Torx Screwdriver to remove the 4 (0.4 mm) screws located on the back of the watch.

Step 3



- Slide the opening tool in between the two halves of the case and slide along the edge of the watch while gently prying the back cover away from the face of the watch.

Step 4



- Use a pair of tweezers to peel the battery ribbon cable off of the back cover.
 - ⚠ Avoid damaging the gold terminals on the ribbon cable.
- ☑ When reassembling, make sure that the yellow strip snaps back on to the black pin.
 - The pin is located, and marked on the picture.
- Pull up on the tab that says, "Pull", the battery will lift straight out.

To reassemble your device, follow these instructions in reverse order.