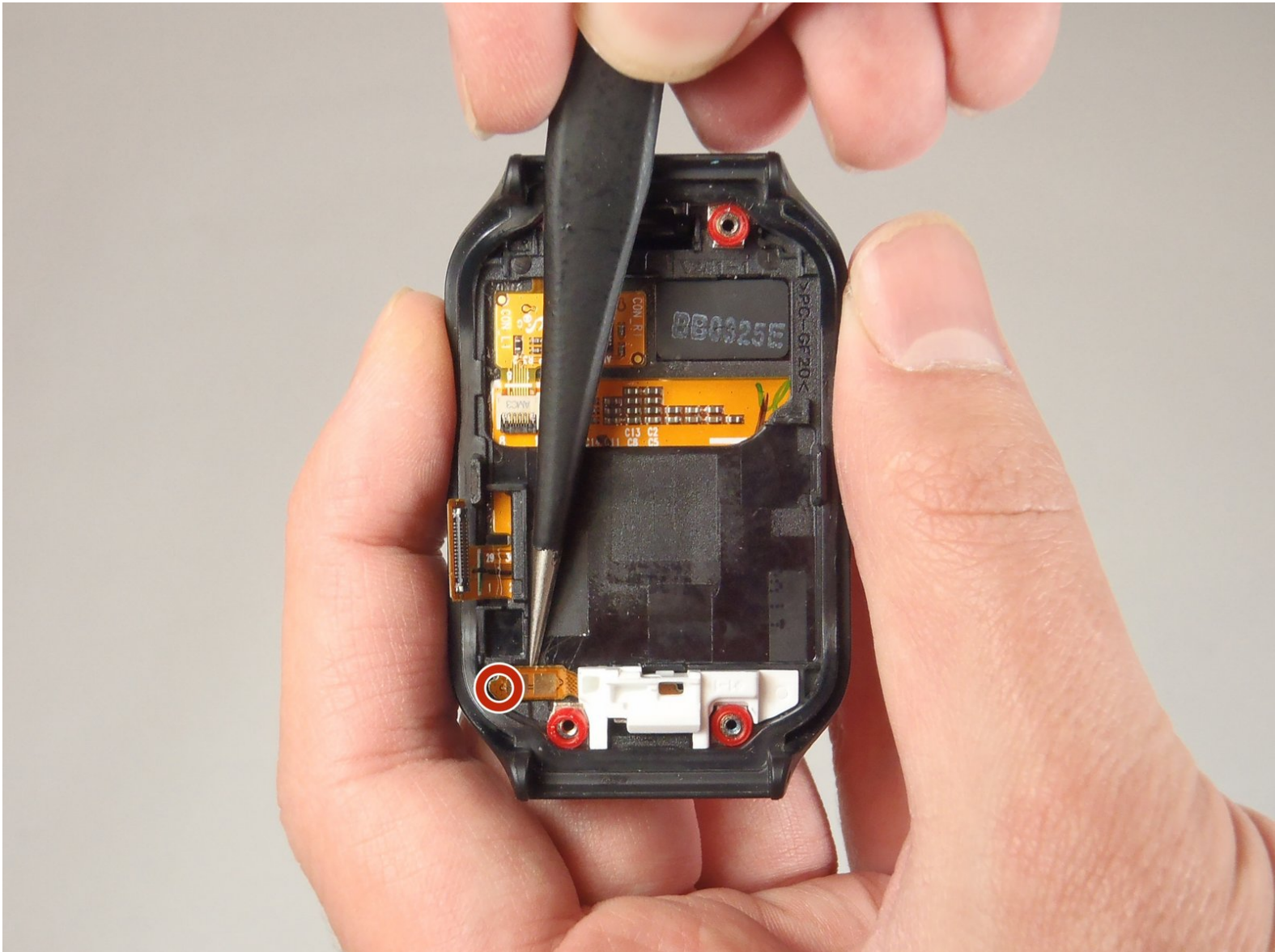




Samsung Gear 2 Neo Home Button Replacement

For replacing the home button for a Samsung Gear 2 Neo please follow these instructions.

Written By: Victor Yore



INTRODUCTION

If your home button is smashed in, or isn't functioning properly then this guide will show you step-by-step instructions for home button replacement. This is very easy rated at 3 out of 10. and should only take 5 minutes.

TOOLS:

- [T5 Torx Screwdriver](#) (1)
 - [iFixit Opening Tools](#) (1)
 - [Tweezers](#) (1)
 - [Anti-Static Wrist Strap](#) (1)
 - [T6 Torx Screwdriver](#) (1)
-

Step 1 — Battery



- Remove the wristband by sliding the metal pins located on both sides of the wrist band, and pulling the wristband off.

Step 2



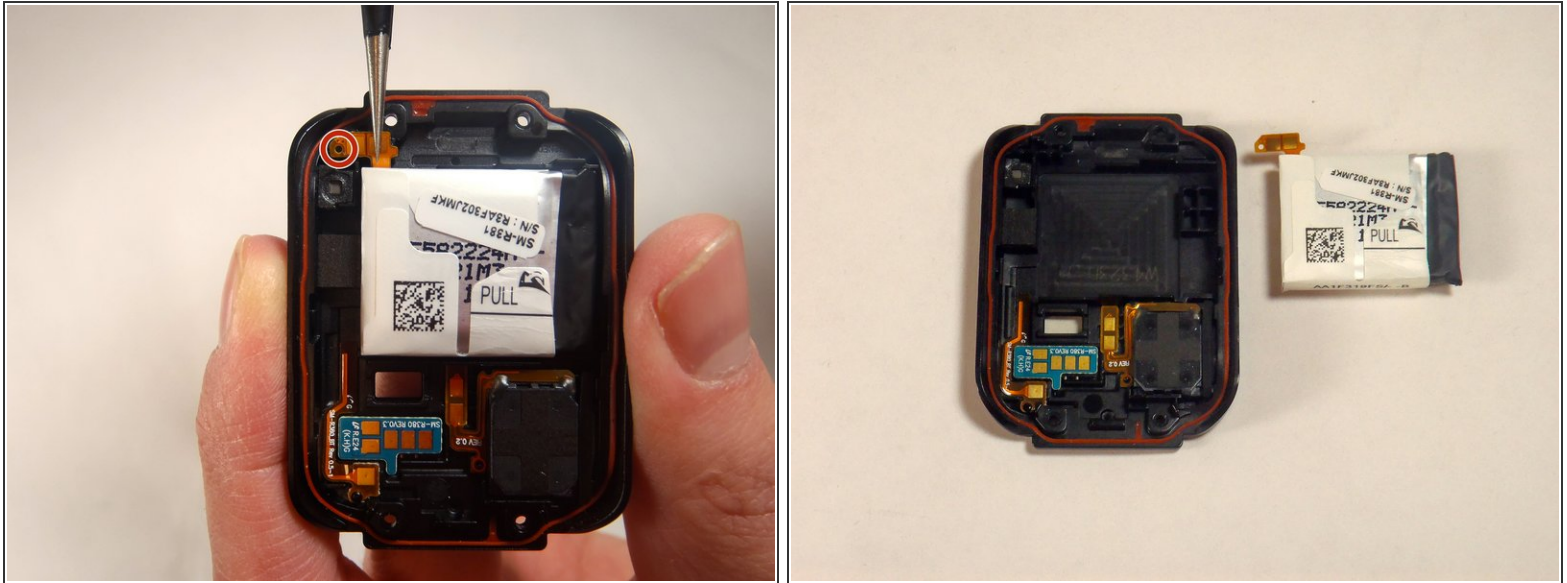
- Use a T5 Torx Screwdriver to remove the 4 (0.4 mm) screws located on the back of the watch.

Step 3



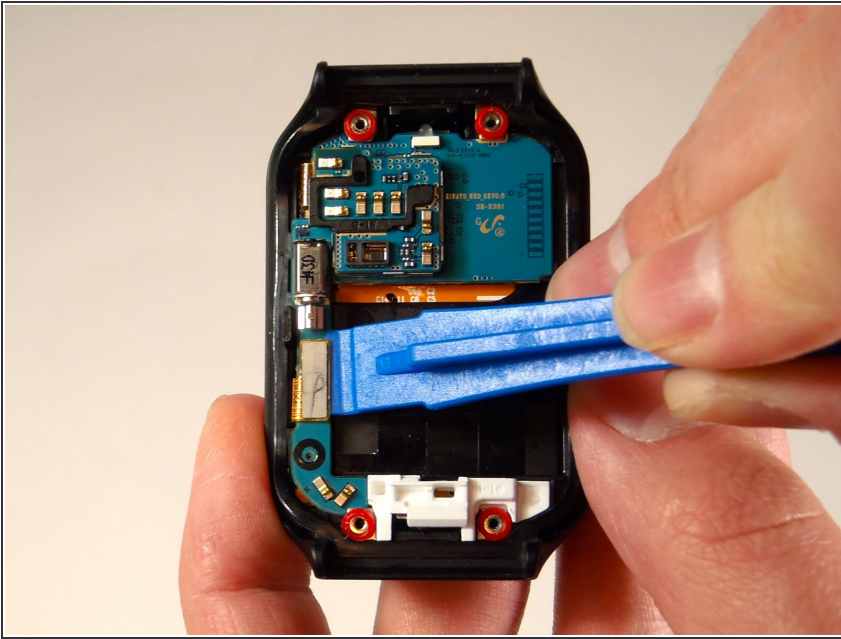
- Slide the opening tool in between the two halves of the case and slide along the edge of the watch while gently prying the back cover away from the face of the watch.

Step 4



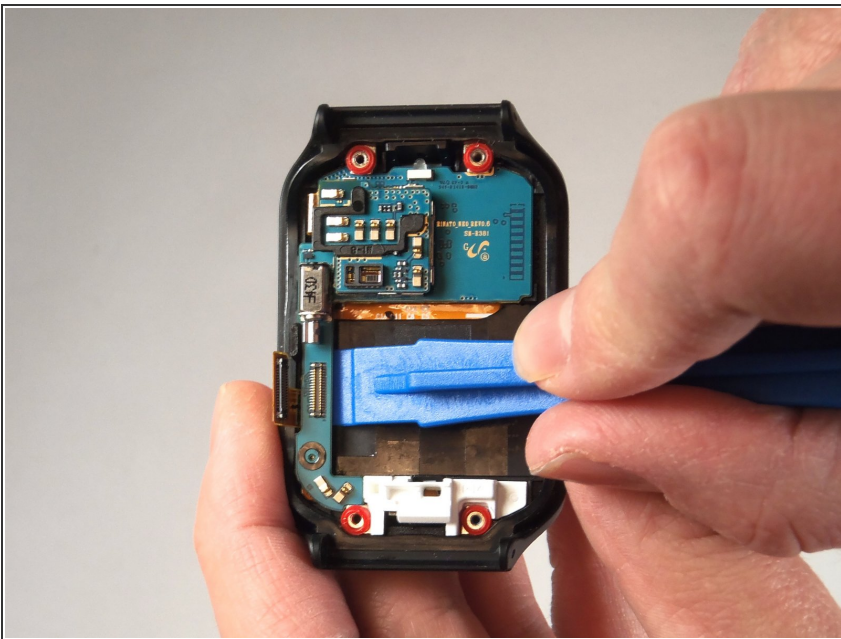
- Use a pair of tweezers to peel the battery ribbon cable off of the back cover.
 - ⚠ Avoid damaging the gold terminals on the ribbon cable.
- ☑ When reassembling, make sure that the yellow strip snaps back on to the black pin.
 - The pin is located, and marked on the picture.
- Pull up on the tab that says, “Pull”, the battery will lift straight out.

Step 5 — Motherboard



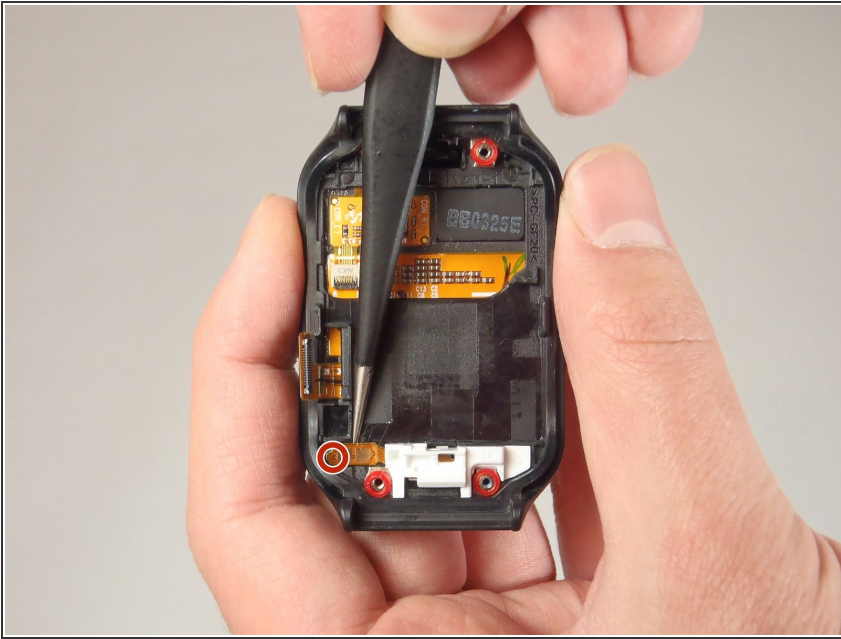
- Using the plastic opening tool, pull up on the flex connector. It will come off the motherboard, but will stay attached to the cover like a hinge.

Step 6



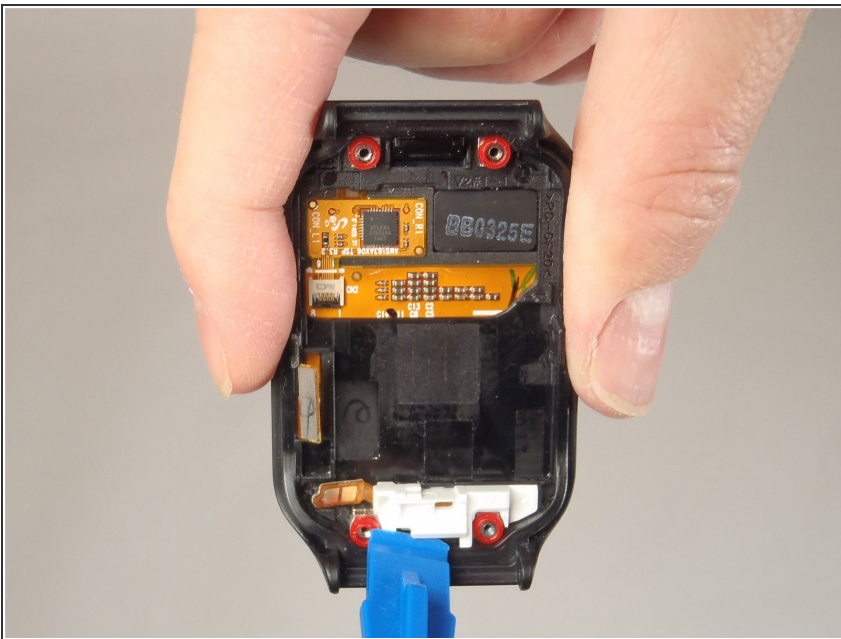
- ⚠ It is recommended to use antistatic wrist wrap whenever removing the motherboard.
- Place the plastic opening tool underneath the motherboard at this location. Gently pry the motherboard away from the front cover. It should pop off and be free from the cover.
- ⓘ Attached to the motherboard is the infrared LED Light. To replace the IR LED, you may need to replace the entire motherboard.

Step 7 — Home Button



- Using fine tweezers, pull the home button ribbon cable up and away from the front cover.
- ☑ Like with the battery's ribbon cable, there is a pin that holds the pad in place. It is in the area marked. However, the models' pin had be broken.

Step 8



- Using the plastic opening tool, pry the home button away from the front cover.
- The whole home button mechanism should lift right out.

To reassemble your device, follow these instructions in reverse order.