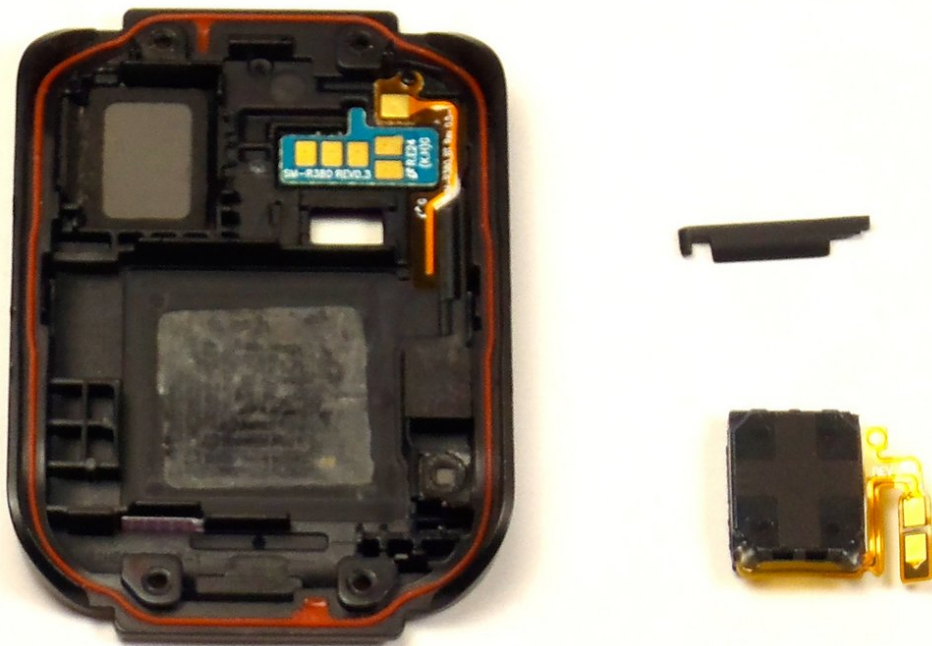




Samsung Gear 2 Neo Speaker Replacement

For replacing the speaker of a Samsung Gear 2 Neo then follow these instructions.

Written By: Victor Yore



INTRODUCTION

If your speaker begins to fail, or if it no longer works, then this guide will help in show you step-by-step instructions on replacing the speaker. The speaker has some extra insulation to hold the speaker in place. This is a 4 out of 10 and should take at most 10 minutes to replace.



TOOLS:

- [Tweezers](#) (1)
 - [T6 Torx Screwdriver](#) (1)
 - [iFixit Opening Tools](#) (1)
-

Step 1 — Battery



- Remove the wristband by sliding the metal pins located on both sides of the wrist band, and pulling the wristband off.

Step 2



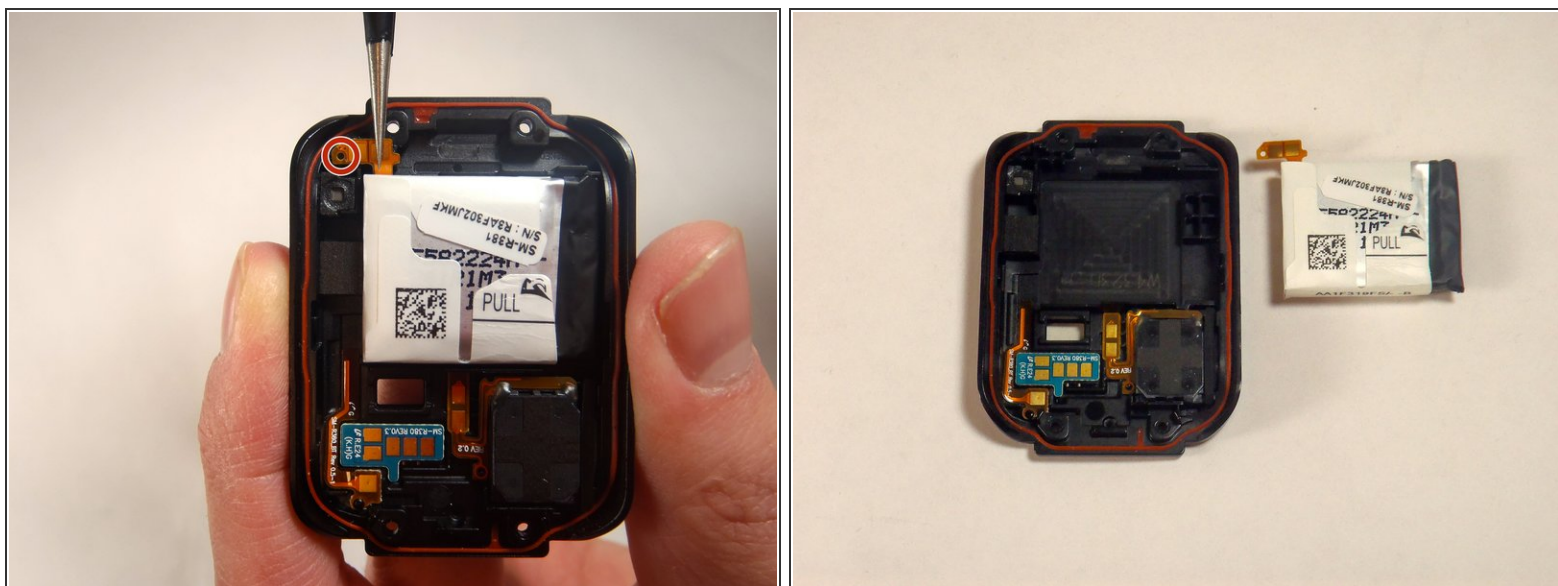
- Use a T5 Torx Screwdriver to remove the 4 (0.4 mm) screws located on the back of the watch.

Step 3



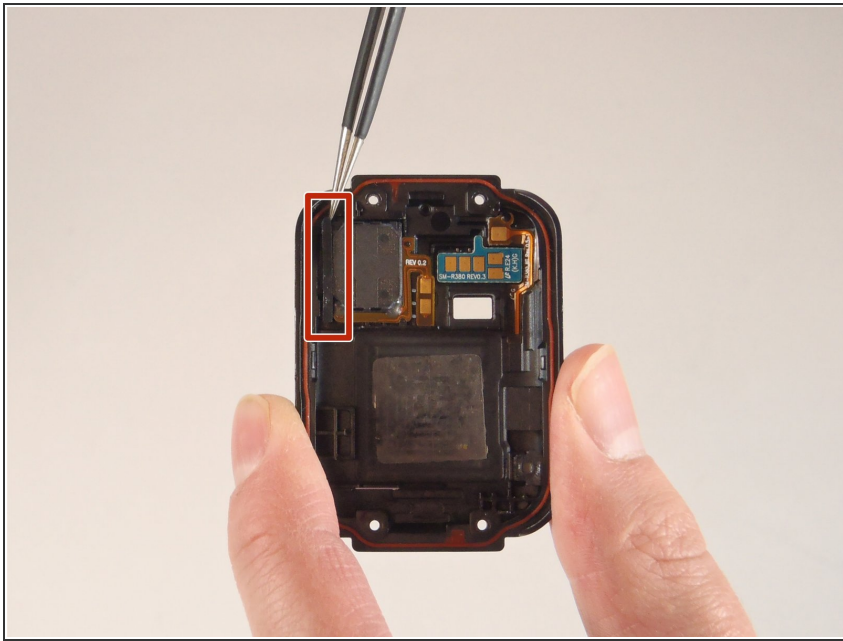
- Slide the opening tool in between the two halves of the case and slide along the edge of the watch while gently prying the back cover away from the face of the watch.

Step 4



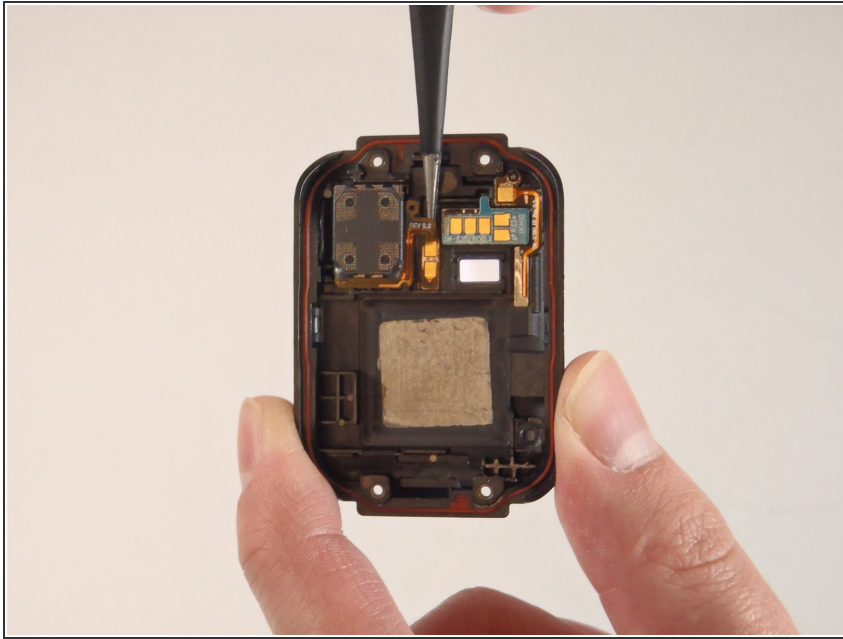
- Use a pair of tweezers to peel the battery ribbon cable off of the back cover.
 - ⚠ Avoid damaging the gold terminals on the ribbon cable.
- ☑ When reassembling, make sure that the yellow strip snaps back on to the black pin.
 - The pin is located, and marked on the picture.
- Pull up on the tab that says, "Pull", the battery will lift straight out.

Step 5 — Speaker



- Use a pair of tweezers to remove the rubber gasket. It should come off with ease.

Step 6



- Using the fine tweezers, pull up on the speaker ribbon cable until separated from the back cover. Make sure to approach it like in the picture otherwise it may not come off cleanly.
- To lift out the speaker, place the tweezers underneath the speaker at the top left corner of the speaker and pry it up.

To reassemble your device, follow these instructions in reverse order.