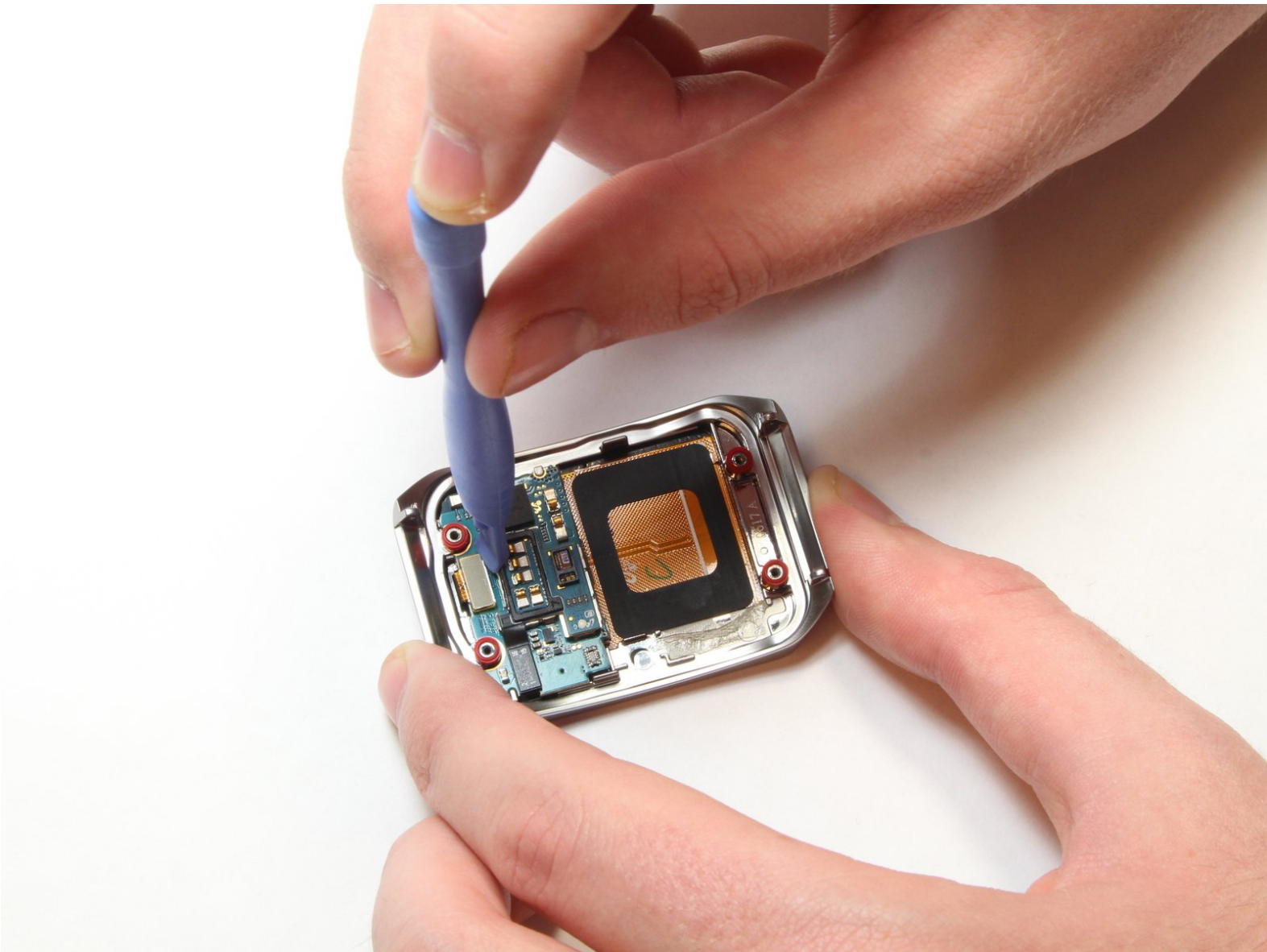




Samsung Gear Live Motherboard Replacement

This guide will show you how to remove the motherboard from the Samsung Gear Live. This is a prerequisite to removing the heart rate sensor.

Written By: Keith Cooper



INTRODUCTION

The motherboard contains the main circuitry for the watch.



TOOLS:

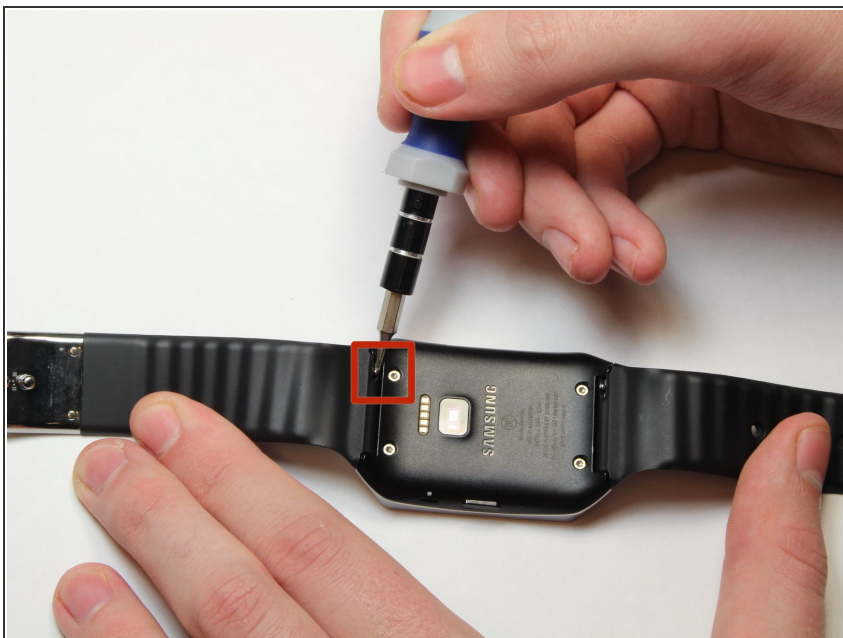
- [Flathead 3/32" or 2.5 mm Screwdriver](#) (1)
 - [iFixit Opening Tools](#) (1)
 - [T5 Torx Screwdriver](#) (1)
-

Step 1 — Lay the watch face-down



- Lay the watch face-down on a flat, stable surface.

Step 2 — Remove the holding pin



- Press the watchband down against the work surface.
- Press the tip of a flathead screwdriver against the edge of the spring-loaded holding pin.

Step 3 — Remove the watchband



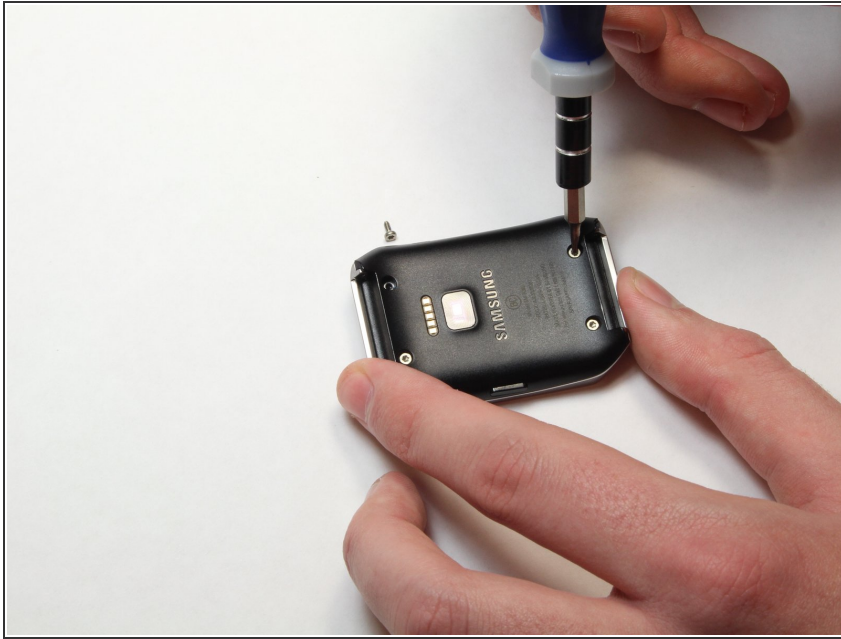
- With the spring-loaded pin pressed in, the watch band should release easily.
- Gently pull the band away from the body of the watch.
- Repeat steps 2 and 3 for the opposite side.

Step 4 — Locate the four screws



- With the watch laying face-down, locate the four screws. They are located on the back of the watch, at the four corners.

Step 5 — Remove the 4 screws



- Using a Torx-T5 screwdriver, remove each of the four 4mm screws and set them aside.

Step 6 — Pry off the back of the watch.



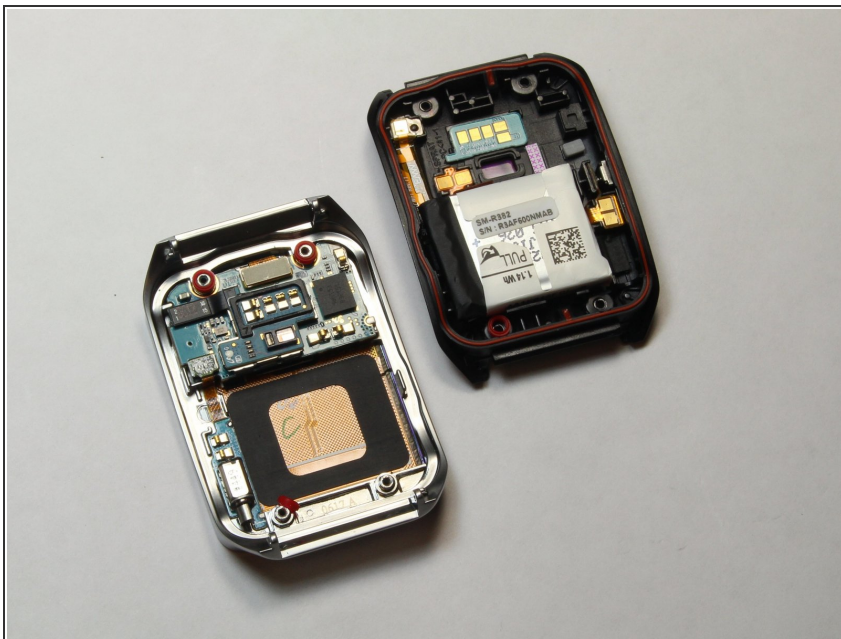
- Gently work the plastic opening tool under the top edge of the watch's back cover.

Step 7 — Lift off the back cover



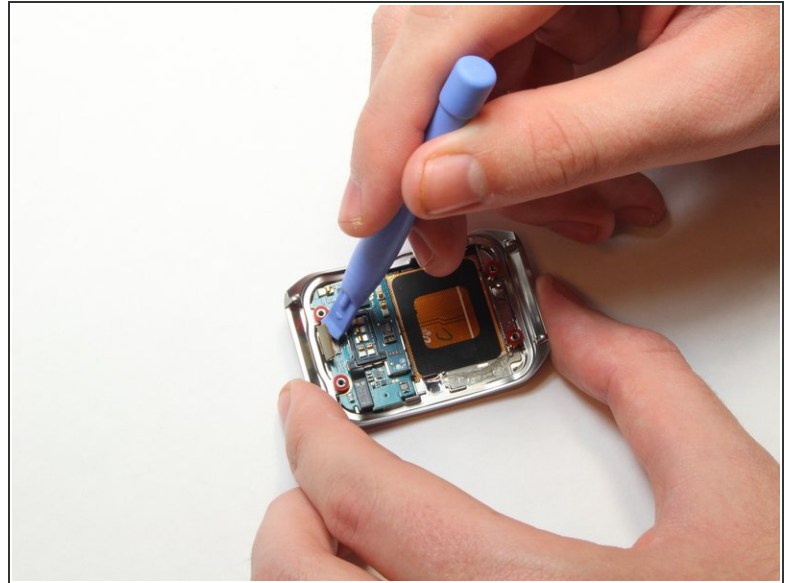
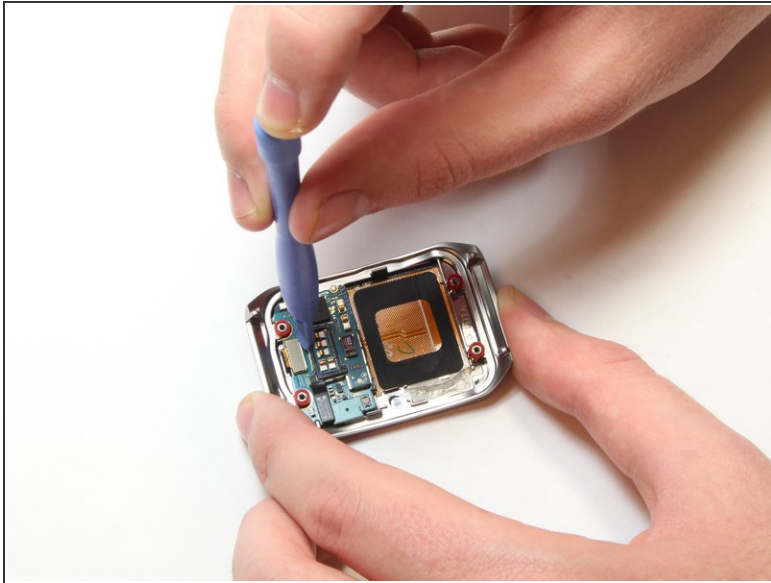
- With the watch's back cover pried loose, gently lift it away from the front half of the watch.

Step 8 — Set both halves of the watch aside



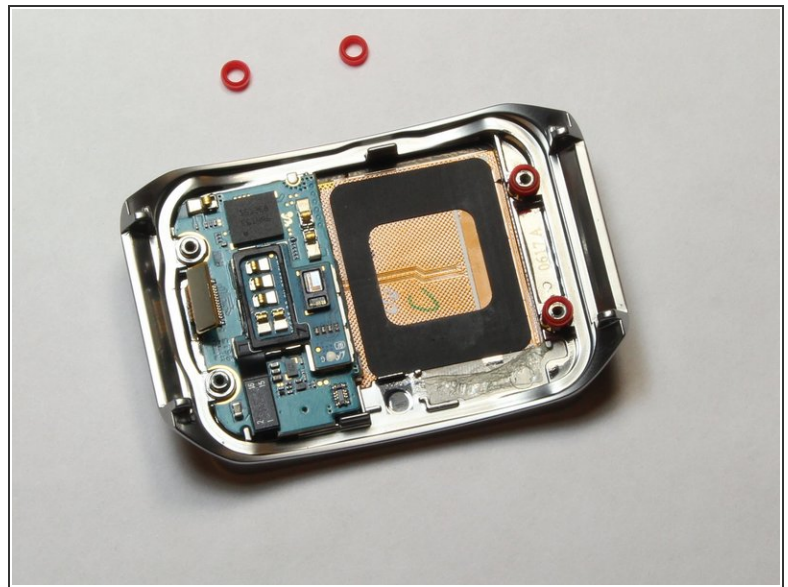
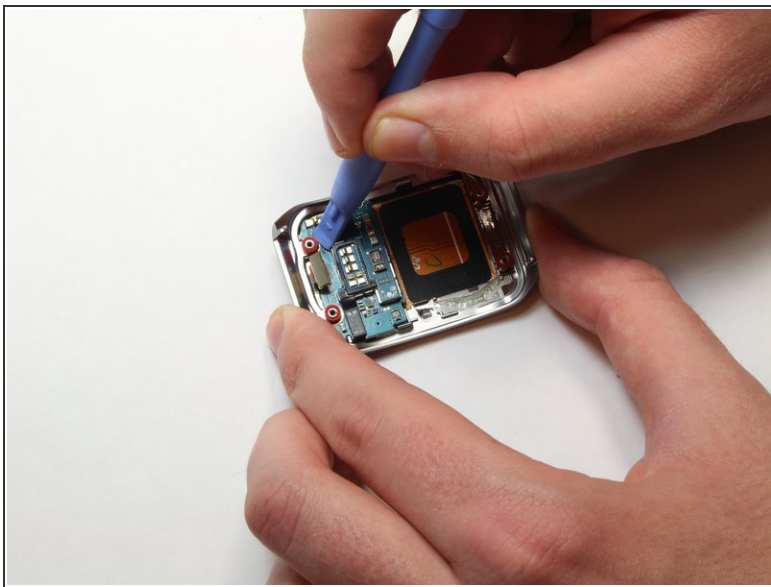
- Lay both halves of the watch body assembly face down (with internal components facing up).

Step 9 — Pry away the ribbon cable



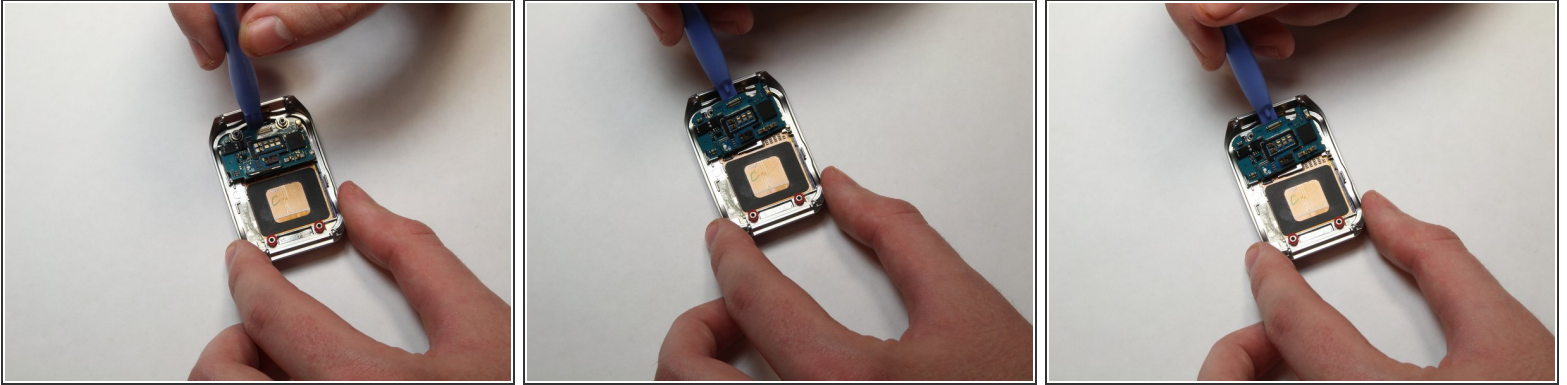
- Locate the ribbon cable connector near the edge of the watch's case.
- Using the plastic opening tool, gently pry the connector from the motherboard

Step 10 — Remove the red spacers



- Using the plastic opening tool, gently pry away the red spacers.
- Set the spacers aside.

Step 11 — Pry up the motherboard



- Insert the end of the plastic opening tool under the motherboard.
- Gently pry up the motherboard.

To reassemble your device, follow these instructions in reverse order.