



Samsung Gear Live Watchband Replacement

This guide will show you how to replace the watchband on the Samsung Gear Live.

Written By: Keith Cooper



INTRODUCTION

The watchband on the Samsung Gear Live is user-replaceable. If the band breaks or if you'd like to use a different band, follow these steps.



TOOLS:

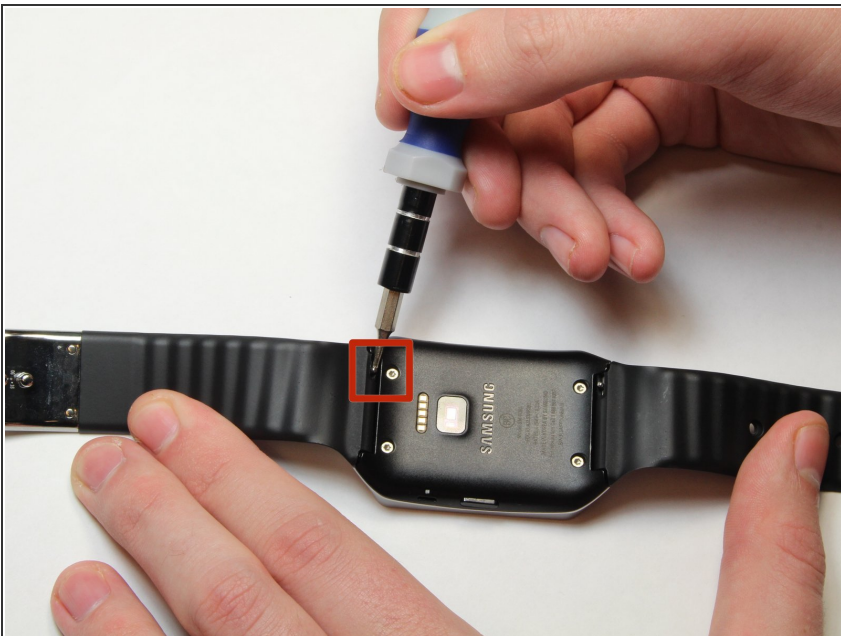
- [Flathead 3/32" or 2.5 mm Screwdriver](#) (1)
-

Step 1 — Lay the watch face-down



- Lay the watch face-down on a flat, stable surface.

Step 2 — Remove the holding pin



- Press the watchband down against the work surface.
- Press the tip of a flathead screwdriver against the edge of the spring-loaded holding pin.

Step 3 — Remove the watchband



- With the spring-loaded pin pressed in, the watch band should release easily.
- Gently pull the band away from the body of the watch.
- Repeat steps 2 and 3 for the opposite side.

To reassemble your device, follow these instructions in reverse order.