



# Samsung Gear S Home Button Assembly Replacement

If your home button does not respond, use this guide to replace it.

Written By: Luis Franco



# INTRODUCTION

This guide will give step by step instructions on how to replace the home button.



## TOOLS:

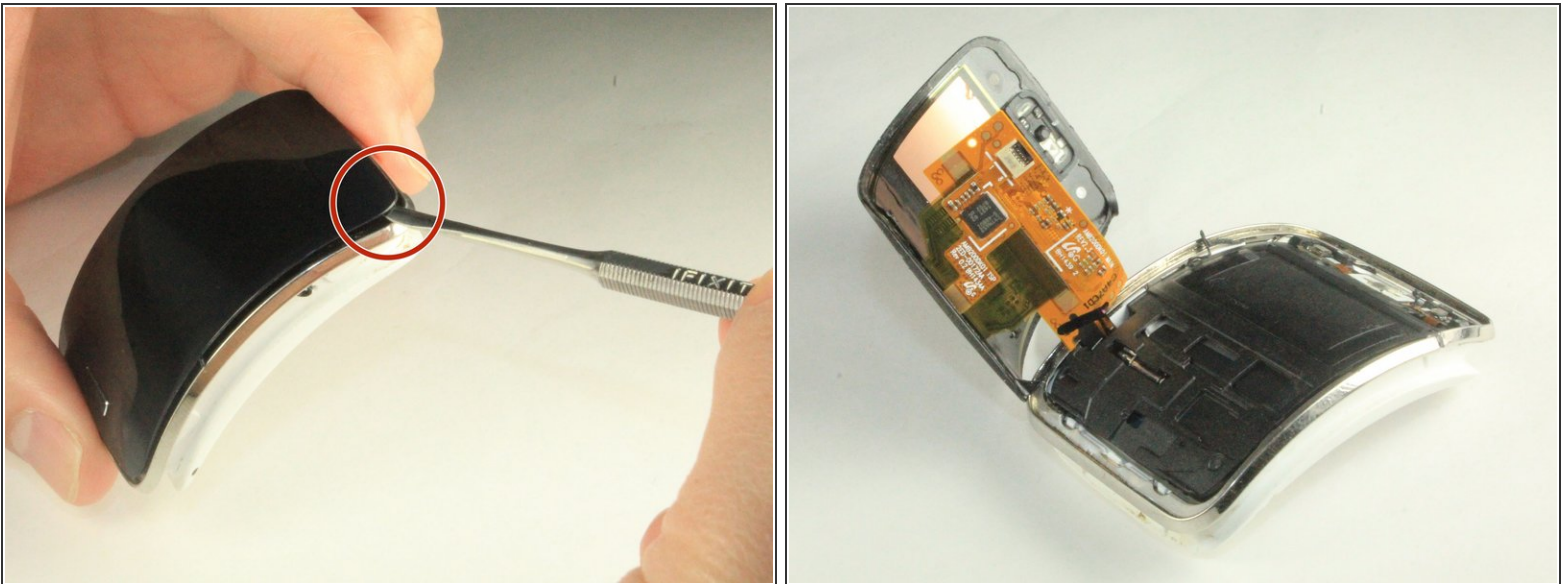
- [Metal Spudger](#) (1)
  - [iFixit Opening Tools](#) (1)
  - [Spudger](#) (1)
-

## Step 1 — Display Assembly



- Remove the wrist strap by peeling back the rubber starting from one corner of the watch face. Continue peeling the rubber away from the watch face until the strap is completely off.

## Step 2



- Starting from an edge, wedge a metal spudger in between the screen and the chrome trim ring and pry, lifting the screen outwards.

 Some force is needed due to adhesive seal.

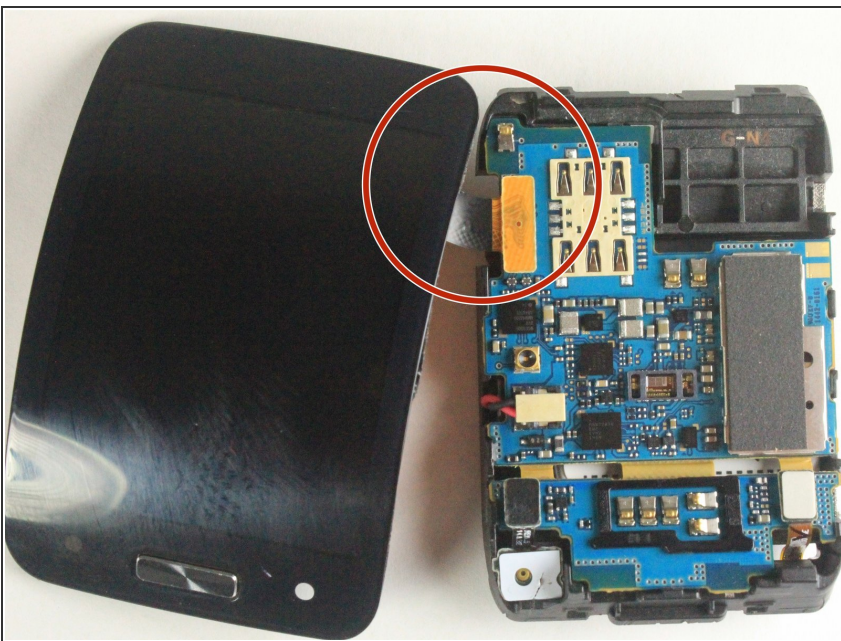


### Step 3



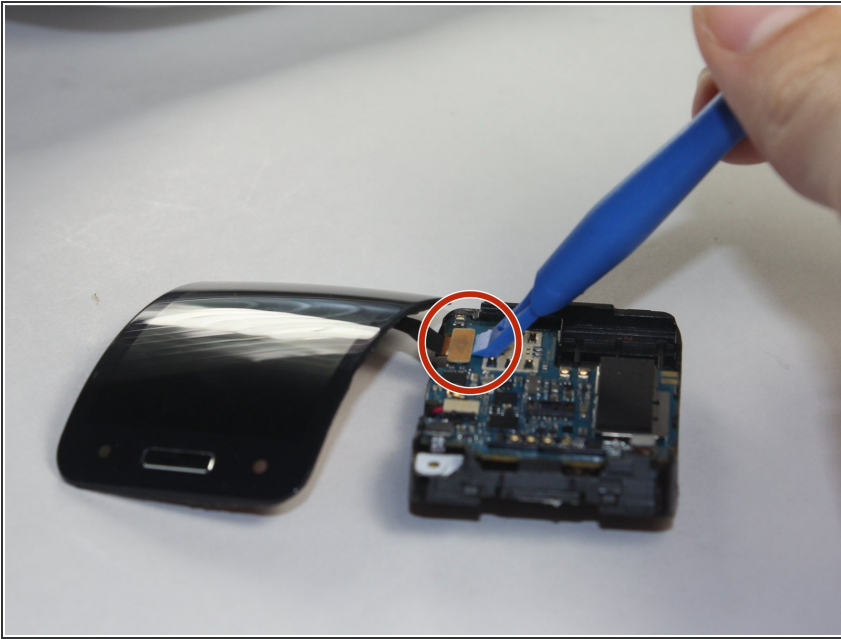
- Use a plastic opening tool to gently pry upwards on the plastic motherboard assembly.

### Step 4



- Locate the ribbon assembly attaching the display to the motherboard.

## Step 5



- Use a plastic opening tool to detach the glass screen/ LED Display ribbon connector from the motherboard.

## Step 6



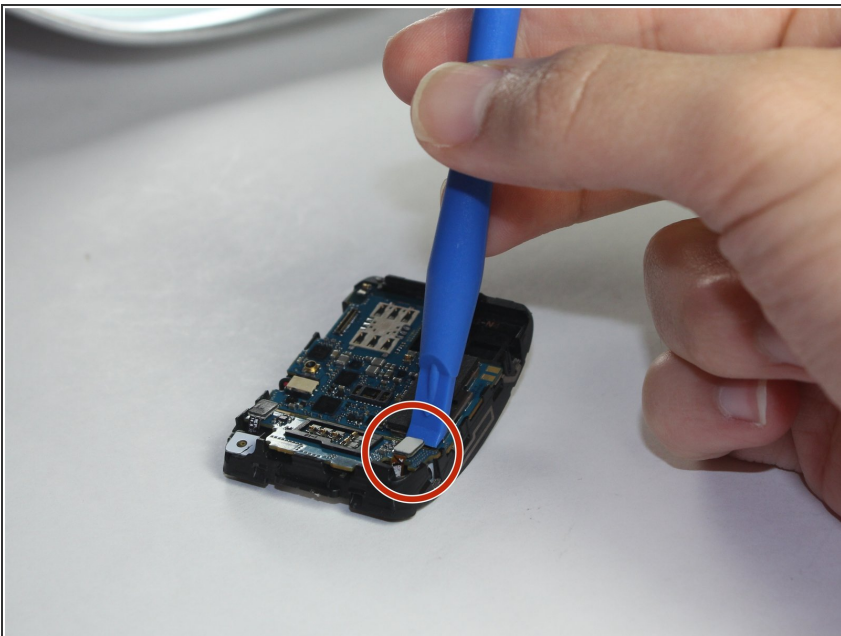
- Now the watch should be in three separate pieces.

## Step 7 — Home Button Assembly



- Locate the home ribbon connector attached to the wrist side (side that faces the user when wearing it) of the motherboard assembly.
- Locate the home ribbon assembly attached to the screen side of the motherboard assembly.

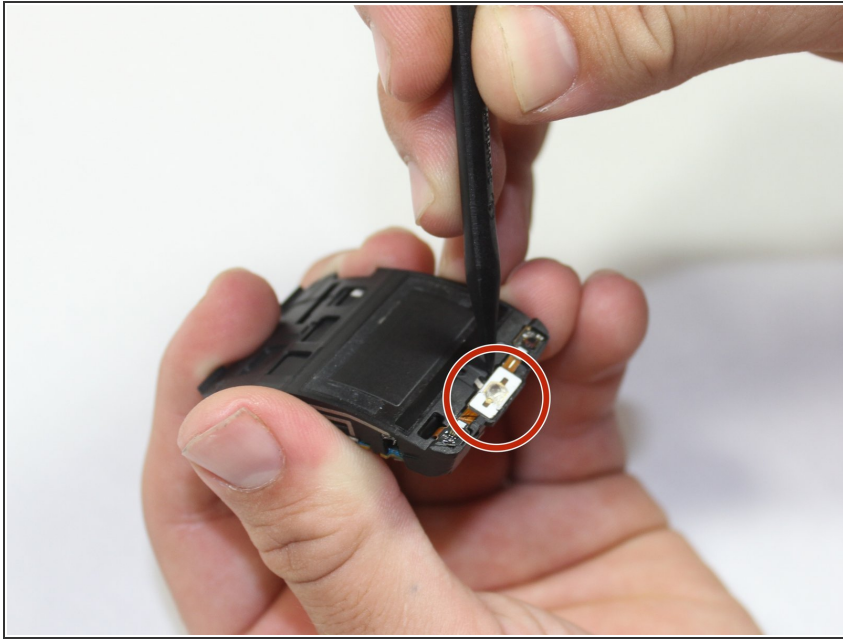
## Step 8



- Use a plastic opening tool to gently pry up on the home ribbon connector.



## Step 9



- Use the spudger to pry up the home ribbon assembly.

To reassemble your device, follow these instructions in reverse order.