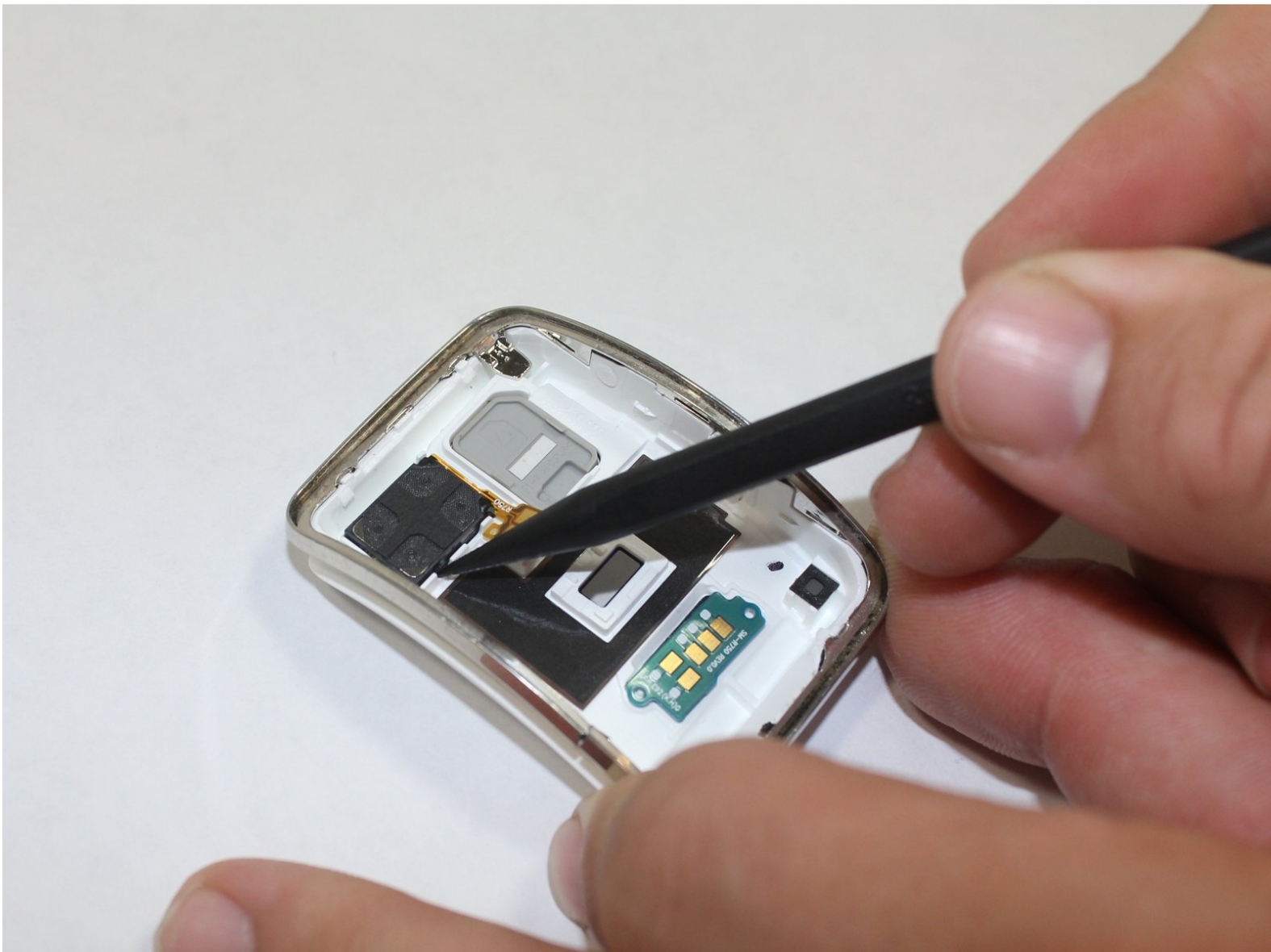




Samsung Gear S Speaker Replacement

If your speaker is malfunctioning, you can use this guide to replace it.

Written By: Luis Franco



INTRODUCTION

This guide will show step by step instructions on how to replace the Samsung Gear S speaker.



TOOLS:

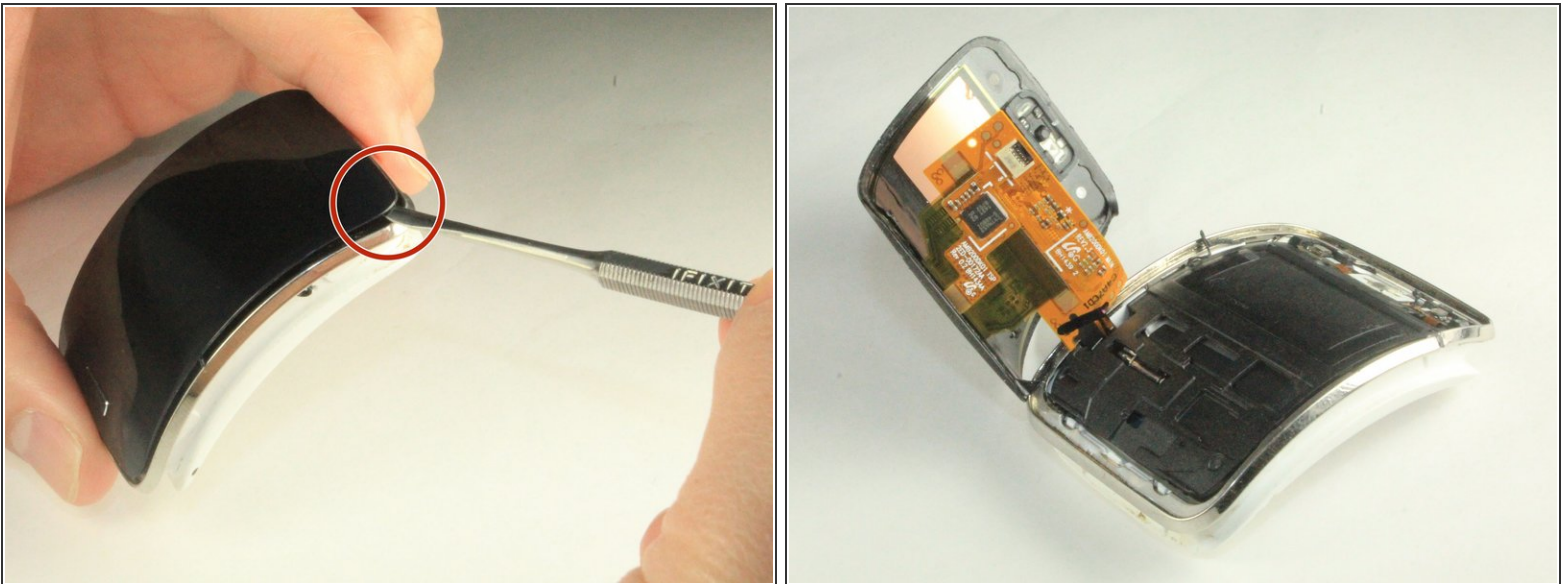
- [iFixit Opening Tools](#) (1)
 - [Spudger](#) (1)
 - [Metal Spudger](#) (1)
-

Step 1 — Display Assembly



- Remove the wrist strap by peeling back the rubber starting from one corner of the watch face. Continue peeling the rubber away from the watch face until the strap is completely off.

Step 2



- Starting from an edge, wedge a metal spudger in between the screen and the chrome trim ring and pry, lifting the screen outwards.

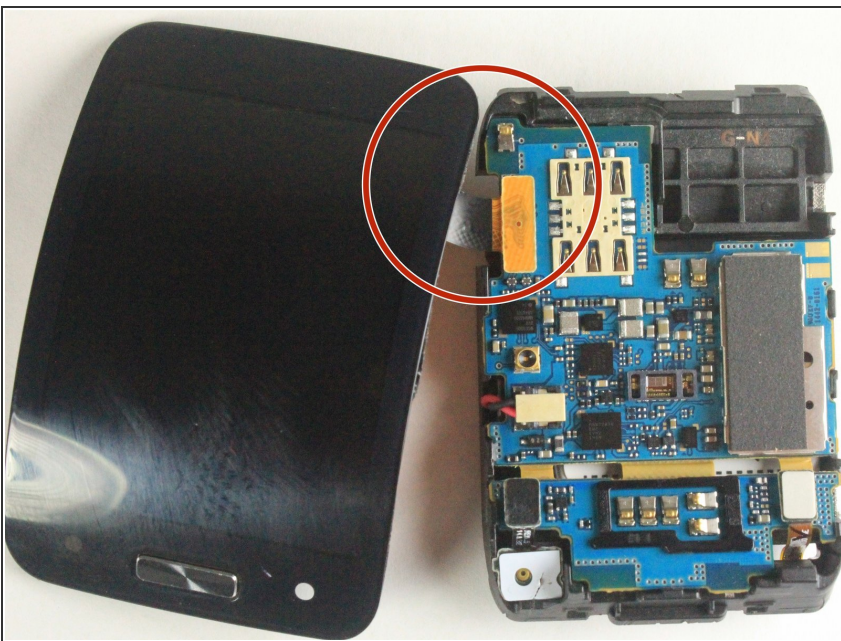
 Some force is needed due to adhesive seal.

Step 3



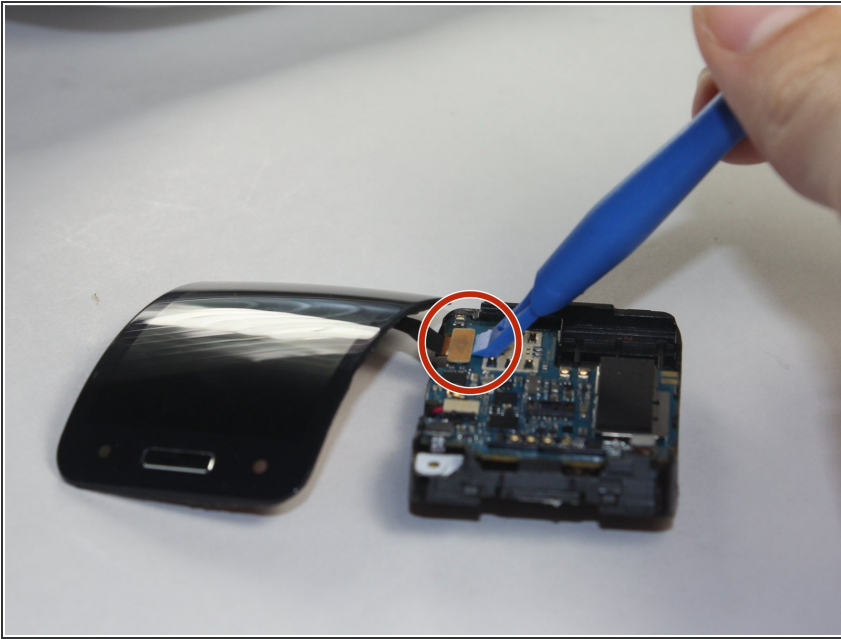
- Use a plastic opening tool to gently pry upwards on the plastic motherboard assembly.

Step 4



- Locate the ribbon assembly attaching the display to the motherboard.

Step 5



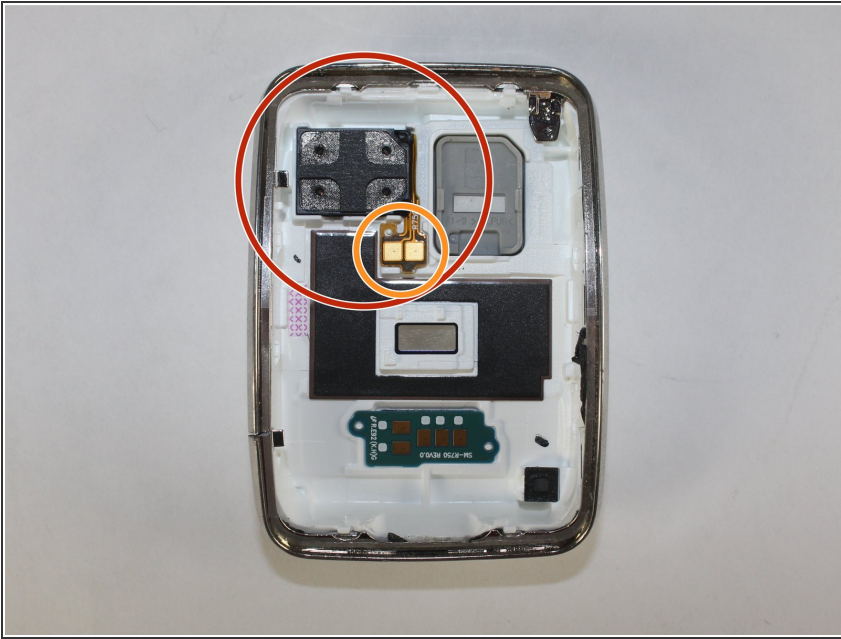
- Use a plastic opening tool to detach the glass screen/ LED Display ribbon connector from the motherboard.

Step 6



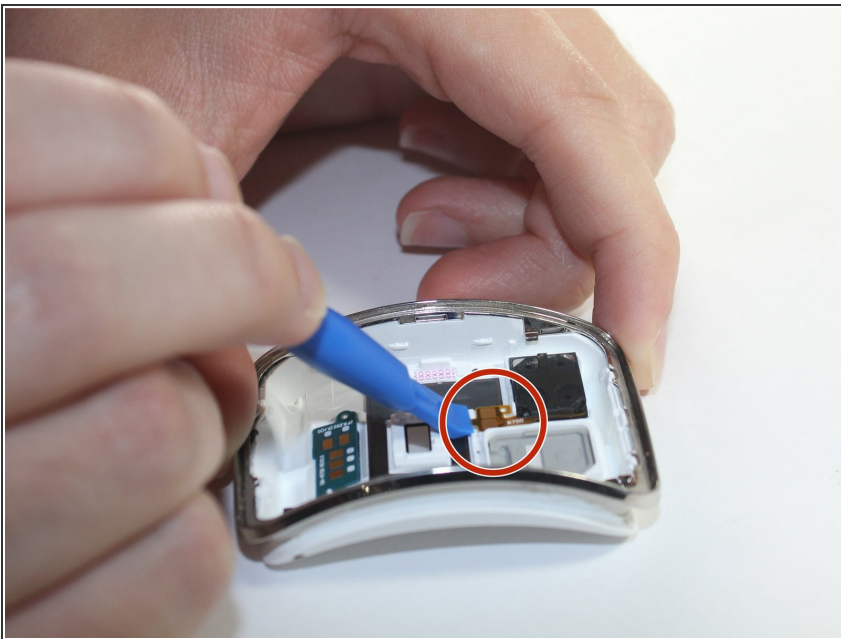
- Now the watch should be in three separate pieces.

Step 7 — Speaker



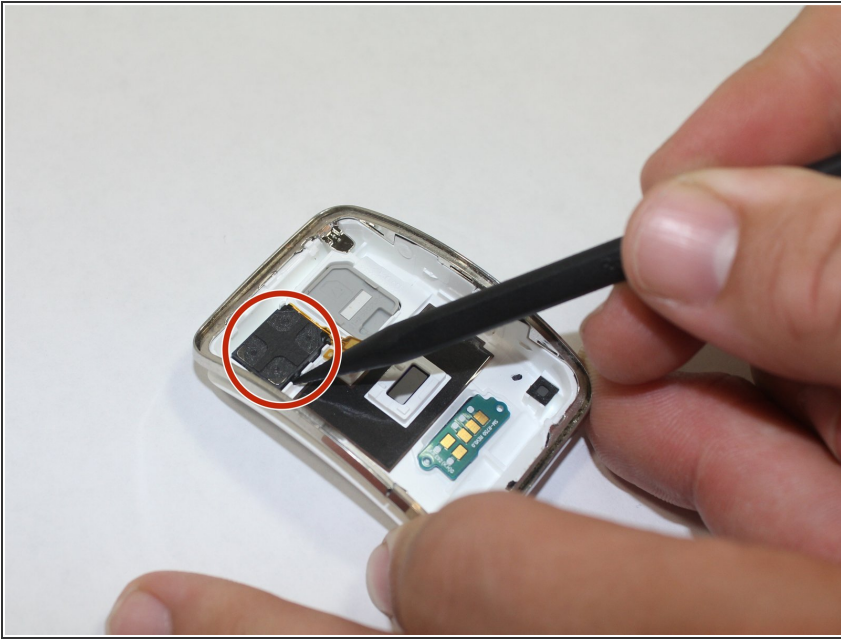
- Locate the speaker in the upper left corner of the housing.
- Locate the speaker ribbon connector directly below the speaker.

Step 8



- Use the plastic opening tool to gently pry upwards on the speaker's ribbon connector.

Step 9



- Use the spudger to gently pry upwards on the speaker housing.
- ⓘ Note: The speaker housing is attached with adhesive, therefore, some force is required.

To reassemble your device, follow these instructions in reverse order.