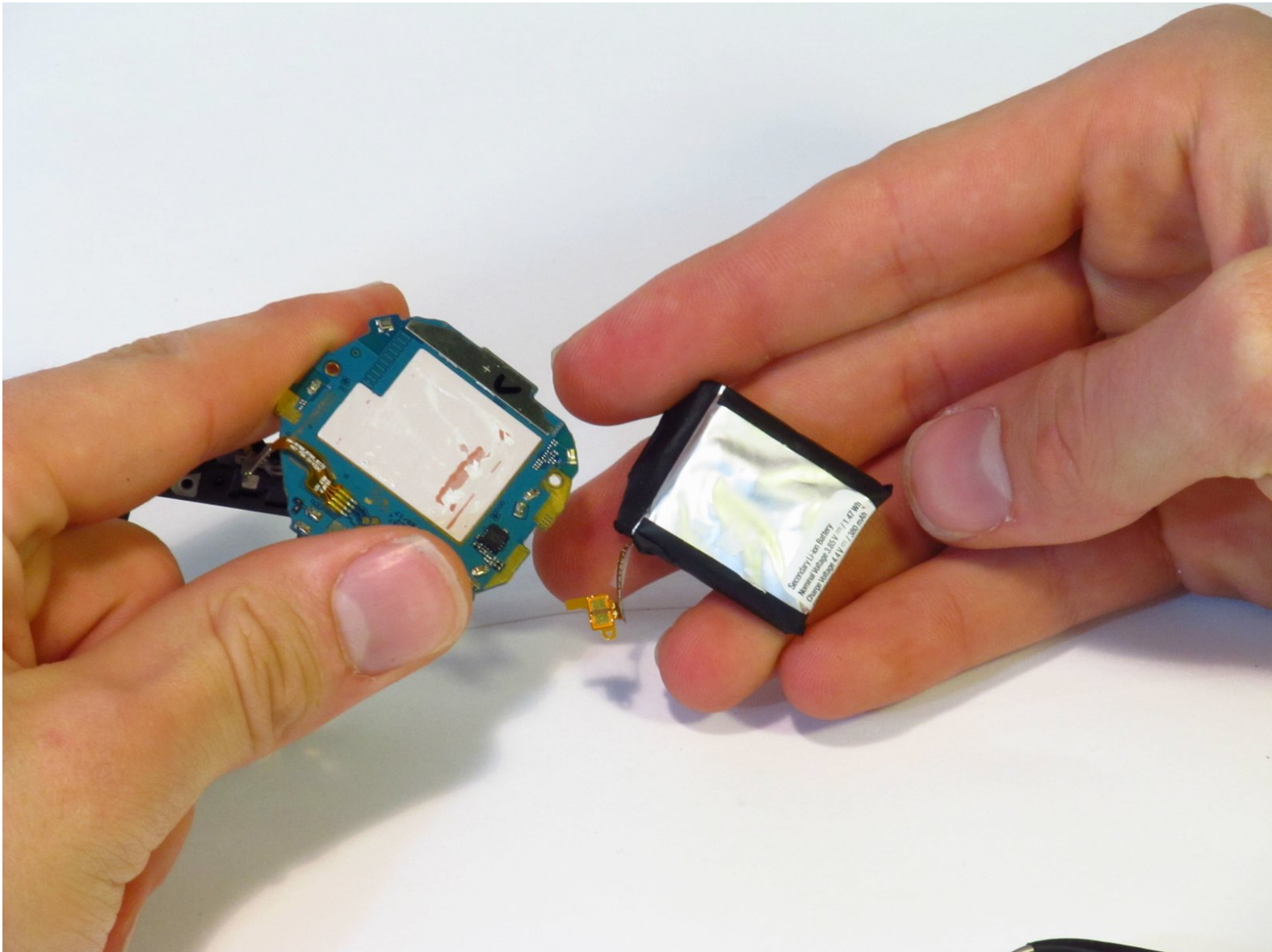




# Samsung Gear S3 Frontier Battery Replacement

Battery replacement guide for Samsung Gear S3 Frontier.

Written By: William Hurty



## INTRODUCTION

If your battery is dead, damaged, or simply dies too quickly then use this guide to replace it. Be cautious as to not damage the ribbon cable or to puncture the battery.



### TOOLS:

- [Metal Spudger](#) (1)
- [Spudger](#) (1)
- [Tri-point Y00 Screwdriver](#) (1)
- [JIS #00 Screwdriver](#) (1)



### PARTS:

- [Samsung Gear S3 Replacement Battery](#) (1)

## Step 1 — Back Cover



- Place the watch screen-down so that its back cover is showing.

## Step 2



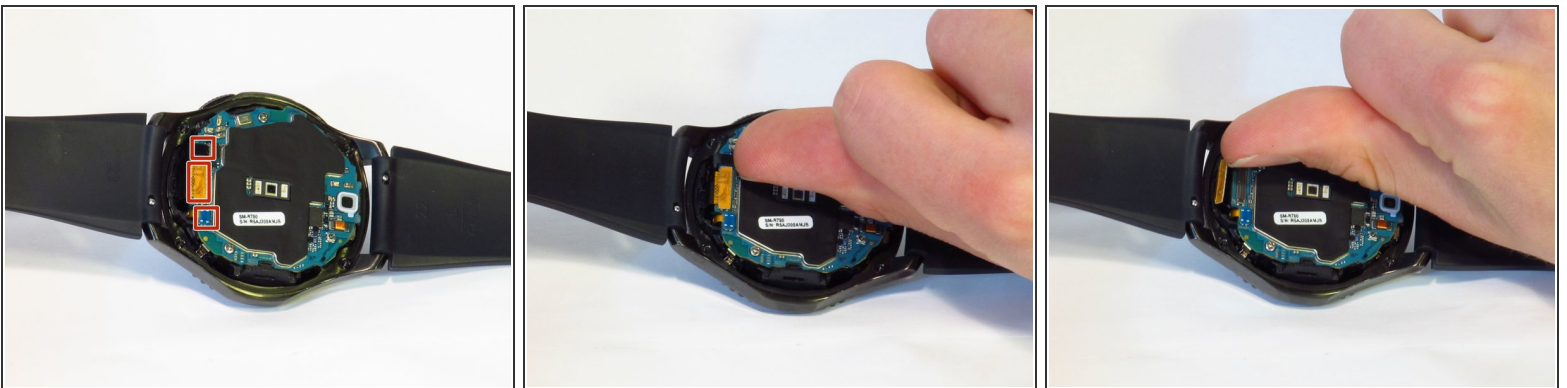
- Remove the four 4.2mm screws with a Y00 screwdriver.

### Step 3



- Wedge the metal spudger in between the back cover and the frame along the seam.
- Use force to pry the back cover away from the main watch frame.
- ⓘ This step requires a lot of force. You can use a Jimmy in place of a metal spudger to make the process easier.
- ⚠ This step will ruin the water-proof seal.

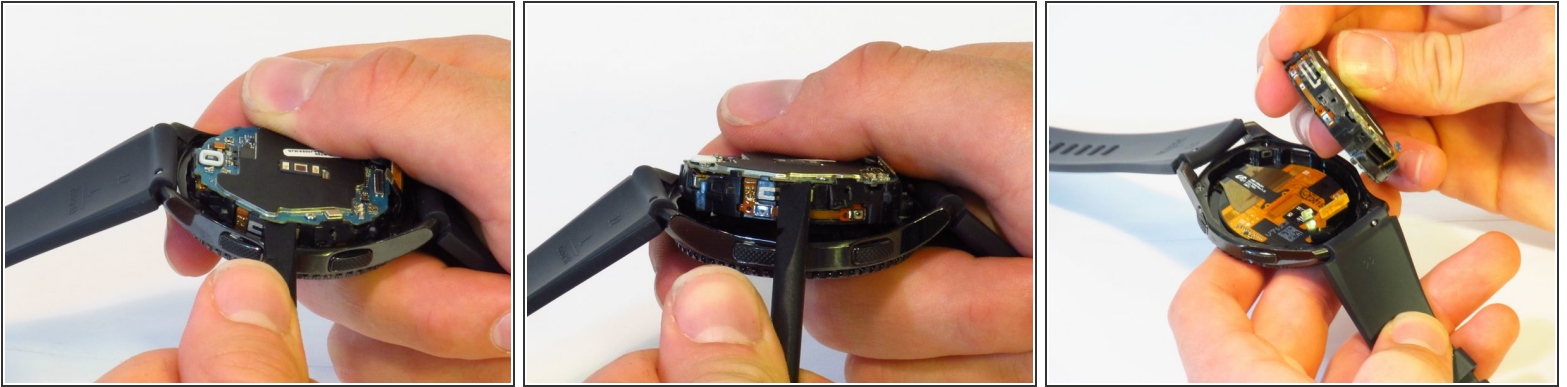
### Step 4 — Front Screen Assembly



- Detach the three connectors on the motherboard using your fingernail.
- ⓘ The connectors are easy to pop off. Minimal force is necessary.

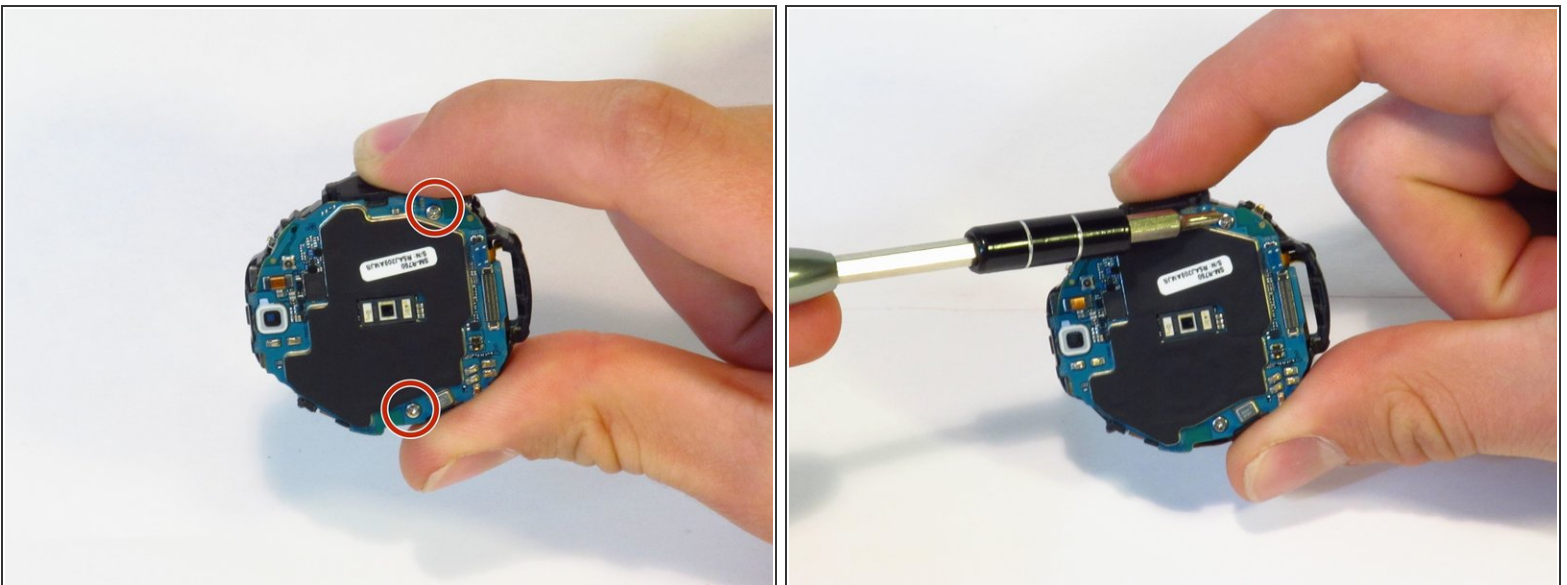


## Step 5



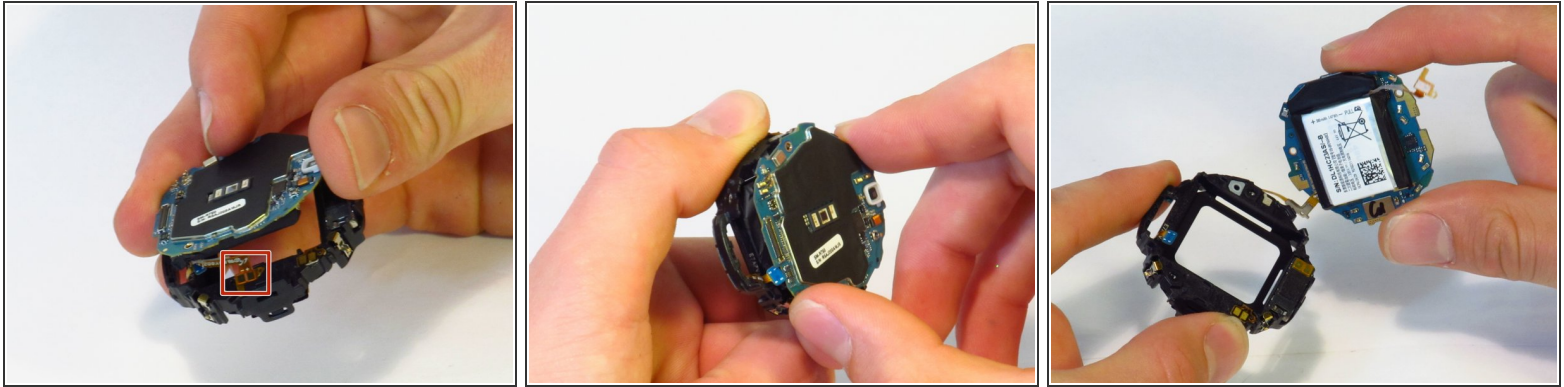
- Separate the motherboard and front screen assembly using a spudger.

## Step 6 — Battery



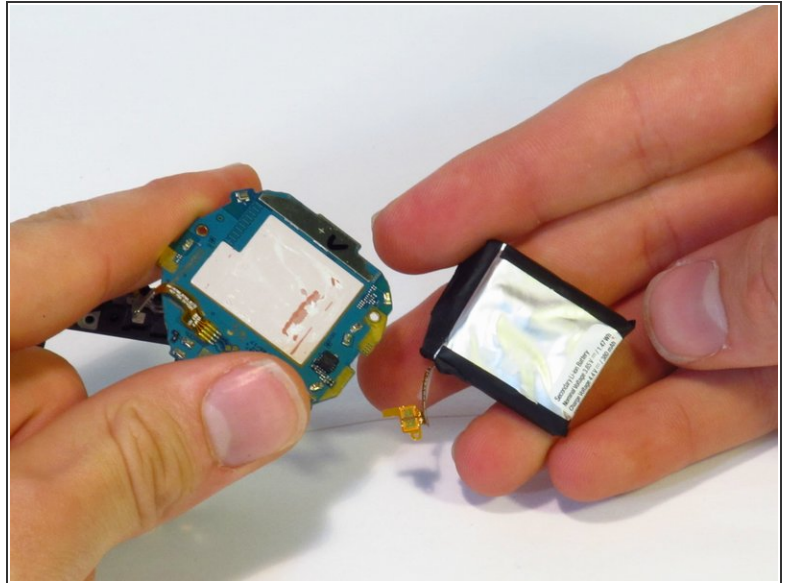
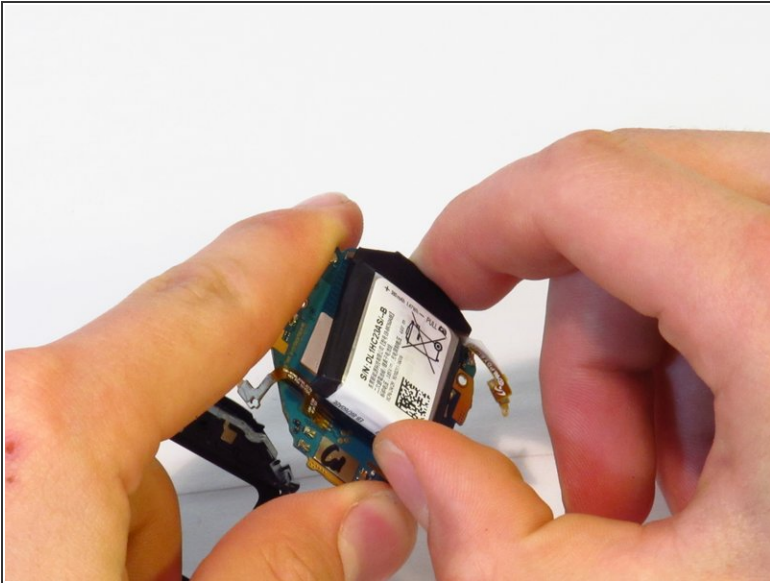
- Using a JIS #00 screwdriver, remove the two 4.5 mm screws.

## Step 7



- Disconnect the battery ribbon cable from bracket.
- Separate the chassis from the motherboard.
- ⓘ Be careful with the battery ribbon cable, as it is very easy to break (ours did when disassembling).
- ★ Note how the end of the ribbon cable seats in the plastic chassis. Look for the plastic pin on the chassis when re-seating.

## Step 8



- Separate the battery from the motherboard.
  - ⓘ The battery and the motherboard are secured with adhesive; some force is needed.
  - ⚠ Lithium-ion batteries are potentially dangerous. Handle with extreme care and do not puncture the battery.

To reassemble your device, follow these instructions in reverse order.