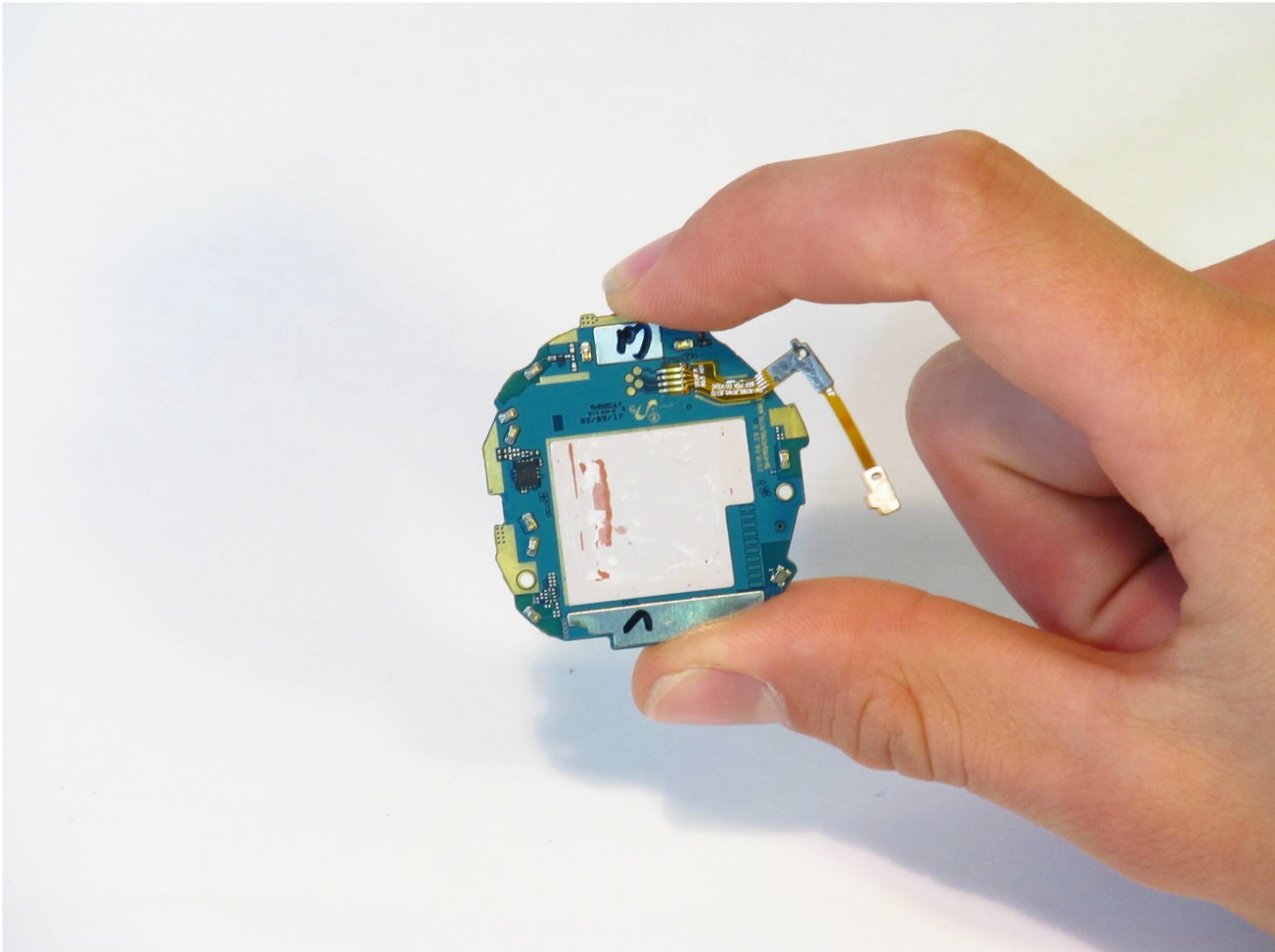




Samsung Gear S3 Frontier Motherboard Replacement

Samsung Gear S3 Frontier motherboard replacement guide.

Written By: William Hurty



INTRODUCTION

Is your device completely unresponsive? Did all of the other troubleshooting and replacement guides not fix your problem? If so, there's a good chance your motherboard needs to be replaced. Follow this guide.



TOOLS:

- [JIS #00 Screwdriver](#) (1)
 - [Metal Spudger](#) (1)
 - [Spudger](#) (1)
 - [Tri-point Y00 Screwdriver](#) (1)
 - [Tweezers](#) (1)
-

Step 1 — Back Cover



- Place the watch screen-down so that its back cover is showing.

Step 2



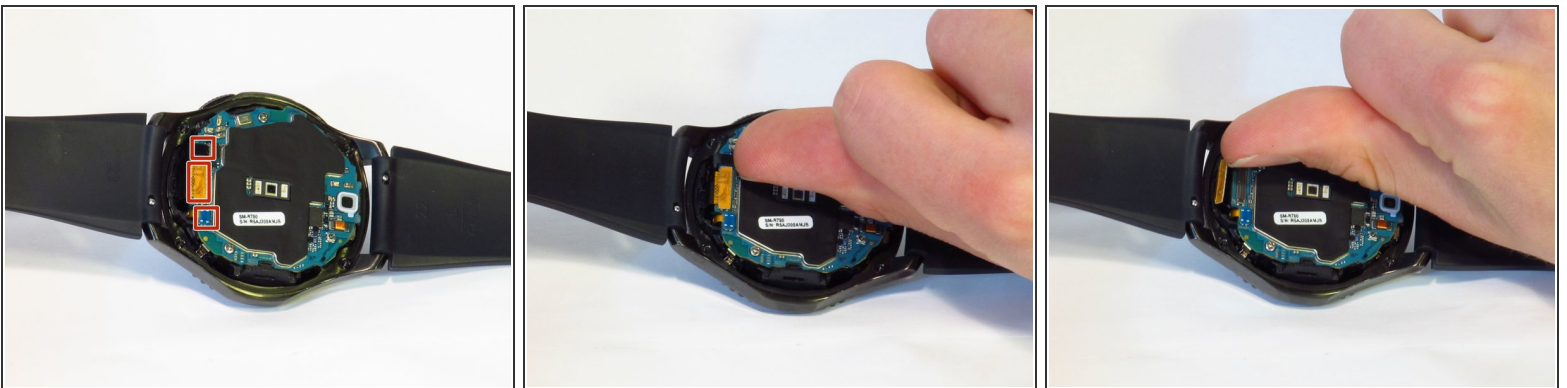
- Remove the four 4.2mm screws with a Y00 screwdriver.

Step 3



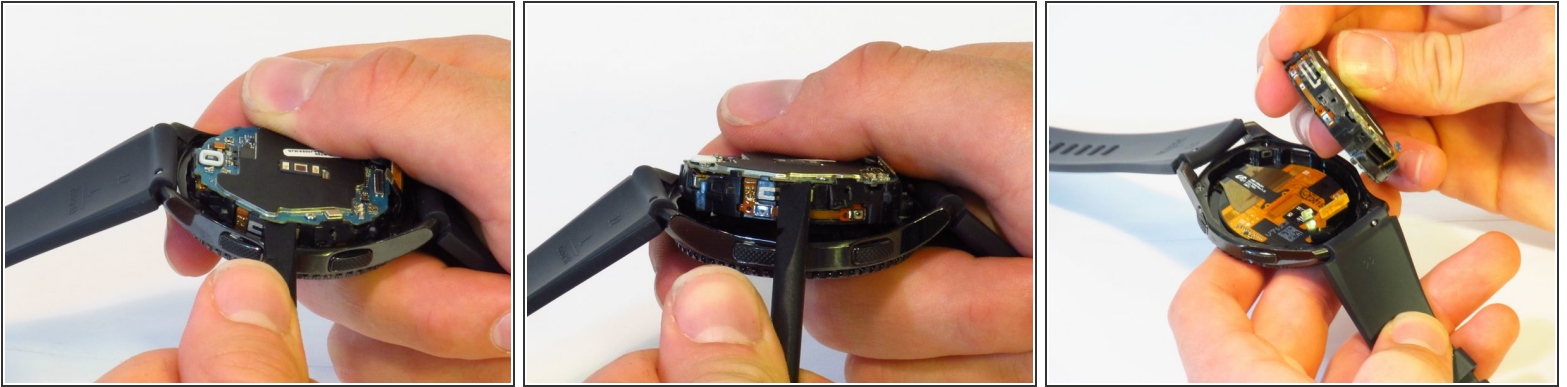
- Wedge the metal spudger in between the back cover and the frame along the seam.
- Use force to pry the back cover away from the main watch frame.
- ⓘ This step requires a lot of force. You can use a Jimmy in place of a metal spudger to make the process easier.
- ⚠ This step will ruin the water-proof seal.

Step 4 — Front Screen Assembly



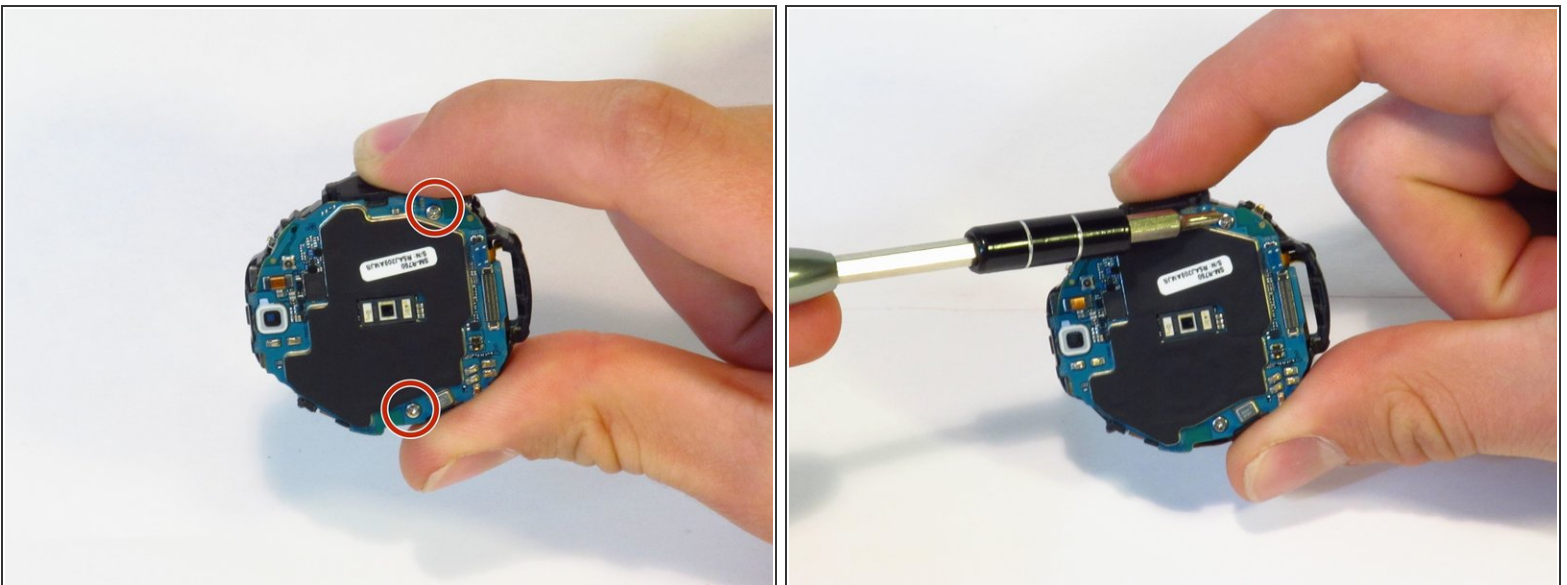
- Detach the three connectors on the motherboard using your fingernail.
- ⓘ The connectors are easy to pop off. Minimal force is necessary.

Step 5



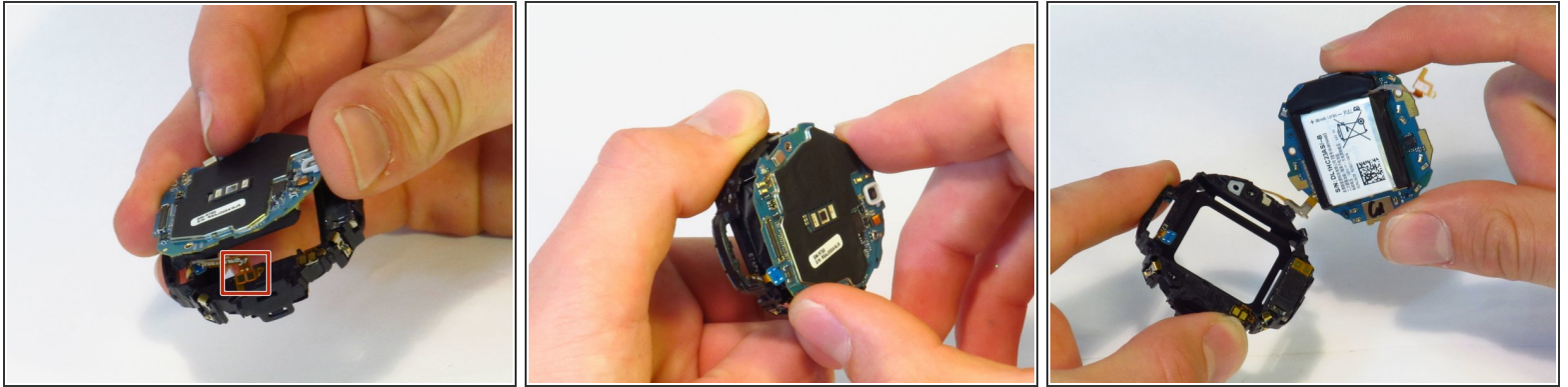
- Separate the motherboard and front screen assembly using a spudger.

Step 6 — Battery



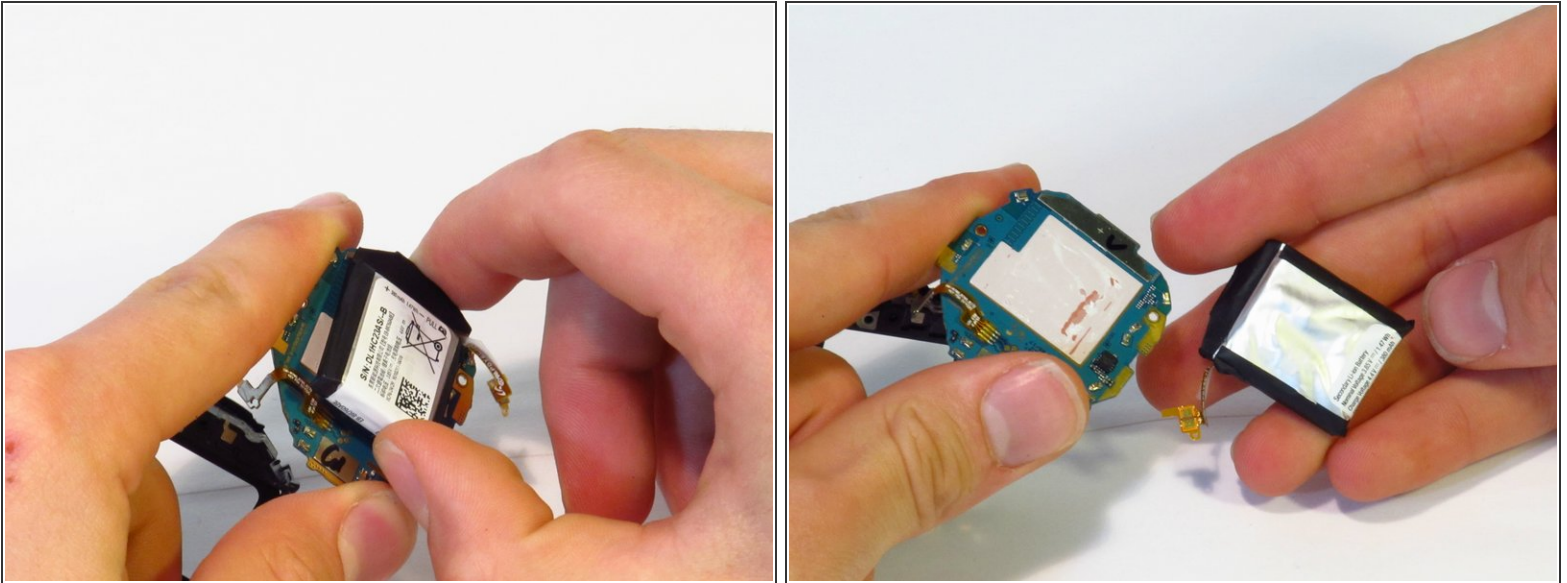
- Using a JIS #00 screwdriver, remove the two 4.5 mm screws.

Step 7



- Disconnect the battery ribbon cable from bracket.
- Separate the chassis from the motherboard.
- ⓘ Be careful with the battery ribbon cable, as it is very easy to break (ours did when disassembling).
- ★ Note how the end of the ribbon cable seats in the plastic chassis. Look for the plastic pin on the chassis when re-seating.

Step 8

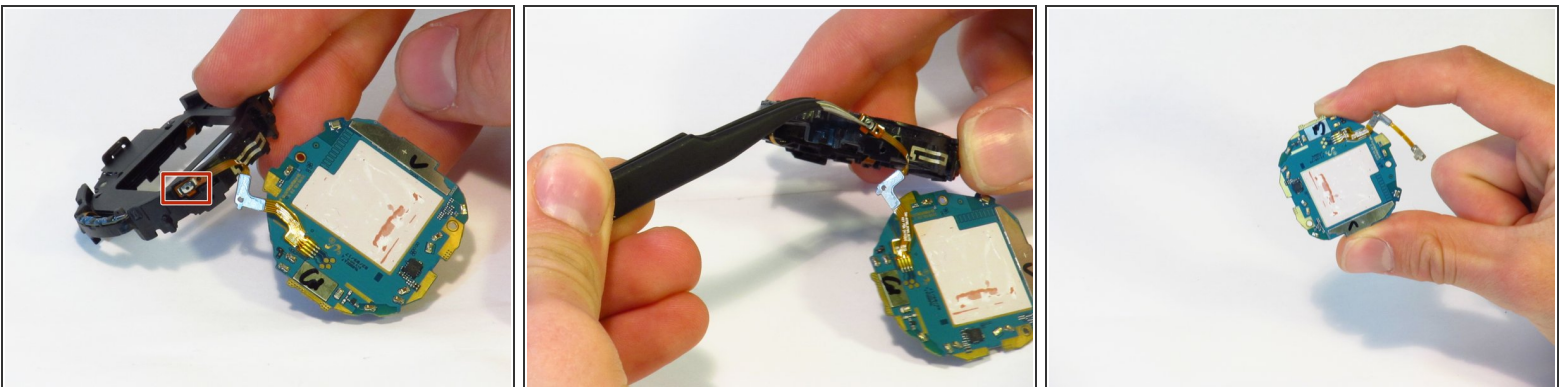


- Separate the battery from the motherboard.

ⓘ The battery and the motherboard are secured with adhesive; some force is needed.

⚠ Lithium-ion batteries are potentially dangerous. Handle with extreme care and do not puncture the battery.

Step 9 — Motherboard



- Remove the battery's cable from the chassis using tweezers.

To reassemble your device, follow these instructions in reverse order.