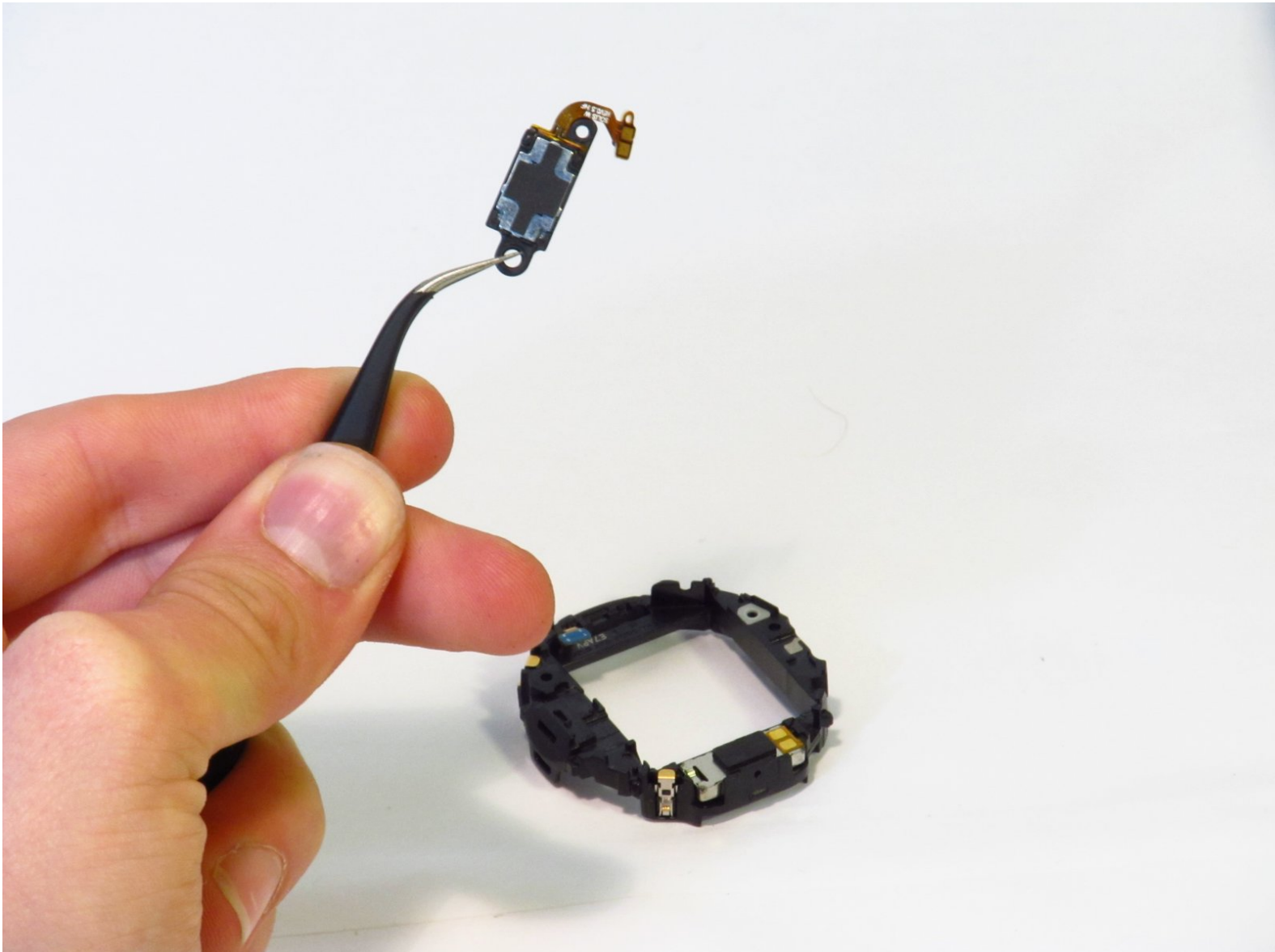




# Samsung Gear S3 Frontier Speaker Replacement

Replace a broken speaker for better sound quality on your Gear S3 Frontier.

Written By: Jimmy Algeo



# INTRODUCTION

If sound from your speaker is muffled or not working at all, use this guide to replace it.



## TOOLS:

- [JIS #00 Screwdriver](#) (1)
  - [Spudger](#) (1)
  - [Metal Spudger](#) (1)
  - [Tri-point Y00 Screwdriver](#) (1)
  - [Tweezers](#) (1)
  - [JIS #000 Screwdriver](#) (1)
-

## Step 1 — Back Cover



- Place the watch screen-down so that its back cover is showing.

## Step 2



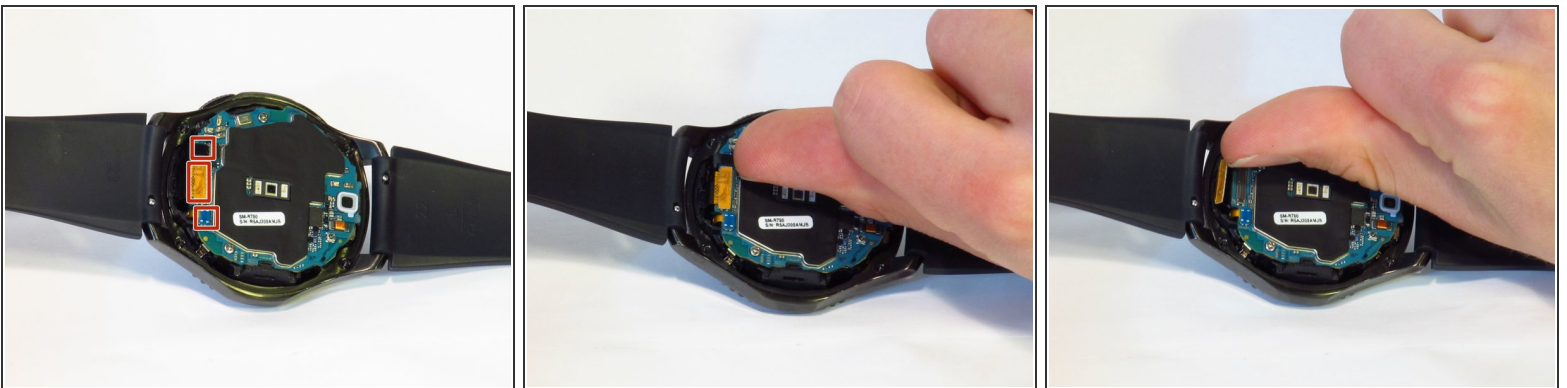
- Remove the four 4.2mm screws with a Y00 screwdriver.

### Step 3



- Wedge the metal spudger in between the back cover and the frame along the seam.
- Use force to pry the back cover away from the main watch frame.
- ⓘ This step requires a lot of force. You can use a Jimmy in place of a metal spudger to make the process easier.
- ⚠ This step will ruin the water-proof seal.

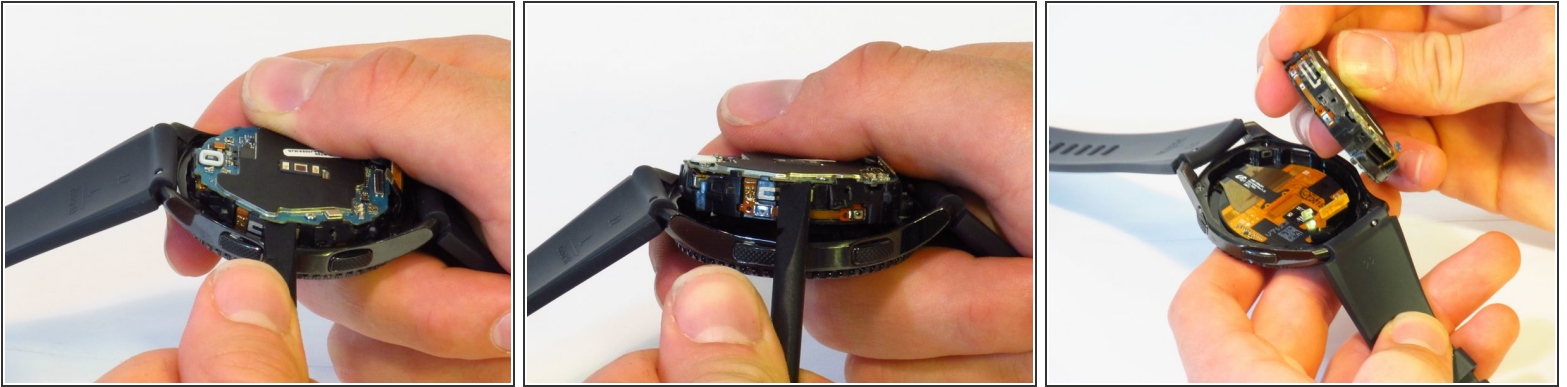
### Step 4 — Front Screen Assembly



- Detach the three connectors on the motherboard using your fingernail.
- ⓘ The connectors are easy to pop off. Minimal force is necessary.

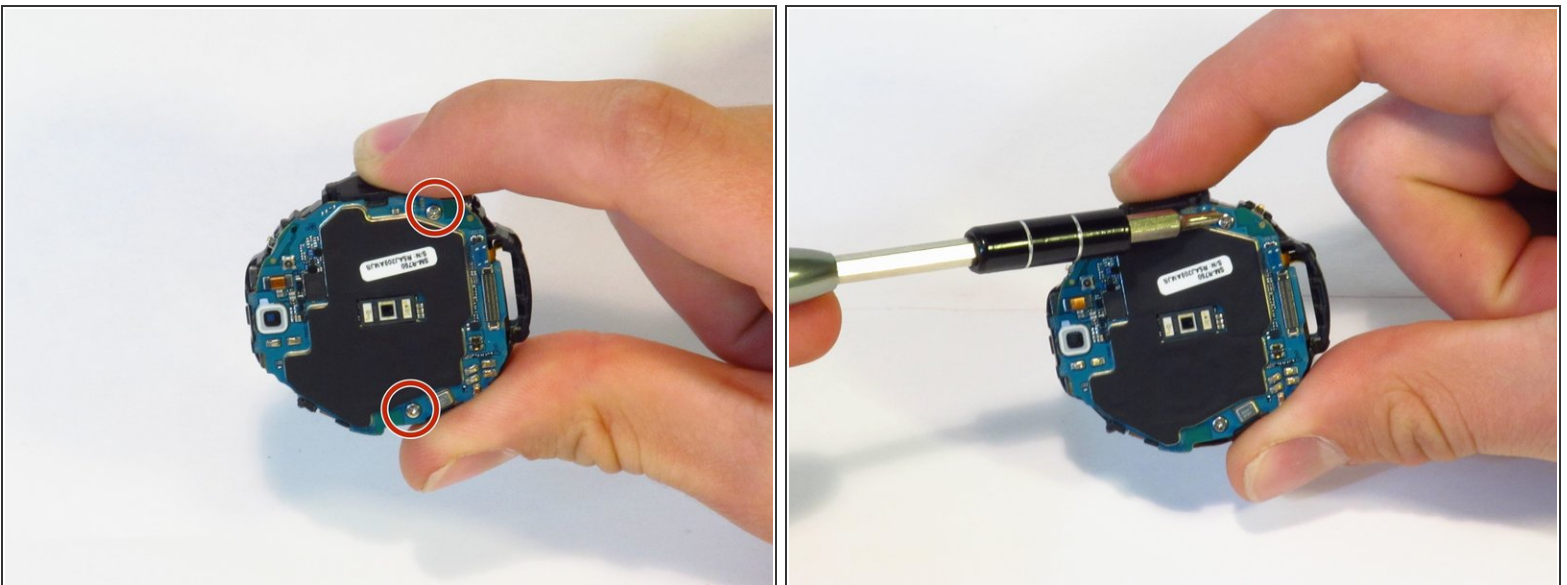


## Step 5



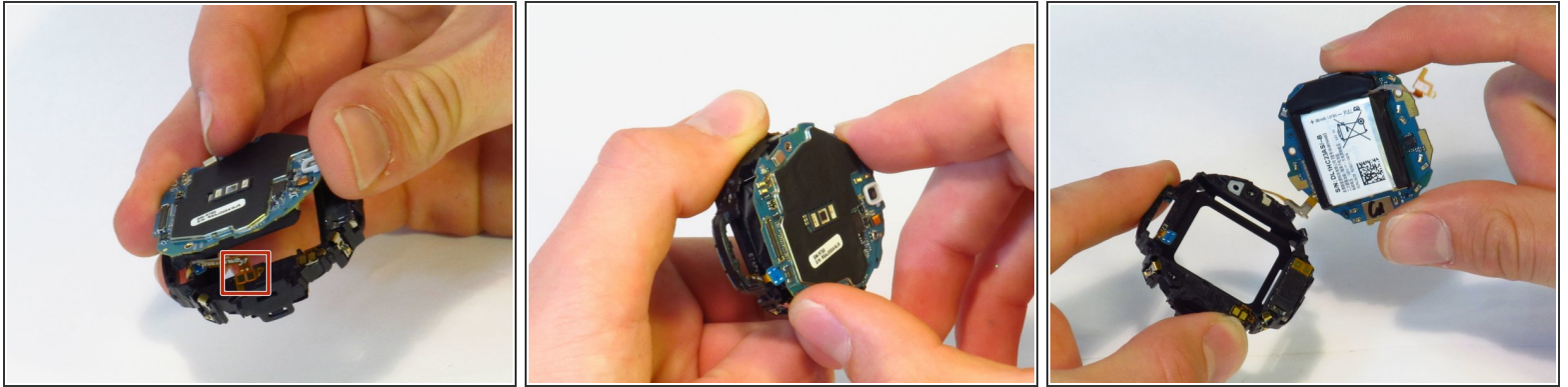
- Separate the motherboard and front screen assembly using a spudger.

## Step 6 — Battery



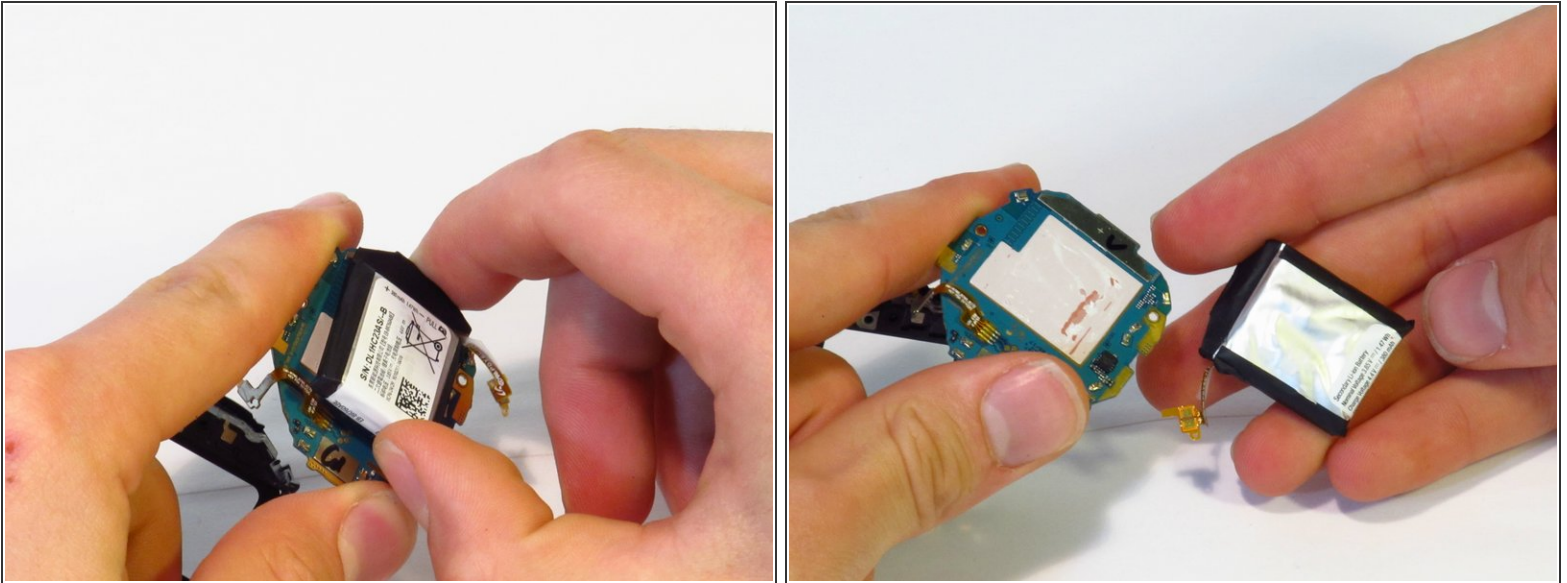
- Using a JIS #00 screwdriver, remove the two 4.5 mm screws.

## Step 7



- Disconnect the battery ribbon cable from bracket.
- Separate the chassis from the motherboard.
- ⓘ Be careful with the battery ribbon cable, as it is very easy to break (ours did when disassembling).
- ★ Note how the end of the ribbon cable seats in the plastic chassis. Look for the plastic pin on the chassis when re-seating.

## Step 8

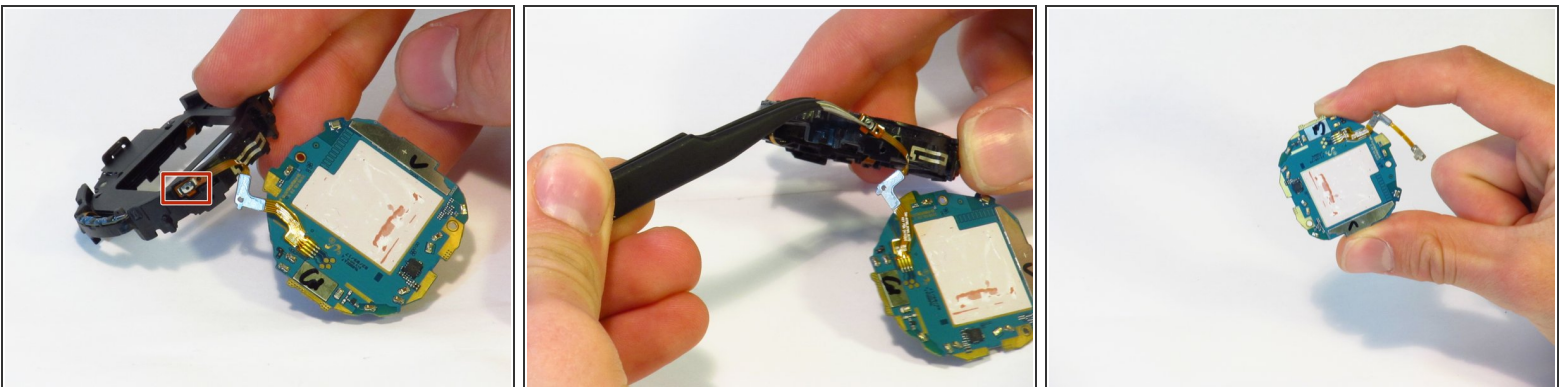


- Separate the battery from the motherboard.

ⓘ The battery and the motherboard are secured with adhesive; some force is needed.

⚠ Lithium-ion batteries are potentially dangerous. Handle with extreme care and do not puncture the battery.

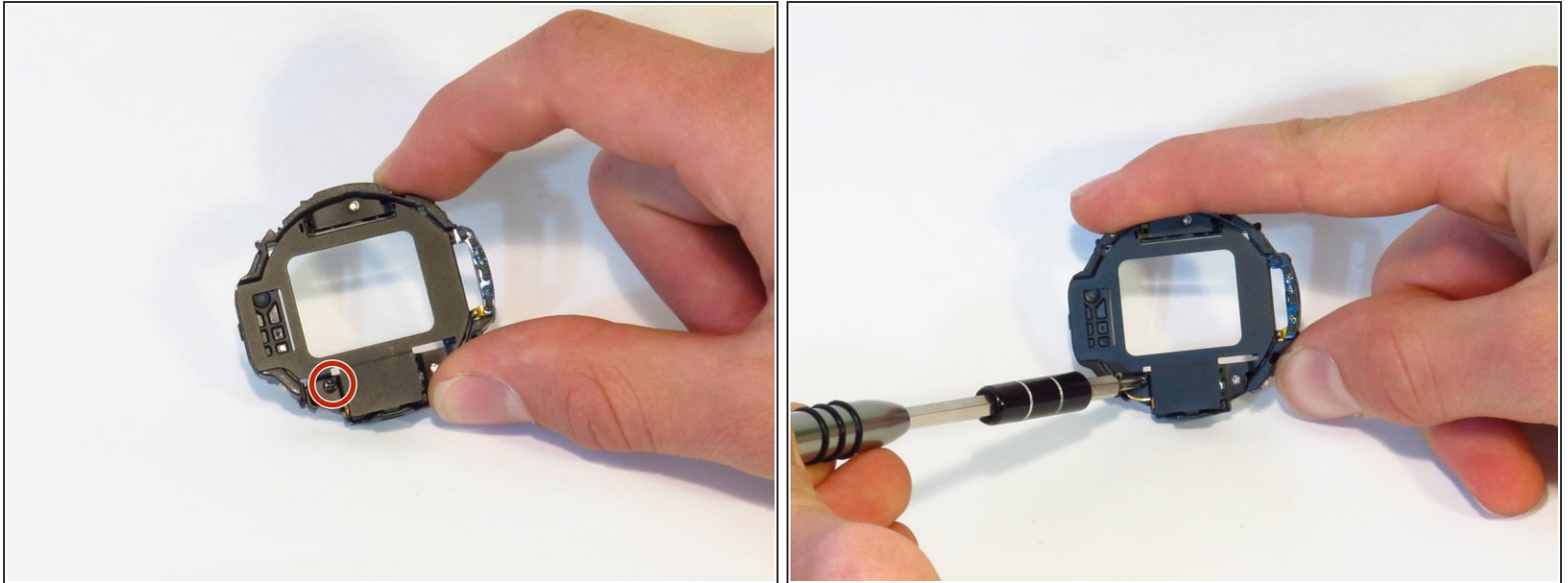
## Step 9 — Motherboard



- Remove the battery's cable from the chassis using tweezers.

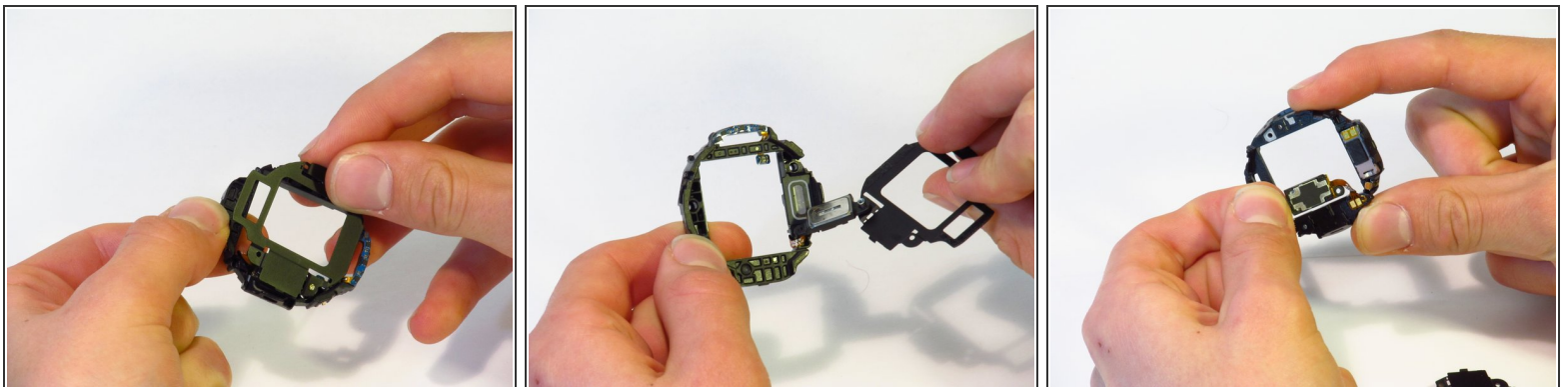


## Step 10 — Speaker



- Remove the single 3.9mm screw with a JIS #000 screwdriver.

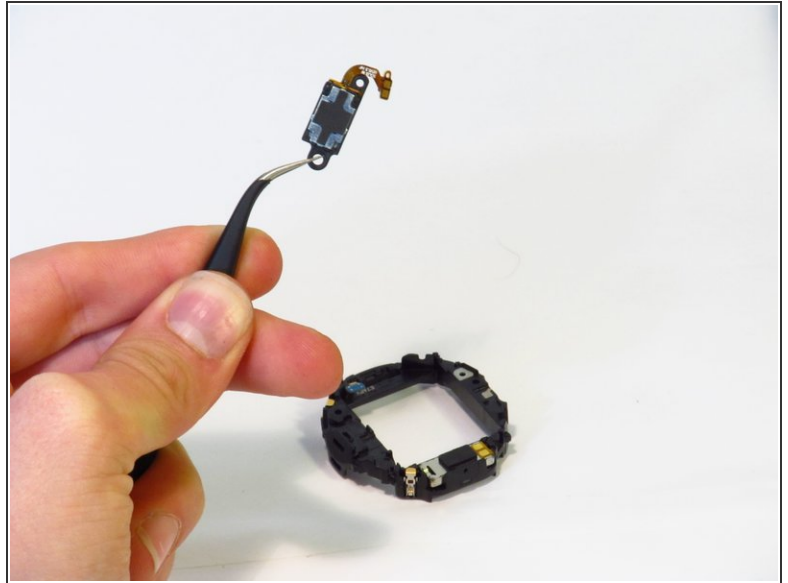
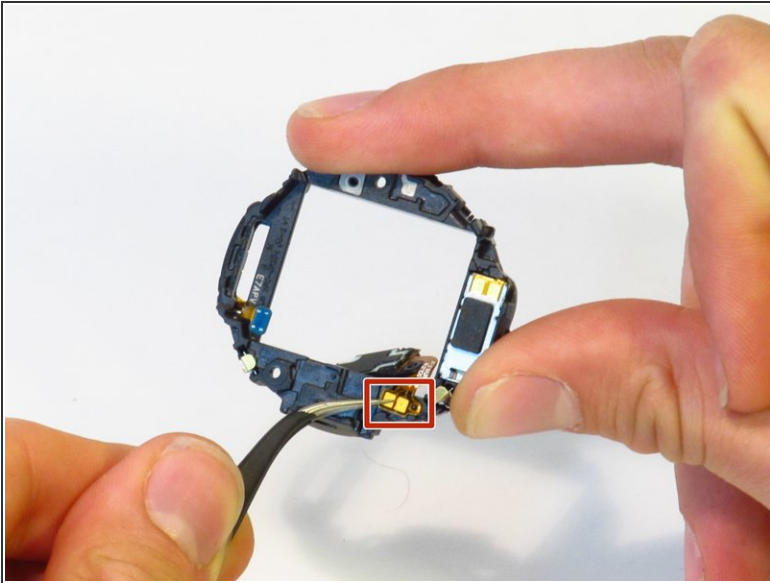
## Step 11



- Separate the two parts of the chassis.
  - ⓘ The speaker is located on the bulkier half of the chassis (see third image).



## Step 12



- Remove the connection from the chassis with tweezers.
- ⚠ Attempting to remove the connection by grabbing the speaker itself may result in damage to the speaker and its connection.
- Separate the speaker from the chassis.

To reassemble your device, follow these instructions in reverse order.