



Samsung Glyde Camera Replacement

Installation procedure for the Samsung Glyde camera.

Written By: Cameron Law



INTRODUCTION

This guide will provide a step by step procedure for installing the camera.



TOOLS:

- [Phillips #00 Screwdriver](#) (1)
 - [iFixit Opening Tools](#) (1)
-

Step 1 — Battery



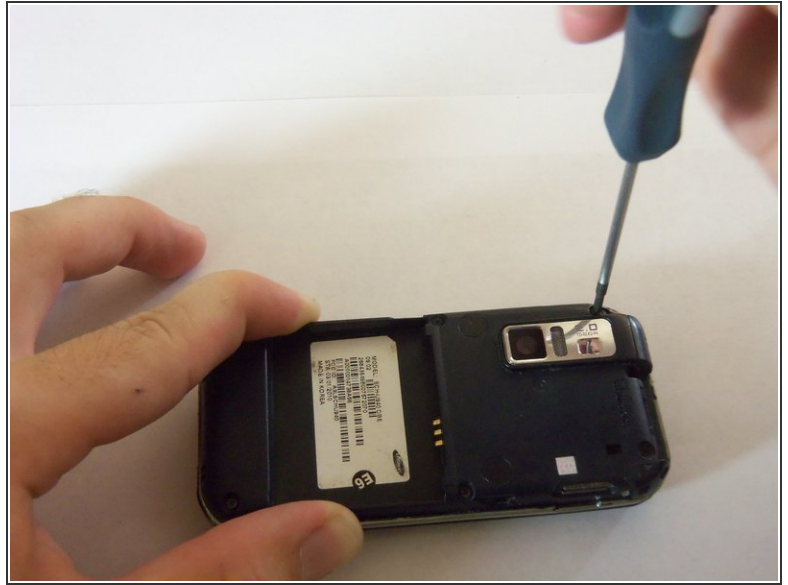
- Using your thumb, press down and slide the back cover away from the camera.

Step 2



- Remove the battery from the phone by using your plastic opening tool to find a gap at any edge of the battery and lifting the battery up.

Step 3 — Motherboard



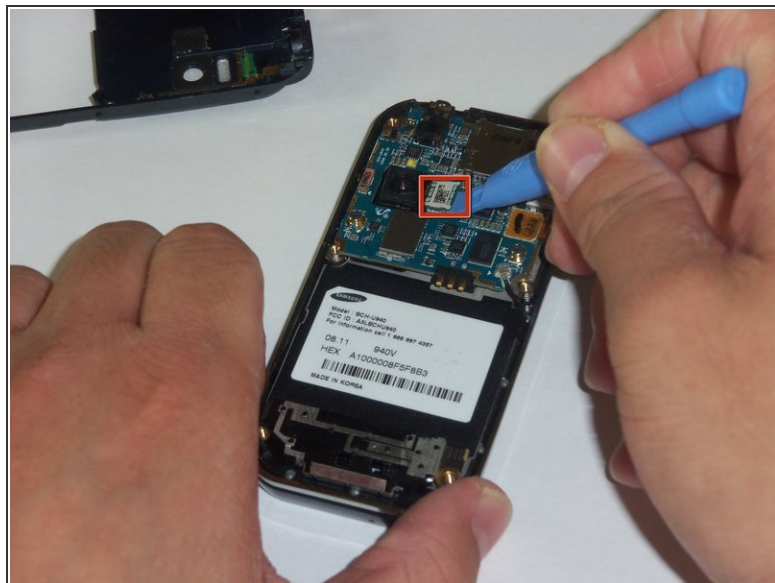
- Using a Phillips#00 screw driver, remove the six 4mm screws holding the back case together.

Step 4



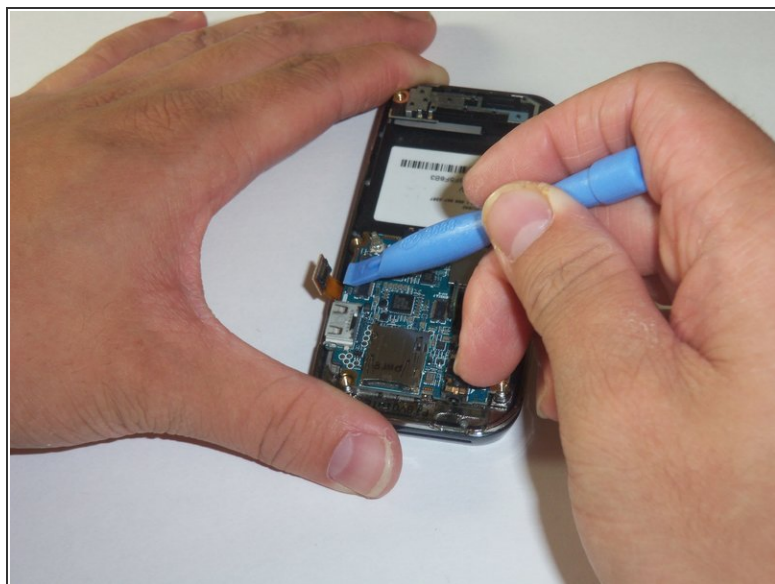
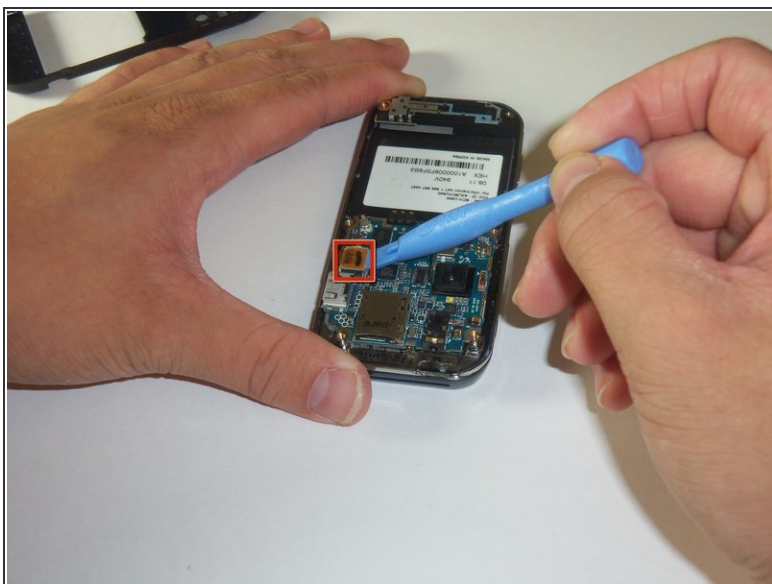
- Use a plastic opening tool to pry the case off. To do this, find a gap on any side of the phone, top preferably, and slip the tip of the tool in the gap
- Now use moderate strength and slowly maneuver the tool around the outside until the case becomes loose.
- Using your fingers, take the case off.

Step 5



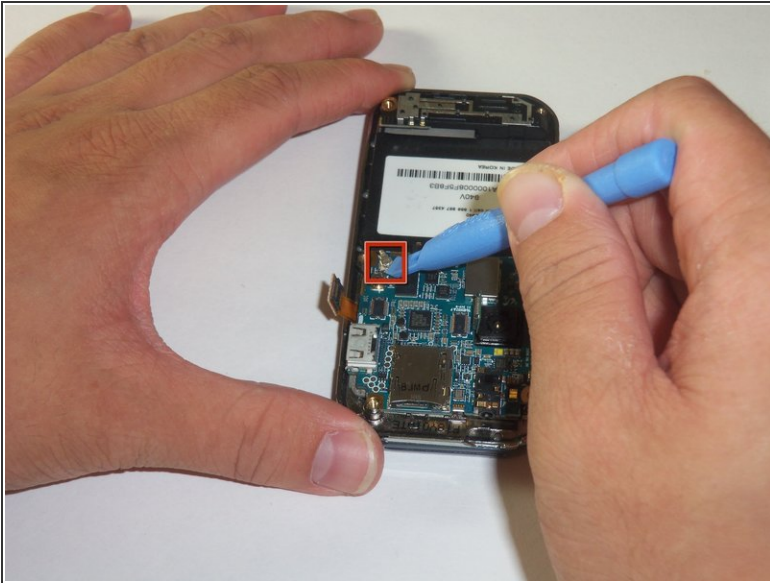
- The green film above the camera is the camera connector to the motherboard.
- Use a plastic opening tool to disconnect the camera connector.

Step 6



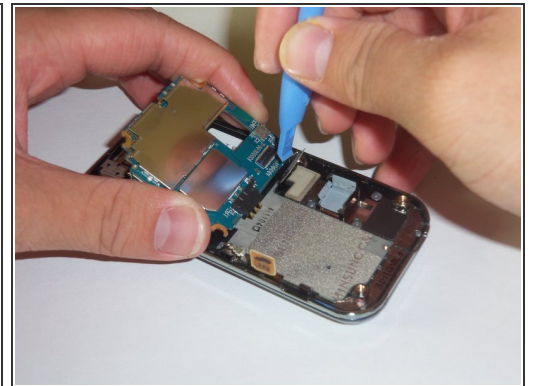
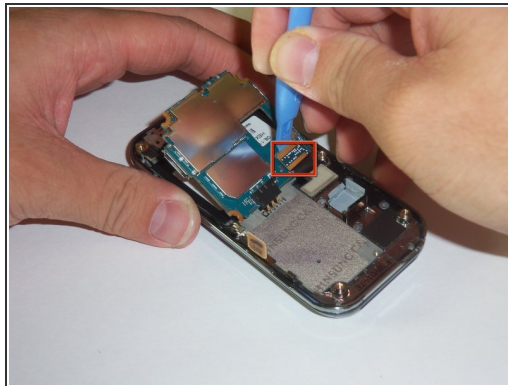
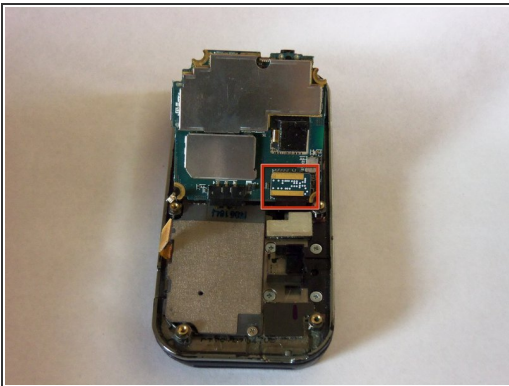
- The golden film connector connects the keyboard to the motherboard.
- Use a plastic opening tool to disconnect the keyboard connector.

Step 7



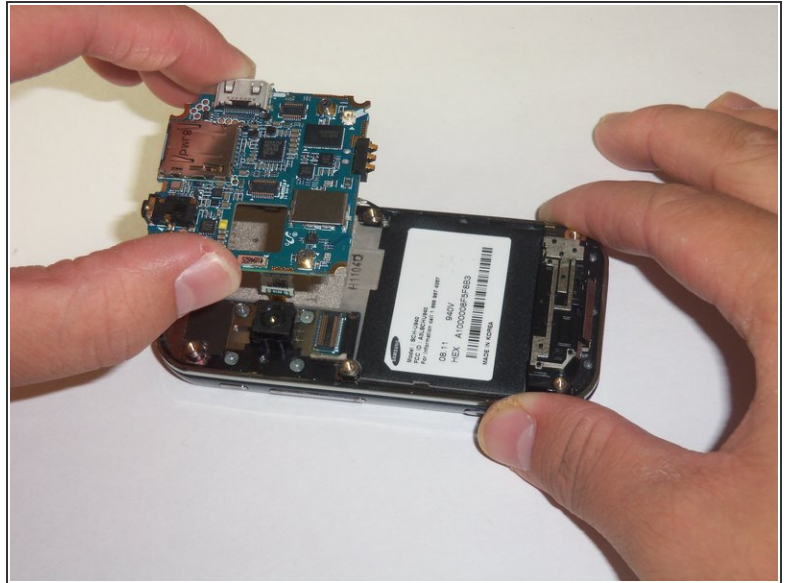
- The circular connector holds the motherboard in place.
- Using a plastic opening tool, disconnect the circular connector.

Step 8



- There is a LCD connector underneath the motherboard.
- Gently lift the far edge of the motherboard upwards toward the center of the phone.
- Using a plastic opening tool, disconnect the LCD connector.

Step 9



- After disconnecting the four connectors, gently lift the motherboard up with your fingers.
- Place the motherboard in a secure area.

Step 10 — Camera



- Use your thumb and index finger to grip the camera connector.
- Pull the camera connector upwards to detach the camera.
- ⓘ The camera was glued on, so this may require moderate strength.

To reassemble your device, follow these instructions in reverse order.