



# Samsung Gravity SGH-T669 Front Glass Assembly Replacement

By the conclusion of this guide you will have taken apart your phone to get to the touchscreen, allowing for it to be replaced.

Written By: Andrew Schneider



## INTRODUCTION

Use this guide to replace your cracked or otherwise damaged front panel, including the front glass, digitizer, and front panel buttons.

---

### TOOLS:

- [Phillips #000 Screwdriver](#) (1)
  - [iFixit Opening Tools](#) (1)
-

## Step 1 — Battery



- ❗ Make sure your phone is powered off.
- Use a plastic opening tool to remove the rear battery cover.

## Step 2



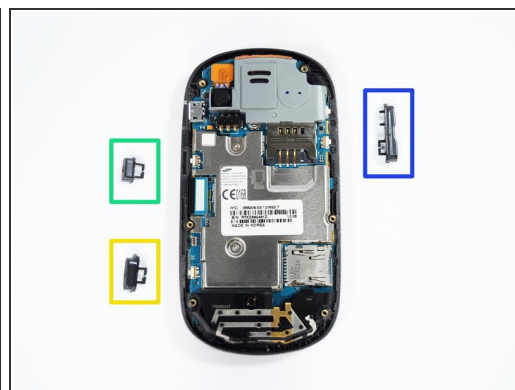
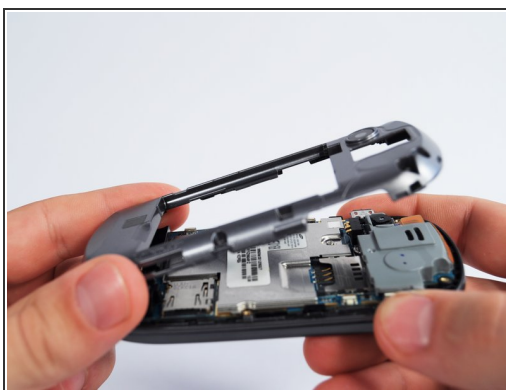
- Remove the battery by pulling up from the bottom right corner.
- Remove the SIM card and the Micro SD card.
  - SIM card
  - Micro SD card

## Step 3 — Casing



- Remove the six 2.8 mm Phillips screws.

## Step 4



- Use a plastic opening tool to pry off the casing.

⚠ The volume button, camera button, and lock button may fall out as you remove the casing. If they are still on the phone, remove them.

- Lock button
- Camera button
- Volume button



## Step 5 — Motherboard



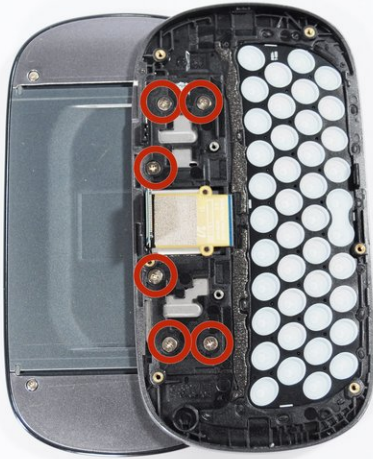
- Disconnect the LCD cable with a plastic opening tool.
- Remove the two 2.8 mm Phillips screws that hold the motherboard in place.

## Step 6



- Remove motherboard.

## Step 7 — Separating the halves



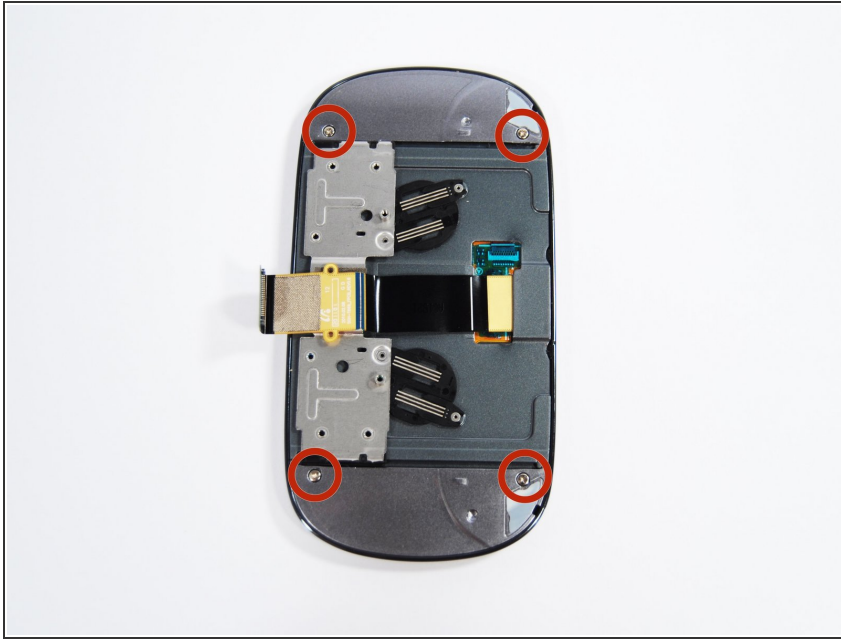
- Remove the six 1.5 mm Phillips screws.
- Very gently peel the LCD cord off the slider assembly.

## Step 8



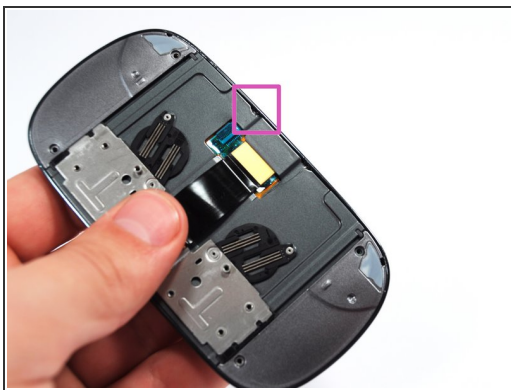
- Remove the keyboard housing from the screen housing.

## Step 9 — Screen casing



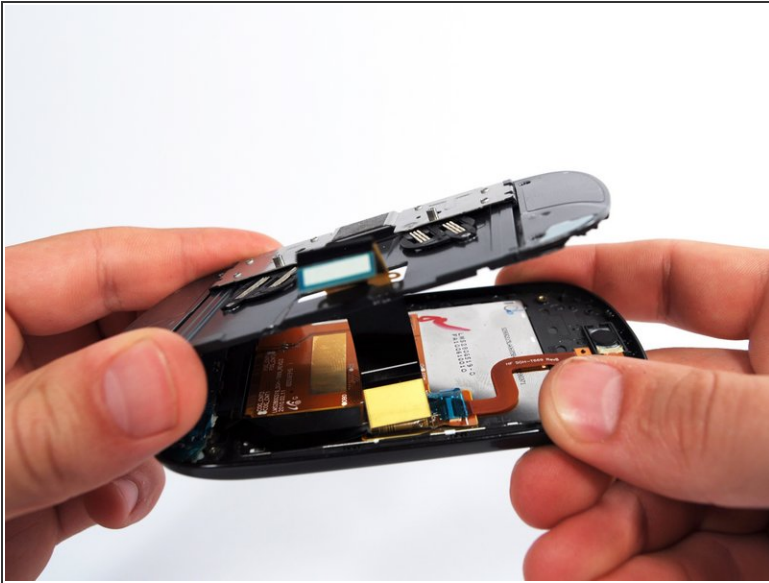
- Remove the four 2.5 mm Phillips screws.

## Step 10



- I found that my plastic opening tool wasn't strong enough (it broke) to pry open this casing.
  - I used a 1.3 mm Flathead screwdriver as an opening tool.
  - After you have gotten under the edge of the back plate, slide your tool along the length of the plate.
- ⚠ Be careful if using a screwdriver to open the casing. While there are a minimal amount of components that can be damaged, caution should be exercised. It is not recommended.

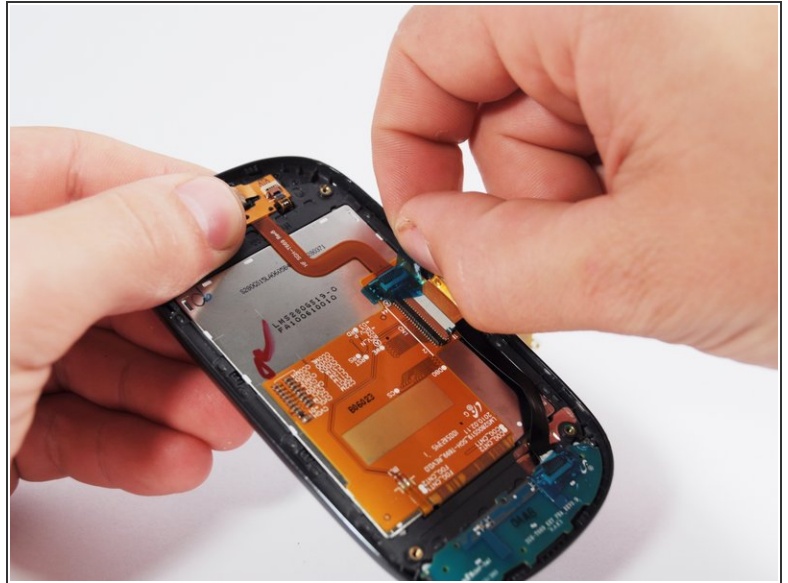
## Step 11



- Remove the cover.
- ⓘ There are four clips on the underside of the cover, shown in the green and yellow boxes.
  - I found these clips to be the hardest to remove.
  - After removing the yellow clips, these should follow easily.

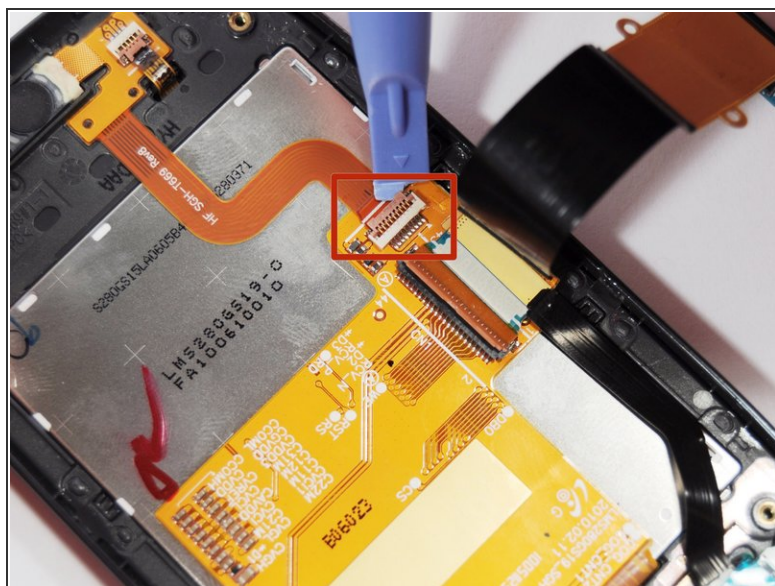
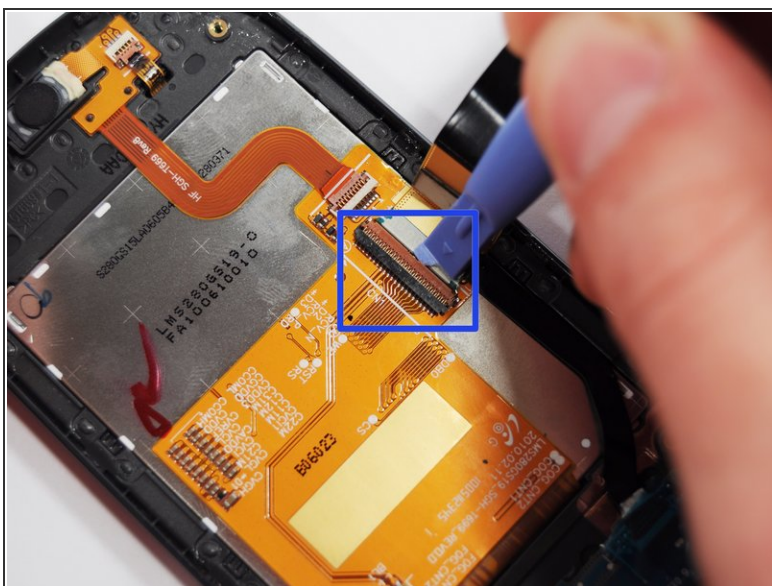


## Step 12 — Remove the LCD



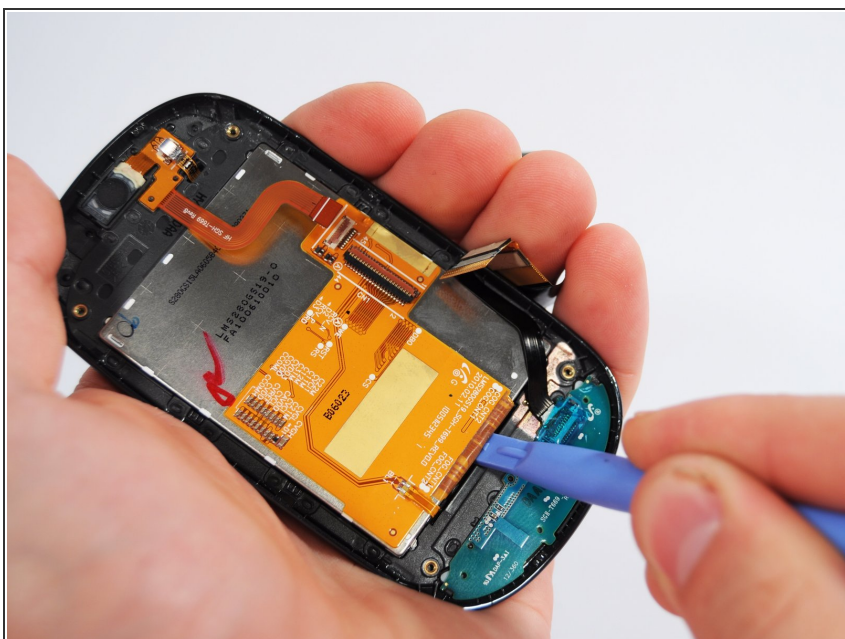
- It's time to take the LCD out.
- Begin by removing the blue piece of tape.

## Step 13



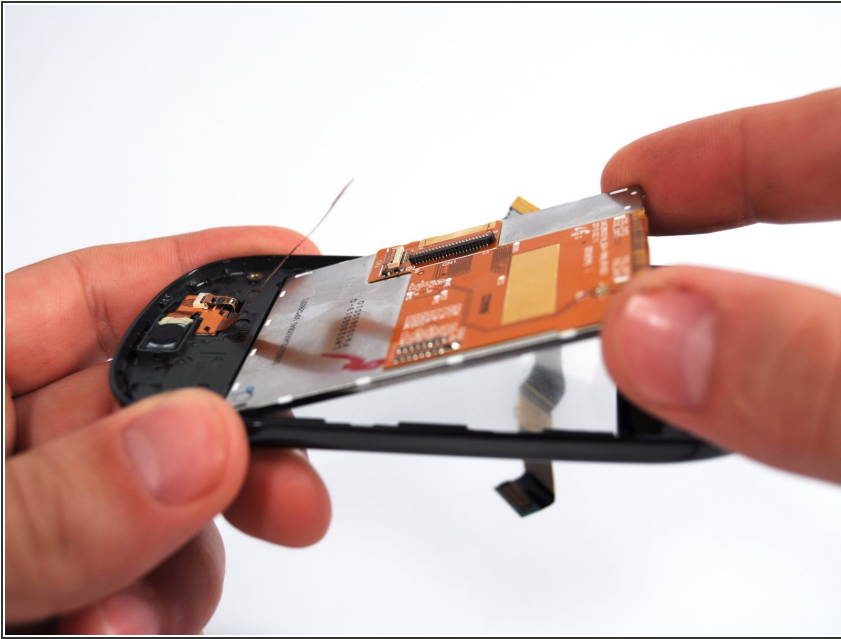
- Disconnect the two ZIF connections using a plastic opening tool.
  - ZIF #1
  - ZIF #2

## Step 14



- Use a plastic opening tool on the bottom of the LCD to pry it off.

## Step 15



- Remove the LCD panel.

To reassemble your device, follow these instructions in reverse order.