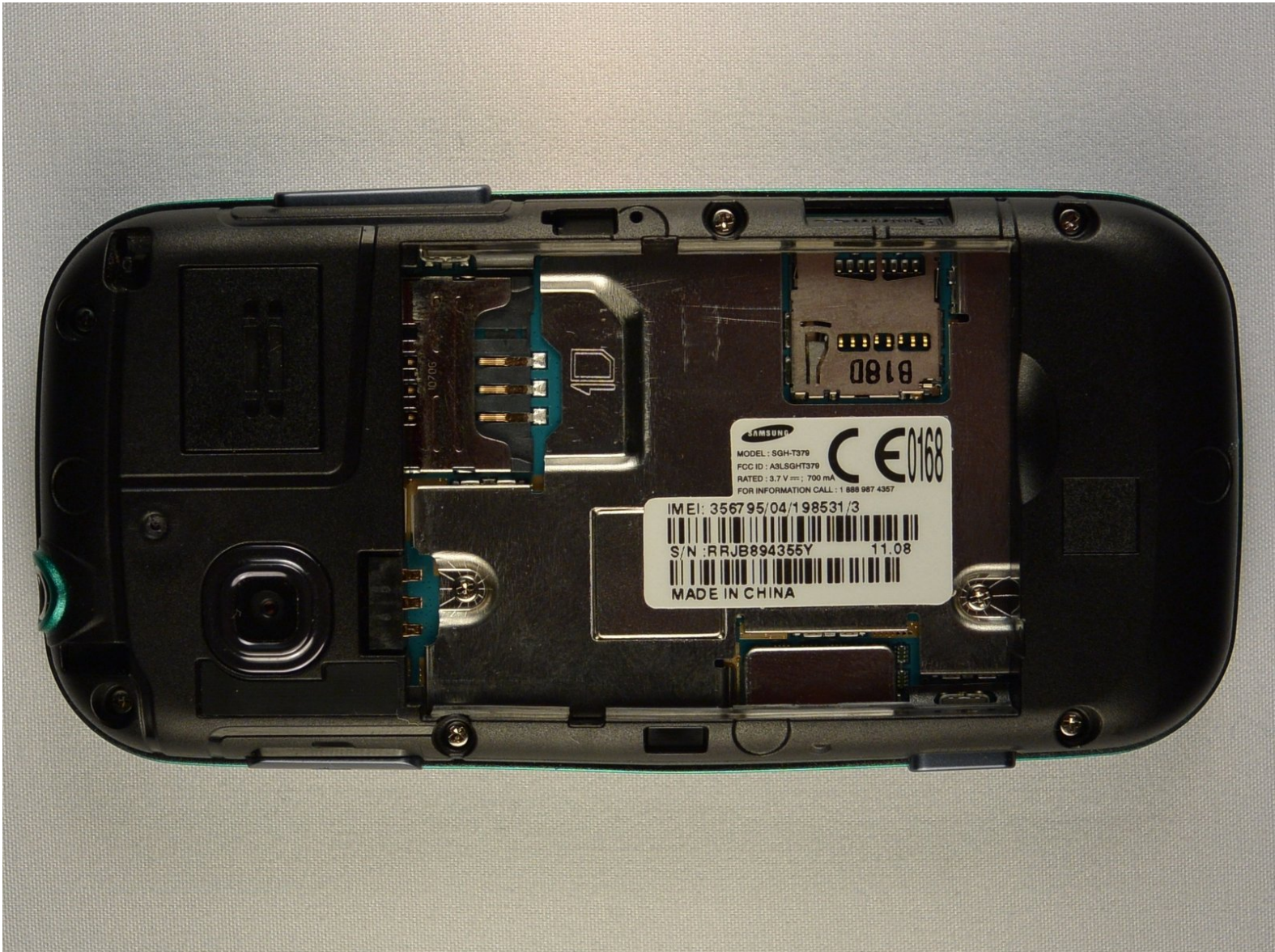




Samsung Gravity TXT Plastic Back Frame Replacement

Prerequisite Only

Written By: Josh Brown



INTRODUCTION

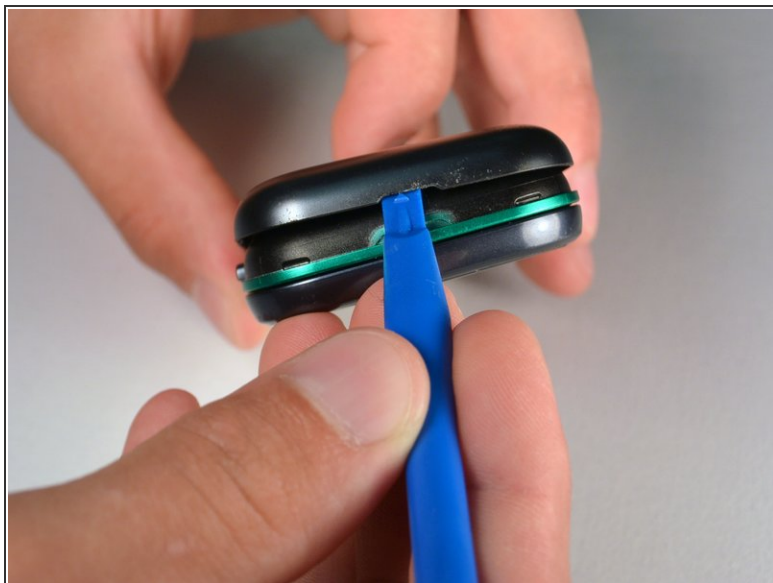
Prerequisite Only



TOOLS:

- [Phillips #00 Screwdriver](#) (1)
 - [Jimmy](#) (1)
 - [iFixit Opening Picks set of 6](#) (1)
 - [iFixit Opening Tools](#) (1)
-

Step 1 — Battery



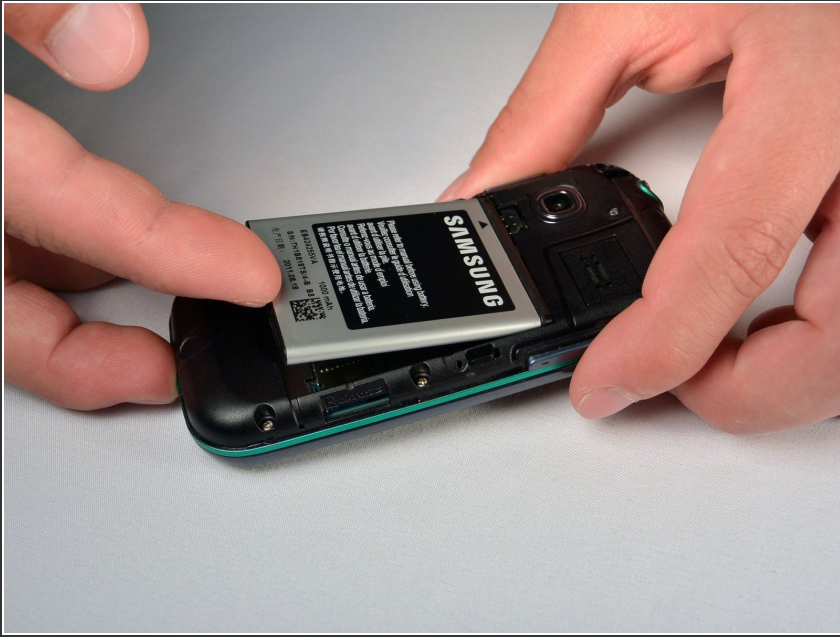
- Pry the back cover off with a plastic opening tool, or your fingernail, in the indentation on the bottom of the device.

Step 2



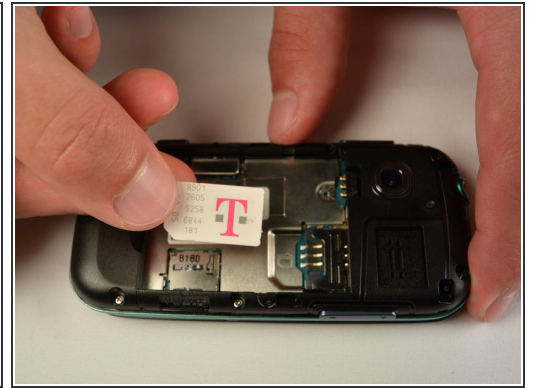
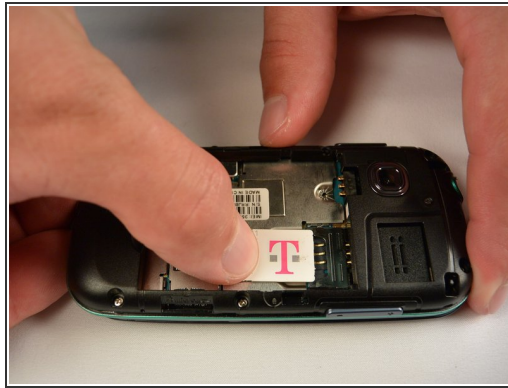
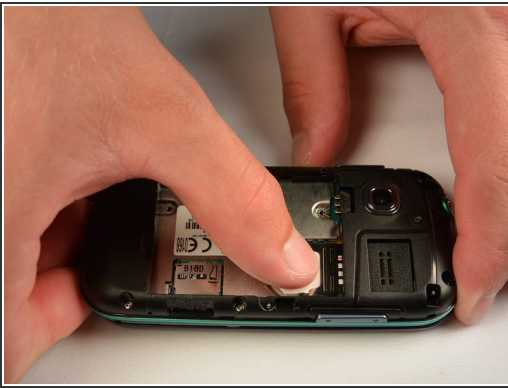
- Lift the back cover away from the main body of the phone.

Step 3



- Insert your finger in the groove below the battery.
 - Press the battery toward the audio jack while lifting upward and away from the phone.
- ★ Remember to place the battery back with the copper contacts on the battery lined up with those on the phone.

Step 4 — SIM Card



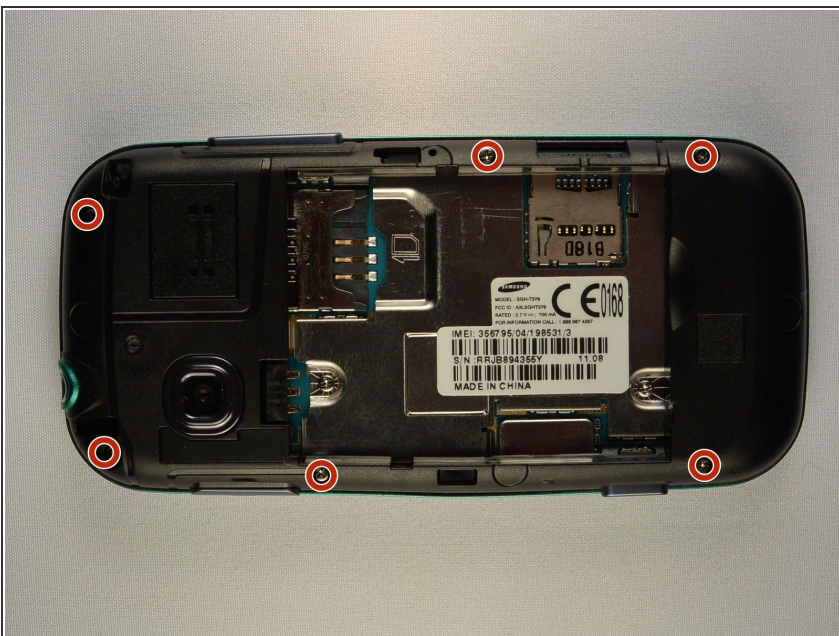
- Using your finger, push the SIM Card down and slide out of the slot.
 - ❗ Slide the SIM card out enough to grab it firmly.
 - Remove the SIM card away from the phone.
- ★ Follow the visual on the bottom of the SIM card slot to put the SIM card back in the correct orientation.
- ❗ When sliding the SIM Card back in the slot, make sure the card goes all the way in the slot until it hits the stopper.

Step 5 — microSD Card



- Using your fingernail, push the microSD card slightly deeper into the slot, until you hear a click.
- ❗ The removal of the battery is not required for this operation; therefore, step 3 can be skipped if just replacing the microSD card.
- After the click, release the microSD card to allow it to pop out.
- Remove the microSD card from its slot
- ☑ When placing the microSD card back in the phone, make sure the card clicks in place.

Step 6 — Plastic Back Frame



- Remove the six 3 mm #00 Phillips screws in the plastic back frame.

Step 7



- Slide the keyboard out.
- Use a Jimmy to separate a small segment of the plastic back frame from rest of the phone.
 - ⓘ Starting at the bottom of the keyboard is recommended.
- Slide an opening pick around the rest of the seam, starting at the gap just created with the Jimmy.
 - ⓘ You will have to slide the keyboard back in to separate the back frame from the top half of the keyboard slider.
- Lift the plastic back frame away.

To reassemble your device, follow these instructions in reverse order.