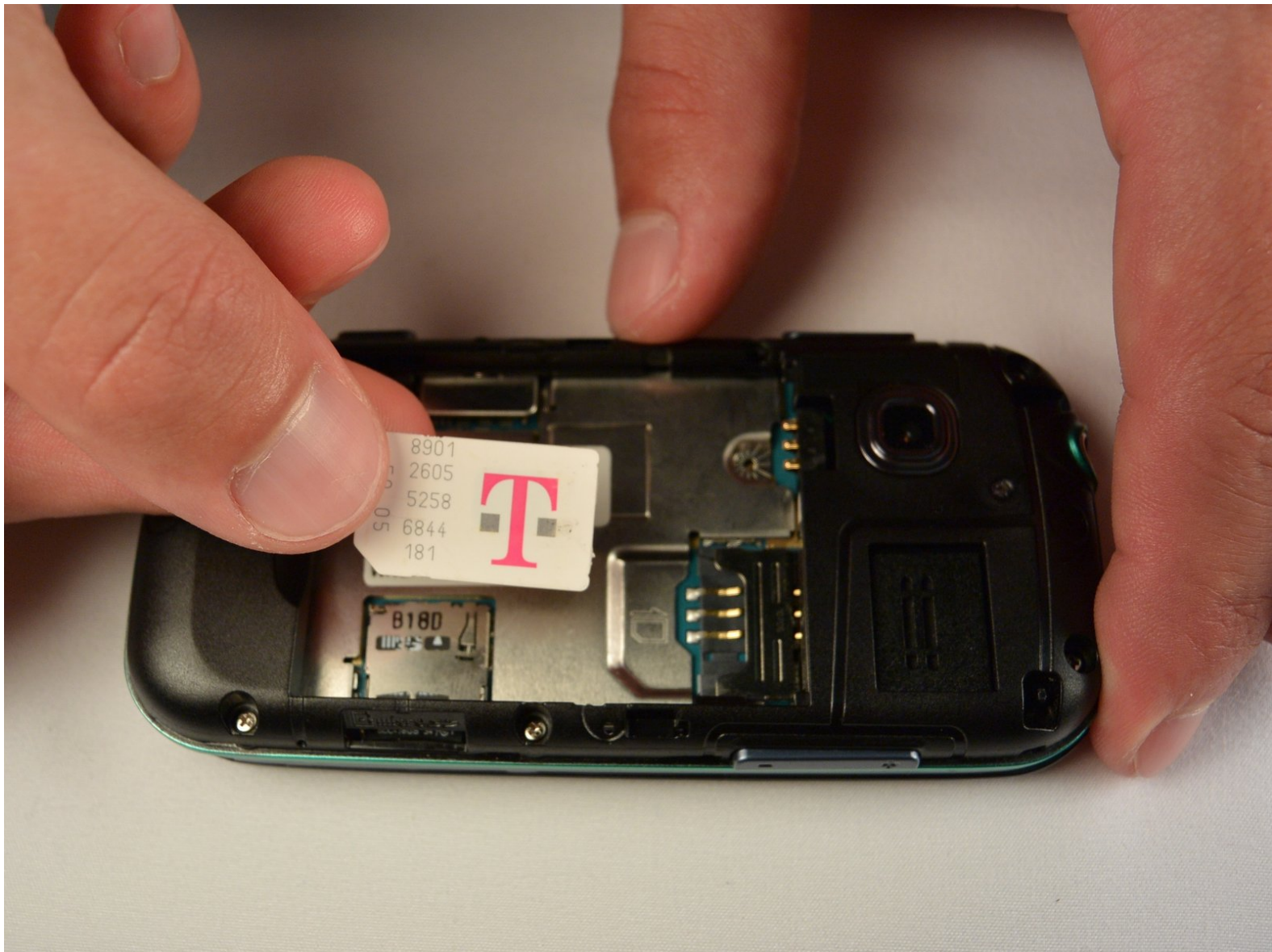




# Samsung Gravity TXT SIM Card Replacement

This guide shows how to replace the SIM card.

Written By: Mounir Karmada

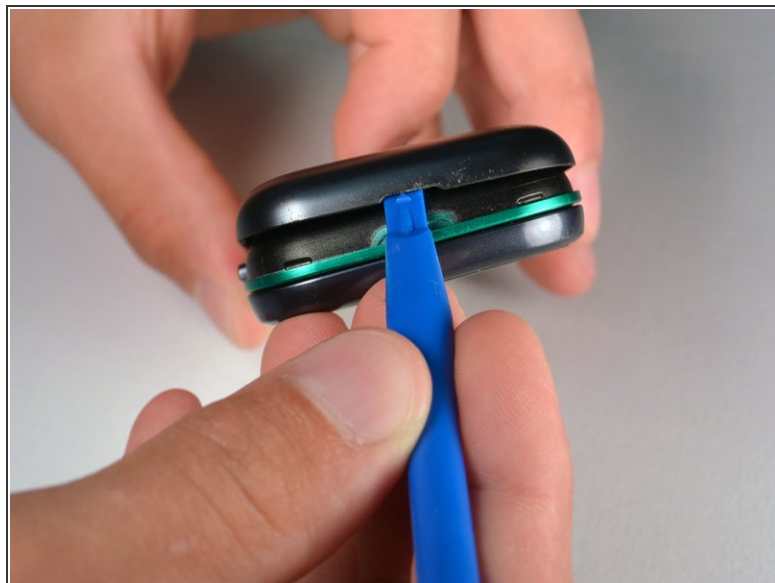




## TOOLS:

- [iFixit Opening Tools](#) (1)
-

## Step 1 — Battery



- Pry the back cover off with a plastic opening tool, or your fingernail, in the indentation on the bottom of the device.

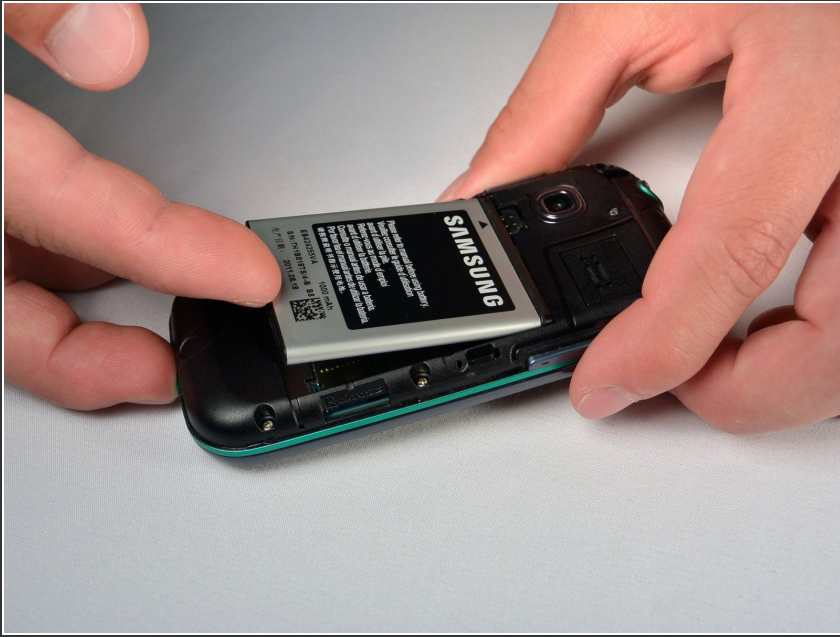
## Step 2



- Lift the back cover away from the main body of the phone.

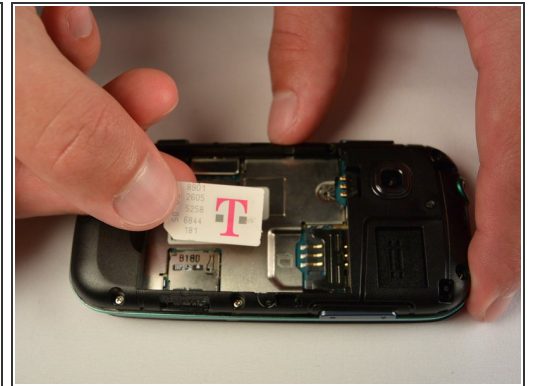
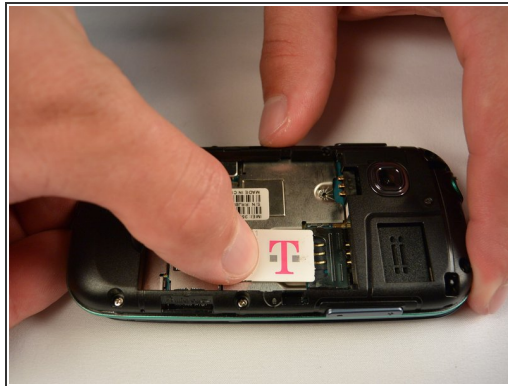


### Step 3



- Insert your finger in the groove below the battery.
  - Press the battery toward the audio jack while lifting upward and away from the phone.
- ★ Remember to place the battery back with the copper contacts on the battery lined up with those on the phone.

### Step 4 — SIM Card



- Using your finger, push the SIM Card down and slide out of the slot.
  - ❗ Slide the SIM card out enough to grab it firmly.
  - Remove the SIM card away from the phone.
- ★ Follow the visual on the bottom of the SIM card slot to put the SIM card back in the correct orientation.
- ❗ When sliding the SIM Card back in the slot, make sure the card goes all the way in the slot until it hits the stopper.

To reassemble your device, follow these instructions in reverse order.