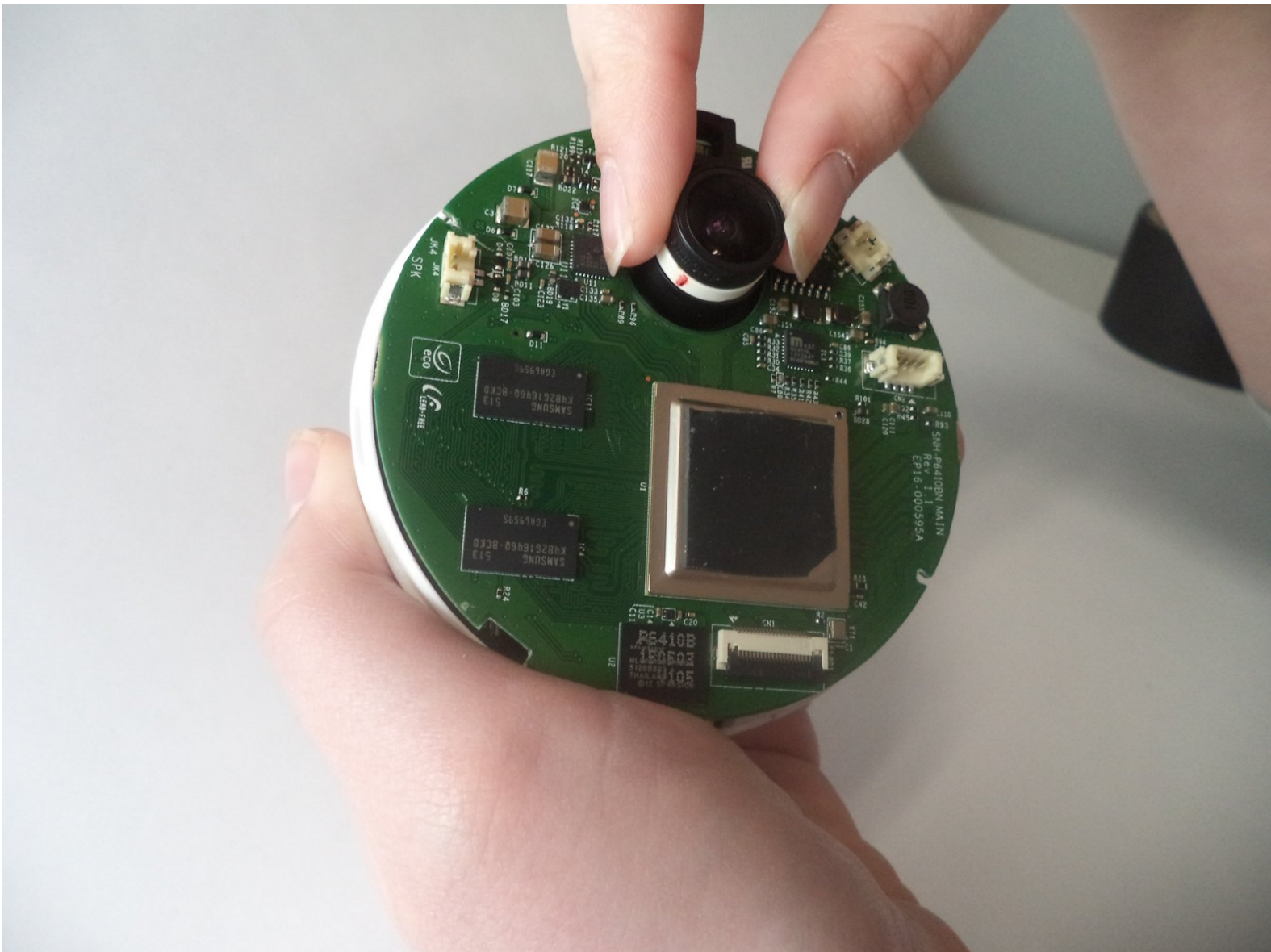




Samsung HD Pro Camera Lens Replacement

Removing and cleaning the camera lens.

Written By: Hunter Wood



INTRODUCTION

User will need to be able to open the face of the camera before beginning this guide.



TOOLS:

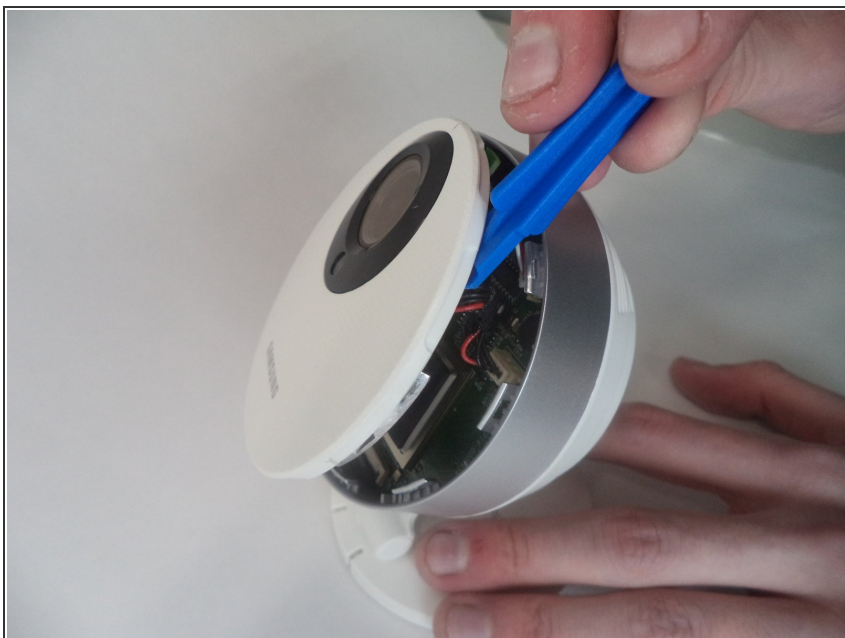
- [iFixit Opening Tools](#) (1)
-

Step 1 — Casing



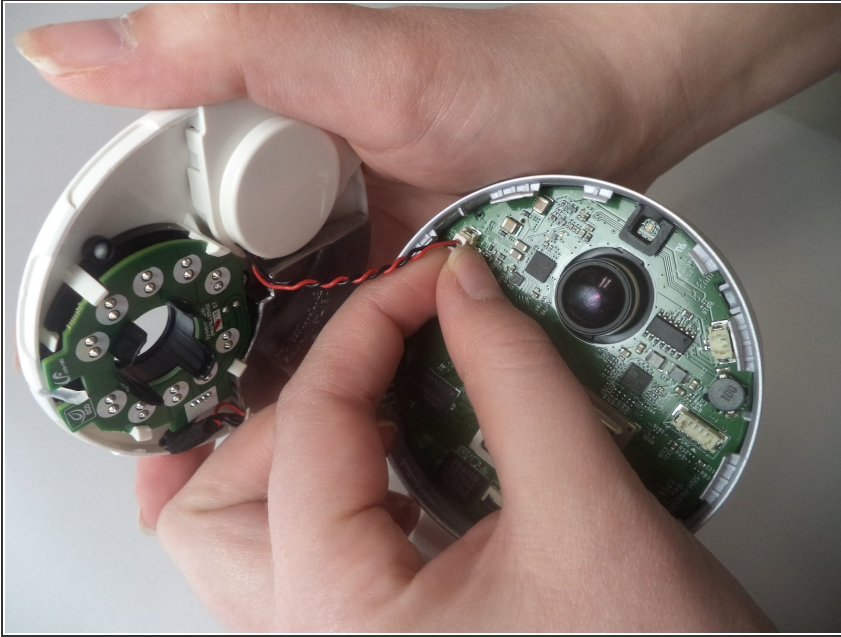
- Locate a small opening around the front panel of the camera.

Step 2



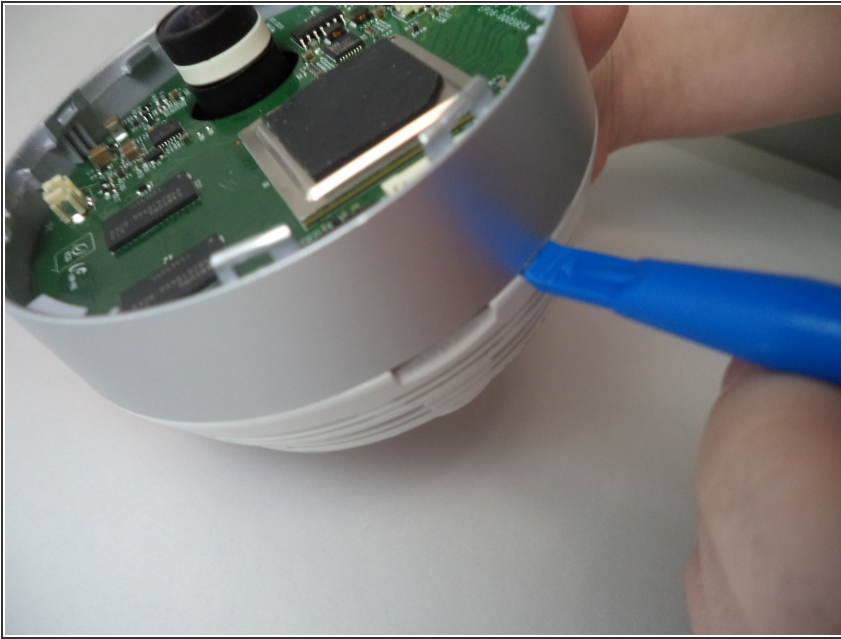
- Using a plastic opening tool, apply pressure to various points around the camera to pry open the front panel.

Step 3



- Remove both of the connecting wires from the motherboard.
- Be careful to not bend headers or damage the wires.

Step 4



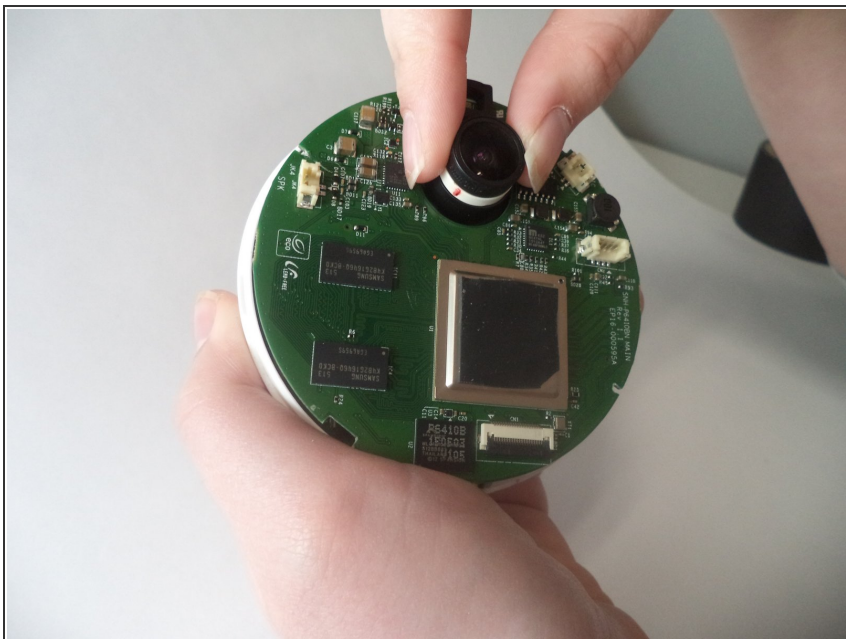
- Apply a plastic opening tool to the gray plastic band around the case of the camera. Insert the edge of the spudger between the case of the camera and the gray plastic band.

Step 5



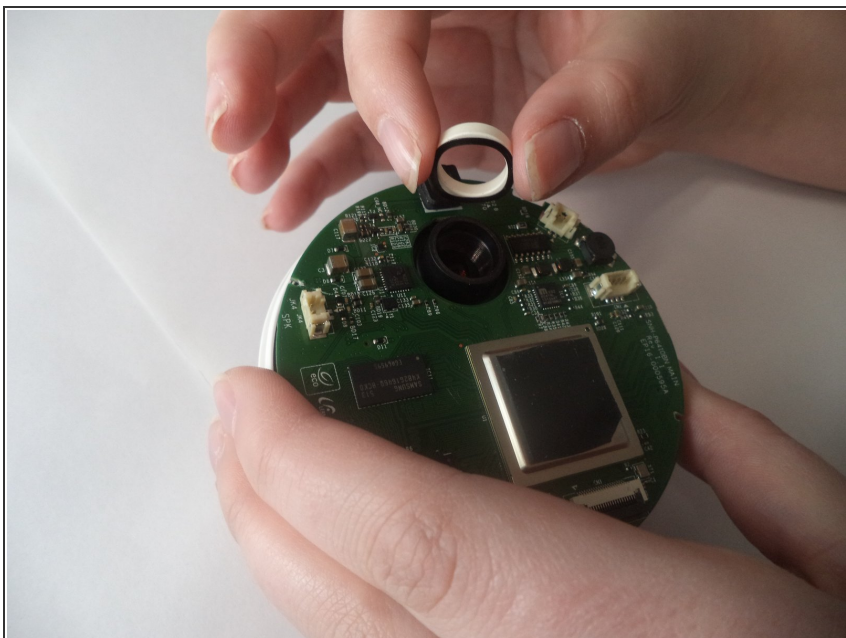
- Apply pressure with the plastic opening tool to various areas of the gray plastic band to pry it from the white plastic back of the case.

Step 6 — Camera Lens



- Locate the camera lens and unscrew it with your hands.

Step 7



- Remove the washers between the lens and motherboard.

To reassemble your device, follow these instructions in reverse order.