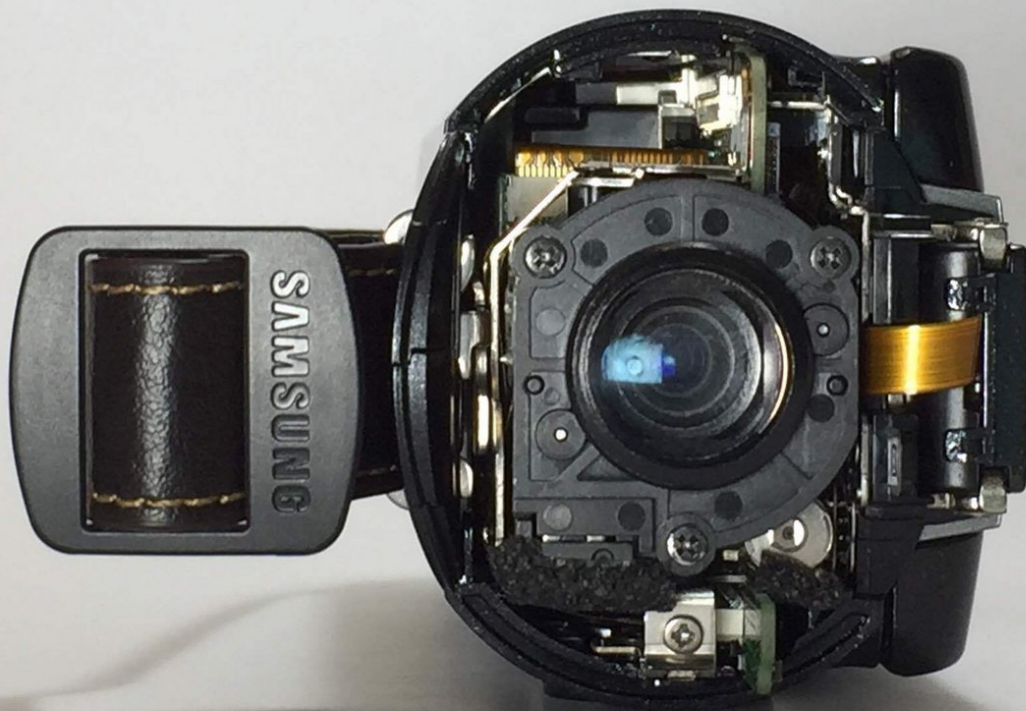




Samsung HMX-QF20 Lens Replacement

Replace a scratched lens for a crisper video quality.

Written By: Renee



INTRODUCTION

Before replacing the lens, make sure to open the lens cover (use the switch on the side of the lens) for a better look at the scratched or dirty lens. If you suspect the lens is just dusty and in need of cleaning, replacing the lens is not necessary.

TOOLS:

- [Phillips #00 Screwdriver](#) (1)
-

Step 1 — Lens



- Remove the 4 mm screw on the underside of the camcorder near the tripod mount.

Step 2



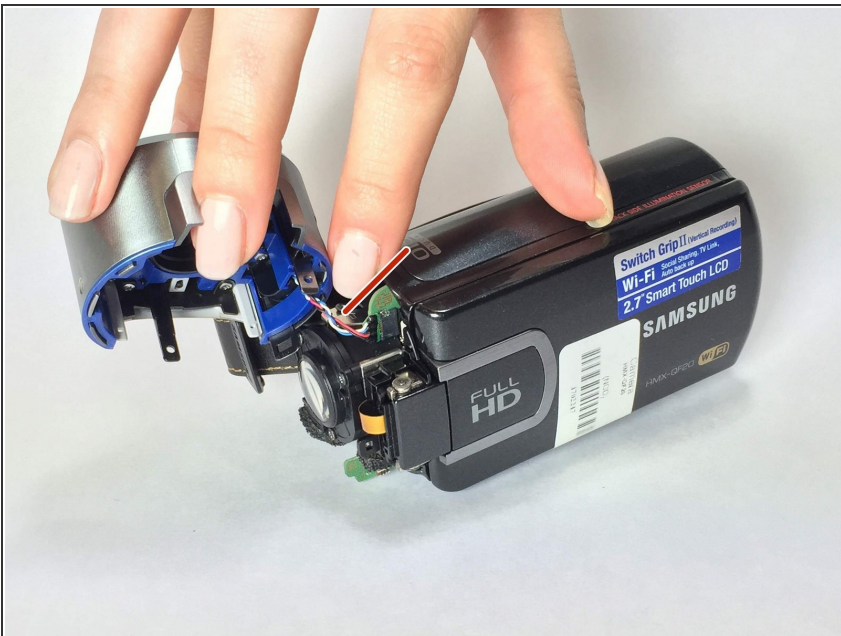
- Remove the 4 mm screw next to the buckle of the hand strap closest to the lens.

Step 3



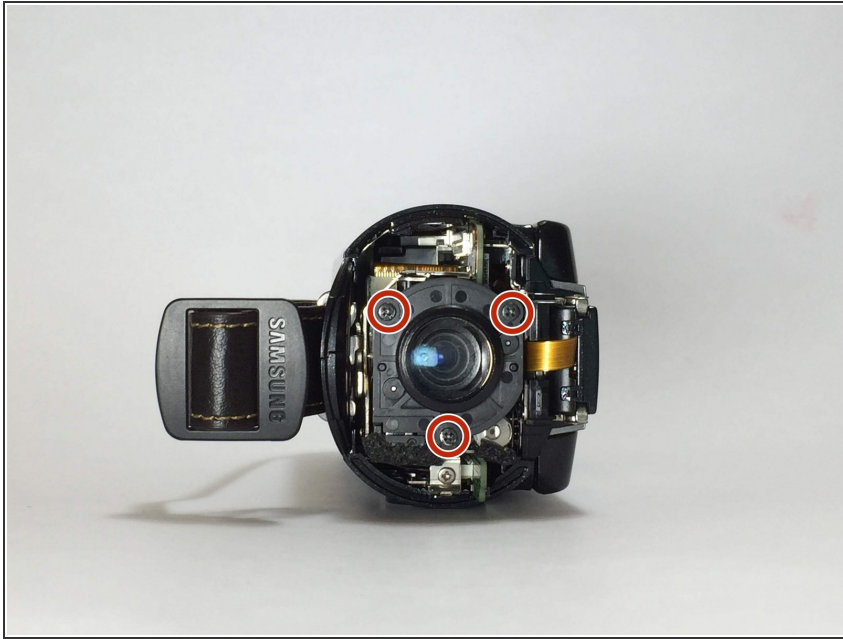
- Open the LCD screen. Remove the 4 mm screw on the inside panel, located at top left corner.

Step 4



- Firmly grip and pull the front casing on the lens to remove it.
- ⚠ Be sure to remove the front casing at gently as possible to prevent damaging the attached ribbon cable. If not careful, the ribbon cables could be torn.

Step 5



- Remove the three 5 mm screws surrounding the lens.

To reassemble your device, follow these instructions in reverse order.