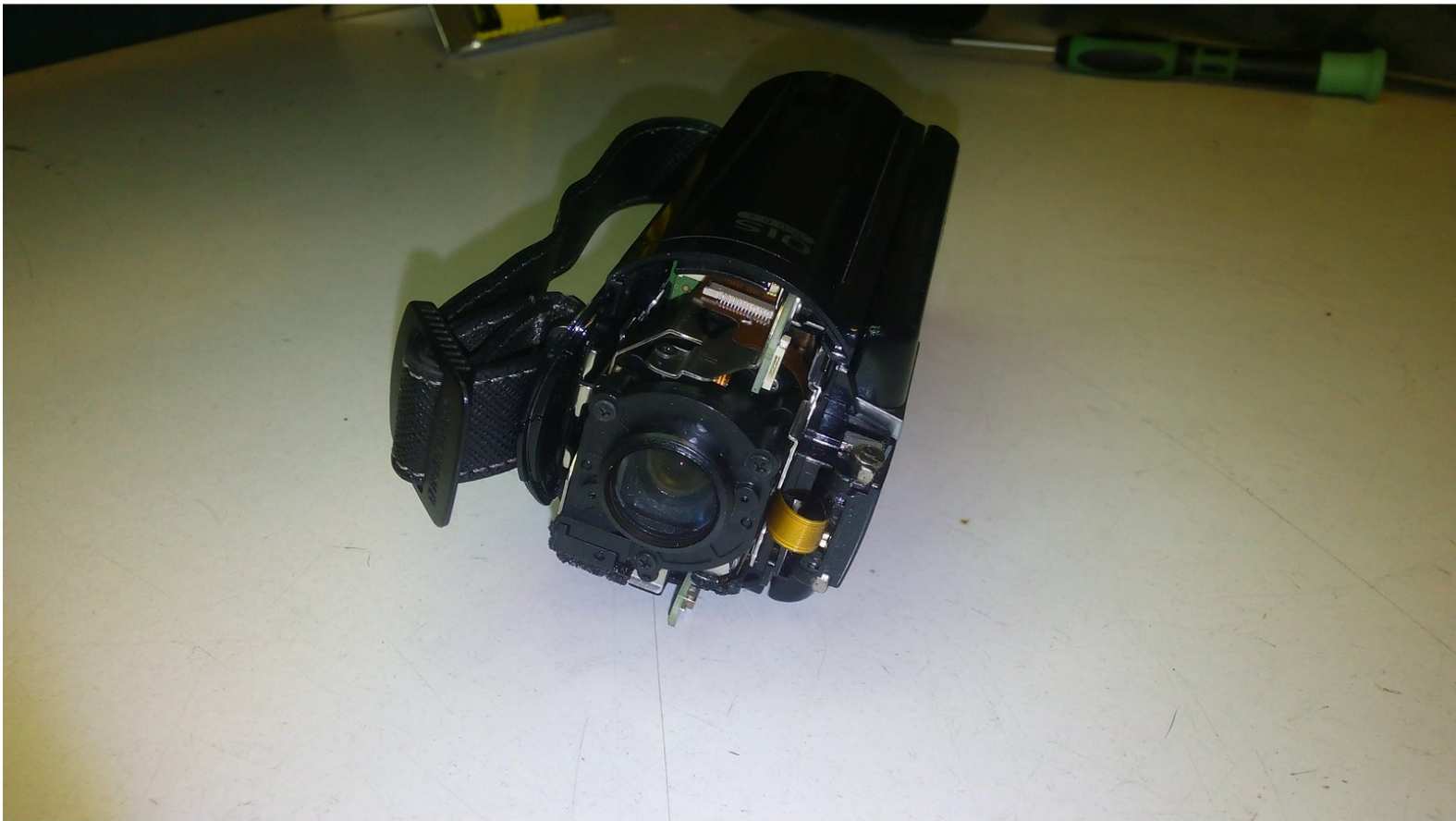




# Samsung HMX-QF20 usb connector Replacement

connector is broken and replace

Written By: juan arce



## Step 1 — open cam



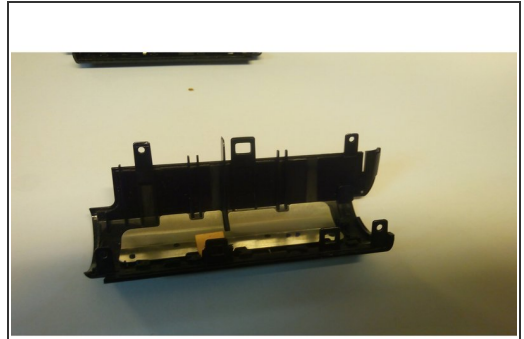
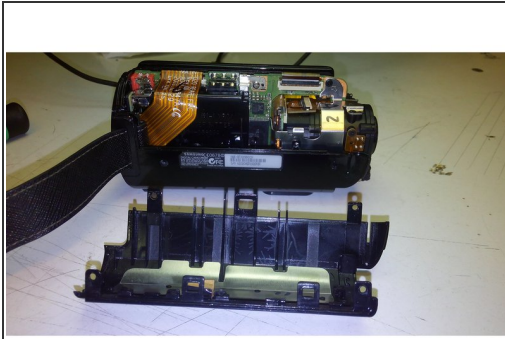
- Insert wisdom here.

## Step 2 — open cont



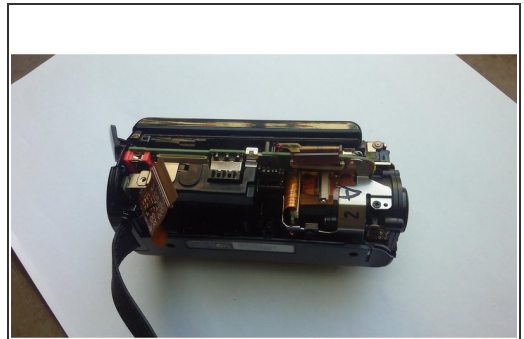
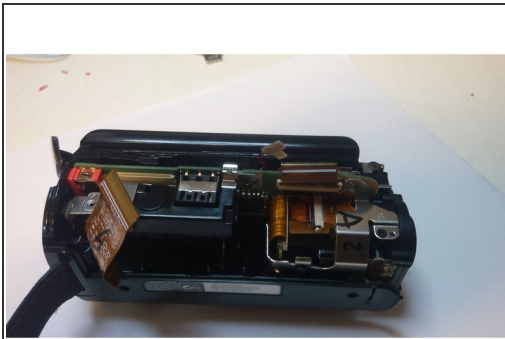
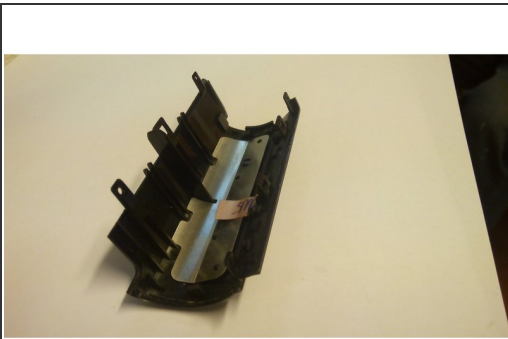
- Insert wisdom here.

### Step 3 — open cont2



- Insert wisdom here.

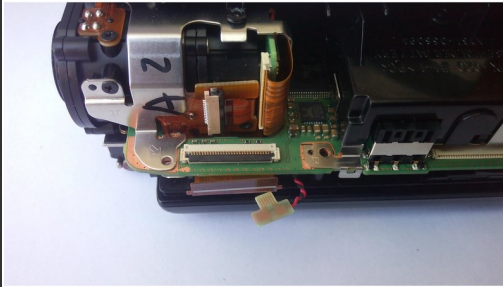
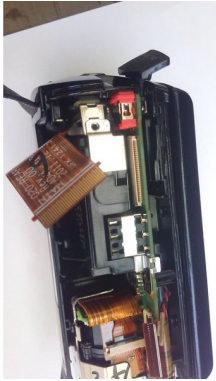
### Step 4 — open cont3



- Insert wisdom here.

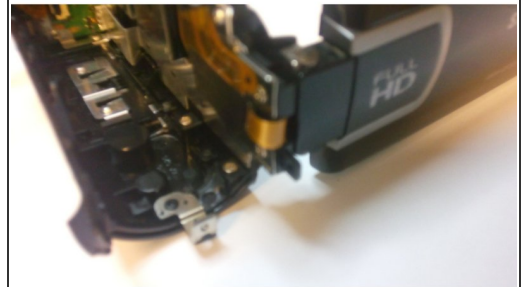
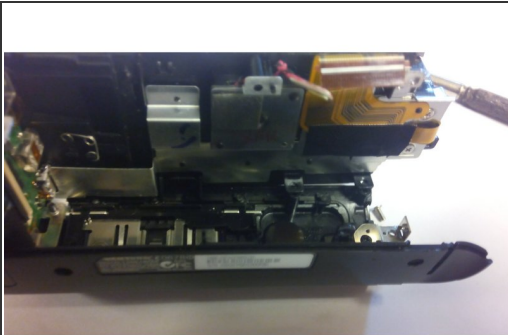


## Step 5 — open cont4



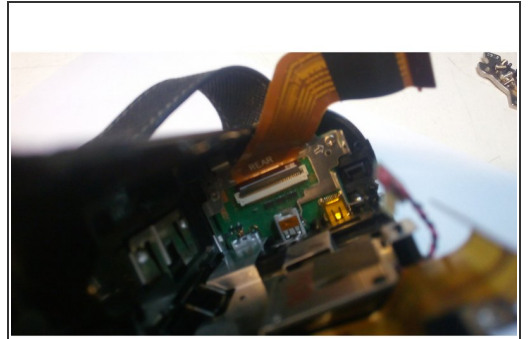
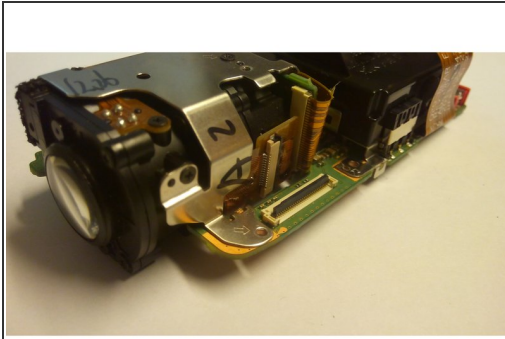
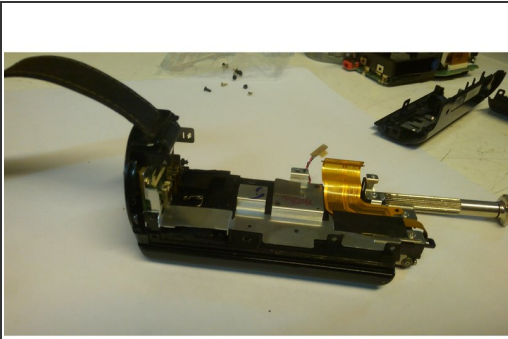
- Insert wisdom here.

## Step 6 — open cont5



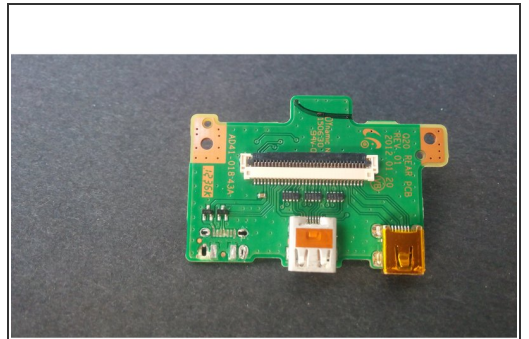
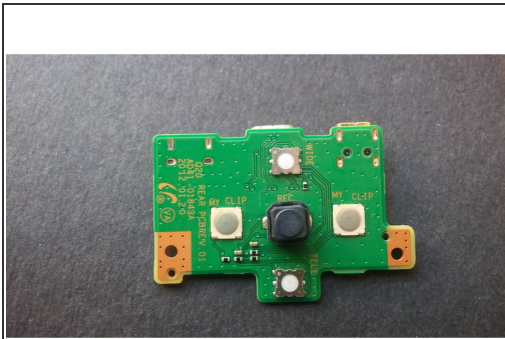
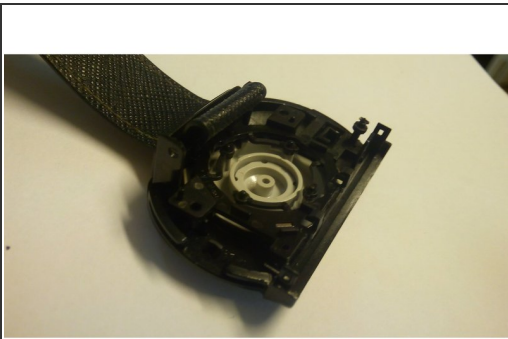
- Insert wisdom here.

## Step 7 — open cont6



- Insert wisdom here.

## Step 8 — problem



- Insert wisdom here.

## Step 9 — solution



- Insert wisdom here.

## Step 10 — solution cont



- Insert wisdom here.

To reassemble your device, follow these instructions in reverse order.