



Samsung HMX-W200 Battery Replacement

This guide will teach the user how to replace the battery in the Samsung HMX-W200.

Written By: Ashton Esparza



INTRODUCTION

The battery is located inside the camera. It will require uninstalling the battery housing, illustrated in the guide below.



TOOLS:

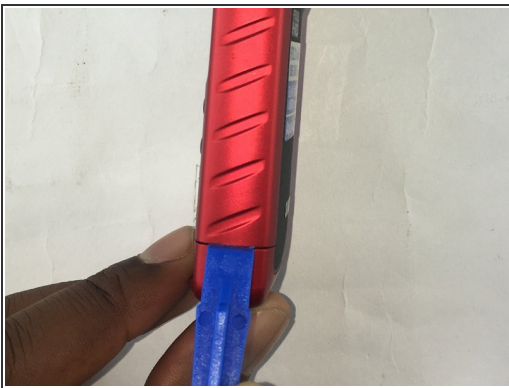
- [Phillips #00 Screwdriver](#) (1)
 - [iFixit Opening Tools](#) (1)
-

Step 1 — Outer Case



- Remove the 5.00mm screw on the right of the LCD display towards the bottom of the device by using a Phillips #00 screwdriver.

Step 2



- Use the plastic opening tool to separate and remove the bottom red casing. Do this by, pushing the tool into the seam and prying up the red casing as you move along the edges.
- ⓘ Make sure to separate all the corners before removing the red casing.

Step 3



- Using the plastic opening tool, separate and pull away the red casing on the right of the LCD screen.
- ⓘ Make sure to separate all the corners before removing the red casing.

Step 4



- To access the HDMI slot, move slider towards the bottom of the casing on the other side of the camcorder. The lid casing will lift up upon doing so.
- After accessing the HDMI slot you will find a 5.00mm screw. Using a Phillips #00 screwdriver, remove the screw.

Step 5



- Using the plastic opening tool, separate and pull away the red casing to the left of the LCD screen.
- ⓘ Make sure to separate all the corners before removing the red casing.

Step 6



- Remove the six 5.00mm screws by using a Phillips #00 screwdriver.

Step 7



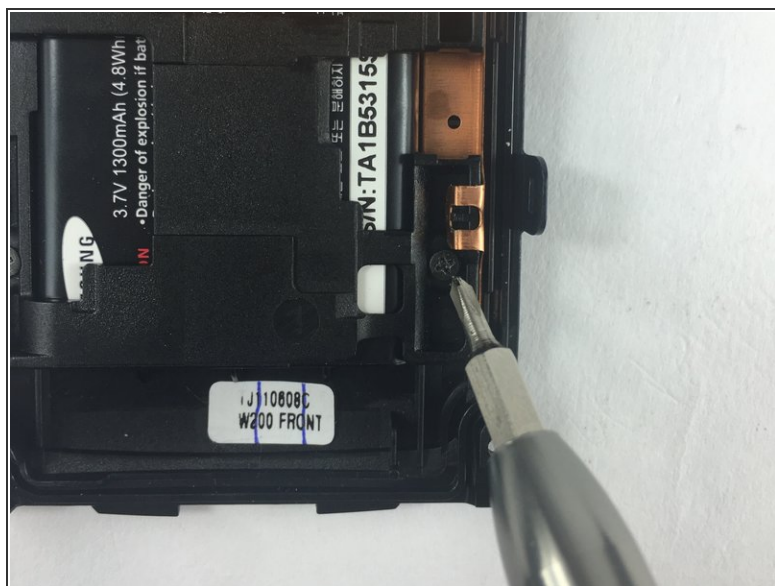
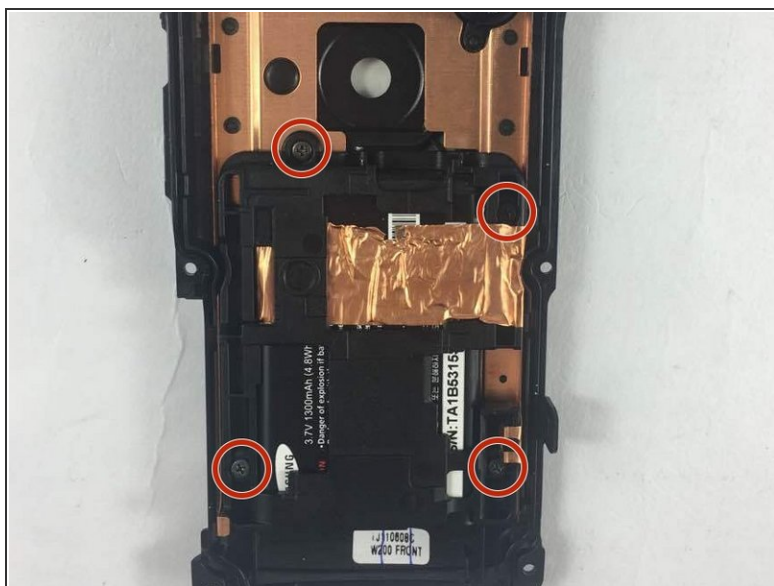
- Lift the two plastic tabs on the left side of the LCD screen and the single one on the right side on the black casing to open the device.

Step 8



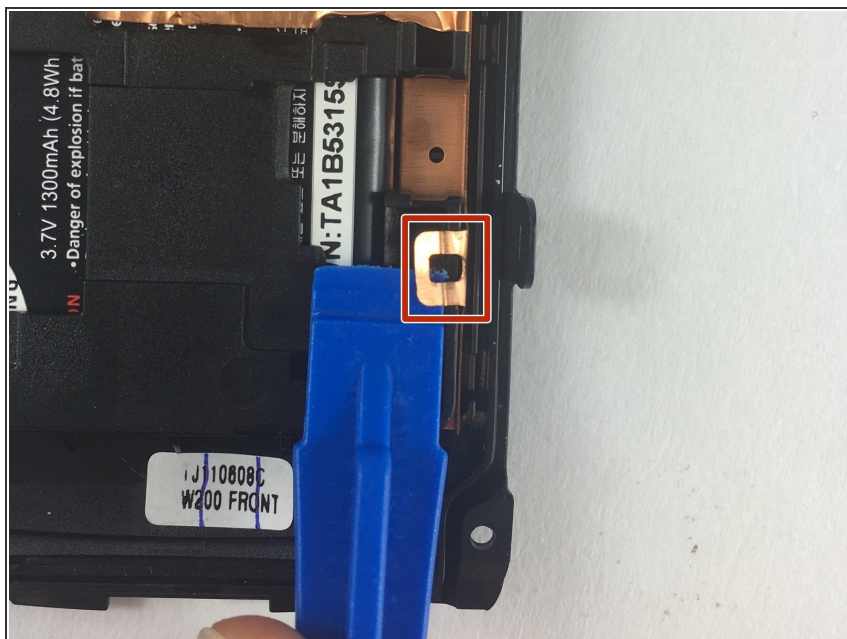
- Separate the front and back casing.

Step 9 — Battery



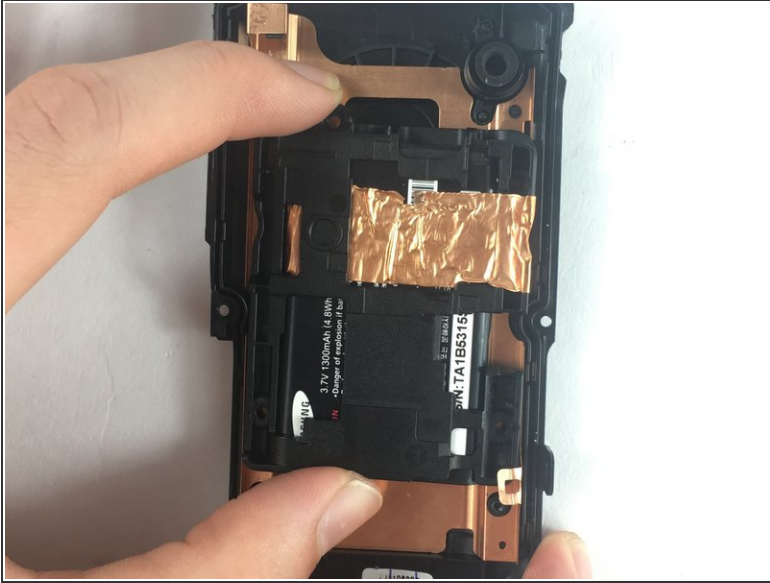
- Remove the four 4.00mm screws holding the battery brace using a Phillips #00 screwdriver.

Step 10



- Using a plastic opening tool, lift the copper tab holding the battery brace in place.

Step 11



- Remove the battery brace and battery from the camera casing.
- Remove the old battery from the brace and place the new one.
- ⓘ Your battery might be held to the brace by a copper tape. If so, you'll need to peel the tape away to remove it. This tape does not affect the battery's operation in any way, so it is safe to remove it.

To reassemble your device, follow these instructions in reverse order.