



Samsung HMX-W200 Motherboard Replacement

This guide will show users how to replace motherboard.

Written By: Haya Barakat



INTRODUCTION

To replace the motherboard, the user will need to remove the outer casing. This is done by removing removing screws fastening it in, then peeling a away the casing.

TOOLS:

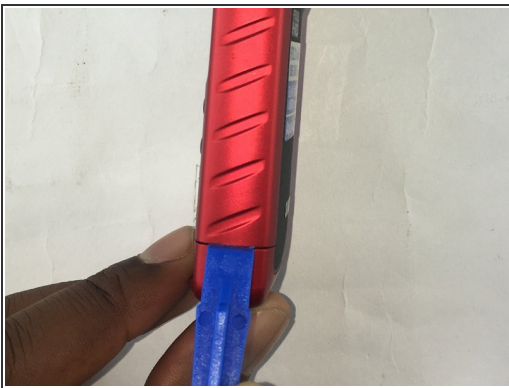
- [Phillips #00 Screwdriver](#) (1)
 - [iFixit Opening Tools](#) (1)
 - [Tweezers](#) (1)
-

Step 1 — Outer Case



- Remove the 5.00mm screw on the right of the LCD display towards the bottom of the device by using a Phillips #00 screwdriver.

Step 2



- Use the plastic opening tool to separate and remove the bottom red casing. Do this by, pushing the tool into the seam and prying up the red casing as you move along the edges.
- ⓘ Make sure to separate all the corners before removing the red casing.

Step 3



- Using the plastic opening tool, separate and pull away the red casing on the right of the LCD screen.
- ⓘ Make sure to separate all the corners before removing the red casing.

Step 4



- To access the HDMI slot, move slider towards the bottom of the casing on the other side of the camcorder. The lid casing will lift up upon doing so.
- After accessing the HDMI slot you will find a 5.00mm screw. Using a Phillips #00 screwdriver, remove the screw.

Step 5



- Using the plastic opening tool, separate and pull away the red casing to the left of the LCD screen.
- ⓘ Make sure to separate all the corners before removing the red casing.

Step 6



- Remove the six 5.00mm screws by using a Phillips #00 screwdriver.

Step 7



- Lift the two plastic tabs on the left side of the LCD screen and the single one on the right side on the black casing to open the device.

Step 8



- Separate the front and back casing.

Step 9 — Motherboard



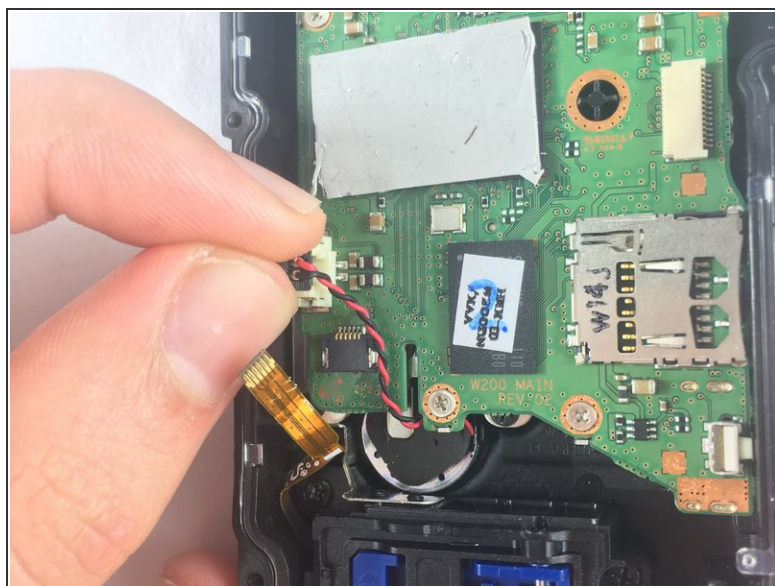
- Once inside the device, find the half that contains the motherboard of the device.

Step 10



- Use precision tweezers to gently pull out the USB connection from the motherboard.

Step 11



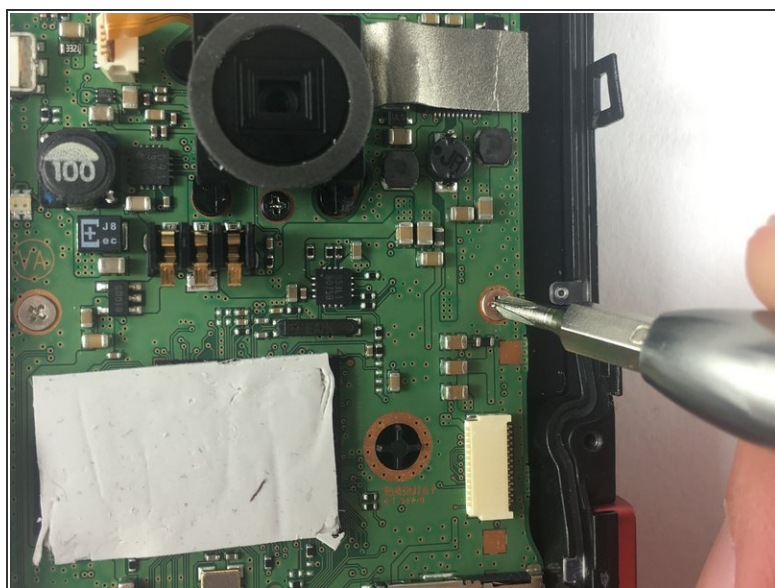
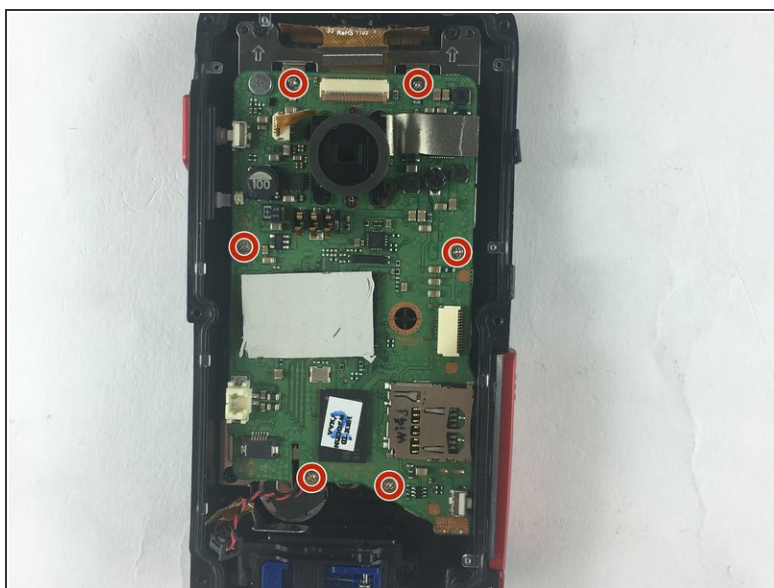
- Remove the audio connector from the motherboard (red and black cables).
 - Using the plastic opening tool, lift the connectors from all sides before pulling it with your fingers.
- ⚠ Do not pull off the connectors by the cables. This could damage the connection from the speaker to the motherboard.

Step 12



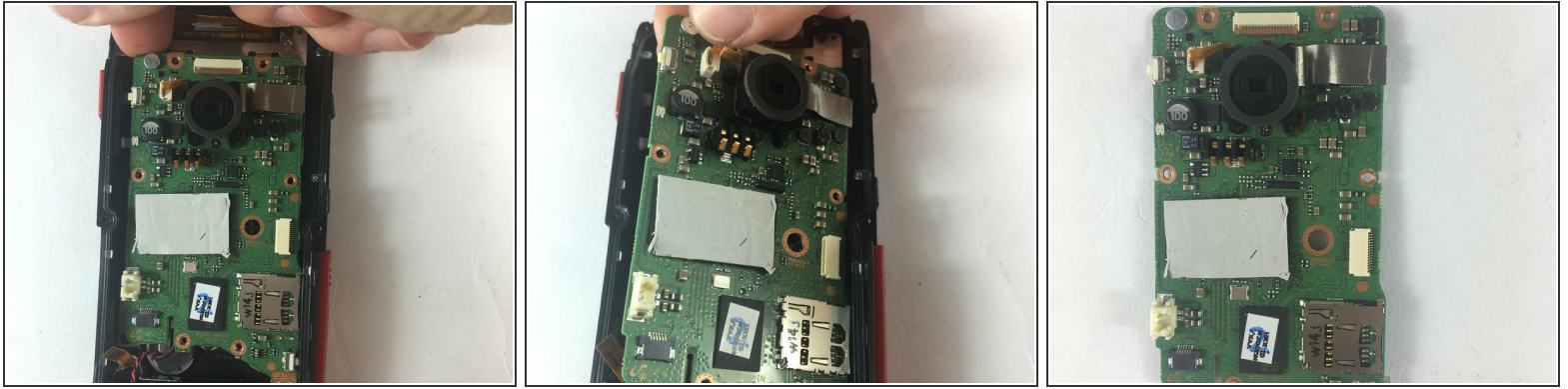
- Use precision tweezers to remove the connector joining the LCD and the motherboard.

Step 13



- Remove the six 2.00mm screws with Phillips #00 screwdriver.

Step 14



- Lift motherboard from top left side and pull away gently.

To reassemble your device, follow these instructions in reverse order.