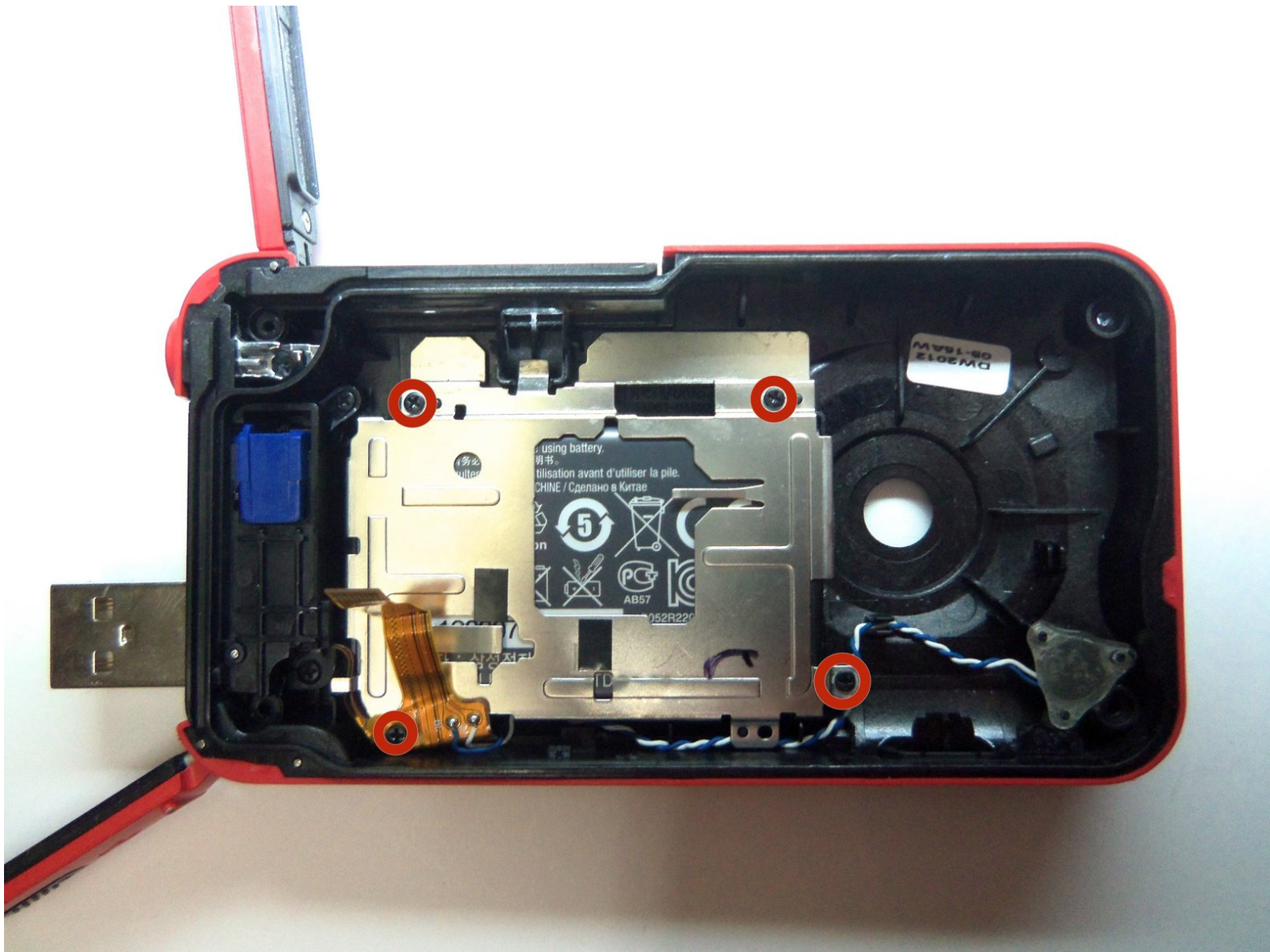




Samsung HMX-W300 Battery Replacement

How to replace the battery.

Written By: Robert



INTRODUCTION

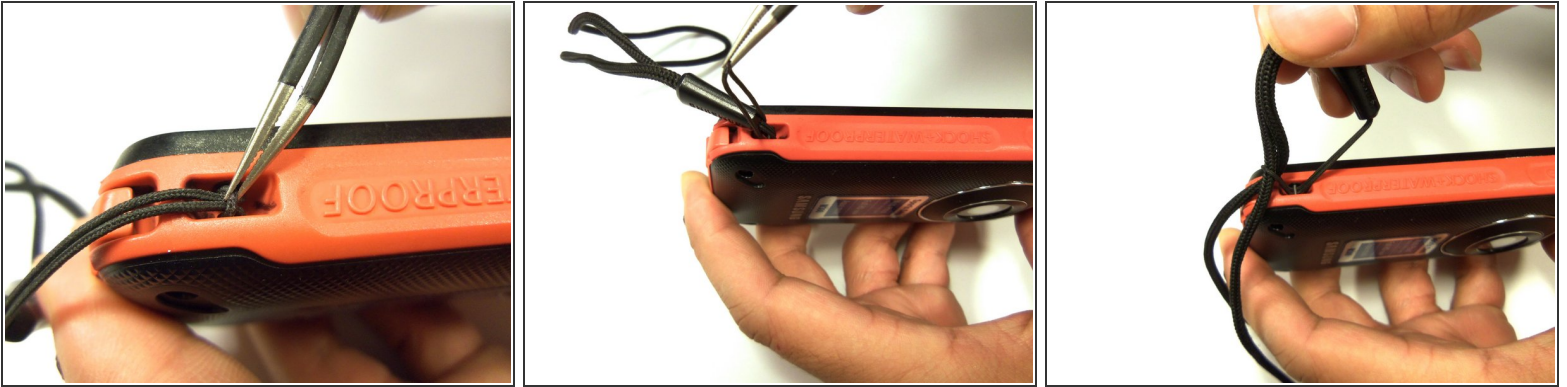
The battery is located inside the camera. To remove the battery, it will require uninstalling the battery housing. This can be done in a few steps found below.



TOOLS:

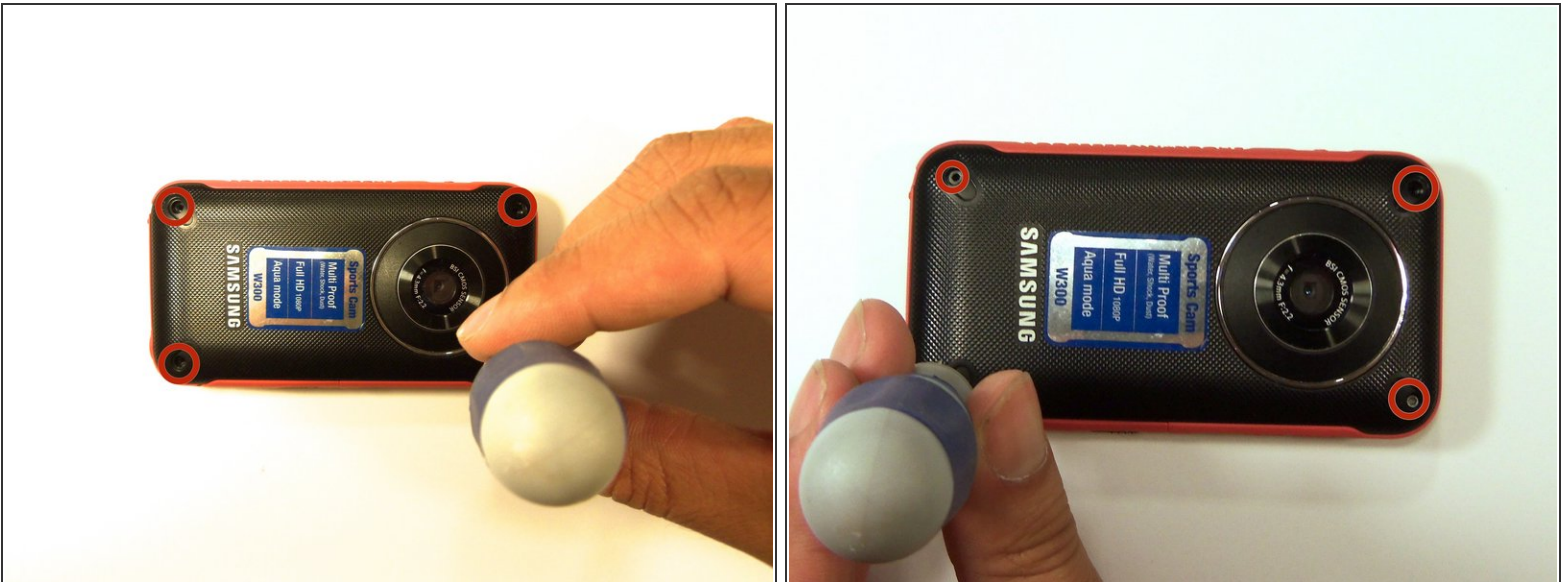
- [1.5mm Hex Screwdriver](#) (1)
 - [Phillips #00 Screwdriver](#) (1)
 - [iFixit Opening Tools](#) (1)
-

Step 1 — Remove wristband



- To remove the wristband of the device, grab the middle loop and pull. Pull the band through as shown in the picture.

Step 2 — Front case screw removal



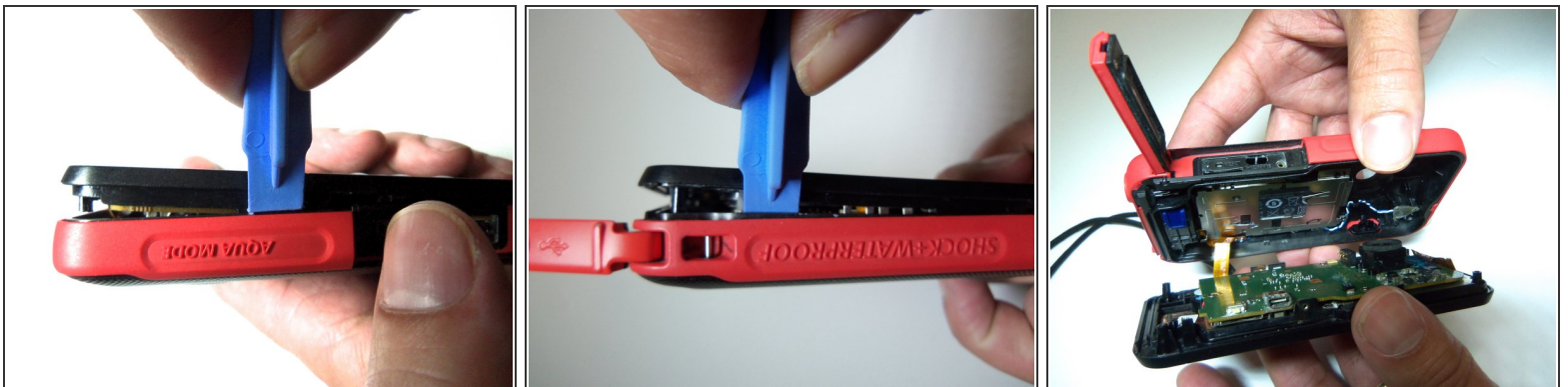
- Remove all four Hex screws with a Hex 1.5 mm screwdriver.

Step 3 — Remove HDMI screw



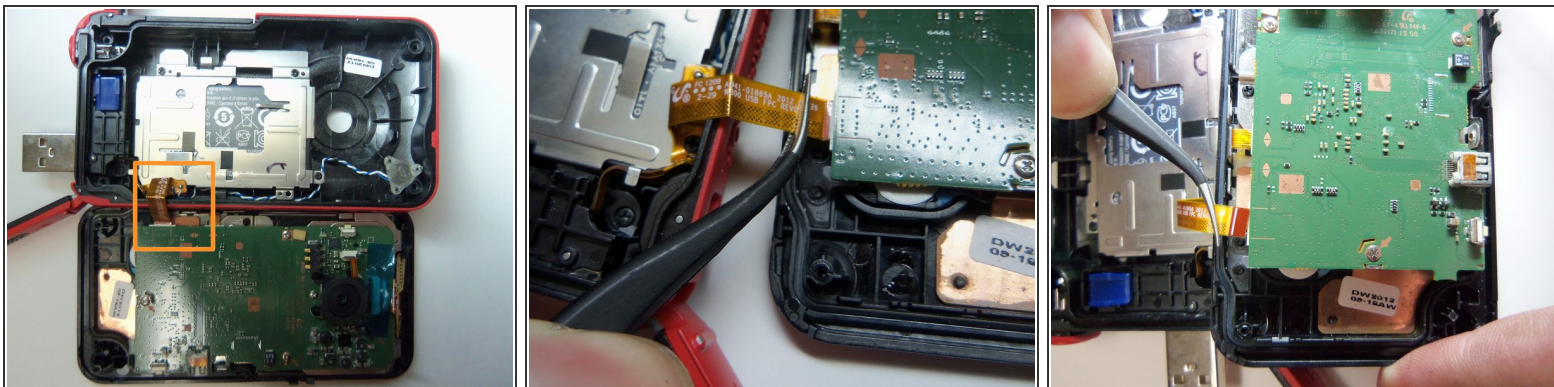
- To remove the HDMI screw, open the HDMI door on the side. Remove the screw using a Phillip size 00.

Step 4 — Open front case.



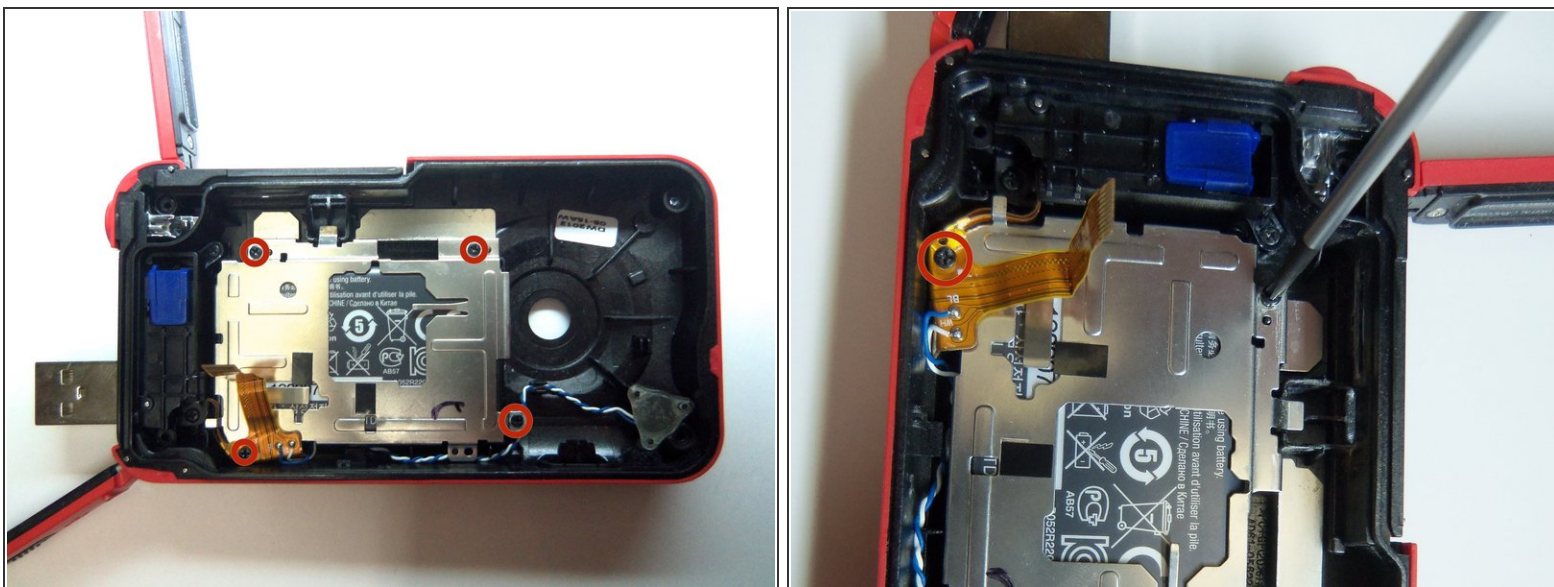
- As shown in the picture, use the plastic opening tool on both sides on the device. Pry apart both parts.
- ⚠ Do not pry apart the device too hard. There is a wire that attaches the front case with the rear case.

Step 5 — Unplug wire.



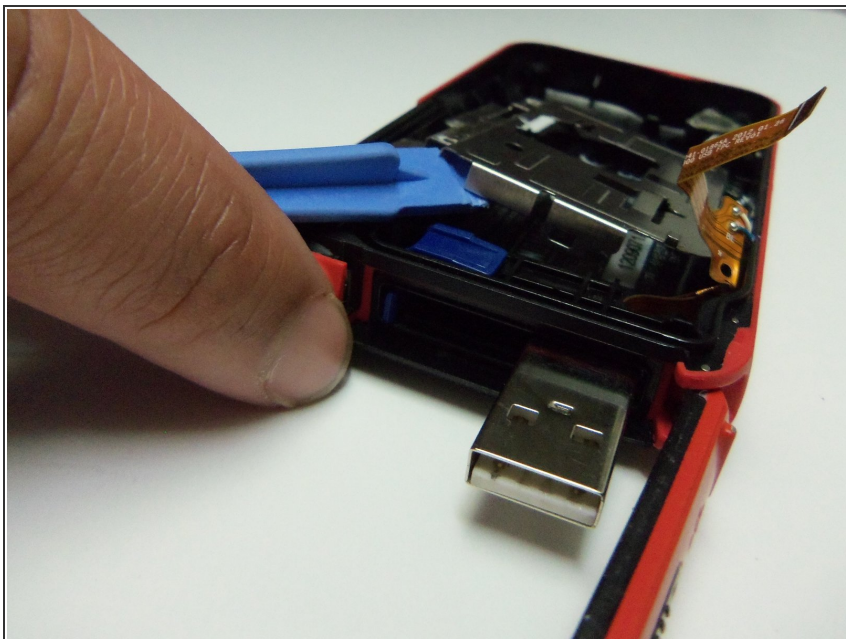
- Pull the wire ribbon out with a pair of tweezers.

Step 6 — Battery screw removal



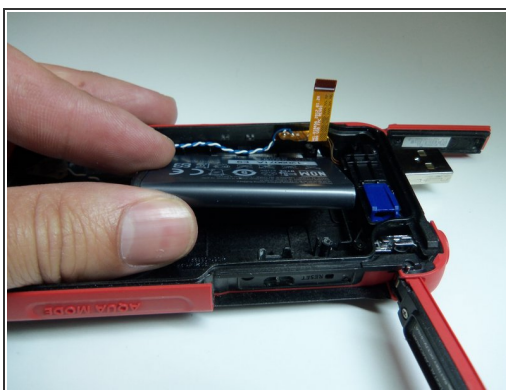
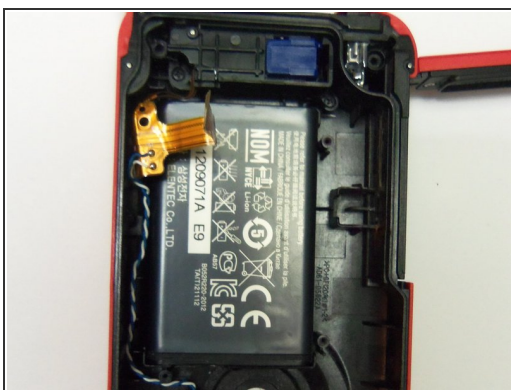
- To remove the battery housing, you must first use a Phillips size 00 to remove the 4 screws.

Step 7 — Battery housing removal



- Use the plastic opening tool to pry the battery housing open.

Step 8 — Remove battery



- After removing the battery housing, take the battery out.

To reassemble your device, follow these instructions in reverse order.