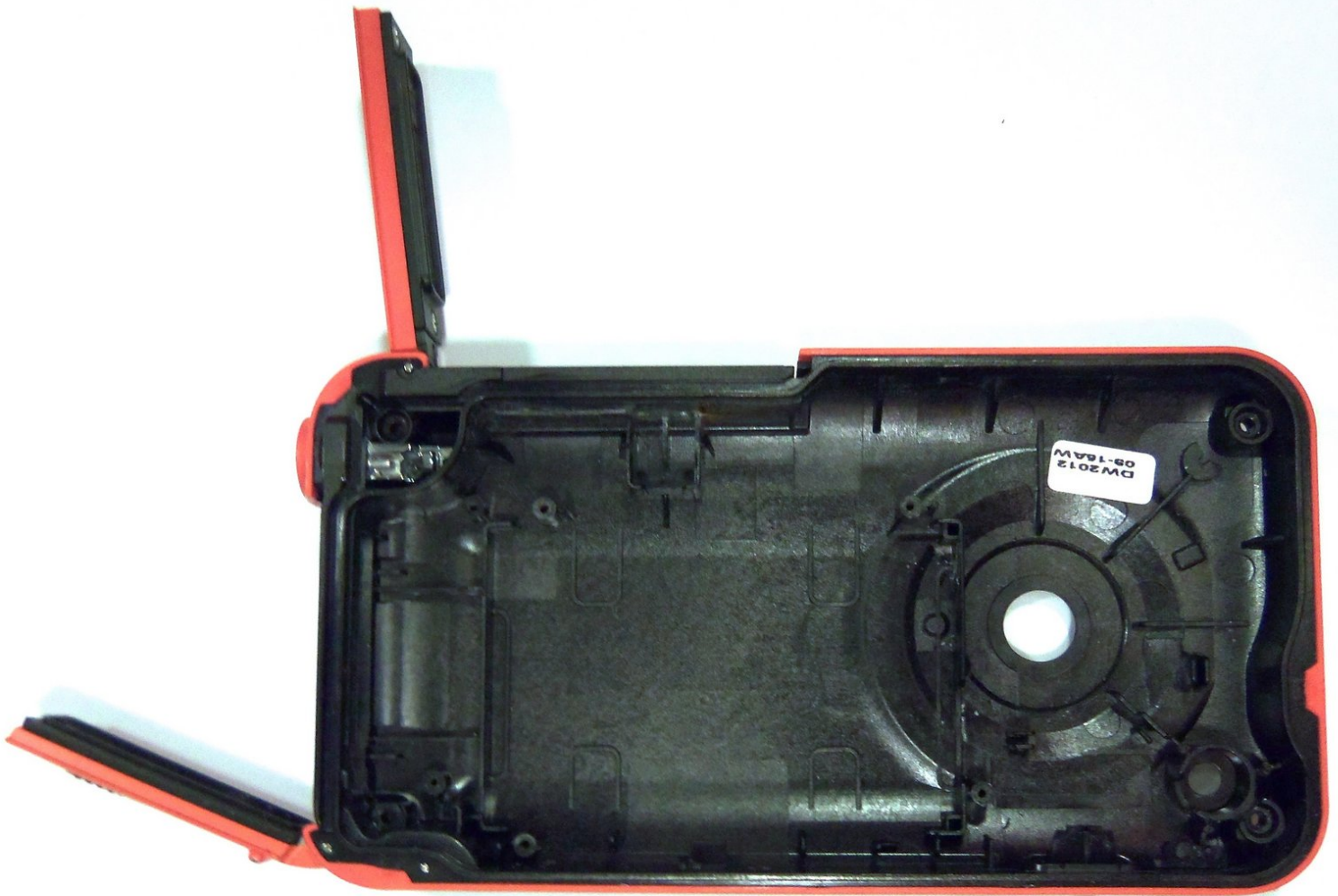




Samsung HMX-W300 Front Case Replacement

How to replace the front case.

Written By: Robert



INTRODUCTION

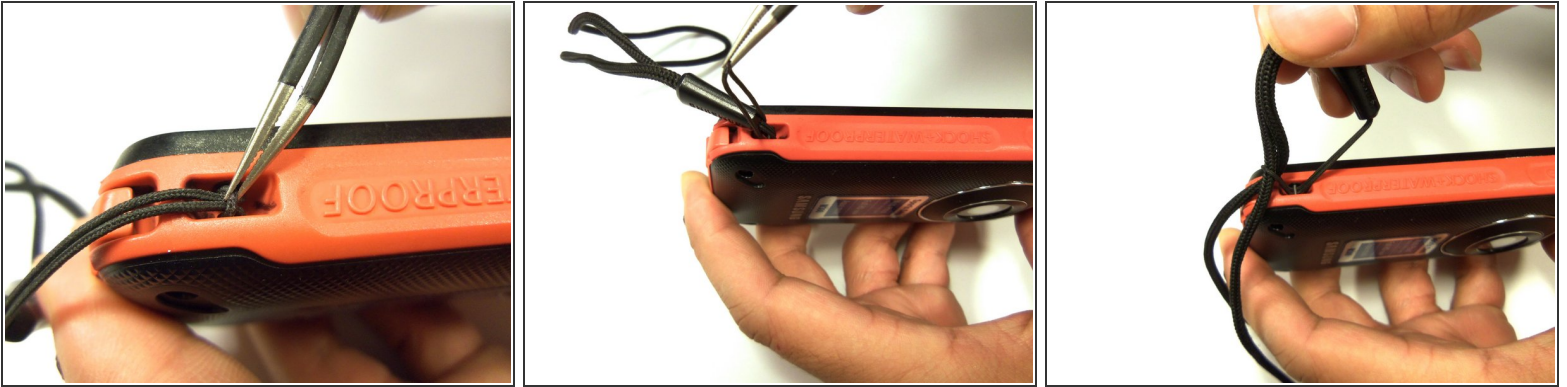
Demonstrates how to replace the front case of the camera through pictures and words. Replacement of the rear case requires disassembling battery housing and battery from front case.



TOOLS:

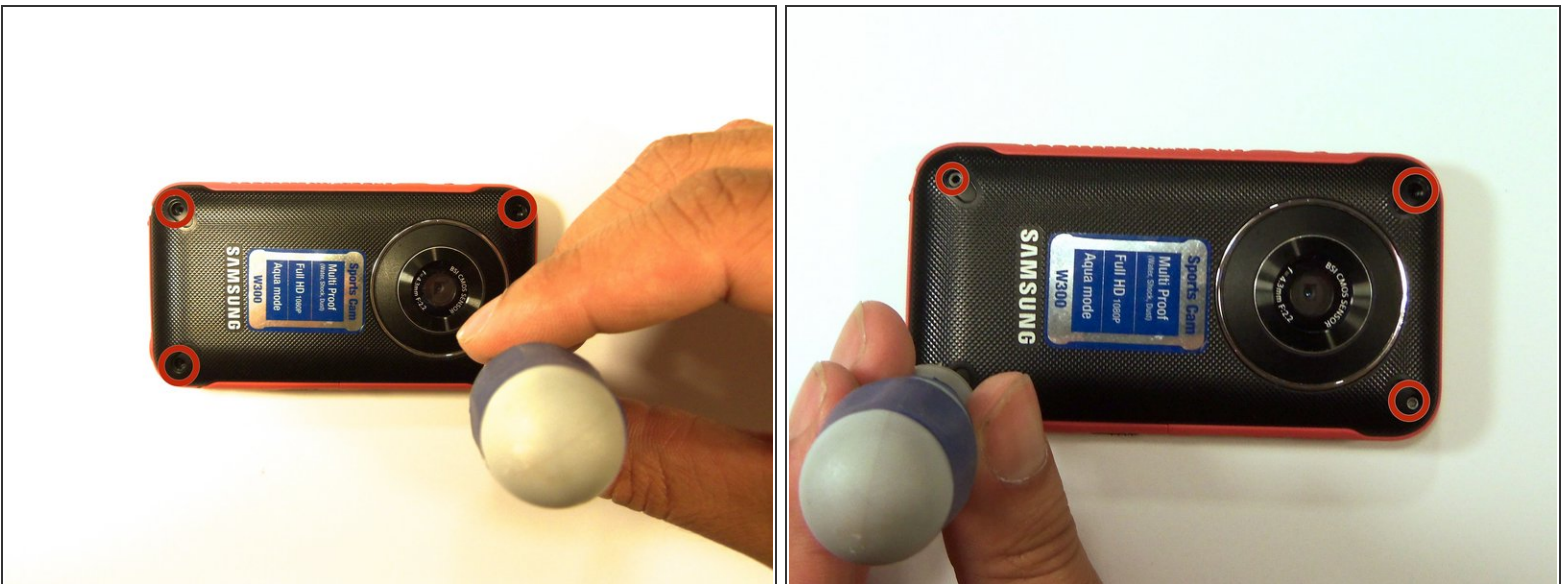
- [1.5mm Hex Screwdriver](#) (1)
 - [Phillips #00 Screwdriver](#) (1)
 - [iFixit Opening Tools](#) (1)
-

Step 1 — Remove wristband



- To remove the wristband of the device, grab the middle loop and pull. Pull the band through as shown in the picture.

Step 2 — Front case screw removal



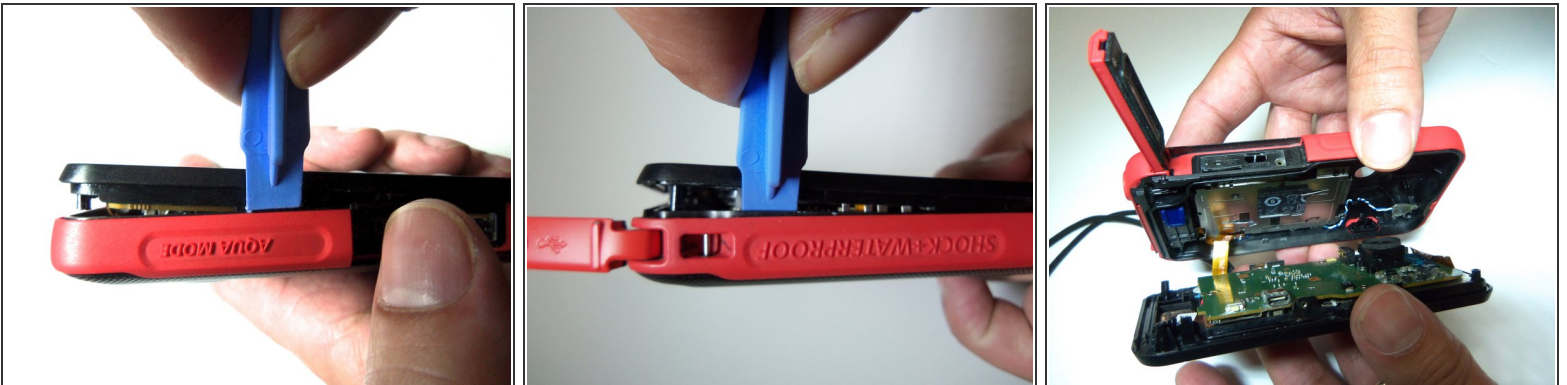
- Remove all four Hex screws with a Hex 1.5 mm screwdriver.

Step 3 — Remove HDMI screw



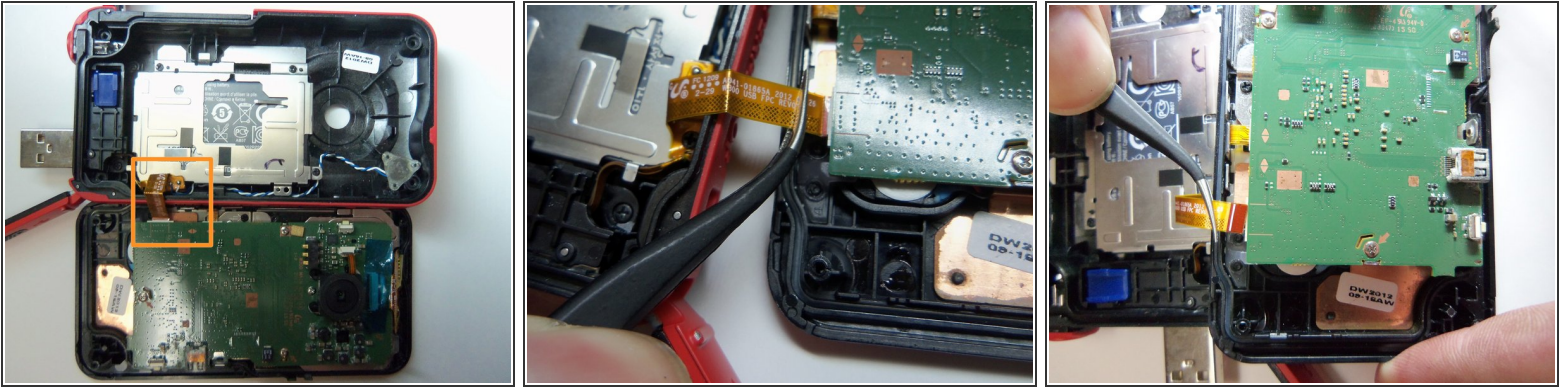
- To remove the HDMI screw, open the HDMI door on the side. Remove the screw using a Phillip size 00.

Step 4 — Open front case.



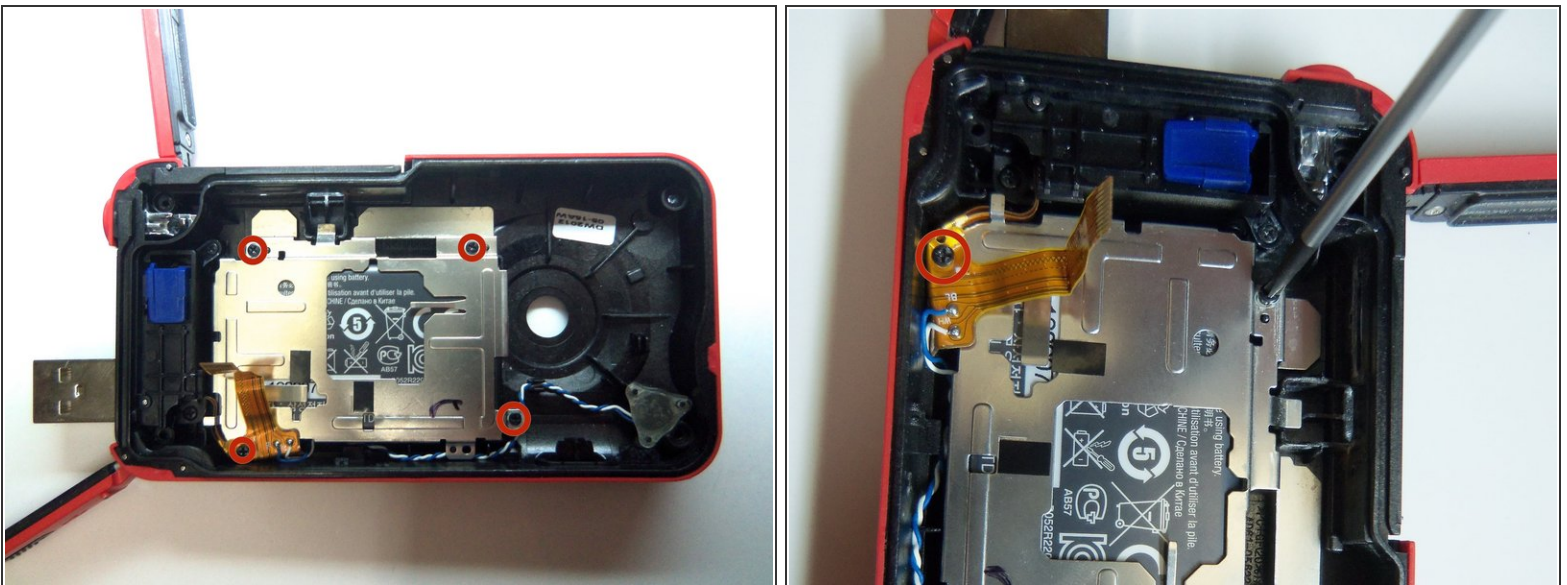
- As shown in the picture, use the plastic opening tool on both sides on the device. Pry apart both parts.
- ⚠ Do not pry apart the device too hard. There is a wire that attaches the front case with the rear case.

Step 5 — Unplug wire.



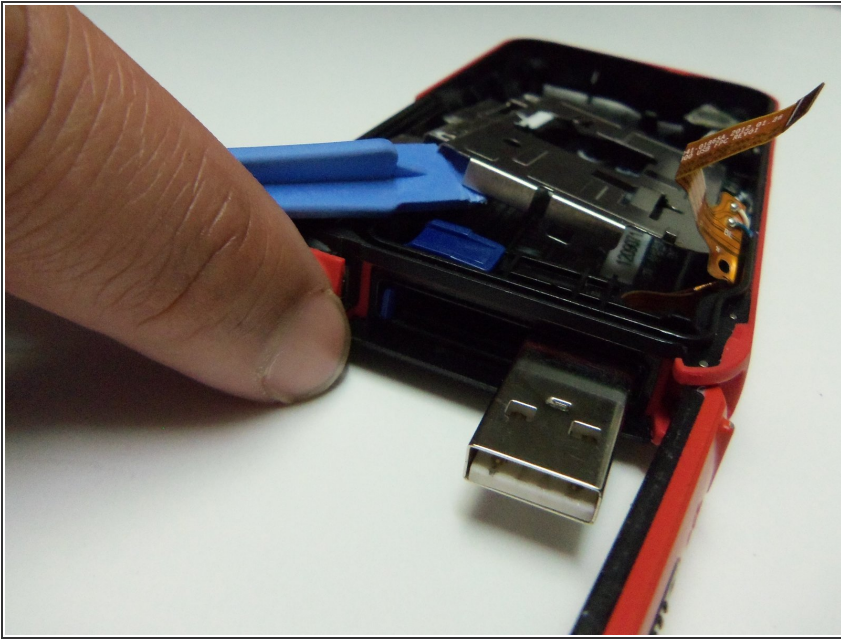
- Pull the wire ribbon out with a pair of tweezers.

Step 6 — Battery screw removal



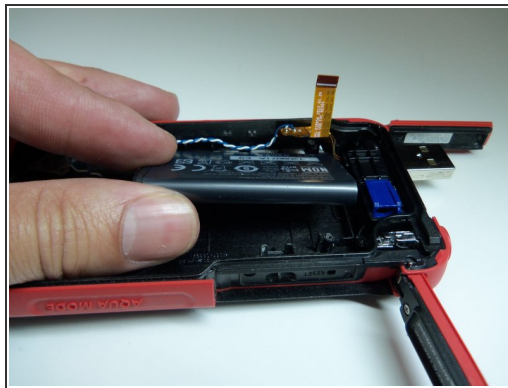
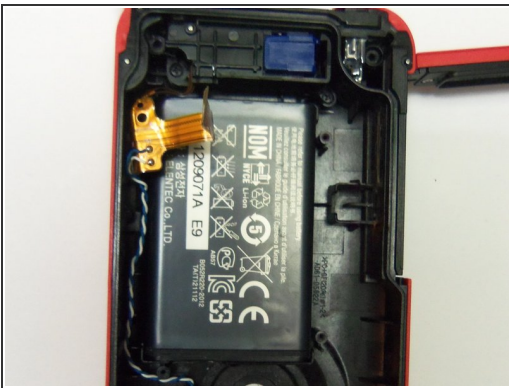
- To remove the battery housing, you must first use a Phillips size 00 to remove the 4 screws.

Step 7 — Battery housing removal



- Use the plastic opening tool to pry the battery housing open.

Step 8 — Remove battery



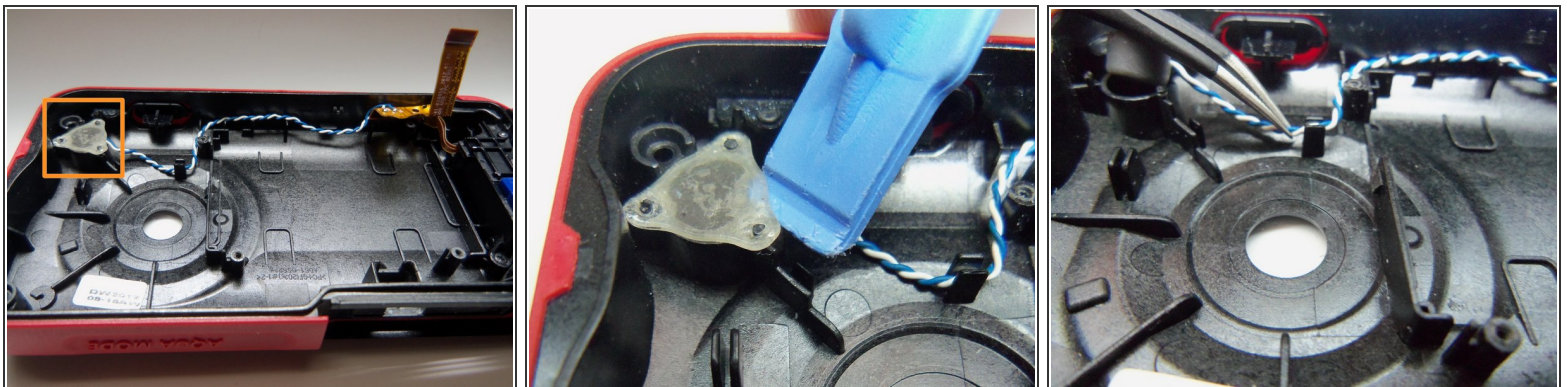
- After removing the battery housing, take the battery out.

Step 9 — Location of USB screws and wire slots.



- Here highlighted are the two Phillips size 00 and the slots where the wire is held.

Step 10 — Remove wire.



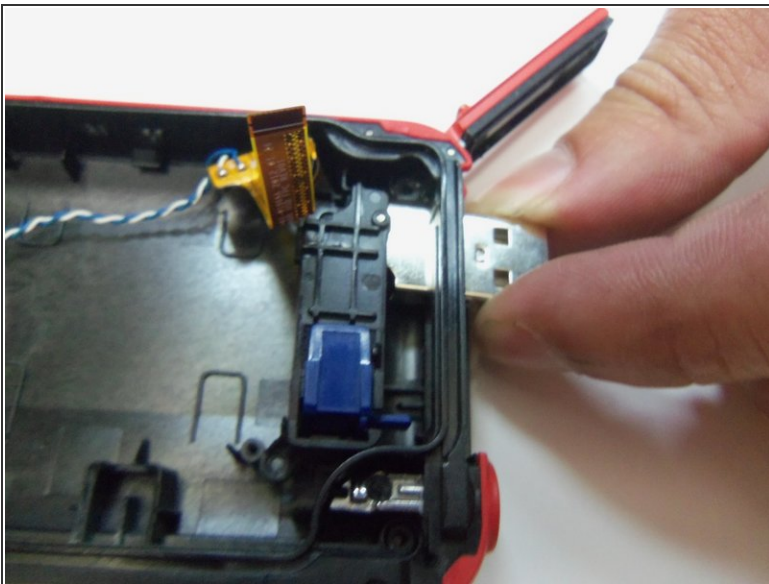
- Use plastic opening tool to pry the plastic cover as shown
- Use tweezers to remove the wire out of slots.

Step 11 — Remove screw



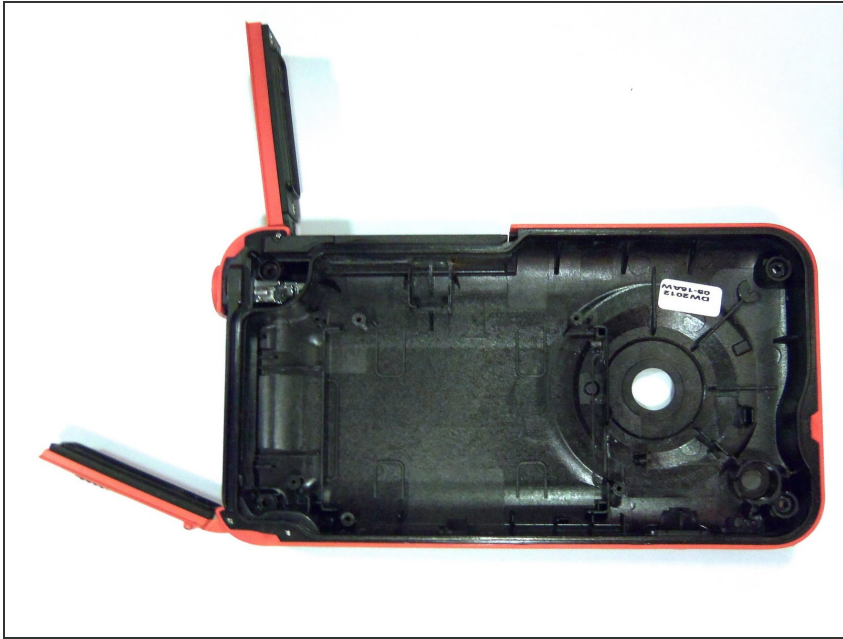
- Remove both Phillips size 00 on USB port.

Step 12 — Removal of USB



- Now push USB port inside the case to remove as shown.

Step 13 — Replace front case



- Removal of the front case completed.

To reassemble your device, follow these instructions in reverse order.